



Y TIR

llais ffermwyr Cymru

the voice of Welsh farming

£2.50



Dewch i nabod un o sêr disgleiriaf ddiweddaraf y cae rygbi

tudalen 6



Farmhouse breakfasts raise amazing amount for charity

pages 12 & 13



“Feeding the nation is what we do, and we do it well”

Young Farmer column - page 20

Preventing Wales’ Corporate Carbon Land Grab: Balancing carbon, trees and rural communities webinar

IN response to reports of land being bought up in Wales for the purpose of tree planting and carbon sequestration, the FUW hosted a well received webinar on January 19 titled ‘Preventing Wales’ Corporate Carbon Land Grab: Balancing carbon, trees and rural communities’.

Chaired by FUW Policy Officer, Teleri Fielden, (pictured right), the webinar gave an insight into the situation in Wales.

As part of Wales’ route to Net Zero, the Welsh Government has set an ambitious target of planting an additional 180,000 hectares (ha) with trees by 2050 and to improve woodland management. This is equivalent to 10% of Welsh farmland.

Mrs Fielden explained that the future value of carbon offsets is also driving afforestation and land purchases. However, the current carbon market is voluntary therefore private companies can purchase carbon credits without having to reduce their emissions in the first instance.

“Some see this as a lucrative future market for landowners. Indeed, if the price of carbon rises to £50 per tonne, payments for carbon sequestration could be worth up to £1.7 billion per year in the UK, but there remain two key issues with the control of this market.

“Firstly, the market isn’t being led or controlled by farmers who currently manage land in Wales, and secondly, the demands on land are increasing - carbon is just one of them,” she told the audience.

Figures obtained by the FUW have shown that 75% of the afforestation applications in Wales for over 50 ha of



planting are from charities and private companies based in England, with a 450% increase in afforestation Environmental Impact Assessment (EIA) applications to Natural Resources Wales (NRW) from 2015 to 2021. Only 20% of applications were from private individuals or businesses based in Wales.

“Naturally, there are concerns about how such changes in land use and ownership will affect Wales’ rural economies, culture, communities and food production,” said Mrs Fielden.

The first speaker, Mike Butterick, 50 Shades of Green campaign spokesperson and New Zealand beef and sheep farmer, focussed on how the New Zealand Emissions Trading Scheme (ETS) introduced a pricing mechanism on carbon credits. This has led to a rapid surge in the purchase of good farmland in New Zealand by carbon investors seeking to sell carbon offsets in the future through forestry creation.

“Within a three week period, 80,000 stock units have been lost in the southern part of the North Island of New Zealand to tree planting, two-thirds of which is owned by foreign companies and will cost the area in the region of \$35 million due to lost productivity,” he said.

Mr Butterick further highlighted that New Zealand has targets to plant 380,000 ha of exotic tree species and 300,000 ha of indigenous species by 2050, but there are currently no restrictions on where they should be planted.

The situation in New Zealand served as a stark reminder to Wales of how quickly unsustainable land use change and ownership can occur. 50 Shades of Green were clear that allowing carbon emitters to use forestry as an excuse to continue emitting shouldn’t be the route to Net Zero.

Jerry Langford from The Woodland Trust explained how two forms of agroforestry could deliver nearly half of the Welsh Government’s 2050 woodland creation target without removing land from farming.

“The farm ‘hedges and edges’ approach has the potential to make up around 22% (40,000 ha) of the 2050 target, with ‘regeneration of upland wood pasture’ making up an additional 22%,” he said.



The situation in New Zealand served as a stark reminder to Wales of how quickly unsustainable land use change and ownership can occur

Continues on page 2

Working to help the livestock farmer

Excellent Retention
Britain's Favourite
Sheep Tag

Breeding Pairs From 83p

EID Slaughter From 64p

NEW Store & Thaw by Pyon
Colostrum can be tested, packaged and frozen. The thawing system defrosts colostrum rapidly and can pasteurise.

POA

Prices correct Feb '22 and exclude VAT and delivery

ASK ABOUT OUR FREE REPLACEMENT TAGS

North Wales Dani 07494 499096 Call 01643 841611
South Wales Catrin 07837 988977 www.shearwell.co.uk

FUW UPDATE

A busy start to the year

by Guto Bebb, FUW Group Managing Director

WITH Christmas and the New Year quickly becoming a distant memory, we have been back at work within FUWIS and the Union in trying circumstances. Whilst the new variant of Covid 19 proved less damaging to health than anticipated we have, in accordance with Government advice, been working from home primarily during January and this has had an impact on our activities.

The farmhouse breakfasts, a staple of our January activity, were severely curtailed again this year. Those that were held received tremendous support but the challenge of such an undertaking during a period of restrictions cannot be underestimated. In my view, we need to look to undertake a series of social events of a similar nature during late spring or early summer because I am acutely aware that our County Staff and members do need to start socialising under the FUW banner once more. We do have plans so let's hope that this virus really is in retreat.

Inflation fears at the start of this year are also a concern and this is reflected in our position as a Union supporting producers of high-quality produce. The attention being paid to increased prices in the shops is quite natural and understandable and as somebody who has done the weekly shop for years (whilst a politician knowing the price of milk, bread or beans was always important) it's difficult not to notice the increases which are fast becoming a weekly occurrence.

However, the media's attention to this issue is missing a key point which is the vast increase in input prices that farmers and food producers are dealing with. Electricity costs, for example, are increasing at speed with little protection for commercial users and such a development has a particular impact upon our dairy sector.

Feed and fuel have also increased dramatically but as customers are squeezed the impact is being felt throughout the food chain with farmers increasingly at the mercy of a food chain attempting to save costs at every level. The easy narrative of beef or lamb increasing in price by 12% or 15% is ignoring the impact of the price changes being felt by producers. This is an issue that we will need to communicate to our political representatives.

Inflation is always a danger to the management of a business and there is nothing that persuades me that this is not the case in 2022.

Finally, I want to use this column to thank Gwen Evans, our Account Executive in the Gwent and Brecon areas for her fantastic service to the Union through her very successful period as a FUWIS Account Executive. Gwen, for personal reasons, has decided to take a well-earned retirement a year or two earlier than I would have preferred and I can tell you that we will miss her. I also know that our customers and members will also be disappointed to hear the news and would join me in wishing her the very best.

I'm pleased to say that Gwen will be helping me and the team to manage the transition of her portfolio to new Account Executives and I am grateful that she has agreed to stay with us an extra month to ensure that this transition is as painless as possible.

The Union and FUWIS will be poorer without her efforts. I know that Gwen will work with us to ensure a smooth transition and I wish to take this opportunity to publicly thank her for being an FUW stalwart in her part of the world for such a long period of time. Diolch yn fawr iawn Gwen.



Continued from page 1

Mr Langford further outlined details of the Woodland Carbon Code, which is the UK's quality assurance standard for generating verified carbon units. However, he added that only new woodland planting can register and qualify for the code.

Andrew Sowerby from Confor brought a commercial forestry perspective to the panel and spoke about the opportunities in this changing marketplace. He emphasised that farmers need to spend time doing calculations, comparisons and critical thinking before planting to ensure they are in the driving seat.

"Rather than planting the 'right tree in the right place for the right reason', we believe that it should be reversed so that the right reasons are the main driver for the farmer or landowner - whether it's for carbon sequestration, timber production, diversified income or simply shelter for livestock," he said.

The webinar can be re-watched on the members section of the website: www.fuw.org.uk/login

Mr Sowerby further clarified that the enhanced Glastir Woodland Creation Scheme Category allows up to 75% non native species, with at least five different types required, due to the risks associated with monocultures.

During the webinar, 52% of participants answered a poll saying that they would be interested in creating woodland in the next five years, but 77% of whom would not consider partnering with an investor to grow trees.

Dr Helaina Black from the Sustainable Soils Alliance, spoke about their work developing a UK farm soil carbon code.

"There are a great deal of variables when it comes to creating a model for the carbon sequestration potential of soil, mainly the soil type, management practices and its current carbon store. Understanding the soils potential and emissions is vital for creating a baseline from which carbon credits can be calculated," she said.

Dr Black also explained how soils can take up to 60 years of targeted management before reaching their carbon storage capacity, meaning contracts are long term commitments, and the UK still needs to establish how private finance will sit alongside public funded schemes in future. However, she concluded by saying that improving soil organic carbon levels in soils is a win-win for soil health, farm productivity, carbon sequestration and biodiversity, offering a 'land sharing' approach to sustainable land use.

Concluding the webinar, FUW President Glyn Roberts said: "I'd like to thank all of the speakers for their invaluable contribution to the webinar and hope that the dialogue will continue to ensure that Wales does not suffer from a carbon land grab. It is evident from this webinar that we need to find a balance in this debate, and look at this situation through the lense of our future farmers and rural communities' needs."

Cysylltwch â ni / Get in touch

Golygydd/Editor: Nia Davies-Jones - ytir@fuw.org.uk

Pennaeth Cyfathrebu/Head of Communications: Anne Dunn - anne.dunn@fuw.org.uk

Pennaeth Marchnata/Head of Marketing: Meryl Roberts - meryl.roberts@fuw.org.uk

Cydllynydd Marchnata/Marketing Coordinator: Angharad Thomas - angharad.thomas@fuw.org.uk

Swyddog Cyfathrebu'r Iaith Gymraeg/Welsh Language Communications Officer: Angharad Evans - angharad.evans@fuw.org.uk

www.fuw.org.uk



“It’s a critical year for the future of farming in Wales”

by Glyn Roberts, FUW President

OVER the coming weeks, months and years the Welsh Agriculture Bill will increasingly dominate our thoughts as an industry, and it is vitally important that we exert influence on the content of the final version as it will dictate how our industry and rural communities look and prosper for the decades to come.

In ten years time, the farmers of Wales won't thank us if we allow legislation to be passed that impedes farming, and we must therefore continue our efforts to make politicians aware of the consequences of the Bill and influence its content.

As matters currently stand there is a real risk the Bill will be more about environmental issues than it will be about producing food.

We all understand the argument that public money should be spent on the public good. But the politicians need to be made aware that it is not as simple as the government offering payments wholly intended to improve the quality of our environment.

Farming is at the core of the rural economy and that cannot be ignored. To do so would see more and more people moving away from the countryside and from farming and the depopulation of rural areas with severe implications for our rural economies, society and culture.

The emphasis on the environment is understandable but short-sighted. There also needs to be an understanding of the needs of agriculture and the rural economy - and the importance of food production and security.

There's no point having a sustainable and diverse environment that is unable to sustain the people who live there while feeding the most densely populated major country in the northern hemisphere.

On a separate point, the news that Asda has reneged on its pledge to source 100% fresh British beef is a



disappointment. That it has done so just two months after making the pledge and the ensuing good publicity it received is a shock for some, but shows how fickle such major companies can be and how rapidly their procurement policies can change based on market conditions.

Which brings me to some of the trade deals that the Westminster Government is making with other countries. We all understand the importance of international trade, but every trade agreement is a two-way-street and all too often these deals will lead to a massive increase in the volumes of agricultural products that can be imported, harming our industry and undermining our standards.

I read a 19kg carcass weight lamb, born in New Zealand in September was worth £89 to the farmer

(depending on the exchange rate, obviously). We'd expect £116 for a similar sized lamb; nearly 30% more.

We are all happy, I'm sure, that prices in the marts across Wales have remained as buoyant as they have. Hallelujah!

But it's not all good news. This has got to be balanced against the stratospheric rises in the price of fertiliser, animal feed and the forthcoming hike in energy prices. And all the while the UK Government is undercutting our trade in a way which their own impact assessments show will reduce UK food production and reduce our farmgate prices.

If such trade deals cannot be stopped or adjusted to include greater protection for our own produce, the reliance on the safety net provided by direct support - which provides around 80% of Welsh farm incomes - will increase.

But with English farm support already cut by 10% in 2021 and due to be phased out over the next six years, and environmental objectives seemingly taking priority over the financial wellbeing of family farms, there continues to be significant pressure for Wales to follow England's lead.

Which of course, brings us back to the contents of the summer's Agriculture Bill. Thankfully the Welsh Government appears, at least superficially, to have become increasingly aware of the dangers of blindly following England's destructive policies, but we need to ensure that this remains at the forefront of their minds - and those of all Senedd Members. Be under no illusions, it's a critical year for the future of farming in Wales.

Mae'r golofn yma yn Gymraeg ar wefan UAC - Newyddion - Newyddion Y Tir: "Mae'n flwyddyn dyngedfennol i ddyfodol ffermio yng Nghymru."

ASDA slammed for withdrawing 100% support for British Beef

THE FUW has written to ASDA regarding the supermarket's decision to step away from its pledge to source 100% fresh British beef just weeks after implementing the pledge.

The letter comes after farmers from across Wales contacted the Union to express their anger and disappointment.

The FUW has met with representatives from ASDA on a number of occasions throughout the pandemic to discuss the importance of supporting Welsh and UK producers at a time when global food supply chains were most volatile.

Therefore, the commitment to source 100% British dairy, potatoes and fresh beef following the sale of a majority stake of the retailer had been welcomed.

In a letter to ASDA, FUW President Glyn Roberts said: "Nevertheless, the recent decision to withdraw the pledge to source 100% fresh British beef after only two months of doing so has come as a shock for FUW members, particularly given the fact that other major retailers have committed to maintain such promises despite current market conditions."

While the UK red meat sector has experienced buoyant prices over the past twelve months, Mr Roberts wrote, this must be considered in the context of cuts having already been made to farm support payments in England, increased input costs, supply chain issues which ASDA will also have experienced and uncertainties surrounding further red tape, future agricultural support and the impact of trade deals.

"For example, during the week ending January 1 2022 the GB deadweight price for all cattle was on average 10% higher year on year whilst GB fertiliser prices in November 2021 were on average 153% higher than 2020 levels.

"In light of the great deal of uncertainty and volatility facing the UK agricultural industry, the FUW would urge ASDA to reconsider its commitment to sourcing 100% fresh British beef in order to provide certainty to UK producers that they won't simply be replaced in future," wrote the Union President.



“The recent decision to withdraw the pledge to source 100% fresh British beef after only two months of doing so has come as a shock for FUW members, particularly given the fact that other major retailers have committed to maintain such promises despite current market conditions.”

Shepherdess[®] lamb milk

Inspired by nature, backed by science

Formulated to meet the needs of today's lambs

Sustainably
sourced
ingredients

Advanced
gut health
package

NuStart

Easy mix

*** GUARANTEE ***

To find your nearest stockist call **01845 578125**
or visit www.provimi.eu/uk-shepherdess

Shepherdess[®] is a trademark of R&S Harding Ltd. @CargillAnimalUK

Venison, lamb and trade deals top of the agenda during Brecon farm visit

TRADE deals, the US market for lamb and sustainable food production were top of the agenda when FUW officials met with Parliamentary Under-Secretary (Wales Office) and Monmouthshire MP David TC Davies and Wales Office representative in the House of Lords, Baroness Bloomfield.

Opening the gates to her farm was FUW member and former Brecon and Radnor County FUW Chair Kath Shaw, who runs a 75 acres deer farm at Blaenhow Farm, near Builth Wells.

Speaking about the benefits of venison as part of the diet, Kath explained: "Venison is slowly gaining popularity as more people become aware of its health benefits such as it being low in fat and high in iron and protein. The food we grow here is produced sustainably and we work with nature in many ways.

"We are lucky enough to still have a small abattoir nearby, meaning the food miles associated with our venison are minimised, but many other Welsh farmers are not as lucky - the UK has lost around 90% of its abattoirs in my lifetime, and there are predictions more than half of what we have left will close in the next five years if something is not done."

Ms Shaw said the larger abattoirs did not provide the kind of services needed by producers such as her, and that more abattoir closures would further reduce the opportunities for farms to diversify, provide local food and supply niche markets.

"UK Governments need to work together on overhauling the regulations that have made life so difficult for these premises, and providing support rather than obstacles and more red tape - before it's too late," she said.

FUW President Glyn Roberts, who also attended the visit, spoke about the opportunities in the US market for Welsh and UK lamb after the lifting of the small ruminant rule on January 3.

"The US market definitely presents opportunities for some which are very welcome, and there was agreement that we all need to work together to open the necessary doors

"We are lucky enough to still have a small abattoir nearby, meaning the food miles associated with our venison are minimised, but many other Welsh farmers are not as lucky."



From left, Kath and her mother Fran Shaw; Wales Office representative in the House of Lords, Baroness Bloomfield; Parliamentary Under-Secretary (Wales Office) and Monmouthshire MP David TC Davies and FUW President Glyn Roberts.

and overcome obstacles to make the best of those - without losing focus on the vast and important market for lamb that exists on our doorstep in mainland Europe," he said.

Mr Roberts also took the opportunity to highlight concerns regarding the impact of the recently signed UK-Australia Free Trade Agreement (FTA).

"Whatever red meat market you're operating in, be it venison, lamb or beef, the deal with Australia is likely to have a negative impact as red meat markets are depressed by increased Australian imports under certain trading conditions.

"The UK Government's own assessment admits that it is our beef and lamb producers who will suffer most as a result of the deal," he said.

Mr Roberts told the Wales Office representatives that it was extremely frustrating that UK Governments were implementing or considering introducing additional unnecessary rules and restrictions for UK farmers while the UK Government had simultaneously negotiated and accepted a deal allowing the import of

more and more Australian food produced to far lower standards than those already required of farmers in the UK.

Official UK Government figures estimate the UK-Australia deal will increase the size of UK's economy by only 0.08% (eight ten-thousandths) in the long run and increase average wages by just 60p per week based on 2019 figures - but will result in a fall of a quarter of a billion pounds in the GVA of the UK's agri-food sectors '...driven by increased import competition in the beef and sheepmeat sub-sectors.'

"Such concerns are exacerbated by the fact that similar trade deals are being negotiated or finalised with other major agricultural producing nations such as New Zealand.

"Potential adverse impacts on natural resources have also been acknowledged by the UK Government's impact assessment at a time of grave concerns regarding our environment and climate," said Mr Roberts, who is urging MPs to oppose the deal.

However, he said that whatever concerns and differences exist, the FUW remains committed to working with the Wales Office and others in order to protect Wales' family farms and rural communities and maximise opportunities.

Speaking after the visit, FUW Brecon and Radnor County Chairman Dwyllan Davies, who also attended the farm visit, said: "It was a great pleasure to welcome Mr Davies and Baroness Bloomfield to the heart of rural Wales to discuss how we can do this, and I am extremely grateful to the Shaw family for having given us an insight into a very different side of Welsh agriculture."

Political Matters

by Libby Davies, FUW Senedd and Parliamentary Affairs Officer

IN the last edition of *Y Tir*, I outlined the policy objectives of the Welsh Government - Plaid Cymru Cooperation Agreement. Since then, Plaid Cymru leader Adam Price has announced his reshuffle and the 'Designated Members' who will join him in negotiations with Welsh Government Ministers. Notably, we've seen the appointment of Cefin Cambell, former Plaid Cymru Spokesperson for Rural Affairs, announced as the second Designated Member. Subsequently, Dwyfor Meirionnydd MS Mabon ap Gwynfor has taken on the role of Party Spokesperson for Agriculture and Rural Affairs. The FUW has built strong working relationships with Mr Campbell and Mr ap Gwynfor and I hope to work productively with them both in the near future.

Also of interest to FUW members may be that, Heledd Fychan MS will take on Welsh Language and Culture under her new remit, and Delyth Jewell MS and Peredur Owen Griffiths MS, who we have also positively engaged with over recent months, will continue their roles as Party Spokesperson for Climate Change, and Communities, respectively.

When meeting with MPs, the UK-Australia Free Trade Agreement remains high on the agenda. We maintain that Australia's lower standards and production costs, in conjunction with an increase and ultimate abandonment of agricultural import quotas will significantly undermine UK standards and Welsh farmgate prices - concerns which are only heightened by other trade negotiations, including with New Zealand. We are also engaging in conversations regarding the USA lifting the ban on British lamb and the new market that this opens for our members and PGI Welsh lamb producers.

I recently attended a very constructive farm visit with Wales Office Minister David TC Davies and Wales Office House of Lords spokesman Baroness Bloomfield at Blaenhow deer farm in Brecon and Radnor, where we received a fantastic welcome from the Shaw family and discussed these matters.

In Westminster, we have also seen further information about the Environmental Land Management scheme (ELM) in England, which we now know will include three schemes; the Local Nature Recovery scheme, the Landscape recovery scheme and the Sustainable Farming Incentive, based on the principle of 'public money for public goods'. In the wake of this, we continue to engage with Members of the Senedd on the Agriculture (Wales) Bill and the proposed Sustainable Farming Scheme to ensure the voices of agriculture are heard by the policy makers designing the schemes in Wales.

Also over the last month, I have attended the Glamorgan Farmhouse Breakfast, kindly hosted at Rosedew Farm, which provided a great opportunity to speak with members, elected representatives and stakeholders. Following which, I hope to build our relationships and engage with local authorities much more closely.

I also joined a Q&A session with Brecon and Radnor Conservative MS James Evans, as part of the county's Farmhouse Breakfast event where we discussed carbon trading and future funding with FUW members and representatives. Coming up I will be attending a farm visit with Cardiff Central Labour MS Jenny Rathbone in Glamorgan, which I am very much looking forward to in order to raise concerns on behalf of FUW members.



Magnesium pre-calving underpins milk fever prevention at Welsh dairy farm

USING multiple milk fever prevention strategies is paying dividends at a Carmarthenshire dairy farm. FUW member Iwan Francis, (*pictured right*), who produces milk on a split block calving system at Nantglas, Talog, had experienced high levels of milk fever in his herd around calving.

Through his project work as a Farming Connect demonstration farmer, he introduced a series of measures for magnesium supplementation pre-calving, as advised by vet Kate Burnby.

Forages with low potassium, produced later in the season and on ground with lower fertiliser inputs, were produced as feed for dry cows. Ms Burnby, a vet specialising in cow fertility, told farmers attending a recent Farming Connect open day at Nantglas that ideally this forage should come from more mature leys and grasses.

Mr Francis adds a measured amount of magnesium chloride to the drinking water of his dry cows daily. To overcome the issue of autumn-calving cows drinking less water at grass, he now only calves the heifers and second calvers at pasture. He houses the rest of the herd for two weeks before calving, and feeds them silage.

As this feed is drier than grass, it encourages the cows to drink more of the magnesium-treated water. Cows considered to be 'high-risk' are also given magnesium boluses a couple of weeks before calving.

The 'belt and braces' approach to preventing milk fever has been successful, with very few cases, said Mr Francis. This year, only five cows required calcium treatment after calving, compared to 14 the previous year, and all recovered very quickly with treatment - there were no 'downer' cows or losses.

Low levels of magnesium had also been identified as the antagonist in a recurring problem with pica - a condition that had been causing Mr Francis' cattle to eat large quantities of soil, stones and other objects in the spring and early summer. To better understand the issue, the available nutrients and minerals in the diet were analysed.

Pica is often assumed to be linked to a phosphorous deficiency, but the monitoring at Nantglas had also identified magnesium as the antagonist. In the fresh grass samples analysed, magnesium levels were very low, and there were also low levels of copper, zinc, selenium and cobalt.

Grassland and soil consultant Nigel Howells, who has been advising on this project, said this situation corresponded with the mineral grass analysis on other farms he had worked with, where problems with pica had also been experienced.

Soil magnesium and phosphorous levels at Nantglas in the samples analysed were at



index 2; for the soil to be at its most productive, the level should ideally be 3, said Mr Howells.

The soil was also found to have a high residual level of sulphur. Mr Howells advised farmers to consider the type of fertiliser they apply, since some contain sulphur.

The calcium-to-magnesium balance in the soil at Nantglas was also investigated, and showed a balance of 15:1, compared to the ideal of 7:1.

Farmers were advised to discuss both macro and trace element supplementation with their farm vet. This should provide a route to balancing out deficiencies until the correct balance can be achieved in grass.

This project has received funding through the Welsh Government Rural Communities - Rural Development Programme 2014-2020, which is funded by the European Agricultural Fund for Rural Development and the Welsh Government.

Ffurflen Cais Sengl Single Application Form -

Rydym yma i helpu
We're here to help



Gadewch i ni ysgwyddo'r baich
o lenwi'r ffurflen - ffoniwch eich swyddfa
sirol i drefnu apwyntiad

Ynys Môn/Anglesey:	01248 750250
Brycheiniog a Maesyfed/ Brecon and Radnorshire:	01982 554030
Caernarfon:	01286 672541
Caerfyrddin/Carmarthenshire:	01267 237974
Ceredigion:	01570 424515
Dinbych a Fflint/Denbigh and Flint:	01824 707198
Morgannwg/Glamorgan:	01446 774838
Gwent:	01873 853280
Meirionnydd/Merioneth:	01341 422298
Sir Drefaldwyn/Montgomeryshire:	01686 626889
Sir Benfro/Pembrokeshire:	01437 762913

Let us take the stress of form filling
away - call your local county office to
book your appointment

Free Sales Service for FUW Members

If you have anything to sell - big or small - fill in the coupon and for a FREE ADVERTISEMENT send it to:

Y Tir, Plas Gogerddan, Aberystwyth, SY23 3BT or email it to: ytir@fuw.org.uk

Entries must be confined to 25 words and be received by: February 21 2022

FOR SALE	WANTED	LIVESTOCK FOR SALE
HOLIDAYS	FARMS FOR SALE	MISCELLANEOUS

Name

Address

Telephone number

PLEASE NOTE: FREE ADVERTISEMENTS ARE FOR FUW MEMBERS ONLY AND NOT FOR COMMERCIAL TRADERS

Membership number:

FOR SALE

CWN DEFAID CYMREIG; Welsh sheepdog pups, from working parents. Tel: 07929 877248.

KUHN TEDDER 5001 5 METRE; as new, done 20-25 acres per year. Tel: 07980 876940, Caersws, Powys.

HISPEC 2000 GALLON TANKER; on new tyres, Ford 3000 tractor, Ferguson T20 petrol TVO, Marshall rotary spreader, PTO small bale straw chopper, yard scraper. Tel: 01348 881212 / 07779 921934.

FODDER BEET; cleaned. Delivered all areas. Tel: 07802 680687 / 01691 777785.

WANTED

JOTUL 600 CAST IRON WOOD STOVE; for sauna. Tel: 01874 711246, Powys.

MISCELLANEOUS

GWASANAETH SGANIO DEFAID; sheep scanning service. Cysylltwch/contact Rhys Jones, Canolbarth Cymru/Mid Wales. Ffôn/Tel: 07753 684260 (all areas considered).



ADVERTISE WITH US!

YTir-adverts@blueprintmedia.org.uk
Mobile 07790 387690 | Office 01743 231135

CORNEL CLECS

Y byd amaeth yn sicrhau prop rhyngwladol proffesiynol arall

gan Angharad Evans, Swyddog Cyfathrebu'r Iaith Gymraeg

MAE wastad yn bleser cael ymfalchïo yn llwyddiannau ein pobl ifanc, ac mae gan *Cornel Clecs* stori arbennig iawn ar eich cyfer mis yma, un sydd hefyd a chysylltiad arbennig iawn gyda UAC, mi esboniai mwy i chi am hyn yn y man.

Dewch i ni ddod i nabod un o sêr disgleiriaf ddiweddaraf y cae rygbi. Ond nid y cae rygbi yn unig sy'n mynd a bryd merch o fferm fynyddig yn Eryri, ac mae'r hanes yn cychwyn ar fuarth y fferm.

Ar ôl profi llwyddiant rhyngwladol mewn treialon cŵn defaid, mae Gwenllian Pys ymhlith y merched cyntaf i gael eu dewis i chwarae rygbi'n broffesiynol llawn-amser dros Gymru.

Mae Gwenllian yn un o 12 sydd wedi derbyn cytundeb llawn amser gan Undeb Rygbi Cymru yn ddiweddar. Mae'n gryn newid byd i'r ferch o Padog ger Ysbyty Ifan ym mhen uchaf Dyffryn Conwy sydd bellach wedi symud i Gaerdydd er mwyn gallu hyfforddi'n ddyddiol gyda charfan Cymru.

Yn un o ddeg o blant cafodd Gwenllian ei magu ar fferm Tŷ Mawr Eidda, mae rygbi yn y gwaed ac mae pob un o'i phump o frodyr a'i phedair chwaer wedi chwarae i Glwb Rygbi Nant Conwy, neu'n dal i wneud hynny. Mae dwy o'i chwiorydd sef Elin a Non wedi chwarae i dîm 'Gogledd Cymru' ac Alaw, Ifan, Maredudd a Rhodri wedi chwarae i 'Eryri'. Maent yn dilyn ôl troed eu tad Eryl, sy'n un o sylfaenwyr a chyn capten Clwb Rygbi Nant Conwy.

"Mae 'Nant Conwy' yn llawer mwy na chlwb rygbi," meddai Eryl. "Mae'n glwb cymdeithasol pwysig, gyda'r Gymraeg yn gyfrwng naturiol i weithgareddau a hyfforddiant ac yn fodd i ieuencid yr ardal gael bywyd cymdeithasol hollol naturiol drwy gyfrwng y Gymraeg. Mae canran uchel iawn - oddeutu 80% o'r aelodau yn dod o gefndir amaeth ac mae'n gyfrwng pwysig i'r wlad a'r dref ddod at ei gilydd.

"Yn ôl pob sôn roedd yr heddlu lleol yn falch iawn o weld y clwb yn datblygu - gan fod llawer llai o helyntion yn Llanrwst ar benwythnosau oherwydd y berthynas oedd yn datblygu rhwng hogiau'r wlad a hogiau'r dre!"

Mae'n credu bod llwyddiant ei ferch yn glod i'r addysg a gafodd yn ysgol gynradd Ysbyty Ifan ac Ysgol Dyffryn Conwy.

"Ysgol fach yn y wlad yw Ysgol Ysbyty Ifan ac er bod gwybodusion o'r byd addysg yn honni bod ysgolion bach yn llyffethair i ddatblygiadau a chyfluoedd ym myd chwaraeon, ymddengys bod amheuaeth ynglŷn â chymhellion y rhai sydd yn coleddu'r farn hon," meddai. Ychwanegodd mai un arall o'r ysgol i gael cap i Gymru yw Dyddgu Hywel, perthynas i Gwenllian, sydd bellach yn sylwebydd rygbi, ar ôl ennill sawl cap i Gymru fel cefnwraig gadarn yn y ddegawd ddiwethaf.

Roedd Gwenllian yn 16 oed pan ddechreuodd chwarae i Nant Conwy, er hyn roedd hi wedi bod yn chwarae yn yr ysgol gynradd a hefo'i brodyr a'i chwiorydd a'i thad



ar y fferm ers yn ieuanc iawn. Cafodd wahoddiad i chwarae i'r Scarlets dan 18 ac yna i'r tîm hŷn. Roedd hi wedi cael ei hystyried fel capten ond roedd amheuaeth a fyddai'n gallu cyfathrebu'n ddigon da yn y Saesneg i allu ysgogi'r garfan.

Caernarfon oedd y clwb lleol i ferched dros 18 ac wrth chwarae yn erbyn Abertawe dewiswyd hi fel 'chwaraewr y gem'. Cafodd alwad ffôn ar y ffordd adref ar y bws gan

Rowland Phillips, hyfforddwr Cymru ar y pryd, yn rhoi gwahoddiad i ymarfer gyda Chymru. Mae ganddi 16 cap i Gymru erbyn hyn ac mae'r gweddill yn hanes.

Er yr holl llwyddiant ar y cae rygbi, mae Gwenllian yn dal wrth ei bodd yn helpu ar y fferm ac wedi cwblhau cwrs cneifio gyda'r 'Bwrdd Marchnata Gwlân' a chyrtsiau busnes fferm gyda chwmni 'Simply the Best', drwy gynllun hyfforddiant Cyswilt Ffermio. Un o'i phrif ddiddordebau ar y fferm yw dysgu a thrin cŵn defaid, ac yn y gorffennol mae hi wedi cynrychioli Cymru yn y Treialon Cŵn Defaid Rhyngwladol ac ar y rhaglen deledu 'One Man and His Dog'.

Mae cyfoeth a pharhad y bywyd gwledig Cymraeg yn holl bwysig i deulu Tŷ Mawr Eidda.

"Mae bywyd cefn gwlad a chefnidir amaethyddol wedi cyfrannu'n fawr tuag at ddatblygiad Gwenllian," meddai Eryl.

"Ac ysgolion bach y wlad hefyd - ble mae plant yn cael magu personoliaeth a chyfle i ddatblygu er mwyn sicrhau dinasyddion ymroddedig i'r dyfodol.

"Mae parhad y diwydiant amaeth yn hanfodol bwysig i ddyfodol cymdeithasau a gweithgareddau yng nghefn gwlad ac mae cyfleoedd gwych yn gallu deillio o fod yn rhan o gymdeithas fyrlymus fel hon."

Er bod bywyd yn brysyr iawn i Gwenllian, rydym yn ddiolchgar iddi am gael sgwrs gyflym gyda ni, dywedodd: "Mae'n anrhydedd ac yn fraint cael fy newis yn un o'r chwaraewyr merched cyntaf i gael cynnig cytundeb llawn amser gydag Undeb Rygbi Cymru ac mae'n dangos bod gwaith caled a dyfalbarhad yn talu ar ei ganfed.

"Pan gesi alwad ffôn gan yr hyfforddwr Ioan Cunningham yn cynnig cytundeb llawn amser i mi, allan ar y fferm oeddwn i gyda'r cŵn. Pan gynigiodd Ioan y cytundeb i mi doeddwn i ddim yn coelio'r peth a dwi dal i binchio fy hun hyd heddiw. Ar ôl darhod y galwad, esi yn rhy i'r tŷ i ddweud wrth fy nhad. Mae'n rhywbeth mae'r tîm mwyod wedi bod yn disgwyl am ers blynnyddoedd ac rydym yn gobeithio am dorffeydd yn dod i'n gwyllo yn ystod y chwe gwlad."

Felly, beth meddai chi yw'r cysylltiad arbennig rhwng Gwenllian a UAC? Mae'n nith i'n llywydd Glyn Roberts, ac mae'n siŵr y bydd Glyn a phob un ohonom yn ymfalchïo yng nghamp Gwenllian ar y cae rygbi. Pob llwyddiant i ti Gwenllian.

This article is in English on the FUW website - News - Y Tir News: "Agriculture secures another professional international prop."

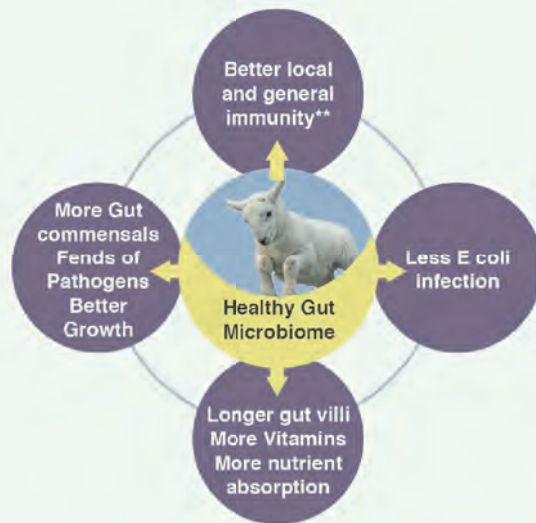
Provita Lamb Response: A Natural Alternative to Help Prevent Watery Mouth

Lamb mortality and neonatal deaths remain very high in the global sheep industry and keeping newborn lambs alive is no easy task.

To date, the use of oral Spectam® Scour Halt has been the primary method of treatment & prevention. However, it has now been delisted on account of international policy on antibiotic resistance, therefore alternative methods of control must be adopted. Prevention of watery mouth is much more effective than cure, and this preventative approach must be based on the principle of rapidly boosting the lamb's immune system at birth.

Provita's Lamb Response can not only help effectively replace spectinomycin and aid in the prevention of watery mouth, but it has the added of helping to produce heavier lambs at weaning. Lamb Response contains a combination of 4 highly effective and unique ingredients, not present in other commercial products, which directly combat E. coli.

1. Contains beneficial bacteria which naturally diminishes E. coli bacteria, enhances immunity, and 'seals' the newborn gut. Lamb Response contains a potent strain of live organisms, which is one of the primary active ingredients of the first, EU licensed Probiotic's (Provita Protect POM-VPS) which is clinically proven to prevent scour and has antibacterial activity against E. coli. This ultra-fast replicating beneficial bacteria will seed the gut expanding the young lamb's gut microbiome, which is the basis of the overall



Benefits of a healthy gut microbiome in young lambs

immunity. In addition, tight junctions in the gut will be sealed, crowding out and neutralising E. coli pathogens preventing their establishment within the lamb.

2. Contains egg powder which provide high concentrations of unique IgY proteins which are more potent against E. coli than usual colostrum antibodies. These IgY antibodies have a higher binding affinity for E. coli antigens than do conventional colostrum antibodies. Thus, the combination of beneficial bacteria plus IGY proteins provides a powerful immediate protection against E. coli, which has been established in scientific literature.

3. Contains high levels of vitamins necessary for the young animal's metabolism and supplies especially vitamin E, which stimulates the lymphocytes in the underdeveloped immune system, thus adding a further layer of protection.

4. Supplies high energy to stimulate appetite, help prevent hypothermia (a very common fatality factor in young lambs) and to stimulate blood flow through vital organs

Beneficial bacteria in lambs have been proven to:

- (1) Augment immune function and increase antibody levels.
- (2) Reduce E. coli diarrhoea by 50%
- (3) Improvement in weight gain and general health

Written by Dr Tom Barragry PhD, MSc, MVB, MRCVS.
 Vet Advisor to Provita Animal Health.

James Warwick, a UK sheep farmer provided a recent testimonial to the effectiveness of Lamb Response in addressing his issues with watery mouth:

"Just wanted to say how awesome the Lamb Response is! We had trouble with watery mouth this lambing and was recommended this by our vet and since we've been using it, we haven't lost lamb to watery mouth! A fantastic product!"

Lamb Colostrum

Provita Lamb Colostrum substitutes or supplements maternal colostrum providing high levels of natural colostrum, energy, egg powder and beneficial bacteria.

Lamb Jump Start

Jump Start has very high levels of energy, egg powder, minerals and vitamins. Use for weak and multiple lambs and to counteract common newborn deficiencies.

Lamb Response

Lamb Response provides beneficial bacteria, egg powder and vitamins. Use on all lambs to help prevent upsets, and to improve gut condition and digestion.

We know lamb survival is critical, so act now with Provita's complete range of products to boost lamb health, thrift and performance.

FREEPHONE

☎ 0800 328 4982

✉ info@provita.co.uk

📍 www.provita.co.uk



Provita
 Animal Health Naturally

**Please note: the bodywarmer requires 3 vouchers

New look team at the Dolgellau office

Hazel Eldridge,
Administration Manager



Hazel has been with the FUW since December 2016, starting as an Account Handler in the Dolgellau office, a role she performed until early 2021 when she was promoted to Regional Lead Account Handler responsible for the Ruthin, Llanrwst and Newtown offices.

At the end of 2021 a vacancy arose for the position of Administration Manager for FUWIS and Hazel was successful in her application and took up her new role in January 2022, which led to appointing new Account Handlers for the Dolgellau Office.

Linda Evans,
Account Handler



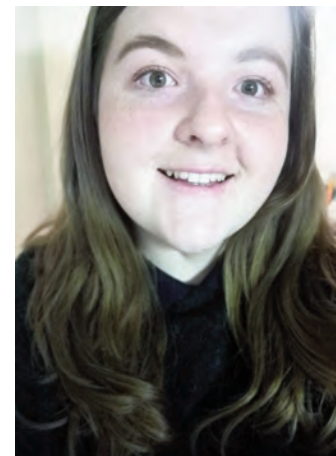
Linda was born in Aberystwyth and attended Ysgol Gyfun Penweddig.

Having worked for Ceredigion County Council for many years Linda moved to live in Rushden, Northamptonshire for 18 years where she worked as a Credit Controller for a multi-national tyre company.

She has now returned to live in Borth, Ceredigion and started her role as Account Handler in November 2021.

Linda has a daughter Tara and grandson Stuart.

Emily Jones,
Account Handler



Emily Jones is from Garnwen, Penuwch, near Tregaron, and started her role as Account Handler in December 2021.

She keeps a Pedigree Herd of Beef Shorthorn Cattle and 2 Pedigree Flocks of North Country Cheviots, the Hill types and the Park types.

Emily is very interested in the health and wellbeing of her animals, she has joined the SURC and now has a High Health Status with the Cattle, and she has joined the Hill Ram Scheme and is recording her Cheviots with HCC and Signet.

Emily has been farming all her life with her Mother and Father, and has gained all her knowledge about the farm from her parents.

Emily also Volunteers for the DPJ foundation as the charity is very close to her heart.

**Byw'n lleol
Gweithio'n lleol
Yswirio'n lleol**

Ffoniwch ni ar

0344 800 3110

am ddyfynbris wedi ei deilwra
i'ch anghenion chi

**Live locally
Work locally
Insure locally**

Call us on

0344 800 3110

for a quote that is tailored
to your needs



Gwasanaethau Yswiriant FUW yw arddull masnachu FUW Insurance Services Limited sydd wedi'u hawdurdodi a'u rheoleiddio gan y Financial Conduct Authority. Rhif cofrestru 615251. Swyddfa Gofrestredig: Llys Amaeth, Plas Gogerddan, ABERYSTWYTH, SY23 3BT. Wedi'i gofrestru yn Lloegr a Chymru o dan rif 07981993

FUW Insurance Services is a trading style of FUW Insurance Services Limited who are authorised and regulated by the Financial Conduct Authority. Registration number 615251. Registered Office: Llys Amaeth, Plas Gogerddan, ABERYSTWYTH, SY23 3BT. Registered in England & Wales number 07981993



Office telephone numbers

Llangefni	01248 750462
Builth Wells	01982 553406
Caernarfon	01286 675136
Lampeter	01570 422556
Carmarthen	01267 222570
Ruthin	01824 702912
Cowbridge	01446 773108
Abergavenny	01873 859833
Llanrwst	01492 642683
Dolgellau	01341 421290
Newtown	01686 623093
Haverfordwest	01437 783969

Maintenance of direct support ceiling welcomed



THE FUW has welcomed the Welsh Government's announcement that the 2022 direct payment budget will be maintained at 2020 and 2021 levels.

Minister for Rural Affairs and North Wales, and Trefnydd Lesley Griffiths announced on December 23 2021 that a total direct payment ceiling of £238 million would be provided in 2022, matching the budgets in 2020 and 2021.

FUW President Glyn Roberts welcomed the announcement, stating: "The minister's decision recognises the importance of the direct support budget not only to the 16,000 or so farm businesses that rely on it, but

also the many more tens of thousands of businesses that benefit from these payments."

Mr Roberts said that hundreds of thousands of Welsh people employed directly and indirectly in the agricultural and food supply chains would benefit from the funding.

"We therefore very much welcome the fact that the minister has recognised the concerns we have raised in terms of the importance of this funding not only for farming families but for Wales' wider communities."

Mr Roberts added that he shared the Welsh Government's frustration and anger that the UK Government's promise to replace EU funding in full had been broken.

"Welsh farmers have already lost £137 million as a result of the autumn 2020 spending review, and in November 2021 it was announced that the budget for agriculture would be cut by a further £106 million compared with what was promised.

"Farming budgets in the EU are not facing such cuts, yet we were promised that no cuts would result from Brexit. So we share the Welsh Government's frustrations and concerns - particularly in light of the rising barriers for our food exports to the EU and the threat posed by our competitors, whether in the EU or through new trade deals," he added.

Make estate planning your top priority

After a tumultuous 2021, the start of a new year brings hope of a fresh start and better times in 2022. Looking to the future has never been more important, and the new year is the perfect time to consider your future and the future of your loved ones. Katie Kenealy, an Affiliate of the Society for Trust and Estates Practitioners at RDP Law, explains why estate planning should be a top priority this year.



THE Covid pandemic has highlighted, for many, the importance of taking control of your affairs and planning for your future.

The prospect of making a Will is not something relished by most people and is often an area that people are reluctant to talk about. However, continually putting off this vital task can be a costly and sometimes stressful oversight.

It is a common misconception that the entirety of your estate will pass by default to the most obvious beneficiaries in your life (be it a spouse or children), but that is not always the case. The rules surrounding intestate estates (i.e. where a person has died without leaving a valid Will in place) are complex and family members are often overwhelmed by the challenges of administering an intestate estate following the loss of a loved one.

Making a Will ensures that your wishes are met and that your estate passes to those who you wish to benefit.

It is particularly important to give thought to your Will planning when extended families and second marriages are relevant. Without a correctly drafted Will in place, children of the family from the first marriage could find themselves completely disinherited in favour of the spouse and children from a second marriage.

Seeking advice from a specialist can safeguard against such an eventuality and provide you, and your family, with peace of mind.

Even those who already have a Will in place should regularly update their Wills to ensure that they still meet your requirements.

Reviewing your Will at regular intervals will ensure that any changes in tax legislation and care home funding provisions, both of which are fluid in nature, are taken into account.

Appropriate Will planning and the implementation of trust arrangements can help reduce the burden of Inheritance Tax significantly.

Another important issue to consider when planning for your future is what will happen to you in the event that you lose the capacity to manage your own affairs. Making a Lasting Powers of Attorney provides you with the freedom and reassurance of knowing who will make decisions for you in the event that you are unable to do so yourself.

For more information regarding estate planning, or to make an appointment to discuss your requirements, please contact Katie Kenealy on 01633 413500 or by email individuals@rdplaw.co.uk

"Rising energy prices are not sustainable"



THE FUW Milk and Dairy produce Committee has warned that rising energy prices are not sustainable for the sector.

The warning comes after reports from dairy farmers of energy costs rising by up to £1,000 a month, with costs expected to increase further.

Responding to the crisis, FUW Milk and Dairy Produce Committee Chairman Dai Davies, (pictured right), said: "The farming sector in general is already under huge pressure. The increase in energy prices, which in some cases have been reported to be an extra £1,000 a month for dairy businesses, is a blow for all in the industry."

Whilst farm businesses have different contracts to private holdings when it comes to their energy suppliers, the overarching problem remains the same.

"There will be many farm holdings who need to renew their energy contracts this year and they will no doubt be faced with hiked up prices. This in addition to higher feed and fertiliser prices could prove to be too much for some businesses," added Dai Davies.

The FUW has written to The Rt Hon Kwasi Kwarteng MP, Secretary of State for Business, Energy and Industrial Strategy, urging him to consider and implement policies which would negate the severe impacts of rising energy prices on Welsh and UK businesses.

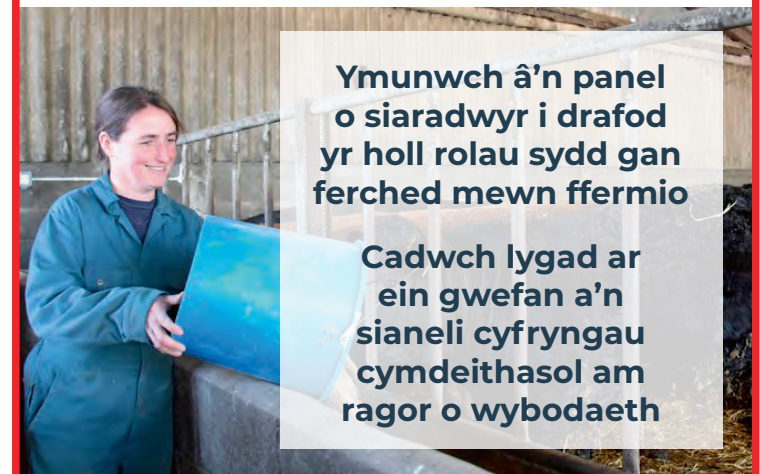


CADWCH Y DYDDIAD:

Gweminar ar-lein Merched mewn Amaethyddiaeth yn dathlu Diwrnod Rhyngwladol y Menywod, dydd Mawrth 8 Mawrth 2022

Ymunwch â'n panel o siaradwyr i drafod yr holl rolau sydd gan ferched mewn ffermio

Cadwch lygad ar ein gwefan a'n sianeli cyfryngau cymdeithasol am ragor o wybodaeth



Showcasing the important role farmers play when it comes to looking after farmland birds

THE FUW once again joined forces with the Game and Wildlife Conservation Trust (GWCT) to showcase the important role farmers play when it comes to looking after farmland birds, as well as helping farmers understand what they can do on their farms to protect birds.

A series of events were arranged ahead of the Big Farmland Bird Count (4-20 February), the FUW jointly hosted a webinar with the GWCT at the beginning of February and organised 2 on-farm information events.

The North Wales event was held on Thursday February 3 and was hosted by FUW President Glyn Roberts; the South Wales event was held on Tuesday February 8 and was hosted by FUW Deputy President Ian Rickman, (pictured above).



“There’s lots of fantastic work already being done out there on Welsh farms, so a big part of the Big Farmland Bird Count is about collecting that information and showcasing it.”

Guest speakers at the webinar, which was being chaired by FUW Deputy President Ian Rickman, included Matthew Goodall from the GWCT, who talked about the importance of taking part in the Big Farmland Bird Count, the background behind the initiative and how farmland bird numbers can be increased; FUW Senior Policy and Communications Officer Gareth Parry, (pictured below right), addressed policy issues that affect how we produce food and look after the environment for the benefit of Wales’ bird species and the webinar also heard from Welsh beef and sheep farmer and former FUW Meirionnydd county chairman Geraint Davies, who has previously participated in the Big Farmland Bird Count.

Speaking after the event, Gareth Parry said: “There is little doubt that some agricultural policies have had a direct impact on bird populations since the mid 20th Century and despite efforts to enhance biodiversity and the environment over more recent decades, around a third of bird species in Wales are still thought to be in significant decline due to practices such as undergrazing.

“Nevertheless, the UK’s departure from the European Union allows the Welsh Government to introduce its own Agriculture Bill based on Wales’ needs and requirements. How can we ensure that future agricultural policies are designed to support family farms in producing sustainable food while simultaneously improving the environment for the benefit of Wales’ bird species?”

FUW Deputy President Ian Rickman said: “The aim of the Big Farmland Bird Count is to raise awareness of the great conservation work being done on farms across Wales and to highlight what can be done to help farmland birds survive this difficult time of year so that the breeding populations are increased.”



Matthew Goodall said: “There’s lots of fantastic work already being done out there on Welsh farms, so a big part of the Big Farmland Bird Count is about collecting that information and showcasing it.

“It’s also a fantastic opportunity to highlight what more can be done for farmland birds, and we’ve got great examples where declines have been reversed alongside productive farming.

“With biodiversity a big part of future payments, farms will need to demonstrate what they’ve got, and the Big Farmland Bird Count is a great way to collect that information.”

The 2022 Big Farmland Bird Count takes place from 4-20 February. This important initiative offers a simple means of recording the effect of any conservation schemes currently being initiated by farmers and gamekeepers on their land. More details can be found here:

www.bfbc.org.uk/take-part/

Trafod atgofion melys

ROEDD hi’n annhebygol iawn mai Capel Seion, Llandysul fyddai un o’r pynciau trafod cyntaf wrth i Uwch-Swyddog Gweithredol Sirol Sir Gaernarfon Undeb Amaethwyr Cymru, Gwynedd Watkin, gyfarfod â Mabon ap Gwynfor, Aelod o Senedd Cymru ar ran etholaeth Dwyfor Meirionnydd, ar fferm yn ddiweddar. Ond dyna’n union a fu.



Gwynedd Watkin (chwith) a Mabon ap Gwynfor AS.

Yn ystod ei sgwrs â Mabon, esboniodd Gwynedd fod ei Dad, sef y diweddar Barchedig John Watkin, wedi bod yn weinidog ar gapel Seion rhwng 1964 a 1972, lle erbyn hyn mae tad Mabon yn weinidog, sef y Parchedig Guto Prys ap Gwynfor.

Nid dyma’r unig gyd-ddigwyddiad chwaith o ran cefndir y ddau. Pan adawodd teulu Gwynedd Landysul, bu iddynt symud i Dreforys yng Nghwm Tawe lle’r aeth ei dad yn weinidog ar gapel y Tabernacl. Blynnyddoedd wedyn bu i dad Mabon ddod yn weinidog ar gapel Hebron yng Nghlydach, hefyd yng Nghwm Tawe, cyn iddynt hwythau symud i Landysul.

Dywedodd Gwynedd: “Roeddwn mor falch o gael cyfarfod â Mabon a chael y cyfle i edrych yn ôl ar gymaint o atgofion melys iawn o fy nghyfnodau yn Llandysul a Chwm Tawe. Mae’r ddau ohonon ni wedi cael ein dylanwadu gan atgofion hapus iawn o’n hamser yn Llandysul a Chwm Tawe cyn i’n gyrfaoedd ein harwain i rannau eraill o Gymru.”

This article is in English on the FUW website - News - Y Tir News: “Discussing fond memories.”



rdp
Law

2022.
Start the year
off right.

Contact our team today to get your Will and Lasting Power of Attorney arranged

01633 413500 | individuals@rdplaw.co.uk | www.rdplaw.co.uk

Concerns raised about changes to livestock movement rules

“The FUW fully recognises and supports the need to trace livestock effectively, but believes some elements of the proposals will add bureaucracy for farmers in an industry already overflowing with red tape.”



THE FUW has raised its concerns regarding proposed changes to the registration and reporting of livestock movement.

In its response to the Welsh Government's 'Changes to Livestock Identification, Registration and Movement Reporting Consultation', the Union highlighted numerous areas where the proposals would lead to increases in costs and bureaucracy for farmers.

“These come at a time when the UK is agreeing trade deals with countries such as Australia and New Zealand where such burdens do not come close to what is already required of Welsh farmers, let alone what is proposed,” said FUW Deputy President Ian Rickman.

Mr Rickman said the FUW fully recognises and supports the need to trace livestock effectively, but believes some elements of the proposals will add bureaucracy for farmers in an industry already overflowing with red tape.

“Members felt strongly that aspects of the proposals would result in negligible improvements for the traceability of livestock in comparison to the extensive movement reporting system that is already in place across all species, and that the evidence provided to justify the changes was insufficient or absent.”

A particular concern expressed by members related to the proposed mandatory introduction of same day reporting of livestock movements by Central Point Recording Centres (CPRC's), which include markets, abattoirs and assembly/collection centres.

“Such stringent demands would place unacceptable increased pressure and bureaucracy on the important service provided by CPRC's, and could lead to the industry losing this important service if markets opt out,” said Mr Rickman.

“This would mean even more financial and time costs for

farmers, many of whom simply don't have access to the technology and internet coverage necessary to fill the gap this would leave,” he added.

The Welsh Government's intention to incorporate all livestock movements, registrations and notification into EID Cymru - which currently only records sheep movements - also raised concerns in terms of the ability of the system to interact with existing farm management databases and multispecies systems currently being developed by other UK administrations - something that is seen as essential.

“This is a particular concern for farmers whose land straddles the Wales/England border, as they would be required to comply with Welsh and English rules as well as two different recording systems,” said Ian Rickman.

Members however praised the current British Cattle Movement Service's (BCMS) friendly interface, automated telephone services and bilingual helpline service.

“Overall, we are very concerned about the impracticalities of these proposals. We understand that the Welsh Government wants us to move to an online system but rural Wales is renowned for its poor internet connectivity and this will cause massive inconvenience and possible unfair penalties.

“There are many elements of the current regime which are already more stringent than the EU regulations on which they are based.

“The introduction of further bureaucracy and costs after we have left the EU's regulatory regime and at a time when new trade deals may be about to open the floodgates to foreign produce not subject to anything like the levels of controls we already have would be completely unacceptable,” he added.

Teyrnged i gyn Swyddog Ardal UAC

YN ddiweddar, bu farw Mr Lyn Williams, cyn Swyddog Ardal UAC, (*gweler ar y dde*).

Ymunodd Lyn ag UAC ym 1977 a bu'n gwerthu a threfnu yswiriant am 30 mlynedd, gan ymdeol yn ystod 2007. Ardal Lyn oedd Cwm Gwendraeth, Sir Gaerfyrddin, ac roedd cartref y teulu ym Mhontyberem yn ddelfrydol ar gyfer ei waith.

Roedd Lyn yn ymwneud yn llwyr â'i gymuned leol a bu'n gweithio fel gwirfoddolwr yn yr Eisteddfod Genedlaethol ac Eisteddfod yr Urdd am flynyddoedd lawer. Roedd Lyn hefyd yn hoff iawn o hen dractorau, a chluddwyd ei arch i'r gwasanaeth yng Nghapel Caersalem, Pontyberem gan ei dractor Massey Ferguson.

Roedd Lyn yn ynad heddwch uchel ei barch am nifer o flynyddoedd, a'r angerdd mawr arall yn ei fywyd oedd y Scarlets ac anaml y byddai'n colli gêm gartref.

Roedd Dirprwy Lywydd UAC, Ian Rickman, yn bresennol yn yr angladd i gynrychioli UAC yn ogystal â nifer o staff wedi ymdeol ac aelodau.

Ychwanegodd Ian: “Roeddwn yn nabod Lyn yn dda iawn ac rwy'n ymwybodol iawn o'r cyfraniad rhagorol a wnaeth i UAC dros nifer o flynyddoedd. Estynnaf fy nghydymdeimlad a chydymdeimlad pawb yn UAC i deulu Lyn ar yr adeg anodd hon.”

This tribute is in English on the FUW website - News - Y Tir News: "Tribute to past FUW Area Officer."



“We understand the needs of our customers at a grass roots level”

by Haydn Jones, Specialist Agricultural Finance Broker, Pennant Finance

PENNANT Finance are specialist agricultural finance brokers, established over 30 years ago to help farmers find competitive rates of business finance.

We offer a wide range of finance facilities and services for the agricultural sector including Mortgages, loans, bridging finance, refinance of existing debt and unsecured loans for any business purpose.

Our vastly experienced team all come from a farming background so understand the needs of our customers at a grass roots level.

Not all enquiries for finance are straightforward, but with over 24 years' experience working within the agricultural sector of a high street bank and over 50 years of combined experience of working within the agricultural finance industry, our teams knowledge, expertise and contacts have successfully helped clients find the financial solutions they needed for their business.

We also provide a banking review service for farmers looking for assistance with dealing with their business financial matters.

Pennant Finance are independent and not tied to any one UK lender, this enables us to source and structure the best possible and most appropriate finance deal for our clients individual needs.

Contact your local county office for further information about Pennant Finance and how they could help you.



SAVE THE DATE:

Women in Agriculture online webinar celebrating International Women's Day on Tuesday 8th March 2022



Join our panel of speakers discussing all the roles women have in farming

Keep an eye on our website and social media channels for more information

Brecwastau cangen Caernarfon yn codi swm aruthrol o arian i elusennau unwaith eto

Cangen Caernarfon

CAFWYD amser gwerth chweil gan bawb a fynychodd y tri brecwast a drefnwyd gan gangen Sir Gaernarfon o Undeb Amaethwyr Cymru. Mae dros £3,000 wedi cael ei gasglu ar gyfer yr elusennau yn barod gyda mwy o roddion yn dod i mewn.

Er gwaethaf cyfyngiadau Covid, denodd yr achlysur gefnogaeth wych gan y cymunedau lleol. Dywedodd Cadeirydd Sir Gaernarfon, John Hughes:

"Unwaith eto mae'n rhaid diolch i'r gwragedd fferm, eu teuluoedd a'u ffrindiau am ddarparu brecwastau bendigedig gan ddefnyddio cynnyrch lleol. Diolchwn i Sion a Delyth Edwards, Dylan a Jackie Williams ac Anne Franz a'u timau gweithgar am eu hymdrechion ardderchog sydd wedi codi gymaint o arian at elusen Llywydd yr Undeb sef Sefydliad DPJ a hefyd tuag at Gronfa Coron Eisteddfod Genedlaethol Llŷn ac Eifionydd 2023.

"Yn ogystal hoffwn ddiolch i'r holl fusnesau lleol isod am eu cefnogaeth a rhoddion amhrisiadwy, a hefyd i bawb a fynychodd y tri digwyddiad, heb eu cyfraniad hwy byddai wedi bod yn amhosib casglu swm mor anrhydeddus."

This article is in English on the FUW website - News: "FUW Caernarfon breakfasts raise phenomenal amount of cash for charity once again."

Diolch i'r busnesau a gyfrannodd at y digwyddiadau brecwast yng Nghaernarfon:

K.E. Taylor Daughter & Son, Cricieth; O.G. Owen a'i Fab, Caernarfon; Oinc Oink, Llithfaen; Cig Ceirion, Sarn; Siop Fferm Gerlan, Penygroes; Hufenfa De Arfon, Rhydygwystl; Welsh Lady, Y Ffôr; Becws Islyn, Aberdaron; Llechwedd Meats, Llangefni; Cotteswold Dairy; Llaeth y Llan - Village Dairy, Llanefydd; Wyau Llŷn Eggs, Pwllheli; Wyau Fron Oleu, Tremadog; Wyau Desach, Clynnog Fawr; Y Cwt Wyau, Hirwaun; Morrisons Caernarfon; Caffi Idris, Cricieth; Cigoedd y Llain, Pwllheli; Oren, Porthmadog; R & H Evans, Pwllheli; R & I Jones, Caernarfon; Cegin Nani; Henllan Bakery, Dinbych; Poblado Coffi; Caffi Tŷ Newydd, Uwchmynydd; Blas ar Fwyd, Llanrwst; Oriol Plas Glyn y Weddw; Total Produce, Lerpwl; Dwyfor Coffi; Becws Glanrhyd, Llanaelhaearn.



Delyth, Sion, Ffion, Ela a Rhian yn Siop Fferm a Caffi Abersoch.



Mary, Jackie, Gwawr, Dylan a Cath yn Fferm Bryn Hynog.



Efa, Ffion, Buddug, Anne, Eirian a Ellen yng Nghaffi Anne.

Farmhouse breakfast events a huge success

Glamorgan branch

A fantastic start to the Farmhouse Breakfast week! Alongside hosts Rhodri and Gaynor Davies of Rosedew Farm, Llantwit Major, the Glamorgan F.U.W. team enjoyed a healthy and hearty start to their day on Monday January 17 raising £300 for charity. The Farmhouse Breakfast event allowed all invited to talk with the DPJ Foundation, local Councillors and Darren Johns, Rural Crime Office for South Wales as well as chatting to their County Executive Officer Sharon Pritchard and Deputy County Executive Officer Helen Thomas. F.U.W.'s Glamorgan County Chairman Richard Walker gave a huge thank you to all the local producers who had very kindly donated produce.



Thank the following businesses and organisations for their support towards the Farmhouse Breakfast Event:
Llaethdy Carno Dairies; Farmers' Pantry; Cyw Hapus; Glanmores, Caerphilly; Castle Howell; Double Trouble Coffee and Daisy Graze.



THE Montgomeryshire branch of the F.U.W. recently joined the DPJ Foundation for breakfast, as part of the Union's farmhouse Breakfast week.

The event, which was arranged by local DPJ Foundation volunteers and held at the Wynnstay Inn, Llansilin on Saturday January 22, was well attended by members and farmers and raised over £600 for the charity.

F.U.W. Montgomeryshire County Executive Officer Emyr Wyn Davies said: "I thank the team at the Wynnstay Inn for the warm welcome and their contribution towards the F.U.W.'s Farmhouse Breakfast Week 2022 campaign. A big thank you also goes to everyone who supported us, including all the sponsors and also the team who cooked and served all the breakfasts."

F.U.W. President Glyn Roberts added: "It was a wonderful opportunity for us to get together and discuss many farming matters that occupy our minds. Nothing beats sitting round the table with family and friends and sharing thoughts over cups of tea and a wonderful breakfast."



A warm welcome at the Wynnstay Inn, Llansilin for the Farmhouse Breakfast campaign 2022 - joined by F.U.W. president Glyn Roberts and friends.

Montgomeryshire branch

Brecon and Radnor officials and staff attended a breakfast meeting with James Evans, Brecon & Radnor MS at the F.U.W. Pavilion on Monday January 24.

After breakfast, freshly cooked by Deputy County Executive Officer Kath Shaw, topics for discussion included the future of farm support, environmental schemes and tree planting, carbon credits and the resulting decline of family farms.

Thank you to everyone who attended and for an interesting and lively debate.

Brecon & Radnor branch



Changes to the RWAS

PREVIOUS Vice Chair Mrs Nicola Davies has been appointed as the new Chair of Council of the RWAS following Mr David Lewis' decision to retire after over 40 years of dedicated service to the Society. Nicola will become the first female to be appointed as the Chair of Council in the Society's history.

Mrs Davies, from Ceredigion, has exhibited Welsh Cobs at the Royal Welsh for many years and first joined Ceredigion Advisory Committee in 1996. With her enthusiasm for the industry, Nicola has previously taken on a variety of roles, including Chief Announcer and Commentator, stewarding within the Sponsorship and Hospitality sections.

Mr John T Davies, Chair of Board of Directors commented on the new appointment: "Nicola Davies is a natural choice to become the Chair of the Council of the RWAS.

"She has grown up in the show rings of Wales and has given a lifetime of distinguished service and support to the RWAS, as a successful Welsh Cob exhibitor, Steward, Lady Ambassador, Senior Commentator and Vice Chair of Council.

"Nicola is a capable and commanding figure who without doubt will be an excellent ambassador for the Society."

This comes at a time of more change within the Society as Chief Executive Mr Steve Hughson has announced his retirement after the 2022 Royal Welsh Show. After giving nearly 10 years loyal service to the Society, Steve has been considerate in giving 10 months' notice of his retirement.



Steve Hughson.

"The greatest investment a Show Society can make is to appoint an industrious and committed Chief Executive, that we did a decade ago. At that time Steve indicated that he would dedicate ten years of his life as leader of the Society and he has done so with distinction," said John T Davies.

"As Steve retires from office after the 2022 Show, we will have an opportunity to reflect on a very successful tenure of growth and stability. Steve has most definitely put the Society on sound footings at a time of unprecedented challenge. The Society owes Steve a huge debt of gratitude, it's been a pleasure to work alongside him."

The Society would like to appoint a new Chief Executive before the summer Show in order to have a hand over period in the lead up to events.



Fuw Vice President Eifion Huws congratulating Nicola Davies on her new appointment.

DAVIS MEADE

Rural Land Management



Philip Meade
Oswestry



Kathryn Williams
Oswestry



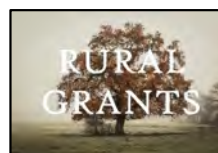
Eifion Bibby
Colwyn Bay

Oswestry:
Telephone: 01691 659658
Email: oswestry@dmpcuk.com

Colwyn Bay:
Telephone: 01492 510360
Email: colwynbay@dmpcuk.com

Website: www.dmpcuk.com

A Full Range of Land Agent Services:



Fuw Members free 30 minutes initial advice



Welsh Bovine TB Rules



From January 17 2022, two new changes to the rules relating to a bovine TB breakdown were applied in Wales.

Change 1: Officially TB Status Withdrawn (OTFW) as Standard

All new breakdowns across Wales (with 2 exceptions listed below) will be classified as Officially TB Free Status Withdrawn (OTFW).

There are two exceptions, which will continue to be classified as Officially TB Free Status Suspended (OTFS):

- OTF herds where one or more suspect slaughterhouse cases(s) have been disclosed and culture results are still pending
- Breakdown herds where non-homebred animals positive to Interferon-gamma and / or IDEXX antibody testing only (i.e. no skin reactors) have been disclosed and disease has not been confirmed on post-mortem examination / culture results.

OTFS herds where the breakdown started prior to November 15 2020 will remain OTFS unless any further skin test reactor is disclosed, or epidemiological risk factors apply.

What does this change mean for me?

When a herd is classified as OTFW, two clear consecutive TB tests are required at a minimum interval of 60 days, with at least the first test being conducted at severe interpretation, in order to regain OTF status and for movement restrictions to be lifted. Additional actions are also taken in an OTFW breakdown. These are:

- Animals moved from the breakdown herd are traced and tested if appropriate
- Neighbouring herds are investigated and tested if appropriate
- Additional animals which are at risk of infection may be considered for slaughter as Direct Contacts
- Slaughter of the remaining animals in the group or herd may be considered if infection is severe and extensive

Change 2: Inconclusive Reactors

All Officially TB Free (OTF) herds in Wales, in which only Inconclusive Reactors (IRs) are disclosed, will remain restricted until the retest of the IRs, when either:

- IRs are retested negative and the herd and individual movement restrictions are lifted or,
- One or more of the IRs become reactors and / or become IRs for the second time (in which case they will now also be considered as reactors) and the OTF status of the herd becomes withdrawn (OTFW).

This also applies to any test where IRs are disclosed in a part test with TT2 date before January 17 but the final part test is completed on or after January 17.

Cross Compliance rules for 2022

THE vast majority of Cross Compliance rules continue to apply as in 2021. The Welsh Government has updated the fact sheets and associated sections of the Verifiable Standards for 2022 to reflect changes in requirements, good practice and to clarify wording:

SMR 4: food and feed law. Minor changes to clarify wording of requirements.

SMR 6: pig identification and registration. New guidance on tagging pigs for export included. Contact details updated.

SMR 7: cattle identification and registration. New guidance on tagging cattle for export included.

SMR 8: sheep and goat identification. New guidance on tagging sheep and goats for export included. Requirement to retain movement documents updated.

SMR 10: restrictions on the use of Plant Protection Products (PPP). Clarification of PPP definition and retained EC provisions. Contact details updated.

GAEC 6: maintenance of soil and organic matter. Link to Environmental Impact Assessment (EIA) guidance updated.

All of the associated documents can be found on the Welsh Government website - www.gov.wales/cross-compliance-2022

NETTEX

Make your

MARK

with

MARKSMAN

WIN*

TruTest XRS2 Stick Recorder

(worth £997.50 + VAT courtesy of Wise Agriculture) in our free-to-enter competition. Simply scan the QR code and follow the instructions to enter.



Formulated for and tested on UK farms



- Long lasting
- Vibrant
- Robust

01283 524222

sales@net-tex.co.uk

www.net-tex.co.uk



*Terms and conditions apply. See website for details.

“Please give farm safety serious consideration”

by Alun Elidyr, Wales Farm Safety Partnership ambassador

IT'S that time of year when many people make new year resolutions...make promises that they will endeavour to keep for the year. Trying to live our lives healthier and happier will be near the top of the list for most of us!

But for farmers there's one resolution that every one of us should include. Let's all make a resolution TODAY to reduce the risks of farm accidents to ourselves, our families, workers and all those who visit our farms in 2022.

Unfortunately, in 2021 we went through yet another year of tragedies on Welsh farms. Too many families have been devastated by the loss of a loved one, or by incidents that

have led to life-changing injuries. All these farmers and their families are in our thoughts and I would ask every FUW member to decide as they read this, that this will be the year when they give farm safety serious consideration.

If there is anything you can do to make your farm safer, then let this be the year when you find out what you should do to keep yourself and your loved ones safe.

The role of the Wales Farm Partnership (WFSP), a collaboration between most of the key agricultural stakeholders in Wales, is to work together to encourage farmers to change their behaviours, to save lives and livelihoods. We need your help, your commitment.

As one of the WFSP ambassadors, I was delighted to visit our first ever stand at the Winter Fair at Llanelwedd, when hundreds of visitors stopped by to chat about farm safety, pick up some of the free WFSP signs, booklets and keyrings available and enter a competition that saw five lucky individuals win a quad-bike safety helmet or tickets to next year's Winter Fair.

Most of us know that there are a number of areas where we can probably do a lot better. Keeping children safe, moving and overturning vehicles, handling machinery and livestock and working at heights are potential hazards on every farm but there are many more.

Remember, help is at hand. Subsidised training courses, fully-funded guidance from a farm safety mentor, free guidance and publicity materials will all help you 'stop, think and stay safe on your farm.'

To get off to a good start, why not follow and like WFSP on social media channels. Just look up Farm Safety Wales on Facebook and Twitter to find out what campaigns and themes are planned, what resources you can access and how you can make your farm a safer place.



Meleri Jones (far right) Wales Farm Safety Partnership Health and Safety Co-ordinator and Tina Morgan from the IOSH Rural Industries Group, get the 'stay safe on your farm' message out to visitors at the 2021 Winter Fair in Llanelwedd.

Tipping - What's the problem?

Following a horrific fatality on a farm recently, we thought it would be important to raise some awareness about trailer tipping safety

Guidance

Drivers visiting a site/farm must report to the site office/farmer. The site operator/farmer and the visiting driver need to speak to each other and co-operate, for example:

- Making sure that everyone is aware tipping is about to happen and only those people involved in the tipping are in the immediate area.
- Arranging for wheel-stops to be used.

The site operator/farmer must make sure that tipping faces are suitable and safe, for example by making sure that tipping platforms faces are compacted on landfill sites etc., and that there are no steep side slopes.



Tipping sites should be:

- Level
- Firm and stable (the whole site must be able to hold the vehicle and load during tipping)
- Clear overhead (there must be no power cables or pipe work)

Articulated vehicles must be tipped with the cab and trailer in line. Always check that the load is evenly spread across the vehicle. The vehicle should remain level at all times, even if it is driven forward during tipping.

Wheel-stops must be used when possible to help position vehicles.

- They must be large enough to let the driver know when to stop.
- When tipping into a pit or trench, they are enough from the edge to prevent the vehicle overloading the edge.

Vehicles should not touch ANY cables

It is not always clear what sort of cable might have been touched. Some telephone and electricity cables look similar. If this does happen, and the situation cannot be made safe immediately:

- The driver should leave the vehicle by jumping as far clear as possible.
- The driver must NEVER make contact with the ground and the vehicle, or anything touching the vehicle at the same time as this would complete an electrical circuit and may cause serious injury or death.
- The driver must then make sure that no-one else comes into contact with the vehicle or anything touching it, while it is still touching the power cable.
- The surrounding area should be secured, and the local electricity supplier contacted to arrange for removal of the power supply. If you do not know your local number, call 999.
- DO NOT 'RISK IT'!

Make sure that the tailgate is safe. The tailgate:

- Should be released and then locked open or removed completely, before tipping starts.
- If the load is released through an opening or chute, the tailgate latch must be strong enough to take the full impact of the load when it is tipped.
- Check that the load will be released smoothly and safely and that it cannot jam under the tailgate.

Never allow anyone to stand or walk behind the vehicle when the body is raised or during tipping. Whenever possible, tipping mechanisms should be controlled from the cab.

When raising or lowering the body, the driver should never leave the vehicle and should make sure that the cab doors are closed.

- The use of 'donkey engines' to drive the tipping mechanism is not recommended.
- Drivers should be experienced enough to anticipate loads sticking.
- The vehicle must never be driven in order to shake free a stuck load. If the load does stick, the body must be lowered and the load freed before the body is raised again.
- Aids such as mechanical 'Vibratory Discharge Systems' can help.
- The operator should always make sure that the body is completely empty after tipping.
- The operator should not drive more than a few metres forward to make sure the load is clear, and should only do this after checking the load is at the bottom of the tipping body.
- If the vehicle begins to topple over, the driver should brace him/herself against the back of the driver's seat and hold firmly on to the steering wheel. The driver should never try to jump out of a lorry that is falling over.

When closing a hydraulic tailgate, extreme caution must be taken that nobody is nearby who could get fatally trapped by the closing door. View of this is usually completely obstructed by the body of the trailer. It would therefore be safer to close the tailboard with the trailer slightly raised so that there is some vision to a person at the rear of the trailer.

Time to Talk about mental health

by Elen Gwen Williams, Charity Marketing & Engagement Assistant, The DPJ Foundation

TIME To Talk Day took place on the first Thursday of February, it's a day where we ask people across the UK to have a conversation about mental health and to check in on each other.

It's been a difficult two years with the pandemic, and it's a busy time of year for farmers, with lambing, calving and general farm work so it's never been more important to talk about our mental health. Talking about something makes us feel less alone, more able to cope and hopefully encourage each other to seek support when we need to.

The agriculture industry in Wales is a close community, and we should all be supporting each other. We encourage you to sit down, have a cuppa and chat with your friends and loved ones about things that are worrying you and about mental health.

Why is talking important?

We all have mental health and statistics show that 1 in 4 of us are affected by mental health problems some time in our lives, therefore we all need to be comfortable talking about mental health, by talking about it we can support ourselves and others. You could change somebody's life.

If you are worried about someone, please contact the DPJ Foundation, we are here for anyone who needs someone to listen to.

Our "Share the Load" service is a 24/7 confidential call and text line. Call 0800 587 4262 / Text 07860 048799.



We all know how to talk and have a conversation, but do we know how to open a conversation about mental health? Don't be shy to ask how someone's feeling. These are some tips for you:

1. Choose an appropriate place, somewhere without distractions.
2. Use your body language to show you're listening and make sounds of agreement.
3. Use silence, don't fill the gaps.
4. Use their words.
5. Ask open questions that need more than a yes/no answer - 'How are things? I've noticed you don't seem quite yourself.'
6. Don't be distracted.
7. Show your empathy and understanding - try not to look shocked.
8. Avoid giving your view of what's wrong, or what they should do. Sometimes just getting it off your chest is enough.

"Thank you FUW team"

by Kate Miles, Charity Manager, The DPJ Foundation

THANK you to the FUW team across Wales for hosting brilliant breakfast's all over the country, raising money for the DPJ Foundation.

Some of our volunteers also arranged their own events. It was a great opportunity not only to show our support to Welsh farm produce but also to support each other by sitting down and having a conversation about whatever is on your mind.

Thank you to everyone who supported in any way, we are very grateful.



RABI's new services for 2022

WITH worryingly low levels of mental wellbeing identified by its Big Farming Survey, RABI has launched two new support services. The charity's proactive response focuses on providing early, preventative wellbeing support for farming people.

RABI's head of partnerships, Suzy Deeley, says the new in-person mental health counselling and farming-focused mental health training initiatives will complement existing schemes. Both services can be easily and consistently accessed by the farming community.

The free, confidential in-person counselling is delivered by BACP accredited counsellors. Anyone feeling they could benefit from talking to a professional can access via RABI's 24/7 helpline on 0800 188 4444. Clinical or GP referrals are not necessary, with counsellors responding to initial requests for support within 24 hours. Counselling sessions can take place face-to-face, by telephone or video conferencing and are tailored and led by each individual.

In addition to in-person counselling, RABI is launching the first suite of accredited/certified mental health training tailored for the farming sector. The training provides a valuable tool for the agricultural community to help them feel comfortable talking about how they are feeling. A unique feature of the training is the provision of aftercare for trainees. All who receive training will have access to ongoing support, so no one shoulders the weight of difficult conversations alone.

Both services are being delivered in partnership with Red Umbrella, a not-for-profit specialist provider of accredited mental health counselling, mental health training and aftercare support.

O fyd addysg i fyd amaeth

gan Llinos Angharad Owen, Tir Dewi ac aelod UAC

MAE cymaint o sôn y dyddiau yma am y gair "arallgyfeirio" ond beth mae hynny yn ei olygu go iawn? Wel, ehangu profiadau neu newid o wneud un peth i wneud rhywbeth arall hollol wahanol. Dyma yn union wnes i ddwy flynedd yn ôl gan newid cyfeiriad yn llwyr o fyd addysg i fyd amaeth.

Yr oeddwn ym myd addysg am dros ugain mlynedd fel athrawes, Pennaeth Cynorthwyol ac yna Pennaeth Mewn Gofal mewn ysgol uwchradd yng Ngwynedd. Cyfnod o weithio fel Swyddog Addysg Plant Mewn Gofal gyda Chyngor Conwy ac yna penderfynu go iawn fy mod am helpu ar ein fferm deuluol ac arallgyfeirio'r busnes. Erbyn hyn mae gennym ddau dŷ gwyliau sy'n cynnig gwasanaeth dwyieithog ac sy'n addysgu'r ymwelwyr o'n hanes a'n diwylliant yma yng nghefn gwlad Eryri. Yr ydym hefyd, ynghyd â chriw o ffrindiau, wedi sefydlu cystadleuaeth cneifio gwella rhyngwladol, sef "Cneifio Gelert" sy'n mynd o nerth i nerth.

Mae gweithio gartref ar y fferm gyda fy ngŵr Gareth yng nghanol cefn gwlad Eryri wedi bod yn agoriad llygaid i mi o ran y diwydiant ffermio ond hefyd y gymuned ffermio. Mae'r pwysau, gwaith papur a'r newidiadau diddiwedd yn dod â'i dreialon ei hun. Yn ystod y flwyddyn ddiwethaf mae pob un ohonom wedi wynebu her annisgwyl iawn yn ein bywydau a hynny yn sgil y pandemig. Yr ydym i gyd wedi gorfod addasu ein bywydau bob dydd ac y mae rhai ohonom yn teimlo'r unigedd yn fwy nag erioed.

Pa gymorth sydd allan yna i ffermwyr a'u teuluoedd? Mae sawl sefydliad ac elusen arbennig o dda yn cefnogi ffermwyr a'u teuluoedd, un elusen yw Tir Dewi. Ers mis Ionawr 2022 'rwyf wedi cael fy mhenodi yn Swyddog Hyrwyddo a Chodi Arian gyda'r elusen. Fy rôl yw hyrwyddo a chodi ymwybyddiaeth o'r elusen yng Ngogledd Cymru.

Gall gofyn am gymorth weithiau fod y rhan anoddaf o gael cymorth ond unwaith y byddwch wedi cymryd y cam cyntaf hynny gall eich stori chi fod yn obaith i rywun arall. Mae Tir Dewi yno i helpu a chefnogi ffermwyr a'u teuluoedd. Mae rhannu, siarad a gwrando'n gwneud i ni gyd deimlo'n well.

Ewch draw i'n gwefan www.tirdewi.co.uk neu cysylltwch gyda mi llinos@tirdewi.co.uk

This article is in English on the FUW website - News - Y Tir News: "From education to agriculture."



"Mae Tir Dewi yno i helpu a chefnogi ffermwyr a'u teuluoedd. Mae rhannu, siarad a gwrando'n gwneud i ni gyd deimlo'n well."

ANGLESEY

anglesey@fuw.org.uk

01248 750250

Cyfarfodydd
Pwyllgor Gwaith

Yn ystod cyfarfod mis Ionawr cafwyd cyflwyniad gan Dr Hazel Wright, Uwch Swyddog Polisi'r Undeb ar ymgynghoriad Llywodraeth Cymru i gyflwyno rhaglen ddiwygiedig i Ddileu'r Diciáu.

Mi fydd Gareth Parry, Uwch Swyddog Polisi a Chyfathrebu'r Undeb yn ymuno â ni yn ystod cyfarfod mis Chwefror (yr 8fed) i drafod Dogfen Ymgynghorol Llywodraeth Cymru ar ddeddfwriaeth a pholisi cynllunio ar gyfer ail gartrefi a llety gwyliau tymor byr.

Os hoffech chi gael dweud eich barn a dysgu mwy am gynnwys yr ymgynghoriad yma, cysylltwch â ni i dderbyn y manylion i ymuno drwy Zoom.

At January's meeting Dr Hazel Wright, the Union's Senior Policy Officer, gave a presentation on the Welsh Government's consultation on the introduction of a revised TB Eradication programme. Gareth Parry, the Union's Senior Policy and Communications Officer will be joining us at the February meeting (8th) to discuss the Welsh Government's consultation document on planning legislation and policy for second homes and short-term holiday lets. If you would like to have your say and learn more about the content of this consultation, please contact us for details to join through Zoom.

Her
#Run1000

Mae'n bosib eich bod wedi gweld rhai o staff y sir allan ar ffyrdd yr Ynys yn cerdded neu redeg yn ystod mis Ionawr, hynny wrth ymgymryd a'r sialens #Run1000, gydag aelodau o'u teuluoedd, ffrindiau a chyfeillion pedair coes!

Cewch yr hanes yn llawn yn rhifyn mis Mawrth Y Tir.

You may have seen some of the county's staff out walking or running on the Island's roads during January, as they take part in the #Run1000 challenge, with members of their family, friends and four-legged friends! We'll have the full story for you in the March issue of Y Tir.

BRECON & RADNOR

breconandradnor@fuw.org.uk

01982 554030

Staffing arrangements
in Brecon & Radnor

by Guto Bebb, FUW Group Managing Director



I want to confirm our proposals for the staffing structure in Brecon & Radnorshire. Catrin Price left us in the autumn and we wish her well in her new role. That left us looking at various options whilst Kath Shaw held the fort on a day-to-day basis.

Having consulted with local FUW officials and debated the issue at length at Board level our view is that we need a County Executive Officer (CEO) for Brecon & Radnor and we will be advertising for this post in late Spring.

Why the delay? In simple terms the ability to deal with SAF forms and the impending twelve weeks of SAF forms that we are facing from mid-March onwards would not be the best of circumstances into which we would be trying to embed a new CEO. As such, we took the decision to ask Kath to lead on the SAF front but supported by two very

experienced County Executive Officers, namely Gwynedd Watkin from Caernarfonshire and Emyr Davies from Montgomeryshire.

Kath has experience of doing the work associated with SAF having supported two previous CEOs in the task and I have every confidence in her experience. However, the family approach of the FUW to problems is to offer help and support and that is exactly what Emyr and Gwynedd have offered.

In short therefore, Emyr and Gwynedd will be supporting Kath this year and will be available to support and offer guidance with regards to any unexpected complexity or challenge that might arise. The combined team will have forty years of experience of supporting farmers in Wales and between them will have completed over 1,000 forms last year alone. I have every confidence that those of you using the FUW to complete your forms will be very well served by the Union again this year.

Once SAF is behind us the aim will be to appoint a CEO in good-time to allow him/her to bed down well before the Royal Welsh Show. This decision is not without cost to the Union but we have concluded that Brecon & Radnor is as crucial as any other county when it comes to our ability as a Union to speak for all parts of Wales.

I hope that this clarifies the situation and I look forward to continuing to work closely with Brecon & Radnor officers, elected and employed, to ensure that we serve our members to the best of our ability during 2022.

CARMARTHEN

carmarthen@fuw.org.uk

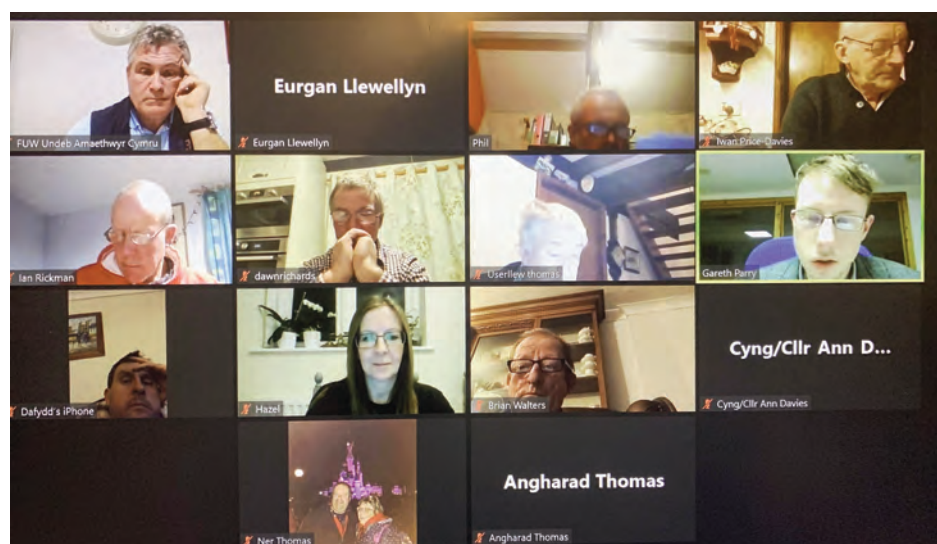
01267 237974

No sub-branch meeting

The sub-branch meeting will not take place this month because of Covid, however, all members are welcome to contact the office and obtain details of our monthly meeting.



County Executive meeting



A well attended County Executive meeting was held on Thursday January 6 via Zoom where many topics were discussed.

Thank you to guest speakers FUW Senior Policy Officer Dr Hazel Wright and FUW Senior Policy and Communications Officer Gareth Parry.

CEREDIGION

ceredigion@fuw.org.uk

01570 424515

Bore Brecwast 2022

Ymunwch gyda ni am frechwast a sgwrs. Mae croeso i chi ymuno gyda thîm Ceredigion yn un o'r lleoliadau isod am frechwast wedi ei baratoi o gynnyrch lleol. Fydd y brecwast yn £10 y pen, a'r elw yn mynd at elusen DPJ.

Join us for breakfast and a chat. You are welcome to join the Ceredigion team at one of the locations below for a breakfast prepared using local produce. The breakfast will be £10 per head and the profit will go to the DPJ Foundation.



Dydd Mercher, 9fed Chwefror / Wednesday 9th February - Canolfan Cymunedol Mynach, Pontarfynach / Mynach Community Centre, Devil's Bridge

Dydd Iau, 10fed Chwefror / Thursday 10th February - Neuadd Caerwedros Hall, Caerwedros

Dydd Gwener, 11eg Chwefror / Friday, February 11th - Neuadd Felinfach Hall, Felinfach

Cysylltwch â'r swyddfa ar 01570 424515 i archebu eich lle. Edrychwn ymlaen at eich gweld. / **Contact the office on 01570 424515 to book your place. We look forward to seeing you.**

MEIRIONNYDD

meirionnydd@fuw.org.uk

01341 422298

Cyfarfod gyda'r Bwrdd Gwlân



Cynhaliwyd cyfarfod ar y cyd gan y ddwy Undeb amaeth ym Meirionnydd gyda Phrif Weithredwr y Bwrdd Gwlân Andrew Hogley, (*gweler ar y chwith*), ar ddiwedd mis Ionawr, a oedd yn ddilyniant i gyfarfodydd blaenorol yn Hydref 2020. Cadeiriwyd gan Liz Saville Roberts AS, ac roedd Mabon ap Gwynfor, Aelod Senedd Cymru hefyd yn rhan o'r cyfarfod.

Cafwyd trosolwg o weithgarwch y Bwrdd, diweddariad ar safleoedd Dinas Mawddwy a Phorthmadog, a'r gwaith diweddaraf i ddatblygu cynnyrch a marchnadoedd newydd i wllân.

The two farming Unions in Meirionnydd held a joint meeting with the Chief Executive of the Wool Board Andrew Hogley, (pictured left), at the end of January, which was a follow-up to previous meetings in October 2020. The meeting was chaired by Liz Saville Roberts MP, and Mabon ap Gwynfor, Member of the

Senedd also participated in the meeting. There was an overview of the Board's activities, an update on the Dinas Mawddwy and Porthmadog sites, and the latest work to develop new products and markets for wool.

#Run1000

Drwy gydol mis Ionawr bu'r Gangen Sirol yn cymryd rhan mewn nifer o deithiau cerdded fel rhan o sialens #Run1000 i gefnogi tîm Cymru sy'n codi arian i'r DPJ Foundation. Un daith oedd oddi amgylch Llyn Trawsfynydd yng nghanol mis Ionawr, (*llun ar y dde*), a hoffem ddiolch yn fawr iawn i bawb ddaeth ynghyd.



Throughout January the County Branch took part in a number of walks as part of the #Run1000 challenge to support the Welsh team raising funds for the DPJ Foundation. One walk was held around Trawsfynydd Lake in mid-January, (picture above), and we would like to thank everyone who came along.

Pwyllgor Gwaith

Cynhaliwyd cyfarfod o'r Pwyllgor Sirol yng nghanol Ionawr, a daeth nifer dda ynghyd ar Zoom unwaith eto. Cafwyd cyflwyniad gan Uwch Swyddog Polisi'r Undeb Dr Hazel Wright, (*gweler ar y dde*), ar y papur ymgynghorol ar y rhaglen gwaredu TB, ac aethpwyd i fanylion ar yr argymhellion. Roedd cryn feirniadaeth ar y cynnwys, gan fod yr hyn a ofynnir amdano yn golygu llawer mwy o bwysau ar ffermwyr, mwy o gwestiynau a chanllawiau, a hynny heb y dystiolaeth ranbarthol i gyfiawnhau hyn.

Diolchwyd yn fawr iawn i Hazel am ei gwaith trwyadl a hynod gydwybodol ar y pwnc. Ymysg nifer o faterion eraill oedd y pryder am y cytundebau masnachol gydag Awstralia a Seland Newydd, y papur trafod diweddaraf ar ddeddfwriaeth a pholisi cynllunio ar gyfer ail gartrefi, a beirniadaeth o Asda am symud oddi ar eu hymrwymiad i gael 100% o'u cig o wledydd Prydain.

A meeting of the County Committee was held in mid-January, and there was a good turnout again on Zoom. The Union's Senior Policy Officer Dr Hazel Wright, (pictured above), gave a presentation on the TB eradication programme consultation paper and detailed the recommendations. There was considerable criticism of the content, as what was asked for involved far more pressure on farmers, more questions and guidelines, without the regional evidence to justify this. Hazel was thanked for her thorough and conscientious work on the subject. Among other issues were the concerns about the trade agreements with Australia and New Zealand, the latest consultation paper on planning legislation and policy for second homes, and the criticism of Asda for moving away from its commitment to source 100% of their meat from the UK.



Brecwastau

Yn dilyn ymgynghori manwl, yn anffodus bu raid gohirio ein brecwastau ym Meirionnydd ym mis Ionawr oherwydd Covid. Byddwn yn gwneud ein gorau i geisio ail-drefnu mis yma, os yw amgylchiadau yn caniatáu. Bydd gwybodaeth yn cael ei ddanfon maes o law.

Following thorough discussions, unfortunately our breakfasts in Meirionnydd had to be postponed in January due to Covid. We will do our very best to try to reschedule this month, if circumstances permit. Information will be sent in due course.



MONTGOMERYSHIRE

montgomeryshire@fuw.org.uk

01686 626889

Success for Montgomery YFC

MONTGOMERY YFC members put on their white coats for a full two days of competing at the Winter Fair, from stock judging competitions, decorating a Christmas tree to poultry boning and jointing.

It was great to see Montgomery YFC members having more success with the butcher's beef stock judging team gaining first place and Fflur Roberts, Llanfair Caereinion YFC winning the Prime Lamb Supreme Champion to only name a few.

Pictured, Fflur Roberts, Llanfair Caereinion YFC winning the Prime Lamb Supreme Champion.



PEMBROKESHIRE

pembrokeshire@fuw.org.uk

01437 762913

Come and be part of the discussion

Are you interested in helping to shape the future of agriculture in Pembrokeshire and across Wales? If so, why not join us at one of our monthly meetings.

During the next couple of years the Welsh Government will be developing and implementing new Regulations, such as the Agriculture Bill Wales, which will shape the future of agricultural support in Wales.

These proposals along with lots of other important issues including changes to TB policy, BVD legislation and trade deals will be discussed at our meetings over the coming months and we are really keen to hear the views of our members on these important issues.

If you would be interested in finding out how you can play a part in the discussions just contact the county office.



200+ Club Winners

December

£25 - Granville, Llwynpinner
£10 - Thomas, Llwyncelyn
Lan
£10 - Youngman, Llainfach

January

£25 - Morse, Ogmores
House
£10 - Chambers, Brynawel
£10 - Hartt, Longford

If you would like to be in with the chance of winning one of three monthly prizes and are not yet signed up to our 200+ Club, please contact the county office for information.

A new Welsh learning course for the agricultural sector

Cwrs blasu 10 awr wedi'i deilwra i'r sector Amaeth.

10 hour Welsh taster course tailored to the Agriculture sector.

dysgucymraeg.cymru

menter a busnes

Cymraeg Gwaith Work Welsh

YOUNG FARMERS CYMRU WALES

THE National Centre for Learning Welsh and Menter a Busnes have launched a new online Learn Welsh course for the agricultural sector.

The 10-hour short course, part of the Centre's 'Work Welsh' scheme, is tailor-made for the sector, and gives learners the freedom to follow the course in their own time and at their own pace.

The new partnership between the National Centre and Menter a Busnes stems from one of the recommendations of the 'Iaith y Priddi' report, conducted in 2020 by Farming Connect. The report considered how the Welsh-speaking agri-community could contribute to the goal of one million Welsh speakers by 2050.

While conducting research for the report, it became apparent there was a desire to learn Welsh among non-Welsh speaking farmers and workers in the supply and agricultural services sector who could see the practical benefits of being able to speak Welsh.

As a result, one of the recommendations was to 'create Welsh lessons with content built around agricultural themes' and the National Centre contacted Menter a Busnes to see if it would be possible to work together to respond to this recommendation.

Dona Lewis is the National Centre's Deputy Chief Executive, with responsibility for the 'Work Welsh' scheme. She said: "We are very pleased to be working in partnership with Menter a Busnes in response to one of the recommendations of the 'Iaith y Pridd' report.

"We know that the percentage of Welsh speakers in the agricultural sector is higher than the national average, which is 43% compared to 19%, and there is a desire to learn Welsh within the industry.

"By making it a flexible online course, learners can follow it at a time convenient to them."

Alun Jones, Chief Executive of Menter a Busnes added: "The agricultural sector is a stronghold of the Welsh language, and we

are seeing a growing interest among non-Welsh speakers in learning the language.

"Lois Evans, a member of staff at Menter a Busnes working on the Farming Connect programme, and a Learn Welsh tutor for adults, worked with the National Centre's experts to develop the course, which is wholly relevant to the agricultural community."

The Young Farmers is a prominent movement within the agricultural industry. 38% of the organisation's members are non-Welsh speakers.

Phil Elis, the organisation's new Chief Executive, is currently following a Learn Welsh course. He added: "This course will be of great benefit to those members who are looking for that initial encouragement to learn the language. The Welsh language is such an important part of the culture and heritage of rural Wales and it is great to see that there is an effort to increase the number of people who use the language."

This is not the first course that the Centre has developed for a specific audience, with courses available for other sectors such as health and care, public services, tourism and leisure and retail.

Dona Lewis added: "We want to ensure that our 10-hour online short courses offer useful vocabulary for the workplace. During the process of creating these courses, we work closely with the different sectors to ensure workers can learn basic vocabulary to hold a short conversation in Welsh, relevant to their area of work."

The Work Welsh 10-hour sector-specific courses, including agriculture, are available free of charge from the Learn Welsh website - www.learnwelsh.cymru/work-welsh/work-welsh-courses/work-welsh-taster-courses/

Mae'r erthygl yma yn Gymraeg ar wefan UAC - Newyddion - Newyddion Y Tir: "Cwrs Dysgu Cymraeg newydd ar gyfer y sector amaeth."

"Feeding the nation is what we do, and we do it well"

by Nathan Rogers

I'M a third generation Beef Farmer, located in Hayscastle, Pembrokeshire.

Being brought up in a farming family and having spent the school holidays helping out on my grandparent's farm, in the show ring with them and preparing and leading pedigree cattle when I was younger; it was from that young age that I knew I would enter the farming industry when I left school.

After leaving school I went on to do my national diploma in agriculture then on to achieving my HND in agriculture one day a week at Gelli Aur College in Carmarthenshire.

Only being in college one day a week gave me the chance to work the rest of the week and to gain the valuable skills you cannot learn in a classroom.

12 years ago I bought my first bulling heifer from my grandparents herd of pedigree Salers and I also bought a few heifers out of pedigree sales the same year, they were the foundation cows of my own pedigree Salers herd which I run alongside my parents herd.

At home here we also have a cold store and cutting up plant from where we butcher and sell our own beef. We attend the local farmers market and other local trade shows and fairs to sell and showcase our grass fed beef, in a variety of beef cuts and we sell cooked beef burgers. With the high marbling quality in Salers cattle and their ease of ability to finish off grass they are a great breed to use for butchery.

Over the last year we have been investing in the farm infrastructure, to continue the viability of our farming business for many years to come. We invested in a new slurry system and slurry tower, and covered feed yards. Cubicles along with mats have been installed for the suckler cows with the aim to finish putting cubicles in for the replacement heifers and store cattle this coming year.

With the investment of the slurry tower and the covered feed yards we have the capability to store slurry over the winter months and spread the slurry over the summer months where and when needed most, which will of course help us a lot in reducing our fertiliser bill.

With everything that's going on within the agricultural industry, from policy updates and increasing costs at the moment, I do hope that there will be a secure future for farming for many years to come as it is our job to feed the nation. A job that British farmers are more than capable of doing.

I do hope that the public will appreciate farming more, and appreciate how much time and effort goes into producing high standard of food - which we produce.



"I do hope that there will be a secure future for farming for many years to come."

British Wool re-launches exclusive training offer



BRITISH WOOL and the Wales Federation of Young Farmers Clubs (Wales YFC) have enjoyed a strong relationship and collaborated in many different areas over the years, including for the fourth year in 2022, with the YFC training offer.

As in previous years, British Wool's training offer is offering young farmers an opportunity to attend a beginner shearing course, enabling YFC members to work towards a Blue Seal award. The course will be over two days, covering all the essential aspects of achieving a successful shearing season, including health and safety, the use of shearing equipment and hands-on shearing practice to develop your technique.

This British Wool offer is open to YFC members who have

not previously attended a British Wool shearing course. The exclusive price YFC members will pay for this training offer is £87.50 (plus VAT) - the normal cost for this course would be £175 plus VAT.

Excellent fleece presentation starts at shearing but equally important is the work of the wool handler in ensuring the wool is presented correctly and to a high standard. British Wool is therefore extending its training offer to YFC members to also participate in its wool handling course. This one-day course will be delivered by a successful competitive wool handler at a discounted price for YFC members of only £50 plus VAT.

For more information or to register your interest please get in touch before the closing date of March 31:

Emma Jagger - 01274 688666 - shearing@britishwool.org.uk

Richard Schofield - 07966 291618.

More information can be found at www.britishwool.org.uk

MEAT MATTERS

Red Meat Programme aiming to make a difference on industry profitability and sustainability

by John Richards, Industry Development and Liaison Manager, HCC

IN 2022, HCC's Red Meat Development Programme enters the final eighteen months of the five-year initiative, with encouraging progress being made despite the Covid pandemic.

The EU-and Welsh Government-funded Programme aims to help the Welsh red meat sector to prepare for a future where we'll need to be competitive in a global marketplace, using the latest research and technology to pilot measures to help farmers and processors to be as efficient, profitable and sustainable as possible.

It consists of three individual projects, Stoc+, an animal health project, the Hill Ram Scheme, a project looking at sheep genetics within the hill sector, and the Welsh Lamb Meat Quality Project, exploring the effects of on-farm and processing factors on lamb eating quality.

By now, Stoc+ is working with over 360 beef and sheep farms and 42 vet practices across Wales to promote proactive flock and herd health management. Since the beginning of the project back in 2018 many farms have seen improved performance in areas such as flock and herd fertility, driven by the work undertaken between the farmer and vet.

The aim of the Hill Ram Scheme is to develop a critical mass of performance-recorded hill sheep in Wales and to date, a total of 54 farmers have joined the Scheme representing 7 breed-types across Wales. DNA technology has enabled these hill farmers to performance record their flocks and over 43,000 DNA samples of ewes, lambs and rams have been collected.

The Welsh Lamb Meat Quality Project has seen 960



consumers participate in consumer taste panels scoring Welsh Lamb's eating quality, contributing to an overall project sample base of around 2,000 consumers. Feedback is then analysed and will inform the sector on how to enhance the Welsh Lamb eating quality experience. As well as exploring consumers' preferences, the meat's nutritional content is also being analysed, showing that Welsh Lamb is extremely nutritious and contains high amounts of beneficial fats, minerals and amino acids.

Although Covid has meant delivering some aspects of the Programme in different ways, the scheme is on track to deliver its key aims.

HCC's Red Meat Development Programme is a 5-year programme which is funded by the Welsh Government Rural Communities - Rural Development Programme 2014-2020, which is funded by the European Agricultural Fund for Rural Development and the Welsh Government.

Yn 2022, mae Rhaglen Datblygu Cig Coch HCC yn cychwyn ar ddeunaw mis olaf y fenter pum mlynedd, gyda chynnydd calonogol yn cael ei wneud er gwaethaf y pandemig Covid. Nod y Rhaglen a ariennir gan yr UE a Llywodraeth Cymru yw helpu sector cig coch Cymru i baratoi ar gyfer dyfodol lle bydd angen inni fod yn gystadleuol mewn marchnad fyd-eang, gan ddefnyddio'r ymchwil a'r dechnoleg ddiweddaraf i dreialu mesurau i helpu ffermwyr a phroseswyr i wneud hynny mor effeithlon, proffidiol a chynaliadwy â phosibl.

PROPERTY MATTERS

Agricultural Holdings Act 1986 Notice to Quit - Case A

by Kathryn Williams, Director,
Davis Meade Property
Consultants



Notice to quit

WHERE an agricultural holding is let as a smallholding, by a smallholdings authority, on or after September 12 1984 and the tenant has reached the age of 65, there is provision for the smallholdings authority to serve a notice to quit upon the tenant to terminate the tenancy.

If the notice to quit will render the tenant homeless, the smallholdings authority must have found suitable alternative accommodation in readiness for when the notice is to take effect. There must also have been a clause within the tenancy agreement, signed by the tenant, that the tenancy is subject to the provisions of case A.

Case A as a mechanism for ending smallholdings tenancies, in the manner described above, arose following a debate in the House of Lords, where it was recognised that smallholdings were not readily available as starter units because few farmers were moving up the ladder and into larger farms in the private rented or owner occupied sector.

There is no equivalent power for Landlords other than smallholdings authorities or the Minister in pursuance of Part II of the Agriculture Act 1970 to serve a case A notice to quit.

There are in-depth requirements set out in part 2, paragraphs 1 to 7 of Schedule 3 of the Agricultural Holdings Act 1986 for determining whether suitable alternative accommodation has been provided or will be made available. The burden of proof in this matter lies with the Landlord.

A tenant in receipt of a notice to quit specifying case A, who wishes to challenge the notice, must within 1 month demand arbitration. This is the only method of challenge available to the tenant.

For further information and guidance please contact Kathryn Williams at Davis Meade Property Consultants - kathrynwilliams@dmpcuk.com

Pan fod daliad amaethyddol yn cael ei osod fel tyddyn, gan awdurdod, ar neu ar ôl Medi 12 1984 a bod y tenant wedi cyrraedd 65 oed, mae yna ddarpariaeth i'r awdurdod i gyflwyno hysbysiad ymadael i'r tenant i derfynu'r denantiaeth. Am ragor o wybodaeth cysylltwch â Kathryn Williams yn Davis Meade Property Consultants kathrynwilliams@dmpcuk.com

MERCHED MEWN AMAETH

Cael trefn ar weithgareddau'r flwyddyn

gan Tegwen Morris, Cyfarwyddwraig Cenedlaethol, Merched y Wawr

MAE cael trefn ar weithgareddau'r flwyddyn bob amser o bwysigrwydd, p'un ai ydych yn ffermio ac yn cynllunio ymlaen o ran pryd mae tymor wyna neu dymor y cynhaeaf ac wrth gwrs mae'r tywydd yn medru effeithio yn rhannol ar y gweithgareddau. Felly hefyd mae hi gyda Merched y Wawr - ceisio cael trefn ar yr holl ddigwyddiadau a threfnu lleoliadau a siaradwyr addas, ac wrth gwrs mae'r covid wedi amharu dipyn ar y trefniadau hyn dros y ddwy flynedd diwethaf.

Diolchwn fod technoleg wedi ein cynorthwyo a'n galluogi i barhau gydag amrywiaeth fawr o weithgareddau a digwyddiadau, ac edrychwn ymlaen at gyhoeddi rhifyn y Gwanwyn o'n cylchgrawn ar Fawrth 1af.

Erbyn hyn rydym yn paratoi i ddathlu Gŵyl Ddewi gan ofyn i bawb ystyried addurno eu ffenestri ac felly hefyd 100 mlynedd o fudiad yr Urdd - ymunwch yn yr hwyl - gallaf ddychmygu rhai ffermwyr yn creu Mr Urdd allan o fyrrau mawr!

Rydym fel cenedl yn parhau i gynnal amryw o weithgareddau diwylliannol megis Eisteddfodau a Sioeau Amaethyddol a braf ydyw medru paratoi unwaith eto i'w cynnal. Tybiaf y byddwn yn eu gwerthfawrogi yn fwy eleni nag erioed o'r blaen.

Mae rhanbarth Ceredigion wedi bod yn ffodus i dderbyn grant gan y loteri Genedlaethol i greu ffilm arbennig erbyn yr Eisteddfod yn olrhain hanes y diwydiant Gwlân yn y Sir - ac mae'r atgofion yn llifo yn barod ac edrychwn ymlaen yn fawr i gael gweld a dysgu llawer ar hyd y daith. Ein gobaith ydyw y bydd ieuencid y dyfodol hefyd yn gwerthfawrogi pwysigrwydd y diwydiant gwlân o ran cynhyrchu dillad, cynhesrwydd yn ein cartrefi ac yn ystyried defnydd pellach ohono i'r dyfodol.

Dymunaf Ddydd Gŵyl Dewi hapus i bob un ohonoch, ac edrychaf ymlaen at lansio ein gwefan newydd ar Fawrth 1af a chynnal amryw o weithgareddau difyr yn ystod y misoedd i ddod.

It's important to organise the year's activities, and Merched y Wawr are looking forward to various events throughout the year.



Lodi's *Gems* ...to die for!



LodiUK
Leading through innovation

Control rodent infestations on-farm,
with Lodi's Gems rodenticides...



UK'S STRONGEST RODENT POISON, KILLS IN A SINGLE FEED!

Over 5000
free beanie hats
to give away!



...and don't forget to claim your

Free Lodi's Gems Beanie Hat!

Simply follow the link below to claim your hat. *Completely free, including delivery!*

www.lodi-uk.com/beanie

or scan this
QR code now!



Use biocides safely. Always read the label and product information before use. Follow the CRRU code of practice for effective results and to reduce the risk to non-target animals and birds.
Can only be supplied to professional users holding certification demonstrating compliance with the CRRU UK Rodenticide Stewardship Regime. E&OE

Available from all Wynnstay stores

Alternative crop and pasture considerations

by Dr David Cutress, Farming Connect Knowledge Exchange Hub, IBERS, Aberystwyth University

WHILST traditional farming strategies have served us well in the past there is now a strong move away from intensive high productivity systems towards more sustainable regenerative alternatives. Within crop and pasture management alternative and diversified options can help to unlock new avenues of revenue production and go towards improving farm-level environmental impacts in a variety of ways.

Diversified crop options

Moving away from our staple crop options of wheat, barley, oats and potatoes can open new interesting alternatives. Crops such as soya are heavily reliant on imports from abroad but are now being looked at for selective breeding for varieties more applicable to the UK. Other niche options including cucurbits, like pumpkins, can offer high value, particularly when incorporated into lower labour pick your own schemes on farms. Also, high-value crops such as asparagus could net significant profits per hectare with or without organic statuses.

Old-growth new output

Much plant growth in the UK may well have hidden or underutilised alternative outputs which should be put to greater use. Whether these outputs are pharmaceuticals, niche foods or other supplements it may be time to make the most of the natural resources native to our surroundings.

Birch is a common tree species found across the UK in forestry and farmland systems. Its sap has high sugar content, higher than that of maple syrup, the products of which have a yearly value greater than \$500 million. If a fraction of this marketplace could be taken advantage of by birch syrup products, then this could be an interesting alternative use.

Equally, common flowers such as daffodils have been found to produce high amounts of galanthamine, a chemical known to have roles in Alzheimer's disease. This could be particularly beneficial if a market was created, as studies have shown the potential to combine livestock production on pastures inclusive of daffodils in the uplands. A variety of other native species or species which could thrive in the UK can also have pharmaceutical value in areas such as anti-cancer compounds.

Growing for the environment

Finally, utilising systems such as species-rich grasslands, herbal leys and constant cover crops could all go towards improving climate impacts, future sustainability and improving biodiversity (particularly when focusing on pollinator species knock-on roles in pollinating food crops). These strategies are likely to receive increasing rewards as future UK agricultural policies are solidified in the coming years.



Many of these ideas featured here are topics of investigation in the current EIP Wales projects. More information about these can be found on the Farming Connect website

Toyota Land Cruiser: New engine, re-fresh and up-grade

by Huw Thomas, Vice Chairman, Welsh Motoring Writers

TOYOTA'S original Land Cruiser reached its 50th Anniversary in 2000 and went on to a global total of 10m units in 2019. It is Toyota's longest-running vehicle line. The European Land Cruiser ('J15') is known elsewhere as the 'Prado'. In Spanish and some related languages it means "Meadow-land" - from the Latin "Pratum".

The larger ('J20') Land Cruiser is a much-evolved successor to the original. Briefly on sale in the UK and Ireland (1998-2000) as the 'Land Cruiser Amazon', it was a hugely accomplished 4x4 with an awesome 4.5-litre, V8-cylinder Diesel engine.

That, larger still 'Sequoia' and Hilux pick-up-based '4 Runner'/'Hilux Surf' don't come here. Main markets are North America, Russia and Middle East with a whole range of big V6/V8 petrol engines - having oil wells in the neighbourhood clearly useful.

The Land Cruiser as we know it was first introduced in 1984 as a "light duty" variant of the original 70 Series. Current (4th Generation - J15) model was introduced in 2013 and revised in 2020 for the 2021 model year. When a revised Hilux arrived at the end of last year with a new 2.8-litre Diesel engine, the Land Cruiser followed suit.

Construction is classic 4x4: body-on-frame (separate chassis); high/low ratio gearing via transfer box; front independent suspension but rear beam axle and semi-elliptic (leaf) springs. Centre and rear differential locks are fitted depending on model grade.

The new engine brings an extra 27bhp to take output to 201bhp. Torque too is up by 50Nm to a maximum 500Nm available from 1,600rpm. Engine stop-start and lower emissions has resulted in £325 off the first year Road Tax rate (passenger variants).

Commercial versions are either 'Utility' or 'Active'; passenger variants 'Active' or 'Invincible'. Commercials come in either 3-door short wheelbase guise or 5-door LWB. Top two passenger LWBs offer a 5+2 (7-seat) cabin.

Regrettably, only the 'Utility CVs have a manual gearbox. Autobox performance has improved but progress is 'leisurely' and being hustled through corners is not its forte. The auto's manual mode however does allow good point-to-point speed in traffic.



Toyota Land Cruiser.

Light, pin-sharp responses are exactly what's not needed off-road of course and the Land Cruiser's reputation here together with its reliability and durability is well known. Top of the range 'Invincible' brings 'Multi-Terrain Select', Torsen limited slip centre differential together with a rear diff lock. 'Crawl Control' and 'Adaptive Variable Suspension' (electronically air-modulated at the rear) extends its off-road armoury.

'Active' models gain smartphone connectivity (Apple CarPlay and Android Auto) via an 8" touchscreen but not the in-built SatNav of the 'Invincible'. Air conditioning, roof rails and heated power door mirrors are some further features.

'Invincible' adds 'Toyota Safety Sense' with a Pre-Collision System able to detect pedestrians and (in daylight) cyclists. Cabin spec includes auto climate control, heated, ventilated electric front seats, electric steering column adjustment a multi-view monitor and premium audio system.

Price Range: Commercial £35,925 - £41,225; Passenger £42,345 - £57,490.

Competition: SsangYong Rexton; Mitsubishi Shogun Sport (if any left in stock); Jeep Wrangler 4-door; Land Rover Discovery &/or New Defender 110.

Facts & Figures: LC Invincible; 2.8/4-cyl Turbo Diesel; 109 mph; 0-62mph 10.5-secs; 29.73mpg (WLTP) Official Combined; 30.1mpg on test; CO2 250g/km; Road Tax (£1,910 - 1st Yr included in purchase price) £155 thereafter; Ins Grp 38-39; Max Braked Trailer 3,000Kg; Wading Depth 900mm/35"; Warranty 5yrs/100,000 miles.

Conclusions: Legendary 4x4 for serious work in demanding conditions but its price takes it up against some capable 4x4s which are more "adept" on-road. The Toyota's appeal lies in its authenticity. Rexton closest in spirit and cheaper.

Supporting their Lifetime with **LIFELINE** lamb & ewe



Proven to increase colostrum quality by up to 25%*

- Ideal **where** twin lamb disease is a potential risk
 - Unique **patented** formulation
- Delivers energy **when** ewes' demands are high

Giving lambs a better start!

RUMENCO 

Freephone: 0800 833 675 | info@rumenco.co.uk | www.rumenco.co.uk



*25% increase in colostrum IgG