



llais ffermwyr Cymru

# Y TIR

the voice of Welsh farming

£2.50

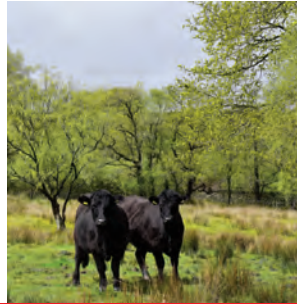
LETTING THE  
CAT OUT OF  
THE BAG

*The Secret Life of a Vet*



**Cipolwg prin  
mewn i fyd  
unigryw ac  
amrywiol y  
milfeddyg**

tudalen 6



**Sustainable  
Farming  
Scheme  
consultation  
summary**

pages 14, 15 &amp; 16



**RABI's Click  
& Chat  
service  
available  
24/7**

page 20

## Welsh Government urged to rethink SFS proposals through genuine co-design

AS farmers we know that no two days are ever the same, and the current climate within the industry is very similar. *Y Tir* goes to press a few days after the crucial meeting with Rural Affairs Minister, Lesley Griffiths in Cardiff.

During the meeting, we called for a rethink of the proposals through genuine co-design with both farming Unions. Speaking immediately after the meeting, FUW President Ian Rickman said: "As farmers, we understand the current strength of feeling and frustration of our members. We expressed these deep concerns and the resentment felt by our members and the wider rural community to the Minister in no uncertain terms today.

"We have called for an independent assessment to take place on the socio-economic impact and bureaucratic burden of Welsh Government agricultural policies, to include the SFS, bovine TB and the Control of Agricultural

Pollution 'NVZ' regulations.

"This time must also be used for a series of regular meetings involving the Minister for Rural Affairs and her officials with both farming Unions to rethink the proposals through genuine co-design. This needs to include an independent panel tasked with looking at alternatives to tree planting so we can work towards net zero in a more sustainable way," he said.

The FUW has long maintained that the SFS must be accessible for all active farming businesses, and provide long-term stability for such businesses and the wider rural economy that relies upon agriculture. It also needs to provide a meaningful income stream which properly rewards farmers by going beyond costs incurred and income foregone and underpins the importance of a high quality food supply chain in Wales.

"From what we can see, the SFS in its current form will not be sustainable and is clearly not ready, and the Minister repeated her assurances that it wouldn't be launched until it is.

"The continuation of the Basic Payment Scheme at current rates, until we are confident the SFS is ready, must therefore be considered. Otherwise we risk a repeat of the situation in England with basic payments disappearing and the vast majority of funding available only through the adoption of environmental schemes and actions.

"We welcome the constructive meeting with the Minister and her officials at such a critical time for the industry. However, the ball is now firmly in their court and we sincerely hope they take our requests seriously.

"You'll read again and again in this edition the importance of responding to the consultation. We won't apologise for this, we can rant and rave as much as we like at home or on social media, but we do need to convey these messages coherently to the Welsh Government so all the evidence is presented to them to show the strength of feeling.

"We cannot overstate how important it is for every individual and business that will be affected by these proposals to formally respond to the consultation.

"We welcome the constructive meeting with the Minister and her officials at such a critical time for the industry. However, the ball is now firmly in their court and we sincerely hope they take our requests seriously."

Remember that crucial closing date, Thursday 7th March 2024.

"It remains absolutely crucial that we all respond so we create the greatest impact possible on this fundamentally important scheme for the agricultural and rural economy, here in Wales," concluded Mr Rickman.



From left, FUW President Ian Rickman, Minister for Rural Affairs, Lesley Griffiths and NFU Cymru President Aled Jones.

*Yn ystod trafodaethau brys a gynhaliwyd ar Chwefror 19 gyda'r Gweinidog dros Faterion Gwledig, Lesley Griffiths, a'i swyddogion, galwodd Undeb Amaethwyr Cymru am ail ystyried y cynllun a chydunio'r gwaith o ddifrif.*

*Wrth siarad yn syth ar ôl y cyfarfod, dywedodd Llywydd UAC, Ian Rickman: "Fel ffermwyr, rydym yn deall cryfder y teimladau a rhwystredigaeth ein haelodau ar hyn o bryd. Mynegwyd y pryderon dwys a dyfnder y teimladau sydd gan ein haelodau a'r gymuned wledig ehangach wrth y Gweinidog heddiw. Rydym wedi galw am gynnal asesiad annibynnol ar effaith economaidd-gymdeithasol a baich biwrocraidaidd polisïau amaethyddol Llywodraeth Cymru, i gynnwys rheoliadau'r Cynllun Ffermio Cynaliadwy (SFS), TB mewn gwartheg a Rheoli Llygredd Amaethyddol o fewn yr NVZ.*

*"Rydym yn croesawu'r cyfarfod adeiladol gyda'r Gweinidog a'i swyddogion ar adeg sy'n dyngedfennol bwysig i'r diwydiant. Fodd bynnag, mae'r cam nesaf bellach yn eu dwylo nhw ac rydym yn mawr obeithio y byddant yn cymryd ein sylwadau o ddifrif. Unwaith eto, ni allaf or bwysleisio pa mor bwysig yw hi i bob unigolyn a busnes y bydd y cynllun hwn yn effeithio arnynt ymateb yn ffurfiol i'r ymgynghoriad erbyn 7 Mawrth," ychwanegodd Ian Rickman.*

**Shearwell  
Data**

**Livestock Systems**

Your local reps

Dani - North Wales  
07494 499096

Catrin - South Wales  
07837 988977



**FREE**  
Replacement  
Cattle & Sheep Tags  
For life - Even when sold

T&Cs apply - see website for details



Browse our full tag range online

Whether you are looking for visual or EID tags, Shearwell Data has them all!

Call 01643 841 611 Visit [www.shearwell.co.uk](http://www.shearwell.co.uk)

## FUW UPDATE

# Protests and frustrations dominate the news

by Guto Bebb, Group Chief Executive

SUDDENLY farmers and other businesses in rural communities have realised that they are facing a crisis. This has been made worse by a loss of confidence in the willingness of the Welsh Government (WG) to accept the need to significantly change their latest version of the Sustainable Farming Scheme (SFS). The FUW accept that we have seen some welcome changes made to the SFS compared to the initial plans for post Brexit farming support back in 2018 but there remains a huge gap between what WG is now proposing and what we as an industry believe is possible and economically viable.

There might be more confidence in the idea of the WG taking this consultation seriously if there was some evidence that the Government was adept at listening to the concerns of farmers. However, the debacle of TB policy in Wales and the bizarre decision to make Wales a single entity for the purpose of water quality regulations, has damaged confidence in the ability of WG to listen to farmers.

This is a dangerous place to be for both WG and the farming sector. There is a desperate need for some indication of goodwill towards the sector from WG and it needs to be seen soon if we are to deal with the elephant in the room - namely the issue of funding and attitudes towards farming that we have seen at Westminster since Brexit.

Supporting farmers and subsidising sustainable food supplies are concepts that have been despised by the UK Treasury for generations. CAP funding and financial support to UK farming through a return of some of the money paid to EU coffers was tolerated by the UK Treasury, not because they agreed with it but because it was seen as a direct return on our 'membership fee.' That is no longer the case.

Within months of the Brexit vote the UK Government, under then DEFRA Minister Andrea Leadsom, was devising the concept of 'public money for public goods' and this lead was quickly followed by the WG with their ill-advised 'Brexit and Our Land' concept. Today, six years later, much of the SFS proposals attempt to replicate what is being done in England rather than follow the approach being taken in Scotland. The Scottish model reflects the view of the Scottish Government that what works in England will not work in Scotland not least because 85% of Scottish farmland is deemed less favourable compared to 17% in England. The figure in Wales is 80% but no such common sense from WG.

We have also seen Treasury orthodoxy highlighted by the trade deals signed by

Government since Brexit, not least the access to UK markets offered to Australia and New Zealand and the dual standards of the agreement with the EU that has seen Brexit barriers to trade imposed on Welsh agricultural exports whilst no such controls were imposed on imports from the EU. These policies reflect a strong and persistent view within UK Treasury that does not accept the need for the UK to be a significant food producer.

However, the real issue we face now is post Brexit funding for agriculture. We know that the promise to match EU funds in Wales for the five years from 2019 was not delivered due to Treasury accountancy tricks and the FUW supported the WG in highlighting this point. Now it is time for the WG to understand the point of their existence. We elect a devolved Parliament in Wales so that we can do things differently when the evidence shows that a Welsh approach is needed. The agricultural sector is one such area where we need a distinct Welsh policy.

We need the WG to fight on our behalf to ensure that we get from the UK Treasury what we need to manage a distinct and farm friendly agricultural policy in Wales. That is the whole point of devolution - standing-up for the people you represent. Currently we are being offered re-hashed DEFRA and UK Treasury dogma presented under the guise of a devolved policy. WG should be arguing with us for a proper post Brexit settlement for Welsh farming rather than delivering austerity for our farming sector and giving the UK Government a free pass on the promises that they made to sustain farm funding at pre-Brexit levels.

*Yr argyfwng sy'n wynebu ffermwyr Cymru sy'n cael sylw ein Prif Weithredwr Guto Bebb mis yma. Mae'r frwydr i sicrhau bod Llywodraeth Cymru'n brwydro ar ein rhan a bod yna gytundeb priodol ar ôl Brexit ar gyfer ffermio yng Nghymru yn parhau.*



## Scottish farm support underlines naivety of Welsh plans



THE FUW says that the Scottish Government's confirmation that direct farm support will continue in Scotland highlights the fundamental flaws inherent in Wales' Sustainable Farming Scheme (SFS) proposals.

Scottish First Minister Humza Yousaf told NFU Scotland's spring conference on Friday February 9 that 70% of future support will constitute direct farm payments to support food producers. The remaining 30% will be targeted at environmental measures, a ratio similar to current Scottish arrangements.

"By comparison, the Welsh Government's proposed SFS, due to be introduced next year, would bring direct farm payments to an end completely while introducing a mountain of costly restrictions and requirements," said FUW President, Ian Rickman.

"This would mean Welsh farmers competing at a huge disadvantage compared to our counterparts in Scotland, despite both our countries having a similar proportion of disadvantaged land where only livestock farming is possible."

Around 85% of Scotland is classified as Less Favoured, while the proportion in Wales is 80%. In England it is just 17%.

Mr Yousaf also confirmed that a form of Less Favoured Areas support, which was abandoned in Wales in 2013, would continue in Scotland.

"The Welsh Government's economic analysis published alongside their SFS consultation paper suggests all the rules and restrictions would lead to an 11% reduction in livestock numbers. It would also see a fall in average Welsh farm incomes of between 25 and 35 per cent. This figure would rise to between 48% and 85% in the absence of possible 'top-up' payments," said Mr Rickman.

"Now that we have left the EU, the UK effectively has its own single market but without the common payment rules. If Wales diverges from Scotland in the way proposed by the Welsh Government, we would not only be disadvantaging our own farmers by introducing a mountain of rules not present for EU producers, but would also be placing our own industry at a huge competitive disadvantage compared to Scotland and handing business to the Scots on a plate," said Mr Rickman.

The FUW was a principled opponent of Brexit and after the vote to leave in 2016, argued for a robust replacement for the Common Agricultural Policy that minimised such unfair competition between UK nations. This was apparent in our comprehensive Filling the Void paper published in July 2018.

"This very sensible and economically advantageous move by the Scottish Government needs to be reflected by the Welsh Government when it considers the vast number of improvements that must be made to its current SFS proposals. What is proposed at present is destructive and economically naive, and would be a massive own goal for Wales' farms, society, culture and economy.

"As we predicted, Brexit has failed Welsh farmers on many levels and the Welsh Government's plans would merely add to the challenges we have faced since 2016," he added.

### Cysylltwch â ni / Get in touch

Golygydd/Editor: Nia Davies-Jones - [ytir@fuw.org.uk](mailto:ytir@fuw.org.uk)

Pennaeth Cyfathrebu/Head of Communications: Ffion Clwyd - [ffion.clwyd@fuw.org.uk](mailto:ffion.clwyd@fuw.org.uk)

Pennaeth Marchnata/Head of Marketing: Meryl Roberts - [meryl.roberts@fuw.org.uk](mailto:meryl.roberts@fuw.org.uk)

Cydlynnydd Marchnata/Marketing Coordinator: Will Beynon - [beynon.will@fuw.org.uk](mailto:beynon.will@fuw.org.uk)

Swyddog Cyfathrebu'r Iaith Gymraeg/Welsh Language Communications Officer:  
Angharad Evans - [angharad.evans@fuw.org.uk](mailto:angharad.evans@fuw.org.uk)

[www.fuw.org.uk](http://www.fuw.org.uk)



# “Fighting hard on your behalf”

by Ian Rickman, FUW President

IT'S been an extremely busy start to 2024. This was always going to be a pivotal year for Welsh agriculture with the Sustainable Farming Scheme due to launch in 2025. We have been consulting with members on the development of the Welsh Government's Sustainable Farming Scheme (SFS) since 2018, and whilst the proposals have improved significantly compared to the initial draft published back in 2018, there is clearly a vast ocean of change that needs to be addressed before this scheme sees light of day.

We're all juggling a lot of farm activity in wet and murky conditions at this time of the year. Cattle need feeding and mucking out; many of us are preparing for a busy lambing season. At the best of times, it is a tiring and trying period farming during dark winter months. But just as spring is around the corner, I firmly believe that there will be light at the end of this dark tunnel.

As I write, we've just concluded our FUW SFS meetings the length and breadth of Wales to outline the Welsh Government proposals in the consultation to our members. I'd like to sincerely thank Dr Hazel Wright and Gareth Parry in the policy team as well as the local Union staff for facilitating all 12 meetings in just over three weeks.

I was able to reach many of those meetings and see first hand how frustrated our members are as well as the dismay and anger they felt at the potential damaging effects these SFS proposals could have on the future of farming. Everything our members expressed in the meetings will shape the FUW response to the SFS consultation.

We know how much the Welsh Government likes their consultations but it's vital that everyone responds to the SFS consultation. We have dedicated the front page of the FUW website to help you send your response or feel free to call into any of our offices to ask for help to submit a response.

Elin Jenkins from our policy team has sent a letter to as many businesses as possible, specifically those that rely on farmers or are supported by the agricultural industry, encouraging them to

submit their own response to the SFS consultation. The list stands at 350 businesses currently, but we know there are many more. Please consider asking businesses in your area to send a response to the SFS consultation.

The frustration and anger across our industry was also given a voice in the farmer meetings in Welshpool and Carmarthen, with over 4,500 farmers and rural businesses making the effort to come together to express their frustrations not only about the proposed Sustainable Farming Scheme but the dysfunctional bovine TB policy and NVZ regulations.

The FUW, has in the past warned the Welsh Government not to 'awaken the sleeping Welsh Dragon'. That dragon is well and truly awake now and surely can't be ignored.

The FUW will continue to listen to, and support our members as the year unfolds. We will continue to lobby politicians of all parties to hammer home the message that the industry has had enough.

The industry needs to pull together to achieve the change that we want and urgently need, "there's strength in unity" as one of the speakers in the Carmarthen meeting said. Now is the time to unite and work together rather than pursue individual goals.

I make no apologies for returning to the words of Dafydd Iwan; "Er gwaethaf pawb a phopeth, ry'n ni yma o hyd," "Despite everyone and everything we're still here," fighting hard on your behalf.

**Mae'r golofn yma yn Gymraeg ar wefan UAC - Newyddion - Newyddion Y Tir: "Brwydro'n galed ar eich rhan," neu o'ch swyddfa sirol leol.**

**We will continue to lobby politicians of all parties to hammer home the message that the industry has had enough**

## Hazel moves on

AFTER 15 years of service Dr Hazel Wright, (pictured right), is leaving her position as Acting Head of Policy for the FUW.



During her time with the Union she has provided leadership and guidance on numerous agricultural policy related matters.

Former FUW Head of Policy, Dr Nick Fenwick said: "Despite having grown up in a wholly urban environment in Port Glasgow, it was clear from the first day of Hazel's employment with the Union that she was passionate about serving Welsh farmers and rural communities.

"Fifteen years later, that passion has only grown, and Hazel has become a widely respected expert in farm animal health, well known not only in Wales but across the UK.

"The Union wishes Hazel all the very best in her new role with the Wales Veterinary Science Centre."

Guto Bebb, FUW Group Chief Executive said: "Hazel has been a fantastic servant to the FUW, our members and the wider Welsh farming community. Her knowledge and expertise is understood and appreciated by everyone who has worked with her and she will be a great loss to the FUW but we take comfort from the fact that in her new role she will continue to be a key player in the field of Animal Health here in Wales."



JOHN DEERE



KRAMER

PÖTTINGER

Teagle



Used Machinery Hotline:

**01386 258001**



**JOHN DEERE 7750**

2009, 3,792 HRS. 40K PRODRIVE, 40 KNIFE DRUM, 4WD, 8.5T REAR AXLE, ADDITIONAL LIGHTING, HEAVY DUTY GRASS KNIFE, WEIGHT CARRIER, C/W 630C GRASS PICKUP.

**£65,000**



**JOHN DEERE 7350**

2011, 3,513 HRS. 30K IVT, 3 SPEED, 40 KNIFE CUTTERHEAD, HD STRAIGHT GRASS KNIVES, 2 SPEED SPOUT ROTATION & AIR SEAT.

**£39,950**



**JOHN DEERE 7450**

2008, 4,033 HRS. 40K PRODRIVE, 40 KNIFE DRUM, AUTO LUBE, AIR SEAT, 650R32 480R32, WEIGHTS, C/W 630 HDR.

**£50,000**



**JOHN DEERE 854**

2017, 2M ROTOFLOW PICKUP, NET ONLY, 19/45-17 TYRES, 540RPM PTO, COMPRESSOR SHIELD, SOFT CORE, UPPER ROLL DRIVE.

**£14,950**



**JOHN DEERE 331**

2016, 4,100 hrs, 3.1M WORKING WIDTH, 1000RPM PTO, 100 HP MIN, BOLTED KNIFE CHANGE, 8 DISCS

**£9,500**



**JOHN DEERE 388**

2014, TRIPLE MOWER SET, 8.8M WORKING WIDTH REAR BUTTERFLY C/W WIDE SPREAD KIT, 3.1M WORKING WIDTH FRONT MOWER C/W QUICK CHANGE BLADES, BOTH HAVE STEEL CONDITIONER TINES, 1000RPM PTO.

**£22,500**

All prices exclude VAT

**VIEW OUR RANGE OF NEW & USED MACHINERY AT TALLISAMOS.CO.UK**

# Changes to Union membership fees

by Simon Longworth, FUW Ltd Group Finance Director

THERE will be a few changes in membership fees for the Union this spring. From the 1st April, all memberships will become subject to VAT at the Standard Rate of VAT. A VAT project has been conducted with our tax advisors, Bevan Buckland LLP, since October 2023 and this included a review of the VAT treatment of future membership subscriptions.

The result was that FUW Ltd is now regarded as making a single supply of professional services to its members. As such, a Standard Rated Output VAT will be applied to all membership invoices from 1st April 2024. This applies to all membership categories of the Farmers' Union of Wales: Full, Countryside, Farmers for Life and Academi.

The Grand Council agreed in 2022 that to keep services strong and accessible to all members, and to improve the quality of business planning, adjusting fees annually in line with inflation would be necessary. While inflation had fallen in the autumn of 2022, the Spring Budget of 2023 warned of potential inflation of 10%. World events and their impact on the UK economy have had a very negative impact in UK inflation which is only now starting to ease. As a result, the FUW Group, as with most of our members, have witnessed very significant increases in the cost of goods and services over the past 18 months, often well in excess of 10%. So how was inflation to be assessed for setting 2024/5 membership fees?

**"We believe that the membership fee offers excellent value for money. The FUW team will continue to be there to support you and lobby on behalf of Welsh Agriculture as a result of this change."**

There are several ways of assessing inflation in the UK such as the Retail Prices Index (RPI) and the Consumer Prices Index (CPI). Every month, the Office for National Statistics (ONS) assesses the RPI in the UK as the movement in price of a selection of goods and services in a fixed, virtual "shopping basket". This shopping basket includes mortgage interest payments so is influenced by property prices and interest rates.

The ONS also assesses the CPI as the movement in the average price of the virtual shopping basket, and mortgage interest is not included. As a

result, CPI often tracks lower than RPI. For the FUW Group the RPI is the closer match to the inflation experienced in our cost base which includes interest costs, staff salary expectations which are influenced by interest costs and many on-going contracts which we have which track the RPI.

When the Grand Council adopted the Group Business Plan it was agreed that an annual membership fee adjustment would take place from the 1st April each year and would use the RPI of the previous September to allow for the appropriateness of the proposed increase to be discussed in the December Grand Council.

In December 2023, the Grand Council approved the use of the September RPI of 8.9% to be applied to all membership fees from 1st April 2024. This means that the average farm membership fee of £260 will become £283, a monthly increase of slightly less than £2 for the average member. This change is necessary for the ability of the FUW Group to confidently continue to plan and deliver our range of services to members and to begin the work of preparing for the changes to farming which are, as our members know only too well, on the horizon.

The Directors and Officers of the Union appreciate that this is another cost increase that you will face as a farm business but we also believe that the membership fee offers excellent value for money and that the FUW team will continue to be there to support you and lobby on behalf of Welsh Agriculture as a result of this change.

If you have any questions about membership services or charges, please visit our website [www.fuw.org.uk](http://www.fuw.org.uk) or speak to your county team.



## Letter to the Editor

Is this a crisis point in Welsh farming?

Dear Editor

I expect the Welsh Government will blame environmentalists and conservationists for the very adverse reaction farmers have had to the current consultation on the Sustainable Farming Scheme. This would be incorrect. They don't like it either. As a conservationist I don't like it at all.

Environmentalists and conservationists strongly support 'public money for public goods' and paying people just for owning land is not acceptable. Paying people for producing food and looking after the countryside is highly desirable. Ensuring that schemes like Glastir continue to support environmentally friendly farmers with seamless transition to SFS and higher payments is what we want. The temporary Habitat Scheme reduced payments. That sends entirely the wrong message.

Net farm income for most farms in Wales is lower than their Basic Payment Scheme cheque's. BPS will be gone by 2029. That means lots of farmers are either going to try to produce more on the same land or give up entirely. We don't want either.

SFS is over complicated and with so many obligations, probably for so little money, it is frankly insulting to farmers. Consultation without figures is not consultation. Most of the 17 universal actions have some merit individually but collectively they are a big ask of busy people.

Most, like winter cover crops, should be voluntary add ons with sensible payment rates that more than meet the cost of growing them. The basic scheme should be something almost all farmers can sign up to but including the sensible management of existing habitat. The required 10% habitat and 10% tree

cover will exclude many farmers and be a subject of endless disputes and there is almost no recognition that farmers actually produce food.

Though we should all be in favour of limiting climate change, making farmers collect soil samples for carbon content analysis, is using the agricultural budget to facilitate the move to Net Zero CO2 emissions. It should have additional funding. For these samples to have any meaning they need to be collected by independent contractors adhering to a strict methodology otherwise they are a complete waste of time.

We all want Wales to have more trees but requiring all farmers to have 10% tree is not actually sensible. We need forests with a purpose, with roads to extract timber, areas of native hardwoods for wildlife and dog walkers and a major contribution to creating them from greenwashing carbon offsets from airlines etc.

I thought the meeting of farmers in the Welshpool market on February 1st was exceptional. I spoke as a conservationist and was rather rude in my condemnation of SFS. As it is nearly 8 years since the 2016 referendum when we decided we were leaving the EU you would have thought they could come up with something better as well as sooner.

What is needed is conservationists and farmers to talk together and agree a strategy that works for both.

Yours

Simon Spencer (Dr)

FUW member and consultant entomologist



## POULTRY AND LIVESTOCK HEATERS

# POULTRY

## HEATERS LTD



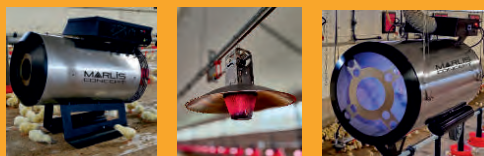
### ZEPHYR 73

 ENERGY SAVING

 HIGH THERMAL EFFICIENCY

 ELECTRONIC MANAGEMENT

 EASY TO INSTALL AND MANAGE



MEET US: STAND #12-102

[www.poultryheaters.co.uk](http://www.poultryheaters.co.uk)

+44 (0)7787 136506

RESEARCH  
PROVEN



# GET READY FOR A SUCCESSFUL TURNOUT!

CHOOSE CRYSTALYX THIS  
GRAZING SEASON.



HIGH MAGNESIUM  
TO BALANCE  
SPRING GRASS

IMPROVES FORAGE  
INTAKE AND DIGESTION  
FOR ENHANCED  
PERFORMANCE



REDUCES THE  
RISK OF FLY  
AND MIDGE  
BITES

Find your nearest stockist at [crystalix-global.com](http://crystalix-global.com)  
+44 016973 32592 | [info@crystalix-global.com](mailto:info@crystalix-global.com)



Crystalyx UK

### Free Sales Service for FUW Members

If you have anything to sell - big or small - fill in the coupon and for a FREE ADVERTISEMENT send it to:

Y Tir, Plas Gogerddan, Aberystwyth, SY23 3BT or email it to: ytir@fuw.org.uk

Entries must be confined to 25 words and be received by: **March 25 2024**

FOR SALE	WANTED	LIVESTOCK FOR SALE
HOLIDAYS	FARMS FOR SALE	MISCELLANEOUS
Name .....		
Address .....		
Telephone number .....		
<b>PLEASE NOTE: FREE ADVERTISEMENTS ARE FOR FUW MEMBERS ONLY AND NOT FOR COMMERCIAL TRADERS</b>		
Membership number: .....		

### AR WERTH / FOR SALE

**WORKING SHEEPDOG BITCH;** friendly and rides on bike. Pembrokeshire area. Tel: 07816 125022.

**FODDER BEET;** cleaned. Delivered all areas. Tel: 07802 680687 / 01691 777785.

### YN EISIAU / WANTED

**VINTAGE TRACTOR;** don't mind condition, wanted for a winter project. Tel: 07365 818314.

**AI FLASK;** needed to hold straws and nitrogen. Tel: 01248 431240.

### GWYLIAU / HOLIDAYS

**CROESO CYNNES CYMREIG;** mewn Gwely a Brechwast yn Ffermdy Llwyn Mafon Isaf yn ardal Criccieth Eryri. Hefyd 3 Pod Glampio moethus ar y fferm. www.llwynmafonisaf.co.uk - Cysylltwch â Ffôn: 01766 530618 / 07503 192994.

## Concerns over proposed new school year structure

FOLLOWING consultation with its membership, the FUW has submitted its response to the Welsh Government's consultation on 'The Structure of the School Year', highlighting several concerns with regards to the proposals to move term dates and the impact this would have on the rural economy, social and cultural events in rural Wales.

FUW Younger Voice for Farming Committee Chair, Gemma Haines, said: "The FUW understands the sentiment behind the Welsh Government's proposals, however, we are asking the Welsh Government to reconsider the proposed dates in such a way that the popularity of major cultural events such as the Royal Welsh Agricultural Show are not sacrificed."

Proposals within the consultation suggested to lengthen the summer term by a week in July would result in an overlap of the school term with the long standing and prestigious Royal Welsh Agricultural Show. The Royal Welsh Agricultural Show is internationally recognised and referred to as the shop window for Welsh agriculture with 200,000 annual visitors.

The agricultural sector in Wales is also a stronghold for the Welsh language with 43% of workers being Welsh-speakers.

"Any changes to school term dates that deter the younger generation from attending the largest celebration of Welsh agriculture would be damaging to the Welsh language and our culture," she said.



### CORNEL CLECS

# Bywyd milfeddyg - cipolwg prin tu ôl i'r llenni

gan Angharad Evans, Swyddog Cyfathrebu'r Iaith Gymraeg

"AR ôl tyfu i fyny rwyf am fod yn...fet" yw breuddwyd fawr nifer o blant bach, ac i'r rhai hynny sy'n mynd ymlaen i wireddu'r freuddwyd honno, mae yna yrfa ddiddorol ac amrywiol o'u blaenau. Er ein bod yn deall beth yw gwaith milfeddyg, ydyn ni'n llwyr sylweddoli yn union beth sy'n digwydd o ddydd i ddydd?

Bydd y llyfr *Letting the Cat Out of the Bag: The Secret Life of a Vet* yn sicr o gynnig cipolwg difyr i ni o beth yn union sy'n wynebu milfeddygon yn ddyddiol. Awdur y llyfr yw'r milfeddyg Siôn Rowlands, (**ar y dde**), sydd â gyrfa'n ymestyn dros 25 mlynedd.

Cyn sôn am y llyfr a'i gynnwys, dewch i ni ddo i adnabod Siôn yn well: "Cefais fy ngeni yng Nghaerdydd ganol y 70au cyn symud i brydferthwch Dyffryn Tywi yn yr 80au cynnar. Wedi fy amgylchynu gan dir amaethyddol mwyaf ffrwythlon Prydain Fawr, dechreuais ymgolli yn fy myd gwledig newydd a chafodd effaith ar bron popeth a wnes i. O gymharu â llawer, nid oedd yn daith draddodiadol, yn y ffaith ni ddangosais ddiddordeb mewn bod yn filfeddyg na gwneud cais i ysgolion milfeddygol. Trwy hap a damwain llwyr yn fy arddedau hwyr, cwrddais â ffrind fy nhad a oedd yn filfeddyg gwledig adnabyddus yn Llandeilo, ac ar ôl treulio wythnos yn ei gwmini, roeddwn ar y trywydd cywir.

"Ar ôl 5 mlynedd wych yn ysgol filfeddygol Lerpwl, dychwelais i Gymru i bractis anifeiliaid cymysg mawr, cyn mynd i Awstralia i adeiladu fy sgiliau a hyder. Dychwelais i Gymru yn y '00au cynnar, a dros yr 20 mlynedd neu fwy wedi hynny, hyd heddiw, mae fy ngyrfa wedi bod yn amrywiol.

"Fe wnes i barhau â rhywfaint o waith cymysg cyn ymuno â'r llywodraeth, fel milfeddyg, lle mae gwaith yn parhau i roi boddhad hyd heddiw. Rwyf hefyd wedi bod yn berchen ar bractis anifeiliaid bach ac yn dal i wneud ambell ddiwrnod yn fy hen bractis hyd heddiw."

Ond o le daeth y syniad am lyfr?

"Cadwais gofnod o lawer o brofiadau cynnar yn fy mywyd a'm gyrfa, gan feddwl ar y pryd eu bod yn rhan annatod o yrfa unrhyw filfeddyg ifanc, ond nid yw hynny'n wir. Rwyf wedi rhannu llawer o'r straeon, dro ar ôl tro gyda ffrindiau a theulu gyda'r awgrym y dylwn roi pin ar bapur er mwyn sicrhau nad ydynt yn cael eu hanghofio.

"Rhoddodd Covid a'r cyfyngiadau a ddaeth yn ei sgil, gyfle i lawer, gan gynnwys fi, i gychwyn ar ein nofelau cyntaf o'r diwedd. Heb unrhyw syniad go iawn o sut a ble i ddechrau, ar ôl drafftio ychydig o benodau, anfonais fy ymgais i gannoedd o gyhoeddwy ac asiantau.

"Mae'n rhannu hanesion uniongyrchol am

gyfnodau cynnar fy ngyrfa, yn enwedig delio ag anifeiliaid a'u perchnogion. Roedd rhai profiadau'n deillio o'm naifrwydd, llawer ohonynt yn aml yn deillio o'r ffaith bod perchnogion yn rhy awyddus a phob ohonynt yn seiliedig ar ymdrech i roi lles anifeiliaid yn gyntaf.

"Pe bawn i'n gyfrifol am farchnata - diolch byth nad ydw i, mae'n debyg y byddwn i'n defnyddio'r dyfyniad eithaf hir yma, sef adborth a gefais gan rywun a ddarllenodd fy llyfr yn ddiweddar: 'Cymaint oedd fy amrywiaeth o emosiynau, daeth aelod o staff y gwesty i ochr y pwll a gofyn a

oeddwn yn iawn. Yn ddiarwybod i mi, dros yr hanner awr ddiwethaf, roeddwn i wedi cael fy ngweld yn chwethin yn uchel, ac yna'n crio'.

"Rwy'n parhau i gael fy syfrdanu gan sylwadau cadarnhaol gan bobl sydd wedi darllen a mwynhau fy llyfr, mae'n sicr wedi gwneud i mi feddwl am ysgrifennu un arall. Mae gen i rai syniadau yn corddi a byddwn i wrth fy modd yn eu harchwilio."

Gallaf ategu union eiriau'r person wrth ymyl pwll nofio'r gwesty - os am lyfr fydd yn chwarae ar bob emosiwn, dyma'r llyfr i chi!

Diolch Siôn am gofnodi anturiaethau milfeddyg - y da a'r drwg ac am roi cipolwg prin y tu ôl i'r llenni ar fyd unigryw ac amrywiol y milfeddyg.

*Letting the Cat Out of the Bag: The Secret Life of a Vet* by Siôn Rowlands is published by Two Roads and is available to buy here: <http://tinyurl.com/42xrdrk> (URL has been shortened).

## LETTING THE CAT OUT OF THE BAG

*The Secret Life of a Vet*



SIÔN ROWLANDS

This article is in English on the FUW website - News - Y Tir News: "Life of a vet - a rare behind the scenes glimpse," or from your local county office

# Ymwadiad SAF disclaimer 2024



Fel rhan o'ch pecyn aelodaeth o'r Undeb, rydym ar gael i'ch cynorthwyo i gwblhau eich Ffurflen Cais Sengl (SAF) 2024. Er mwyn i ni fedru cyflwyno eich cais bydd angen i chi ddarllen a chytuno i'r ymwadiad isod. Os ydych chi am gwblhau eich ffurflen dros y ffôn, a bod hynny yn bosib, ac nid oes gennych e-bost, yna gallwch arwyddo gwaelod yr ymwadiad yma a'i ddychwelyd drwy'r post i'ch swyddfa sir UAC cyn eich apwyntiad.

*As a part of your membership package of the Union we offer assistance with your Single Application Form (SAF) 2024. In order to submit your claim we will need you to read and agree to the disclaimer below. If you would like to complete your form over the phone, and if that is possible, and you haven't got an email, you can sign the bottom of this disclaimer and post it to your FUW County Office before your appointment.*

## Ffurflen ymwadiad SAF 2024 (dros y ffôn)

Rydw i/Rydym ni.....(Enw/au)

O.....

.....(Cyfeiriad)

### Drwy hyn yn cadarnhau ac yn datgan bod:

- Undeb Amaethwyr Cymru (UAC) wedi esbonio i fi/ni na fydd yn derbyn unrhyw gyfrifoldeb o ran ei hun neu unrhyw aelodau o'i staff (drwy'r gyflogaeth) boed mewn cytundeb, camwedd (gan gynnwys esgeulustod) neu fel arall mewn cysylltiad â'r broses o gwblhau fy/ein Ffurflen Cais Sengl.
- Deallaf/wn mai fy nghyfrifoldeb i/ein cyfrifoldeb ni yw darparu gwybodaeth lawn a chywir yn ôl y gofyn er mwyn cwblhau'r ffurflenni sydd o dan sylw, ac ni fydd UAC yn derbyn unrhyw gyfrifoldeb am wybodaeth anghywir a roddir.
- Deallaf/wn mae ein cyfrifoldeb i/ni yw sicrhau fy/ein bod yn cydymffurfio gyda safonau cydymffurfio fel sydd wedi eu nodi yn yr 13 o ofynion rheoli statudol (SMR) a'r 7 Cyflwr Amaethyddol ac Amgylcheddol Da (GAEC) sy'n cynnwys rheolau megis cadw record stoc, cwblhau gweithlyfr rheoli llygredd amaethyddol (NVZ) a safonau lles anifeiliaid.
- Deallaf/wn bod UAC yn gallu cynorthwyo gyda chwblhau a chyflwyno'r ffurflenni.
- Fy nghyfrifoldeb i/ein cyfrifoldeb ni yw edrych dros y ffurflenni wedi'u cwblhau er cywirdeb ar ôl i'r ffurflen gael ei chyflwyno ar-lein i Lywodraeth Cymru.
- Unwaith mae'r ffurflen wedi ei chwblhau a'i chyflwyno rydw i/rydym ni yn cadarnhau fy mod/ein bod yn ymwybodol bod cyfnod o 30 diwrnod (yn cychwyn o'r dyddiad cau i gyflwyno'r ffurflen) lle gellir gwirio am unrhyw gamgymeriadau amlwg. Rydw i/rydym ni yn cytuno i wirio'r ffurflen sydd wedi ei chyflwyno o fewn yr amser perthnasol ac y byddaf i/byddwn ni yn hysbysu UAC am unrhyw gamgymeriadau yn y wybodaeth ar y ffurflen a gyflwynwyd, neu os oes unrhyw wybodaeth wedi ei hepgor o'r ffurflen a gyflwynwyd.
- Mae'n ddyletswydd arnaf i/arnom ni i fonitro a sicrhau fy mod/ein bod yn derbyn llythyr/e-bost o gydnabyddiaeth SAF yn cynnwys manylion y caeau a chynlluniau sydd i'w hawlio gan Lywodraeth Cymru (o fewn 10 diwrnod i gyflwyno'r ffurflen) ac mae'n ddyletswydd arnaf i/arnom ni i edrych dros y wybodaeth sydd yn y llythyr/e-bost yma er mwyn darganfod unrhyw gamgymeriadau, a byddaf/byddwn yn hysbysu UAC yn syth.
- Fy nyletswydd i/ein dyletswydd ni yw edrych dros y wybodaeth ar gopi caled/electroneg o'r ffurflen SAF a gyflwynwyd er mwyn darganfod unrhyw gamgymeriadau a byddaf/byddwn yn rhoi gwybod i UAC yn syth, a dim yn hwyrach na'r 15fed o Fai, o'r flwyddyn berthnasol neu unrhyw ddyddiad arall a benodir yn lle'r dyddiad hwn gan yr awdurdod perthnasol.
- Rydw i/rydym ni yn cydnabod ac yn cytuno bod y penderfyniad i gynnis cymorth dros y ffôn a/neu trwy e-bost o fewn disgrisiwn llwyr UAC.
- Rydw i/rydym ni yn caniatáu i UAC gwblhau a chyflwyno'r ffurflen ar fy/ein rhan ac yn cadarnhau bod yr holl wybodaeth sydd wedi ei gyflwyno i UAC yn gyflawn a chywir. Rydw i/rydym ni yn cydnabod a chytuno na fydd gan UAC unrhyw atebolrwydd i fi/ni mewn achos lle rydw i/rydym ni wedi darparu gwybodaeth anghywir neu gamarweiniol neu os ydwn i/ydym ni heb ddarparu unrhyw wybodaeth berthnasol i UAC.
- Rydw i/rydym ni yn cytuno i indemnio UAC yn erbyn unrhyw golledion a ddaw i ran UAC o ganlyniad i wybodaeth anghywir neu gamarweiniol a ddarparwyd gen i/gennym ni i UAC neu os ydwn i/ydym ni yn hepgor gwybodaeth i UAC.
- Rydw i/rydym ni yn cydnabod boed bynnag y dull o gymorth a roddir i mi/ni gan UAC bod yr ymwadiad yma yn weithredol ac na fydd gan UAC unrhyw atebolrwydd am unrhyw wybodaeth anghywir yn y ffurflen nac fod gen i/gennym ni unrhyw hawl am ddigolledu yn erbyn UAC am unrhyw wybodaeth anghywir, camgymeriadau neu unrhyw wybodaeth wedi ei hepgor ar y ffurflen a gyflwynwyd.
- O ddarllen y ffurflen yma, rydw i/rydym ni yn ymwybodol o'r ymwadiad uchod ac yn cadarnhau fy mod/ein bod yn ymwybodol o'r hawl i mi/ni i gael cyngor cyfreithiol annibynnol ac wrth barhau i gyfarwyddo UAC yn cadarnhau fy mod/ein bod yn derbyn yr ymwadiad uchod ac yn deall ei ganlyniadau.

Arwyddwyd gan..... Dyddiad.....

Ar ran ..... (teitl masnachu'r busnes)

## SAF disclaimer form 2024 (phone appointment)

I/We.....(Names)

Of.....

.....(Address)

### Hereby confirm and declare that:

- It has been explained to me/us that the Farmers' Union of Wales (FUW) accepts no responsibility on the part of itself or any members of staff (through their employment), whether in contract, tort (including negligence) or otherwise in connection with the assistance provided in completing my/our SAF form.
- I/we understand that it is my/our responsibility to provide full and accurate information as requested for the completion of the said forms and that the FUW do not accept any responsibility for incorrect information given.
- I/we understand that it is my/our responsibility to ensure that I/we comply with all cross compliance standards as set out in 13 statutory management requirements (SMR) and 7 good agricultural and environment conditions (GAEC) these include rules such as stock record keeping, NVZ nutrient management workbook completion and animal welfare standards.
- I/we understand that the FUW is able to assist with the completion and submission of the forms.
- It is my/our responsibility to check the completed forms for accuracy after the form is submitted online to the Welsh Government.
- Once the form has been completed and submitted I/we confirm that I/we am/are aware that there is a 30 day period (running from the date of the deadline to submit the form) in which the form can be checked for any obvious errors. I/we agree that I/we will check the submitted form within the relevant period and that I/we will notify FUW if there is any incorrect information on the submitted form or if any information has been omitted from the submitted form.
- It is my/our duty to monitor and ensure that I/we receive a SAF acknowledgement letter/email including details of field and schemes claimed data from the Welsh Government (within 10 days of form submission) and that it is my/our duty to check the data on this letter/email in order to identify any errors of which I/we will then immediately notify the FUW.
- It is my/our duty to check the data on the hard/electronic copy of the submitted SAF in order to identify any errors of which I/we will then immediately notify the FUW no later than the 15th of May of the relevant year or any other date that might be issued in place of this date by the relevant authority.
- I/we acknowledge and agree that the decision to provide assistance by telephone and/or email shall be at FUW's sole discretion.
- I/we consent to FUW completing and submitting the form on my/our behalf and confirm that all information provided to FUW will be full and correct. I/we acknowledge and agree that FUW shall have no liability to me/us in the event that I/we provide incorrect or misleading information or if I/we omit any relevant information to FUW.
- I/we agree to fully indemnify FUW against any losses that FUW might suffer or incur as a result of incorrect or misleading information provided by me/us to FUW or if I/we omit relevant information from being provided to FUW.
- I/we acknowledge that regardless of the method of assistance provided by FUW the disclaimers in this document apply and that FUW shall have no liability for incorrect information in forms nor that I/we have any recourse against FUW for any inaccurate information, errors or omissions on submitted forms.
- By reading this form I/we am/are now aware of the above disclaimer and confirm that I/we am/are aware of my/our right to obtain independent legal advice and that by continuing to instruct the FUW confirm that I/we accept the above disclaimer and understand its consequences.

Signed..... Dated.....

On behalf of..... (trading title of business)

# Yswiriant Bywyd

## Ydych chi wedi cynllunio ar gyfer dyfodol eich teulu?

Mae yswiriant bywyd yno i amddiffyn chi a'ch teulu - gan sicrhau bod y bywyd rydych chi'n rhannu gyda'ch gilydd wedi'i ddiogelu, hyd yn oed ar ôl i chi farw.

## Gall yswiriant diogelwch unigol gynnwys:

- Yswiriant Bywyd
- Yswiriant Salwch Difrifol
- Diogelu Incwm

## Sut mae Yswiriant Bywyd yn gweithio?

Meddylwch am yswiriant bywyd fel rhwyd diogelwch. Gallai dalu swm o arian petaech chi'n marw yn ystod cyfnod y polisi. Neu os ydych chi'n cael diagnosis o salwch difrifol, mi all yr yswiriant iawn wneud cyfandaliad i liniaru'r effaith ariannol arnoch chi a'ch teulu. Petaech chi'n cael diagnosis o salwch difrifol, mi fyddai yswiriant diogelu incwm yn sicrhau eich bod yn parhau i dderbyn swm misol nes ichi allu dychwelyd i'r gwaith.

**Ffoniwch ni  
heddiw ar  
0344 800  
3110**



info@fuwinsurance.co.uk | www.fuwinsurance.co.uk

Gwasanaethau Yswiriant FUW yw arddull masnachu FUW Insurance Services Limited sydd wedi'u hawdurdodi a'u rheoleiddio gan y Financial Conduct Authority. Rhif cofrestru 615251. Swyddfa Gofrestredig: Llys Amaeth, Plas Gogerddan, ABERYSTWYTH, SY23 3BT. Wedi'i gofrestru yn Lloegr a Chymru o dan rif 07981993



# Young sheep farmers embark on NSA journey

NSA's Next Generation programme has gone from strength to strength since its launch in 2014 and is part of NSA's wider Next Generation initiative, a dedicated area of work designed to encourage and support sheep farmers and service providers of the future.

Having undergone a thorough interview process assessing each candidate's experience and ambition for their own sheep farming careers as well as the future of the wider sheep sector the new group of Ambassadors will now begin a series of personal and career technical development sessions as part of the programme.

FUW Insurance Services Ltd Account Handler Emily Jones, *(pictured left)*, is one of the Ambassadors chosen as part of the team. Emily currently splits her time between her job and working on the family's sheep and beef hill farm in West Wales. In addition, she fills her busy schedule with volunteering work for the mental wellbeing charity, the DPJ Foundation, sits on several livestock breed society committees and is a qualified Registered Animal Medicines Advisor (RAMA).

The Ambassador interview panel were bowled over by Emily's enthusiasm for the programme and the future of the sheep sector during the selection interviews.

Emily said: "I am determined to make time for the NSA Next Generation Ambassador programme and I'm

looking forward to implementing ideas and experiences gained from it back with me to my pedigree flocks that include North Country Cheviot, Charmoise Hill and Dorset Down ewes as well as my family's commercial enterprise of Easycare and Welsh Mountain ewes."

FUW member Sean Jeffreys, *(pictured right)*, from Carmarthenshire has also been selected as Ambassador. As one of the new entrants to farming joining the programme this year Sean impressed the panel with his achievements in the sector so far. Having previously worked in industry as part of the Red Meat Development programme with Welsh levy board HCC, Sean is now a partner in a share farm agreement with FUW President Ian Rickman, running 600 Llandovery White Face hill ewes and a further 200 ewe lambs. He also rears calves on contract destined to produce Wagyu beef.

Sean has already completed several development schemes but was passionate to join the NSA programme as he believes it will assist him with his sheep farming knowledge and experience that no other similar scheme can. He says: "Becoming an NSA Next Generation Ambassador is great opportunity. I believe it will nurture, inspire and encourage us as a group of young sheep farmers creating leaders who will step up and take the reins in the future."



## RENEWABLE GRANTS FOR FARMERS

**DO YOU HEAT YOUR PROPERTY WITH OIL, LPG, COAL OR SOLID FOSSIL FUEL ?**

**PROVIDING YOUR TOTAL HOUSEHOLD INCOME IS LESS THEN £31,000**

**OR SOMEONE CLAIMS INCOME RELATED BENEFITS**

**OR SOMEONE HAS A MEDICAL CONDITION**

**AND HAVE A LOW ENERGY PERFROMANCEWE CAN INSTALL**

- FREE SOLAR PANELS
- FREE HEAT PUMP
- FREE RADIATORS
- FREE HEATING CONTROLS
- FREE INSULATION



**NEVER HAVE TO PAY ANY MONEY BACK, WE DO NOT OWN YOUR ROOF, THIS IS 100% FUNDED UNDER ECO4 BY THE UTILITY COMPANIES WE ARE A FAMILY RUN BUSINESS BASED IN WALES AND HAVE 5 STAR REVIEWS ON OUR FACEBOOK AND TRUSTPILOT**



**BOOK NOW**  
**01244 637410** OR EMAIL MARY



**WWW.GREENHOUSEENERGY.CO.UK**  
**MARY@GREENHOUSEENERGY.CO.UK**



# Schmallenberg virus (SBV) knocks early lambs

THE number of cases of Schmallenberg virus (SBV) have been rising across the UK. SBV is a viral disease that affects cattle, sheep and goats and was first detected in August 2011 in Germany.

In the 6 weeks to January 2024, APHA confirmed 63 cases of SBV; the majority of which were detected in stillborn lambs. SBV is not transmitted animal to animal but is spread via midges which are more active in the warmer wetter months. The recent rise is thought to be due to the warmer weather experienced in the Autumn of 2023.

Alongside a growing number of cases in the South of England and the Midlands, SBV has also been detected in Carmarthenshire, Ceredigion and Pembrokeshire.

SBV often presents as late abortions or birth defects, however it is important to recognise that not all cases of foetal abnormality will be caused by SBV. Foetal deformities are more prone in days 25-50 of the sheep gestation period, and days 62-180 in cattle. Older foetuses are able to clear the virus.

SBV corrupts the foetal nerve tissue, which leads to brain and spinal cord abnormalities, as well as other issues with muscles and the skeleton. Common abnormalities include bent



limbs, fixed joints, fused neck and legs and nervous signs such as uncoordinated movement, recumbency, inability to suck and convulsions.

In adult animals, clinical signs include reduced milk yield, loss of body condition, loss of appetite and diarrhoea. Acute disease can last from 2 to 6 days and infected animals can quickly develop immunity to this virus.

No compensation schemes exist for infected stock and there is not a compulsory programme of culling infected stock. Due to the fact that the majority of SBV diagnosis is via newborn animals, movement restrictions would not be effective in controlling the disease as the infection would likely have occurred months prior to disease confirmation.

A vaccine against SBV is not currently commercially available, however the situation could change if more cases are identified.

Although SBV is not a notifiable disease, the FUW continues to stress that farmers should familiarise themselves with the clinical signs of the disease in order to report suspicious cases to APHA for testing as part of the enhanced surveillance programme for this disease.

# BTV restrictions ease due to seasonally vector low period

GREAT BRITAIN is now in a 'seasonally vector low period' for BTV 3 and this has led to changes in the control measures adopted and the temporary easing of BTV control restrictions within the Kent and Norfolk Temporary Control Zones (TCZ).

The 'vector low period' is when biting midge activity is reduced due to current weather conditions. This makes transmission of the virus between midge and livestock much less likely. The midge vector is most active during the summer months but usually dies off during the winter. Midge do not actively bite at temperatures below 4 degrees celsius.

This reduction in transmission risk has led to the decision not to cull infected animals where results indicate older infection and the presence of BTV antibodies is detected. However, other measures, such as restricting infected animals to their current location may well continue. Animals testing negative from TCZs may be allowed to move under licence if certain conditions are met. Some restrictions on the movements of animals within the TCZ have also been eased. However, the temporary easing of restrictions will need to be revised when vector activity increases; usually in the warmer March and April climate.

As of the 4th of February 2024, there were 83 cases of BTV 3 in England on 44 premises. There is still no evidence that the disease is actively circulating in Great Britain.

There is currently no vaccine against BTV 3. The current strategy centres around quick reporting and heightened surveillance for the disease. For other Bluetongue virus stains (1, 2, 4 and 8) vaccination remains the most effective way to protect a herd or flock.

Members should also discuss the risks of importing stock from BTV affected countries with their vet. Farmers should also take particular care when importing germinal products and should make sure that they know where the animals or donors originated from and that they meet all the export health certificate requirements. Requesting a pre-export test should be considered.

**BTV is a notifiable disease. The FUW continues to urge members to be vigilant for signs of infection and to report any suspect cases to APHA**

FEED IT AND FORGET IT

**DK**  
DALLAS KEITH

ECO-PACKAGING

66% CO2 REDUCTION COMPARED TO PLASTIC BUCKETS

100% DEGRADABLE ECO PACKAGING

SAFE FOR ANIMAL CONSUMPTION

For more information please visit [www.dallaskeith.co.uk](http://www.dallaskeith.co.uk)

**BD**

Trydanwyr / Electrical

**BARRI DAVIES ELECTRICAL LTD**

Based in Ceredigion

- Installers of:  
Solar PV  
Battery Storage  
EV Chargers
- All aspects of electrical installation including agricultural & industrial
- Fault finding & callout service

**CONTACT US AT:**  
t: 01239 654135  
e: [info@bdelectrical.co.uk](mailto:info@bdelectrical.co.uk)  
w: [bdelectrical.co.uk](http://bdelectrical.co.uk)

**Solar PV installers**

**IC EIC**  
APPROVED CONTRACTOR

**MCS**  
CERTIFIED

# FUW at the heart of discussions on legislative powers on livestock worrying

WITH lambing fast approaching across Wales, the FUW is pleased to be at the heart of important discussions on the provision of better legislative powers relating to dog attacks on livestock. The Union has been fully and publically supportive of improved powers for police in order to help officers to respond more effectively when there has been a dog attack.

Sharing personal examples of dogs attacking livestock, FUW Regional Vice President Anwen Hughes and her family at Llanarth reported that they had experienced a number of incidents in recent years, where dogs were harassing and killing stock at their Bryn Gido sheep farm. "We have received great support from our local rural crime team and the FUW," explains Anwen who farms in partnership with husband Rhodri.

"In our case, a warning was given to the irresponsible dog owner, but there are many cases where the owner cannot be identified and this is why greater police powers, including those relating to crime investigation, must be brought forward.

At the recent on-farm meeting the FUW reiterated its concerns to Ceredigion MP Ben Lake and Ceredigion MS Elin Jones. Attendees welcomed the news that Therese Coffey's Private Members Bill on Livestock Worrying is now at its second reading at UK Parliament. The FUW has previously provided written and oral evidence on the need for increased powers and it is hoped that this bill, which has been supported by Ben Lake,

will soon be approved by both houses of parliament and become legislation.

Alongside political engagement, the FUW continues to work with Wales Rural and Wildlife Police Crime Coordinator, Mr Rob Taylor, in order to identify key asks and share members' experiences. This includes discussions with FUW staff members at a recent fact finding event. He also outlined his past experience as a North Wales Police Sergeant tasked with establishing the first dedicated rural policing crime team of its kind in the UK over 10 years ago.

Speaking to the FUW Mr Taylor said:

"Building up trust and a positive working relationship with farmers was instrumental to the success of the rural policing team in north Wales. Dog worrying incidents have been the bane of farming life in recent years, so legislation to strengthen police powers to investigate and convict criminals is crucial.

In my role as the all Wales Rural and Wildlife Police Crime Coordinator I will continue to work with our farming communities and also give support to our rural police officers. This work is ongoing and will include supporting all officers with meaningful training, knowledge and guidance to deal with issues affecting farmers and our rural communities."

This FUW agrees that, in conjunction with better powers, this positive working relationship is at the heart of successfully dealing with dog attacks.

"Any powers that make it easier for the police to collect evidence and, in more serious cases, seize and detain dogs to reduce the risk of further incidents in our farms and fields, can only be a good thing.

"It is difficult to unsee the horror left behind after dogs have attacked and disfigured sheep in a field. It impacts our own mental health and well-being, in addition to the cost implications it has on the business. It is a harrowing situation to be in," added Anwen Hughes.

"Any powers that make it easier for the police to collect evidence and, in more serious cases, seize and detain dogs to reduce the risk of further incidents in our farms and fields, can only be a good thing."



From left, FUW Ceredigion Deputy County Executive Officer Mari Davies, Insp. Matthew Howells, Partnerships Inspector in Ceredigion & Chair all Wales Farm Crime Forum, FUW Policy Officer Elin Jenkins, Ben Lake MP, FUW Regional Vice President Anwen Hughes, Elin Jones MS and FUW President Ian Rickman.



## WALES LONGEST AND LARGEST SUPPLIER OF 4 DOOR PICK-UPS

### 4 DOOR PICK-UPS WITH VAT @ 20%

- 21 MITSUBISHI L200 WARRIOR, MANUAL, SERVICE HISTORY
- 21 NISSAN NAVARA, N-GUARD, AUTO, 24,000 MILES, GREY.
- 21 NISSAN NAVARA, AUTO, LOCALLY OWNED
- 70 FORD RANGER LTD 2L, 10 SPEED AUTO, ONE OWNER, SERVICE HISTORY, 9,500 MILES.
- 20 SSANGYONG MUSSO RHINO, AUTO, WARRANTY TIL 2027 FULLY LOADED WITH EXTRAS
- 20 FORD RANGER LTD, MANUAL, SERVICE HISTORY
- 69 NISSAN NAVARA, N-GUARD, AUTO, 35,000 MILES GREY.
- 19 FORD RANGER, LTD 3.2 AUTO, 26,000 MILES IN BLACK.
- 19 NISSAN NAVARA, TEKNA, LOCALLY OWNED, IN RED, SERVICE HISTORY.
- 17 NISSAN NAVARA, TEKNA, AUTO, ONE LOCAL OWNER.
- 15 FORD RANGER XLT, LOCALLY OWNED, MANUAL.
- 62 ISUZU D-MAX IGER, AUTOMATIC.

### TOYOTA PICKUPS - SUPPLIED BY US

- HILUX 2 DOOR METALLIC GREY T-BAR LINER
- 69 HILUX INVINCIBLE, MANUAL, SERVICE HISTORY, BLUE.
- 65 HILUX INVINCIBLE, ONLY 54,000 MILES, ONE LOCAL OWNER.
- 14 HILUX ACTIVE, ONLY 55,000 MILES.

### OTHER

- 18 PEUGEOT PARTNER SE VAN, LOCALLY OWNED.
- 16 SSANGYONG TIVOLI 1.6 LOCALLY OWNED FSH
- 65 SSANGYONG KORANDO, AUTOMATIC, LOCALLY OWNED LOW MILES.
- 61 LANDROVER, 110 XS LOW MILEAGE.
- 1982 LANDROVER 88 4 CYLINDER PETROL, ONLY 47,000 MILES.
- 1966 LANDROVER 88 SERIES 2A, ONLY 76,000 MILES.



High Noon Garage Whitemill  
Carmarthen Carms SA32 7EN  
5 MINUTES FROM CARMARTHEN

01267  
290 900

www.GERAINTJONES4X4.co.uk

WE OFFER  
• SALES • SERVICING  
• PARTS & ACCESSORIES

SALES TEAM ASK FOR:  
Marie or Diane  
STORES & SERVICE TEAM ASK FOR:  
Beryl or Marie

OPENING HOURS  
MONDAY - FRIDAY 8.30 - 5.30  
SATURDAY 8.30 - 3.00  
OUT OF HOURS  
APPOINTMENTS AVAILABLE

INDEPENDENT TOYOTA HILUX SPECIALIST

Models portrayed for illustration purposes only.  
Details correct at time of going to press.  
All commercials +Vat @20%.

# Political Matters

by Lauren Price, FUW Senedd and Parliamentary Liaison Officer

I'VE been asked several times recently if I'm settling in well with the Union. When things calm down long enough for me to take it all in, I will let them know!

The elephant in the room, and the topic of conversation that has dominated all of our lives over the past two months is the SFS. Nearly every meeting in that period has been overshadowed by the countless issues within the consultation document, and working through the negative impacts that it would have in its current form.

We have seen a Welsh Government ready to do whatever it takes to save the jobs being lost at TATA Steel - which we understand. However the same Government turns a blind eye to its own economic impact assessment of the SFS, that shows significantly more direct job losses in our industry as a result of their proposals! Where is the consistency?

Political meetings have continued. We recently took the opportunity to meet Mike



From left, Mike Hedges MS and FUW President Ian Rickman discuss the impacts that removing direct support to farmers would have.



FUW President Ian Rickman, (right), was pleased to discuss the ongoing SFS consultation and discuss the FUW's economic modelling paper with leader of the Welsh Conservatives, Andrew RT Davies MS.

Now is the time to stick together, make the Welsh Government listen and make sure that all members respond to the consultation

Hedges MS, to explain to him the importance of direct farm support as proven by the FUW's economic modelling document. We also caught up with; Andrew RT Davies MS, leader of the Welsh Conservatives, to discuss the SFS, Senedd reform and funding, and Jennifer Pride, Head of Energy Delivery, to discuss grid infrastructure and upgrades, small scale renewable energy options, nationalised renewable energy projects and NRW's compensatory tree planting for trees felled for renewable energy projects.

Working closely with NFU Cymru has been incredibly important of late. Recently the FUW, NFU Cymru and the CLA attended a meeting with the Secretary of State for Wales, David TC Davies MP. We brought several things to his attention. The SFS was at the top of the agenda but we also highlighted the many pressures the industry in Wales faces including TB, funding cuts, planning issues and barriers to diversification.

We will continue this joint working with NFU Cymru as we head into the Spring Conference Season. By the time you read this we will have attended the Welsh Conservative Party Conference, where we will hold a joint fringe event on the SFS, and will be looking ahead to the Plaid Cymru Conference at the end of March.

Attending the Party Conferences is crucial as we head towards a General Election - likely to be towards the end of this year. We have been working on the FUW's manifesto, which is key in influencing the election commitments of the political parties. This is now ready and I'm excited to share it with everyone.

Something that caught our attention recently was an announcement by Julie James MS, Minister for Climate Change. She has released a White Paper called 'Securing a Sustainable Future: Environmental Principles, Governance and Biodiversity Targets for a Greener Wales'. In her statement the Minister said she would be looking at things such as boundaries of designated areas and how farmers farm within national parks. There is a concern that further environmental legislation could be placed on farmers. This is something we are monitoring closely, and will of course update you when we know more.

We continue with farm visits and since February's Y Tir we have met with Hannah Blythyn MS and James Davies MP on farms close to the Ruthin office, where we discussed the SFS, Welsh Government funding cuts, UK Government funding, renewable energy and grid infrastructure. We have also met Elin Jones MS and Ben Lake MP on FUW Regional Vice President Anwen Hughes's farm in Ceredigion to discuss livestock worrying and the new legislation making its way through the House of Commons at the moment. We also managed to mention, no surprise here, funding issues and the SFS.

After the Union and Welsh Government roadshows on the SFS, there is both anger and frustration within the industry, something I also feel as we live the SFS consultation day in and day out. It's easy to think that the situation we face is hopeless and that the Welsh Government is simply not listening but we must ignore such thoughts. Now is the time to stick together, make the Welsh Government listen and make sure that all members respond to the consultation.



FUW President Ian Rickman (left) with Secretary of State for Wales, David TC Davies MP, highlighting the many pressures the industry in Wales face.

PLATINUM PARTNER

FINALIST 2022

# LHP

Accountants with Farming experience

Advice on diversification  
Renewable Energy  
Xero Cloud Packages  
Tax | Audit | Business Advice  
Succession & Exit Planning  
VAT & Payroll Services  
Inheritance Tax & Probate

Free  
initial  
consultation

info@lhp.co.uk

Cyfrifwry a phrofiad ym maes amaeth

Cyngor ar arallgyfeirio  
Ynni adnewyddadwy  
Pecynnau cwmwl Xero  
Treth | Archwilio | Cyngor Busness  
Cynlluniau olyniaeth ac ymadael  
Gwasanaethau TAW a chyflogres  
Treth etifeddiant a phrofiant

Ymgynghoriad cyntaf am ddim

**Carmarthen**  
Llys Deri,  
Parc Pensarn,  
Carmarthen,  
SA31 2NF  
01267 237534

**Haverfordwest**  
1st Floor Agriculture House,  
Winch Lane,  
Haverfordwest,  
SA61 1RW  
01437 766749

**Tenby**  
Barclays Bank Chambers,  
18 High Street,  
Tenby,  
SA70 7HD  
01834 844743

**Lampeter**  
81 Bridge St,  
Lampeter,  
SA48 7AB  
01570 422204

**Cross Hands**  
Unit 7, Meadows Bridge,  
Llwyn-Yr-Eos,  
Parc Menter,  
Cross Hands,  
SA14 6RA  
01269 834877

**Aberaeron**  
1 North Road,  
Aberaeron,  
Ceredigion  
SA46 0JD  
01545 570401

## Defra Ministers approve AHDB Levy increase

DEFRA Ministers have approved an increase to the levy rate for the Dairy, Pork, Cereals and Oilseed sectors following AHDB's Funding Your Future campaign last autumn.

For milk producers in Wales, the increased levy equates to a total of 0.08 pence per litre, an increase of 0.02 pence per litre, which will be implemented from April 2024.

AHDB states that the increase will support the ability of AHDB to continue its work in growing export opportunities and exploring further marketing campaigns in addition to help plug the 40% funding gap as a result of inflation.

The FUW Milk and Dairy Committee were critical of the decision to increase levy rates during this challenging period of extreme financial pressure facing the dairy sector in Wales. However, in appreciation of the value of AHDB's work in promoting the sector, the levy increase was supported.



# Dopey lambs? Large lambs? Multiple lambs? No Prob-lambs!



## Lamb Colostrum

Provita Lamb Colostrum substitutes or supplements maternal colostrum providing high levels of natural colostrum, energy, egg powder and beneficial bacteria.

*"The best I have ever used.  
It mixes perfectly even when cold!"*  
*"Better thrive on our lambs in first  
6 weeks"*

## Lamb Colostrum FREE Lamb Feeds...



**2.5kg = 20%/20 lambs extra FREE!**  
**1.25kg = 20%/10 lambs extra FREE!**  
**500g = 20%/4 lambs extra FREE!**  
**12x50g = 9%/2 lambs extra FREE!**

## Lamb Jump Start

Jump Start has very high levels of energy, egg powder, minerals and vitamins. Use for weak and multiple lambs and to counteract common newborn deficiencies.

*"Boosts lambs to get up on their feet  
and sucking quickly"*  
*"Massively helps bring the lambs  
round after a hard lambing"*



## Lamb Response

Lamb Response provides beneficial bacteria, egg powder and vitamins. Use on all lambs to help prevent upsets, and to improve gut condition and digestion.

*"Since using it, we haven't lost a  
lamb to watery mouth!"*  
*"A literal life saver and is an absolute  
must in the lambing shed!"*



**CONTACT US**  
☎ +44 28 8225 2352

✉ info@provita.co.uk  
🏠 www.provita.co.uk



**Provita**  
Animal Health Naturally

# Summary of Sustainable Farming Scheme Consultation

by Gareth Parry, FUW Deputy Head of Policy

I HOPE that by now you have had an opportunity to attend one of the many FUW county meetings, Welsh Government roadshow events or any other meeting held to explain the proposals set out in the latest Welsh Government consultation on the Sustainable Farming Scheme.

We have been consulting with you on the development of the Welsh Government's Sustainable Farming Scheme since 2018, and whilst the proposals have improved significantly when compared to the initial draft published back in 2018, there are clearly a number of concerns that remain and must be addressed.

This is the third and final consultation before the scheme is launched in 2025 and the importance of getting it right cannot be underestimated. Within the FUW our members are at the core of what we do and we are fully aware of the strength of feeling and frustration felt by our members and the wider farming community.

The recent meetings at Welshpool and Carmarthen livestock markets made a clear statement about the frustration felt by many farmers and illustrated the groundswell of concern with regards to the current situation and future direction of agricultural policy here in Wales. The FUW is closely monitoring the situation and has an open dialogue with the organisers of these events, and I was pleased to attend and speak at the meeting in Carmarthen whilst our Deputy President, Dai Miles, was in attendance at the meeting in Welshpool.

However, whilst I fully understand the feeling of many at these meetings that we need to ensure that the voice of Welsh farmers is being heard by decision makers in Wales and Westminster, I cannot overstate how important it is for every individual and business that will be affected by these proposals to formally respond to this consultation. **It's absolutely crucial that we all do so.**

You can respond to the consultation in a number of ways, including by;

- responding online via the Welsh Government website: <https://www.gov.wales/sustainable-farming-scheme-consultation>
- sending your response via email: [SustainableFarmingScheme@gov.wales](mailto:SustainableFarmingScheme@gov.wales)
- posting your response to: Rural Affairs, Land Management Reform, Welsh Government, Cathays Park, Cardiff CF10 3NQ, or by



- using the submission form via the FUW website: <https://www.fuw.org.uk/index.php/en/sfs-consultation>

It is vitally important that, in order to have as great an impact as possible, we should all respond as individual farmers and businesses. This will ensure that the Welsh Government receives a true reflection of the feelings of the people affected by their proposals and offers an opportunity to again highlight the impact that these proposals will have in their current form on the economy and communities of rural Wales.

I would also ask you to contact your local elected representatives at every opportunity, whether they are county councillors, local and/or regional Members of the Senedd or Members of Parliament at Westminster. We need to ensure that they hear your voice and your concerns in order to ensure that we, as Union Officials, can continue to bring pressure to bear on the Welsh Government to revise the scheme in a way that avoids the potential impacts highlighted by the ADAS modelling report.

Whilst FUW county staff can offer help with any support you may require in submitting your response we have not prepared a standard response for members to use in this instance. The reason for this is that we have learnt, through bitter experience, that Governments, in Cardiff and Westminster, often treat generic template responses as one single response and therefore submitting individual responses with specific examples and concerns will have a far greater impact. I appreciate that this means more work for you as working farmers but I can assure you that it will be more effective in getting our message to the Welsh Government than simply generating numerous standard letters to an identical template.

To try and offer further support, we have summarised some key points as guidance for you to consider when preparing your submission to this final consultation. These points will also form the basis of the Union's official response alongside feedback received from members via the numerous and well attended county meetings held by the FUW to explain the SFS as it currently stands. The closing date for submissions is the 7th of March 2024 so please do start preparing your submission now.

If you require further support with responding to the consultation or have any further questions, please do not hesitate to contact your local FUW county office.

The closing date for submissions is the 7th of March 2024 so please start preparing your submission now

## Sustainable Farming Scheme Process

### Scheme eligibility

To be eligible for the scheme, you must:

- undertake agricultural or ancillary activities
- have at least 3 hectares of eligible agricultural land OR be able to demonstrate at least 550 standard labour hours
- have exclusive occupation and management control of the land for at least 10 months of the year

### Operating model

The Welsh Government intends to use and develop the current RPW Online system. Farmers will be required to complete an annual declaration every year, similar to the SAF model, and application dates and payment dates will all remain the same.

### Appeals process

They propose to move away from the current appeals process which involves an independent panel and towards a two-stage review process involving different Welsh Government officials.

### Data confirmation

Later this year, there will be a data confirmation exercise where the farmer will be required to agree with the current maps of habitat, hedgerows and trees RPW currently have on file, or make amendments to make sure they are correct.

### Habitat baseline reviews

When, or if, you enter the scheme, there will be a Habitat Baseline Review which will follow the data confirmation process. This is important as your land classifications will determine the payments you will receive. There will be a second habitat baseline review which will be more in-depth and look at developing other support mechanisms in future.

### Carbon calculator

Farmers will be expected to undertake a carbon audit in the first year of joining the scheme, and again in 2029. The purpose of this is to develop an understanding of the sector's carbon footprint and to inform Optional and Collaborative Actions. All data will be anonymised. The Welsh Government is currently considering how to make sure all data is comparable by using one calculator or a selection of calculators which meet a certain standard.

## Transition Period & Payment Methodology

### Basic Payment Scheme

The BPS will be phased out during the transition period, 2025 to 2029, at a rate of 20% per year. The BPS budget for 2024 has been maintained at £238 million therefore you can calculate the absolute minimum you will receive in direct support over the next 5 years. Most rules such as Cross Compliance will remain the same, however, there will be some changes to the rules on entitlements.

BPS Receipts	100%	80%	60%	40%	20%	0%
2023	2024	2025	2026	2027	2028	2029
£5,000	£5,000	£4,000	£3,000	£2,000	£1,000	£0
£10,000	£10,000	£8,000	£6,000	£4,000	£2,000	£0
£15,000	£15,000	£12,000	£9,000	£6,000	£3,000	£0
£25,000	£25,000	£20,000	£15,000	£10,000	£5,000	£0
£50,000	£50,000	£40,000	£30,000	£20,000	£10,000	£0

### Payment methodology

From 2025 onwards, farmers will have a choice of whether to continue to receive BPS, or to enter the Sustainable Farming Scheme. You will have this choice in each year of the transition period. Once you go into the SFS, you will not be able to return to the BPS. If you enter the SFS, you will receive a Universal Baseline Payment which will be calculated using 4 payment rates:

- 1) Maintenance of existing woodland (excludes existing SSSI woodland)
- 2) Woodland creation (may be payable for 12 years before being paid for maintenance)
- 3) Habitat maintenance (excludes existing SSSI habitat)
- 4) Actions (all eligible areas including SSSIs)

These payment rates will be made up of costs incurred, income foregone and a social value. They are also considering capping these payments. The Welsh Government will constantly monitor and review these payment rates throughout the development of the scheme. Under these latest proposals, it's only the social value element of the payment that will compensate for the loss of direct payments. However, without details on payment rates, it's almost impossible to gauge how close the scheme payments will come to compensating for the tapering, and eventual disbandment, of the BPS.

### Stability payment

You will receive a stability 'top-up' payment if your universal baseline payment is less than the 'notional' BPS payment. The 'notional' BPS value is calculated using the farm area in the current year multiplied by the previous year's BPS payment rates including the effects of tapering. In basic terms, your SFS payment will be 20% higher than what you would have received through the BPS in the current year. When the universal baseline payment exceeds last year's BPS rate, the stability payment will come to an end.

Continues on page 15

## Universal Actions - General

### UA1: Benchmarking

Complete an annual measuring and monitoring self-assessment to optimise business and environmental performance.

List of mandatory Key Performance Indicators plus 3 additional modules, or 2 per enterprise.

### UA2: Continuous Personal Development (CPD)

Build additional skills and knowledge by completing an annual training cycle.

Minimum of 6 CPD modules by April every year.

### UA3: Soil health planning

Building healthy soils through testing and soil health planning.

Test at least 20% of your farm in each scheme year (agriculturally improved areas plus habitat classed as enclosed semi-natural dry grassland).

### UA4: Multispecies cover crop

Protect soils from erosion and degradation through the establishment of a multispecies cover crop on all land which is uncropped over winter.

### UA5: Integrated Pest Management (IPM)

Complete an annual assessment of plant protection products used, and alternative methods employed to reduce chemical usage.

### UA6: Managing heavily modified peatland

Active management of modified peatlands to protect soil carbon stocks (list of Do Nots).



## Universal Actions - Habitat

### Universal Code for Habitat

For all habitats on your farm, you will be required to follow the Universal Code for Habitat (a list of Do Nots).

### UA7: Habitat maintenance

Maintenance of existing semi-natural habitats to optimise benefits for grazing livestock and wildlife.

For each habitat type, the Welsh Government will provide you with a list of:

- Aims
- Measurable Outcomes
- Management Recommendations
- Restrictions
- Potential Derogations

### Scheme rule - at least 10% of each farm is managed as habitat

Focus on field scale habitats i.e. species rich grasslands. This will also include ponds and scrapes, broadleaf woodland, and hedgerows in 'good condition'. The 'ground' flora layer of some woody habitats will also count. If you have more than 10% semi-natural habitat, other areas of lesser quality habitat i.e. bracken could be considered for tree planting / creating scrapes etc (subject to assessments).

If you have less than 10% habitat, you will be required to complete UA8.

### UA8: Create temporary habitat on improved land

Create additional temporary habitat features on improved land to meet the scheme requirement for a minimum habitat area.

### UA9: Designated Site Management Plans

Have a Management Plan with Natural Resources Wales in place for Designated Sites (SSSIs) in your control.

### UA10: Ponds and scrapes

Manage existing ponds and scrapes, or create new scrapes to boost wildlife associated with water features on your farm.

Farms of less than 80 hectares will need to manage at least two ponds and / or scrapes totalling at least 0.1 ha (1000m<sup>2</sup>).

Farms of more than 80 hectares will need to manage at least two ponds and / or scrapes totalling at least 0.2 ha (2000m<sup>2</sup>).

### UA11: Hedgerow management

Develop hedgerows to become thick dense stock proof barriers which also provide valuable shelter, and an important habitat for wildlife.

In 'good condition' consists of:

- The hedgerow being at least 2m tall and 1.5m wide or vice versa
- Having a maximum of 5% gaps
- Being stock proof in its own right
- Having at least one tree every 50m on average
- Have a 1m margin either side

### UA12: Woodland maintenance

Maintain existing woodlands to optimise benefits for livestock, wildlife, and business diversification.

### Scheme rule - at least 10% under tree cover as woodland or individual trees

Minimum of 10% tree cover on each farm to be met by 2030. This includes broadleaf and coniferous woodland, scattered groups, and individual trees in fields and hedgerows (greater than 3m in height), orchard trees and trees within agroforestry systems. The 10% tree cover requirement will be calculated using the plantable area of your farm, and will exclude unplantable areas i.e. tenanted land, permanent features and high-quality habitats.

If you have less than 10% tree cover, you will be required to complete UA13.

### UA13: Create new woodland and agro-forestry

Integrate additional trees and woodland to meet the scheme requirement for a minimum tree cover.

### UA14: Historic environment - maintenance and enhancement

Protect our important heritage features from further damage to conserve our distinctive cultural character.

This is the third and final consultation before the scheme is launched in 2025 and the importance of getting it right cannot be underestimated



## Universal Actions - Animal Health

### UA15: The Animal Health Improvement Cycle

Work with your vet to establish an ongoing proactive approach to animal health.

With your vet, you will be required to Measure (data recording), Plan (prioritise areas for improvement), Act and Review. One cycle per year.

### UA16: Good animal welfare

Complete competency training and carry out lameness and body condition scoring to improve livestock welfare standards.

Complete online training on BCS and mobility scoring for the relevant species (approx 2 hours and counts as part of the CPD UA).

### UA17: Good farm biosecurity

Establish biosecurity protocols to reduce the risks of disease entering or leaving your farm.

This includes wash stations, livestock secure farm boundaries and carrying out a biosecurity assessment of incoming animals.

## Optional & Collaborative Actions

The Welsh Government intends to introduce the Optional and Collaborative Actions into the scheme gradually throughout the transition period. The policies around these Actions haven't really changed since the proposals in 2021. These will be targeted to specific land or landscape features which go beyond the Universal Actions.

The Collaborative Actions will include 4 categories:

- 1) Landscape scale action
- 2) Innovation and knowledge transfer
- 3) Co-operative working
- 4) Added value

There will be the continuation of rural investment scheme type grants i.e. Small Grants - Yard Coverings and so forth. Some of these may develop into Optional and Collaborative Actions in future. These will be administered as separate agreements as they will tend to be longer term arrangements. As such, farmers outside of the SFS may be able to engage with these additional funding streams, although those in the universal layer of the scheme will receive priority.



## Sustainable Farming Scheme Consultation Response - Key Points

The Welsh Government intends to introduce the Optional and Collaborative Actions into the scheme gradually throughout the transition period. The policies around these Actions haven't really changed since the proposals in 2021. These will be targeted to specific land or landscape features which go beyond the Universal Actions.

The Collaborative Actions will include 4 categories:

- 1) Landscape scale action
- 2) Innovation and knowledge transfer
- 3) Co-operative working
- 4) Added value

There will be the continuation of rural investment scheme type grants i.e. Small Grants - Yard Coverings and so forth. Some of these may develop into Optional and Collaborative Actions in future. These will be administered as separate agreements as they will tend to be longer term arrangements. As such, farmers outside of the SFS may be able to engage with these additional funding streams, although those in the universal layer of the scheme will receive priority.

### Funding

The Sustainable Farming Scheme, underpinned by the first ever Agriculture (Wales) Act, represents the biggest change for Welsh agriculture since the EU Common Agricultural Policy (CAP). Now that we've formally left the EU, we no longer have the certainty provided by the seven year CAP budgetary periods and will now rely entirely on EU CAP replacement funds from the UK Government and subsequently the Welsh Government's budget allocations for rural affairs.

Between 2019 and 2025, Welsh agriculture will have received around £250 million less in funding than what we could have expected had the UK remained within the EU. This was a result of accountancy tricks by the UK Treasury. As a result, the Rural Affairs budget in Wales has been impacted and the Welsh Government is also proposing to further reduce the available funding despite the fact that the rural affairs budget represents just 2% of the overall Welsh Government budget.

The SFS will replace all forms of financial support that farmers currently receive and the overall budget must reflect this. Annual EU CAP legacy funding allocated to Welsh agriculture would now total around £450 million when taking into account inflation since 2013 when the 2014-2020 EU CAP budget was allocated. The Welsh Government must demand from Westminster and provide to the agricultural community the funding support that would have been available to the sector had we remained within the EU.

### Payment methodology

Since the initial consultation in 2018, the Welsh Government has made assurances that payments under the SFS would go beyond income foregone and costs incurred and properly reward farmers for carrying out various actions and providing environmental goods alongside producing sustainable food. The current proposals suggest that payment rates will be calculated using costs incurred and income foregone with an additional 'social value' payment.

The Universal Baseline Payment must provide long-term stability for farming businesses and the wider rural economy that relies on agriculture. It must also provide a

meaningful income stream for farming businesses which properly rewards farmers for undertaking Universal Actions and compensates for the loss of the BPS. The payment rates must also reflect the environmental work farmers throughout Wales have undertaken for decades and recognise the innumerable social and cultural contributions farming makes to rural communities.

It is also vital that the 'social value' payment does not result in a postcode lottery whereby some farm businesses receive higher payments than others for undertaking the same actions in different areas of Wales.

### Food production

Our susceptibility to global events that are beyond our control has rarely been exposed so starkly as during the past three years. The Covid-19 pandemic and the conflict in Ukraine have demonstrated the volatility of global supply chains and our reliance on imports of key commodities such as oil and gas.

We have witnessed how such events can cause seismic shifts in global supplies of food, fertiliser and fuel. With the world's population predicted to reach 9 billion people by 2050, the SFS must underpin the supply of high quality food produced by family farms in Wales. We cannot and should not reduce our ability to be more self-sufficient in terms of food production in such an uncertain world.

### Accessibility

Achieving the Sustainable Land Management objectives outlined in the Agriculture (Wales) Act relies almost entirely on the uptake of the SFS by all active farmers in Wales. As such, the scheme must be accessible and provide equal rights to all active farmers. A flexible approach is required which takes into account all sectors and farm types. The Welsh Government must ensure all Universal Actions and Scheme Rules are accessible and achievable by all and do not represent barriers to scheme entry. The 10% tree cover requirement, for example, represents a major barrier to scheme entry and will result in a significant reduction in farm output and land value.

The Welsh Government must also recognise the amount of time and effort involved in undertaking all Universal Actions and complying with the scheme requirements. This will be a major factor when farmers consider whether entering the SFS would be financially viable for their business.

The practicality and relevance of the proposed Universal Actions must be considered. For instance, the expectation for every farm business in the scheme to complete a minimum of 6 CPD modules per year regardless of farm size or output seems typical of a proposal dreamt-up in a comfortable office with little or no regard to the realities of farming on a day-to-day basis.

### Modelling

The Welsh Government's own modelling assessment on various payment rates suggests a reduction in Farm

Business Income (FBI) of up to £199 million, and a £125 million reduction in farm outputs. It suggests that 'all farms represent a reduction in the net value of support payments relative to under the BPS.' It also predicts a reduction of 122,000 livestock units in Wales and 11% less on-farm labour requirements. These figures are seriously concerning being based as they are on the Welsh Government's own impact assessment of the proposed SFS scheme.

The FUW recently published a report entitled "The Role of Farm Support in Wales' Livestock Supply Chains". This report models how much more profitable Welsh farm businesses would need to become on a per head or per hectare basis, or how much they would need to reduce their expenditure across key input areas in order to maintain current profit levels if direct farm support was cut by half or removed altogether. The calculations are chilling and hugely concerning.

For the scenario where direct support is reduced by 50%, a required increased profit per ewe of between £18.09 (hill cattle and sheep farms) and £24.06 (lowland cattle and sheep farms) coupled with an increased profit per cow of between £120.63 (hill cattle and sheep farms) and £160.39 (lowland cattle and sheep farms) is required to maintain overall farm profits.

Lowland cattle and sheep farms would have to increase their profits received per hectare by £88 in order to maintain farm income for the scenario whereby BPS payments are cut by 50%. This increases to £176 for the scenario whereby BPS payments are cut by 100%.

The results also highlight the significant savings that would have to be made for all farm types if farm profits were maintained purely by proportionally reducing expenditure across key inputs. For example, for all 8,937 farms included in the FBS data set we would see a total reduction of £12.15 million in veterinary and medicine expenditure. However, the total expenditure in that category is estimated to be £34.61 million for all FBS farms therefore the maximum possible reductions could be far greater whereby reductions in expenditure are not applied proportionately across key inputs.

Above all else, these results highlight the impacts for the wider rural economy and the potential impacts on businesses such as veterinary practices, agricultural merchants, garages and so forth.

Such impacts would have clear consequences for rural employment and would extend to those businesses that are not necessarily regarded as agricultural, but which rely directly or indirectly on farms for a proportion of their income.

### Other considerations

When responding to the consultation, please consider the impacts of either, i) entering the SFS in its current form, or ii) ceasing to receive any financial support on;

- your business and level of production
- labour requirements
- contributions to the local community (social, culture and language)
- amount of money spent with how many rural businesses
- any other business enterprises (diversified income)





# Call us to book your SAF 2024 appointment

IT'S that time of year again when we start thinking about Single Application Forms (SAF). The application window opens on March 4th and the FUW is reminding its members that county staff are here to help and ready to take the stress of filling the form away.

The FUW provides this service as part of the membership package, which has proved invaluable for thousands of members over the years - saving them time and a paperwork-headache.

FUW Special Policy Advisor Rebecca Voyle, (pictured below), said: "The SAF completion process is probably the single most important form completion exercise being carried out by Welsh farmers since 2004, and the financial repercussions of errors on the forms are severe. Our staff are not only well trained but very well practised in dealing with the complex application process."

Since the Welsh Government mandated that all applications should be done online, the FUW has focused on providing the best possible service to its members.

"I encourage our members and first time form fillers to contact their local office as soon as possible to book an appointment if they need help in filling out the form," added Rebecca Voyle.



## Single application form checklist

Please find below a list of the information which you will need to bring with you to your appointment, if applicable, to enable us to assist you with the completion of your form:

- Your **e-mail address** if you have one and mobile phone number.
- 2023 SAF copy.
- **Rental dates for all rented land** currently declared on your SAF.
- Details of any **new land** to be added to your form including field numbers and a map.
- \* If the **land is rented** you will need to provide the rental start and end dates and the contact details of the landowner, including CRN, if applicable. In addition, a copy of the FBT or a letter from the landowner confirming the rental details and that you have management control will be required.
- \* If the **land has been purchased** you will need to provide a copy of the Land Registry documents or the TP1/TR1 document with associated map.
- Details of any **land given up**, including the field numbers, date it was given up and contact details of the landowner.
- Your **Habitat Wales Scheme** agreement.
- Your full agreement and scheme maps if you are in a **farm woodland scheme** and the **sizes of any areas of land which you have planted with trees** outside of a formal scheme.
- Your **farm assurance** scheme number/s.
- **Organic Support and Organic Conversion Scheme** - Your current certificate and field schedule from your organic certification body. If you are an organic dairy producer the following exact stock figures will be required:
  - \* Dairy cow/heifers over 24 months
  - \* Dairy heifers 6 - 24months
  - \* Dairy goats/sheep 6 months or more
  - \* Dairy goats/sheep less than 6 months
- Details of any **entitlements** which you have traded, through sales, purchases or leases.
- Details of any **queries received from RPW** with regards to your 2023 SAF, including remote sensing inspection reports.
- Total approximate **stock figures** for the following categories, including tack animals on your land:
  - \* All dairy cows, bulls and replacement heifers 6 months old and over but under 24 months.
  - \* All dairy cows, bulls and replacement heifers 24 months old or over.
  - \* All beef cows, bulls and replacement heifers 6 months old and over but under 24 months.
  - \* All beef cows, bulls and replacement heifers 24 months old or over.
  - \* All store/finishing cattle 6 months old and over but under 24 months.
  - \* All store/finishing cattle 24 months old or over.
  - \* All sheep over 6 months old.
  - \* Pigs, goats, poultry, horses and any other livestock.

Gadewch i ni ysgwyddo'r baich o lenwi'r ffurflen  
Let us take the stress of form filling away

**H**  
**HAFREN**  
FURNISHERS SINCE 1965

## WALES' LARGEST INDEPENDENT FURNITURE RETAILER



ABERYSTWYTH  
STORE OPEN  
7 DAYS  
A WEEK

Aberystwyth (On A44)  
SY23 3TN  
01970 864000

[www.hafrenfurnishers.co.uk](http://www.hafrenfurnishers.co.uk)



FREE DELIVERY IN ENGLAND & WALES

Llanidloes (off A470)  
SY18 6ES  
01686 414000

opico.co.uk



Grass Master

## ADFYWIWCH EICH GLASWELLTIR

### Well managed grassland is essential for maximising productivity.

Soil conditioning as well as over-seeding or reseeding will help achieve greater yields from grassland.

Correct and timely usage of OPICO's range of grassland maintenance and improvement machinery, within a framework of good grassland management will help deliver healthy, free draining, well aerated soil, producing quality grass and forage to benefit herd and flock productivity.

- **Grass Master** - a high-output model for large scale farms & contractors
- **Grass Harrow** - improve & maintain grass quality
- **Harrow & Seeder** - overseed worn leys to boost grass & clover content
- **Sward Lifter** - improve soil health, drainage & aeration



GRASS HARROW



HARROW & SEEDER



SWARD LIFTER

OPICO Ltd.  
01778 421111

ask@opico.co.uk  
opico.co.uk



Profit from our knowledge

# Rhannu negeseuon pwysig am ddiogelwch ar y fferm gyda phlant Cymru



Y Welsh Whisperer yn ymweld ag Ysgol Wirfoddol Myfenydd, Llanrhystud, Ceredigion.

MEWN cydweithrediad gyda Phartneriaeth Diogelwch Fferm Cymru (WFSP) mae'r Welsh Whisperer wedi bod yn teithio o amgylch Cymru yn ymweld â 15 o ysgolion cynradd.

Yn ystod ei ymweliadau diddanodd y Welsh Whisperer y plant drwy ganu cân a darllen stori 'Diolch Byth am Bob', llyfr a gomisiynwyd gan y bartneriaeth yn 2023.

Mae stori Bob, sef ci defaid wedi'i greu ar gyfer plant cyfnod sylfaen. Mae'r stori yn sôn am sefyllfaoedd fel diwrnod cneifio, silwair neu waith tractor, ac yn amlinellu pa mor beryglus mae'n gallu bod i blant. Diolch byth, mae Bob yn achub y dydd bob tro, ac yn gofalu bod y plant yn cadw'n ddiogel.

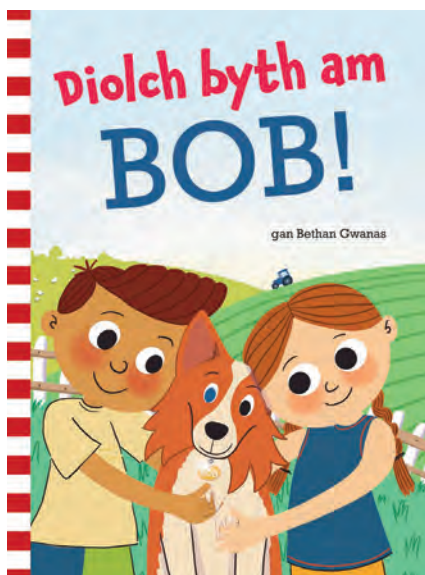
Mae ymweliadau'r Welsh Whisperer yn rhan o ymgyrch ehangach mae'r WFSP yn ei gynnal er mwyn tynnu sylw plant a'i teuluoedd at beryglon y fferm. Mae damweiniau yn gallu digwydd mor sydyn felly mae'n hanfodol cynllunio ar gyfer tasgau a sicrhau diogelwch chi a'r teulu. Arhoswch, meddylwch.

Yn ogystal â llyfr Diolch Byth am Bob, mae adnoddau arall ar gael megis fideo, llyfrau gweithgareddau ac arwyddion diogelwch i'w harddangos ar glos y fferm. Mae holl adnoddau'r bartneriaeth ar gael ar wefan Cyswllt Ffermio. Chwiliwch am Ddiogelwch y fferm.

Mae Partneriaeth Diogelwch Fferm Cymru (WFSP) yn bartneriaeth gydweithredol o brif sefydliadau rhanddeiliaid amaethyddol sy'n cydweithio i helpu i ostwng y nifer annerbiniol o ddamweiniau difrifol a marwolaethau sy'n digwydd bob blwyddyn ar ffermydd ledled Cymru.



Mae ymweliadau'r Welsh Whisperer yn rhan o ymgyrch ehangach mae'r WFSP yn ei gynnal er mwyn tynnu sylw plant a'i teuluoedd at beryglon y fferm



The Wales Farm Safety Partnership are heading up a rural school's campaign that highlights the importance of keeping safe on farm. The Welsh Whisperer, a popular Welsh singer/songwriter visited 15 schools across Wales, along the way singing songs and reading the book 'Nice one Bob'. WFSP Ambassador Glyn Davies went along to a school in Ceredigion and gave a short presentation to the children. Unfortunately farm accidents happen and happen so quickly. It is essential to plan and ensure you and your family are always kept safe. Stop and think!

To read the full article in English head to the FUW website - News - Y Tir News: "Sharing farm safety messages with school children across Wales," or contact your local county office for a copy.

**PARTNERIAETH  
DIOGELWCH  
FFERM CYMRU**  
**WALES  
FARM SAFETY  
PARTNERSHIP**

## Negeseuon allweddol: gweithio ar uchder

**Dylai unrhyw un sy'n gwneud gwaith ar doeau:**

- Fod wedi ei hyfforddi ac yn fedrus;
- Asesu a chynllunio'r gwaith yn briodol fel bod pobl yn cael eu cadw'n ddiogel;
- Ddefnyddio offer gwaith wedi eu cynnal a'u cadw'n dda ac addas;
- Ddilyn cynllun gwaith y cytunwyd arno (h.y. system waith ddiogel) a chael ei oruchwylio



# Having something to aim for can be really positive for your mental health

by Kate Miles, Charity Manager, The DPJ Foundation

THE first few months of the year is often when we reflect on the past and focus on the future. We often see an increase in calls to our helpline, sometimes because people realise they need to make a decisive change.

For me, I am not planning to create "new year's resolutions", but rather am resetting my goals. Having something to aim for can be really positive for your mental health: whether that is a particular turnover in your business, hitting a shearing tally or learning something new. But choosing well is key and not aiming for something unachievable as that can have the opposite effect.



My starting point in creating new goals has been to identify my values before then looking at whether my goals align. If they don't then why am I aiming for something that I don't even want? Having an emotional connection to goals is vital; knowing why they are important to you. This will serve as that reminder when you feel your motivation falter.

Most people will be aware of SMART goals: setting goals that are Specific, Measurable, Achievable, Realistic and Timely. This can be useful, but for someone like me who has a bit more of a relaxed approach to the big things in life, they aren't always motivating. That said, one of my most successful goal-based exercises involved losing weight in 3 weeks because I realised that I was 11 lbs too heavy to do a charity skydive! So sometimes having that fixed deadline and measurable progress can work well.

As well as thinking about what you can do, speaking to other people and sharing your goals can be helpful. It helps make you accountable, but you also may be able to learn from others. It can help with the "reality check" too of whether your goals are achievable within your timeframe. Having previously faced goals that were simply unachievable, I know just how demotivating and unhealthy that can be. Avoiding setting yourself up to fail is vital - this may mean adjusting your timescales rather than abandoning your goal completely.

With all this in mind, I have set myself a goal of getting in better shape physically and mentally in 2024. My steps towards success started with a chiropractor appointment, signing up for Run1000 and walking more through January as well as getting a health MOT at the Hywel Davies lorry.

I have blocked out one morning each week as catch-up time with no meetings to help combat feeling overwhelmed. However, sometimes life conspires to derail you - my plans have been knocked a little off course so far in 2024 due to health issues in my family, but this doesn't mean that I lose my goal, instead I have revisited my timetable to ensure I am not putting myself under unnecessary pressure. Whatever goal you set, good luck with it.

As well as thinking about what you can do, speaking to other people and sharing your goals can be helpful

## RABI's Click & Chat service provides immediate access to support

FIRST launched in October 2020, RABI's online wellbeing platform offers emotional support and online counselling to members of the farming community with no need for a referral. Available 24/7 on any device, the service allows users to seek support wherever they are and at a time and pace suitable to their own circumstances.

Today, the Click & Chat service continues to provide immediate and anonymous access to mental health support for farming people, including a platform specifically for young people aged 11-17. There are many tools available to all users, including farming-specific content, discussion boards, case studies, tips and articles, as well as a journal to record and track progress.

In addition, all users can access one-to-one counselling support from BACP (British Association for Counselling and Psychotherapy) recognised, qualified professionals through the Click & Chat function. Practitioners understand the unique issues and difficulties the farming industry faces and are trained in different counselling approaches, allowing them to meet individual needs and preferences.

RABI partnered with Kooth PLC to provide the platform. Kooth PLC specialises in creating online resources hubs to support positive mental wellbeing. For 15 years, they have been the UK's leading provider to the NHS in online mental health support. Their team of experienced counsellors create a safe environment and offer an integrated approach to positive mental health. Counsellors are available from 12pm-10pm Monday to

Friday and from 6pm-10pm at weekends. Drop-in and pre-booked sessions are available.

### What content will you find?

- Information and advice - including a range of self-care articles for you to download.
- An online magazine - an option for you to share your stories and experiences.
- Regular online forums - a chance to chat to others in a safe environment about issues affecting you and other topics you are interested in. These forums often act as a first step towards accessing further support.



- A messaging function - to contact the counselling team for information and advice.

### A safe space for young farmers

RABI's Big Farming Survey found that young farming people are the most likely to feel lonely, with 16% of farming people aged 16-24 reporting having no-one to confide in. To provide access to mental health support for this vulnerable demographic, and complement the adult site, Qwell, RABI also launched a wellbeing service for young farmers aged 11 to 17.







In addition to the features outlined above, this platform will include a daily virtual journal for users to log their thoughts and feelings, and a mini activities hub to inspire other creative ways to explore emotions. Activities include learning breathing techniques, creating a 'good mood' playlist and more.

The online magazine and discussion boards feature helpful tips and personal experiences from other young people. Content on the site is moderated and age restrictions are in place to keep children and young people safe.

### Using Click & Chat

Farming people can access both the adult and young person sites on any device via the portal at [bit.ly/RABI-clickandchat](https://bit.ly/RABI-clickandchat).

Joining and using the platform is free of charge, with the platform's services available to use as soon as the quick joining process is completed.

<p><b>Samaritans:</b> 116 123 or Welsh Language Line (Llinell Gymraeg): 0808 164 0123</p> 	<p><b>DPJ Foundation:</b> Call 0800 587 4262 / Text 07860 048799</p> 	<p><b>Mind Cymru:</b> 0300 123 3393 / <a href="mailto:info@mind.org.uk">info@mind.org.uk</a> / Text 86463</p> 	<p><b>FCN:</b> 03000 111 999</p> 	<p><b>RABI:</b> 0808 281 9490</p> 	<p><b>Tir Dewi:</b> 0800 121 47 22</p> 
---	--	---	--	---	--

## Join in with a coffee and cake event



We 'knead' your support to keep our lifesaving service running, join today and help us to raise some 'dough'.

Celebrate our 23rd birthday by signing up to our brand-new and exciting event, Coffee and Cake.



Get together with your family, friends or colleagues and host your very own Coffee and Cake event during the month of March. It's sure to tickle your tastebuds and raise vital funds for Wales Air Ambulance.



www.walesairambulance.com/coffeeandcake

RCN 1083645

## ANGLESEY

anglesey@fuw.org.uk

01248 750250

### Noson wybodaeth

Braf oedd gweld y ganolfan yn llawn ac i weld cynifer o aelodau ifanc yn ein plith. Diolch yn fawr i Gareth Parry o adran Bolisi UAC am ddod atom i gynnal y noson ac i Tom Jones am gadeirio. Cofiwch ymateb i'r ymgynghoriad erbyn y 7fed o Fawrth - mae llais pob un ohonoch yn bwysig!

*It was nice to see the centre full and that so many young members joined us. Many thanks to Gareth Parry from the FUW Policy department for hosting the evening and to Tom Jones for chairing. Remember you've got until March 7 to respond to the consultation - everyone's voice is important!*



### Derbyn siec



Pleser mawr oedd cael derbyn siec o £600 gan Ysgol Sefydledig Caergeiliog. Rydym yn hynod o ddiolchgar i'r ysgol am gynnal bore brechwast llwyddiannus gyda'r holl elw yn mynd tuag at Ambiwylans Awyr Cymru.

*It was fantastic to receive a cheque for £600 from Caergeiliog Foundation School. We are extremely grateful to the school for organising a successful breakfast morning with all profits going towards Wales Air Ambulance.*

### Trefnwch apwyntiad

Mae'n amser llewni'r ffurflenni SAF unwaith eto eleni. Mae'r cyfnod yn agor ar y 4ydd o Fawrth, felly ffoniwch y swyddfa ar 01248 750250 i drefnu apwyntiad.

*Once again, it's time to complete the SAF forms. The period opens on March 4, please call the office on 01248 750250 to book an appointment.*

## Upgrade to better.

Z Tag tissue sampling tags offer the best all-round product on the market.

- ✔ The sample taken is bigger
- ✔ The sample capsule is bigger and easier to handle

The process of attaching the tag to the ear requires less steps than any other. And as a bonus the pliers can be used for all other tags in the Z Tags family.

Better? We think so.

Scan the QR code to order a **FREE Pel Sample Pack!**

DEI WILLIAMS | 07507 611 195  
DEI.WILLIAMS@ROXAN.CO.UK

**DATAMARS Livestock™**

**Z TAGS™**  
DATAMARS

Scan the QR code to order a **FREE Pel Sample Pack!**

CEREDIGION

ceredigion@fuw.org.uk

01570 424515

Aelodau yn dweud eu barn

Cynhaliwyd cyfarfod ymgynghori Cynllun Ffermio Cynaliadwy cangen Ceredigion yng Nghlwb Rygbi Aberaeron ar nos Fawrth yr 23ain o Ionawr. Roedd y clwb rygbi'n llawn dop, gyda Gareth Parry, Dirprwy Bennaeth Polisi UAC yno'n cyflwyno. Cafwyd tipyn o drafodaeth a llawer o gwestiynau, a'r aelodau yn dweud eu barn am y Cynllun Ffermio Cynaliadwy.



**The Ceredigion branch's Sustainable Farming Scheme consultation meeting was held at Aberaeron Rugby Club on Tuesday evening January 23. The rugby club was packed, with Gareth Parry, FUW Deputy Head of Policy in attendance. There was considerable discussion and many questions asked, with members giving their views on the Sustainable Farming Scheme.**

Clwb 200

Ionawr/January

- 1 - Mr W H Jones, Trem y Wawr, Beulah
- 2 - Mrs M E Jones, Maes y Môr, Llanarth
- 3 - Mrs Roberts, Gelli Deg, Mydroilyn

Chwefror/February

- 1 - D. Jones, Bryn Ceiro, Ponterwyd
- 2 - Mrs Morgan, Pensarnau, Gorsgoch
- 3 - D J Jones, Cynfal, Heol Abaty, Pontrhydfendigaid

DENBIGH & FLINT

dinbychflint@fuw.org.uk

01824 707198

Two successful farm visits

We had a very busy day on Friday February 2 with two farm visits taking place. The first visit was held with Dr James Davies MP at Plas Bedw, Ruthin courtesy of Tim, Fiona and Nick Faire where we had a very interesting discussion highlighting the concerns and challenges that face the agriculture sector in Wales. The main issues discussed were matters including trade deals, budgets and funding along with the UK internal markets act.

We also had a very warm welcome from the Worthington family at Maes y Groes Farm in Cilcain in the afternoon where we were joined by Hannah Blythyn MS for the Delyn Constituency to discuss the farmer's concerns regarding the Sustainable Farming Scheme, implications of reduced farm support to the wider economy and the concerns regarding the proposing of a new National Park in North East Wales. Thank you to both families for the warm welcome.



**FUW officials with Dr James Davies MP at Tim, Fiona and Nick Faire's farm, Plas Bedw.**

**FUW Officials with the Worthington family and Hannah Blythyn MS on Maes y Groes Farm.**



GLAMORGAN

glamorgan@fuw.org.uk

01446 774838

Highlighting concerns

A strong representation of members turned out for the SFS meeting held in Glamorgan. Members highlighted concerns - Food security; Devaluation of



land from tree planting; Lack of support for new entrants; Lack of support for commoners from the get go; Lack of information on payment rates; Costs of complying, would payments increase with inflation; Time taken to complete office based requirements taking time from animal husbandry leading to welfare issues.

There was a general feeling in the room of a lack of transparency. For 7 years the Welsh Government has not had the best interests of farmers or those associated with the industry at heart. County Executive Officer Sharon Pritchard raised concerns: "Farmers are under so much pressure at the moment. The continuing TB Eradication programme combined with the new Agri-pollution laws is enough to test the strength of anyone. Although this has been on the table for 7 years, what wasn't considered, was what other issues the industry would be dealing with alongside this final consultation."

Big Farmland Bird Count



Our annual Glamorgan Big Farmland Bird Count was held on a Cardiff fringe farm this year. It was great to see we weren't the only ones braving the weather!

GWENT

gwent@fuw.org.uk

01873 853280

Lively debate at SFS meeting

Raglan market welcomed a large turnout of Gwent members to a presentation expertly given by FUW Head of Policy Dr Hazel Wright who engaged with members in a lively debate.

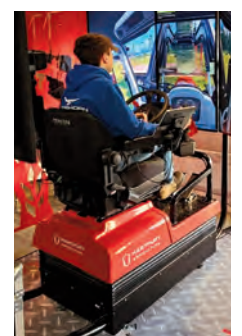


It was apparent there was little support for the scheme and lack of much needed support from the Welsh Government for the farming industry. Failure to provide any underpinning for food production was of main concern, followed by the failure to offer any tangible support for new entrants. The amount of land going out of agriculture making it even harder for young farmers to get a foothold. Losing productive permanent leys to trees and the inevitability of Wales relying on imported food that could be produced at home was highlighted many times throughout the meeting.

County Academi trip



Our first of many County Academi trips. This one was to Hartpury Argi Tech Centre for a business tech development workshop followed by a really informative farm walk. Our members also rolled up their sleeves for a trial on the simulators!



## CARMARTHEN

carmarthen@fuw.org.uk

01267 237974

## Trafod ymgynghoriad



Dydd Iau Ionawr 25 cynhaliwyd cyfarfod Ymgynghori Cynllun Ffermio Cynaliadwy, lle daeth nifer fawr o aelodau ynghyd gan gynnwys trwy Zoom.

*On Thursday January 25 the Sustainable Farming Scheme Consultation meeting was held, where a large number of members came together in person and via Zoom.*

## MEIRIONNYDD

meirionnydd@fuw.org.uk

01341 422298

## Cynhadledd Ffermio

Dechrau mis Chwefror cynhaliwyd Cynhadledd Ffermio ar fferm Sylfaen, Bermo drwy garedigrwyd Bryn a Sarah. Roedd yn gyfle i aelodau gael mwy o wybodaeth am y Cynllun Ffermio



Cynaliadwy. Yn bresennol roedd Mark Alexander, Dirprwy Gyfarwyddwr Adran Diwygio Rheolaeth Tir Llywodraeth Cymru; Gareth Parry, Dirprwy Bennaeth Bolisi UAC; Einir Williams, Cyswilt Ffermio a Mabon ap Gwynfor AS Plaid Cymru. Cafwyd diwrnod llwyddiannus iawn gyda nifer dda o aelodau yn bresennol.

*At the beginning of February, a Farming Conference was held at Sylfaen Farm, Barmouth, courtesy of Bryn and Sarah. It was an opportunity for members to get more information about the Sustainable Farming Scheme. Mark Alexander, Deputy Director of the Welsh Government's Land Management Reform Division; Gareth Parry, FUW Deputy Head of Policy; Einir Williams, Farming Connect and Mabon ap Gwynfor MS Plaid Cymru were present. It was a very successful day with a good number of members present.*

## Aelod newydd o staff



Wil Ifan Jones (chwith) ac Is Gadeirydd y Sir Gwion Rowlands.

Rydym yn falch iawn o gyhoeddi bod Wil Ifan Jones, o Bant Glas wedi cael ei benodi i'r swydd o Ddirprwy Swyddog Sirol. Mae Wil wedi dechrau yn y swydd ers canol mis Ionawr. Dymunwn yn dda i Wil yn ei swydd wrth iddo gychwyn ar adeg prysur iawn yn y swyddfa a bydd llawer ohonoch yn cael y cyfle i gwrdd ag ef dros y misoedd nesaf.

*We are happy to announce that Wil Ifan Jones, from Pant Glas has been appointed as Deputy County Executive Officer. Wil joined the team mid January. We wish Wil well in his role as he starts during a very busy time and many of you will have the opportunity to meet him over the coming months.*

## Brecwastau 2024

Diolch yn fawr iawn i bawb am eu cefnogaeth yn ystod Wythnos Frecwast Ffermdy ac i'r holl gyflenwyr a noddwyr am fod mor hael. Llwyddwyd i gasglu dros £2,300.

*A big thank you to everyone for their support during Farmhouse Breakfast Week and to all the suppliers and sponsors for being so generous. We managed to raise over £2,300.*

## MEIRIONNYDD

meirionnydd@fuw.org.uk

01341 422298

## Cyfarfod IDD

Trefnwyd cyfarfod gyda'r Athro Peter Fox a Geraint Davies, dau aelod o fwrdd Cyfoeth Naturiol Cymru yn ddiweddar. Cafwyd cyfle i ddangos y diffygion mawr yn y system ddraenio yn Nyffryn Dysynni, a'r angen am weithredu brys. Mae angen buddsoddiad sylweddol i wella rhai cloddiau a'r isadeiledd, a dyfnhau rhannau o'r afon. Diolch arbennig i Mabon ap Gwynfor am hwyluso'r ymweliad.



*A meeting was recently arranged with Professor Peter Fox and Geraint Davies, two Natural Resources Wales board members. There was an opportunity to show the major defects of the Dysynni Valley drainage system, and the need for urgent action. A significant investment is needed to improve some banks and the infrastructure, and to deepen parts of the river. Thank you to Mabon ap Gwynfor for facilitating the visit.*

## Carwch eich ffermwyr



Mae staff y swyddfa sirol wedi bod yn brysur yn addurno'r ffenestr ar gyfer Diwrnod Santes Dwynwen a Dydd Sant Ffolant. Penderfynwyd ein bod am hyrwyddo'r gwaith caled mae ffermwyr yn ei wneud wrth gynhyrchu cynnyrch o safon.

*County office staff have been busy decorating the window for St Dwynwen's Day and St Valentine's Day. We decided to promote the hard work that farmers do in producing quality produce.*

## Ffurflenni Taliad Sengl (SAF)

Rydym ar drothwy cyfnod prysur y ffurflenni unwaith yn rhagor, ac mae'r swyddfa sirol wedi ysgrifennu at yr holl aelodau i gynnig cymorth, ac yn annog pawb i gysylltu gyda'r swyddfa mor fuan â phosib i wneud apwyntiad. Bydd cymorthfeydd yn cael eu cynnal yn y Bala hefyd ar ddyddiadau penodol yn ystod mis Mawrth ac Ebrill. Cofiwch gysylltu ar 01341 422298.

*We are on the verge of another busy form filling period, and the county office has written to all members to offer assistance, and would like to encourage everyone to contact the office as soon as possible to make an appointment. Sessions will also be held in Bala on specific dates during March and April. Remember to get in touch on 01341 422298.*

## PEMBROKESHIRE

pembrokeshire@fuw.org.uk

01437 762913

## Join our monthly meetings

Are you interested in helping to shape the future of agriculture in Pembrokeshire and across Wales? If so, why not join us at one of our monthly meetings.

As the Welsh Government continues to develop the future shape of agricultural support in Wales over the coming months, alongside other important issues including the introduction of BVD legislation and a consultation on bTB cattle vaccine deployment, we are really keen to hear the views of our members on these important issues.

To find out more about how you can play a part in the discussions just contact the county office.



# GOVERNMENT GRANTS FOR HOME IMPROVEMENTS

*You do not need to be in receipt of any benefits to qualify for grant funding.*

Do not miss out... Grant Funding of up to **100%** is available for:



**Solar Panels for Free electricity**



**Air Source Heat Pumps / Electric Storage Heaters**



**Internal Wall Insulation and External Wall Insulation**

## How to qualify:

Somebody living in the property only needs to meet one out of the following three criteria:

1. Anyone living in the property that takes medication for a long term health condition (eg asthma, arthritis, diabetes, depression etc)
2. If the total income of the property is < £31,000 per year (for people who are self employed this is your profit, not your turnover)
3. If anyone in the property receives Working tax credit, Child tax credit, Universal Credit, Pension Credit, Housing Benefit or certain other benefits

We are able to help if you use either Oil, LPG, Wood, Coal or electric to heat your home. Unfortunately we are unable to help if the property has mains gas central heating.



Call today for more information

**0330 223 0333**



Funding is limited and is strictly allocated on a first come, first served basis. Any grant funding that you receive does not have to be re-paid.

The level of funding that you may receive is based upon the amount of carbon dioxide that will be saved by installing an energy saving measure. A survey of your property is necessary to calculate this funding. All funding offers are subject to survey. Please contact us to arrange a free, no-obligation survey.

More information on the Government's ECO funding scheme can be found on the OFGEM website:

<https://www.ofgem.gov.uk/environmental-programmes/eco/about-eco-scheme>

The Energy Company Obligation (ECO) is a government energy efficiency scheme in Great Britain to help reduce carbon emissions and tackle fuel poverty.

Further information can be found at [www.energysavinggrants.org](http://www.energysavinggrants.org)



## MEAT MATTERS

# Welsh Lamb and Beef take centre stage abroad and at home

by Laura Pickup, Head of Strategic Marketing and Connections, Hybu Cig Cymru/Meat Promotion Wales

THE last few months have been busy and indeed momentous for the farming sector here in Wales.

Whilst the industry tries to work out what its future is going to look like, our team took the promotion of PGI Welsh Lamb and PGI Welsh Beef to another level at Gulfood in Dubai, FoodEx in Tokyo and the American Meat Conference in Nashville.

Through the trade shows and other retailer engagement events, we told the amazing story of Welsh Lamb and Welsh Beef, highlighting why red meat from Wales is the jewel in our crown - and why it is a cut above the rest. Those visiting our stands left with a clear message: that our Welsh farmers have known for generations that if you look after the environment, the environment will look after you - resulting in a premium product.

Trade customers in these important export markets were given credible reassurance and proof that when they choose Welsh Lamb or Welsh Beef they are making the sustainable choice.

In addition, we provided tasting experiences for those who came to join us and allowed consumers to really enjoy the superior quality of our premium brands.

Additionally, HCC focused its attention on one of the most important ingredients we have in our production toolbox - grass - and hosted a grass



check workshop, as part of the Grasscheck GB work, at Penmaen Bach near Machynlleth, where Richard Rees and his brother Huw Llyr run a 90-hectare holding, grazing a flock of 400 Aberfield cross ewes to Abermax rams. The farm has been part of the Grasscheck GB initiative for 2 years already and has provided data and support that has been invaluable for the business.

Joining the workshop was consultant Andy King who shared an analysis of this season's farm grazing data and explored how it helps on farm decision making.

Our vision for the future of the red meat industry and our farmers here in Wales is one of profitability, efficiency and sustainability and HCC is proud to lead consistent activities at home and abroad to ensure that this vision is a reality for the red meat sector for generations to come.

***Mae tîm HCC wedi bod yn brysur yn hyrwyddo Cig Oen Cymru PGI a Chig Eidion Cymru PGI yn Gulfood yn Dubai, FoodEx yn Tokyo a'r Gynhadledd Cig Americanaidd yn Nashville. Yn ogystal â'r gweithgarwch dramor, mae HCC hefyd wedi rhoi sylw i'r adnodd pwysicaf sydd gyda ni yma yng Nghymru sef porfa, ac wedi cynnal gweithdy porfa, fel rhan o waith Grasscheck GB ym Machynlleth yn ddiweddar.***

## PROPERTY MATTERS

# Notice to quit following notice to pay

by Kathryn Williams, Director and RICS Registered Valuer, Davis Meade Property Consultants

WHERE a tenant, with a tenancy agreement governed by the Agricultural Holdings Act 1986, has failed to pay his rent on the due date, a landlord can serve a notice to pay.

Following two months from the service of the notice to pay, if the rent due remains unpaid, a landlord is entitled to serve a Case D Notice to Quit.

The notice to pay should only demand the rent that is due and not any other sums owing. Set-off is permitted if the tenant has a valid claim and therefore the landlord should consider whether set-off applies when determining the sum demanded.

The sum should be due and owing as at the date that the notice to pay is served. If the notice to pay is served before the sum demanding is owing, then the notice is not valid. If the notice is however dispatched before the date that the rent is due, but received and as such served, after the rent has become due then the notice is valid. The notice to pay should be in the prescribed form or a form substantially to the same effect, including the accompanying notes. The notice must clearly demand payment within two months, be given by or on behalf of the landlord and in the case of joint tenants be addressed to all of them and also served on all of them.

If the tenant can show that the landlord has been willing, in the past, to accept payment via a cheque, then as long as the cheque is posted on or before the due date, even if it is received later, the payment is deemed to suffice. Payment in this case will be deemed to have been made from the moment of posting as long as the cheque is honoured when presented.

The validity of a notice to pay cannot be disputed by a tenant. The tenant must either comply or run the risk of disputing the validity at the notice to quit stage. Failure by a tenant to defend his position at this stage will result in the notice to quit being upheld and the loss of the tenancy.

In light of the above, it is advisable for a tenant to seek advice in relation to a notice to pay as soon as the notice is received. It is best practice to comply with the notice to pay and to then seek to recover costs rather than running the gauntlet with the challenge in relation to a notice to quit. If the tenant is aware that the rental sum demanded is correct, payment should be made as early as possible and in a manner that ensures the payment is received and acknowledged by the landlord. If a tenant is posting the payment, accurate receipts and documentation to record the method of service should be retained.

***Pan fo tenant, sydd â chytundeb tenantiaeth a lywodraethir gan Ddeddf Daliadau Amaethyddol 1986, wedi methu â thalu ei rent ar y dyddiad dyledus, gall landlord gyflwyno hysbysiad i dalu.***

For further information / Am ragor o wybodaeth - Contact / Cysylltwch: Kathryn Williams, Davis Meade Property Consultants - [kathrynwilliams@dmpcuk.com](mailto:kathrynwilliams@dmpcuk.com)



## MERCHED MEWN AMAETH

# "Araf bach mae mynd ymhell"

gan Tegwen Morris, Cyfarwyddwraig Cenedlaethol, Merched y Wawr

FE welodd mis Chwefror amryw o Bwyllgorau Cenedlaethol Merched y Wawr yn cyfarfod - ac oedd mi oedd yna bryderon niferus ar draws Cymru. Ein dyletswydd fel mudiad ydyw gweithredu ar ran ein haelodau gan drefnu cyfarfodydd, llythyru, lobbio a gobeithio cael atebion. Mis diwethaf fe gyfeiriais at y ffaith "Mae yn drist fod angen brwydro am hawliau cyfartal o ran ein hiaith a thegwch wrth ddelio gyda'r banciau." Mae yn debyg fod angen brwydro am lawer mwy erbyn hyn.

Mae dyfodol Cefn Gwlad Cymru yn eithriadol o bwysig o ran dyfodol a chynnydd yr Iaith Gymraeg, ein diwylliant, ein treftadaeth a'n dyheadau am ddyfodol gwell i'n plant a'n pobl ifainc.

Mae'r ffaith fod Barclays yn cau bron pob un o'i changhennau yng Nghymru, fod y llywodraeth yn ystyried newid tymor ysgol fel nad oes gwyliau adeg y Sioe Fawr yn Llanelwedd, fod trethi cyngor yn codi ym mhobman - a'r gwasanaethau yn lleihau yn dyst o'r gofidiau sy'n ein hwynebu.

Mae'r angen dybryd am gynyddu'r nifer o ddeintyddion, meddygon, arbenigwyr, gweithwyr cymdeithasol a gofalwyr yn amlinellu pa mor fregus



ydyw'r sefyllfa mewn sawl ardal yng Nghymru.

Mae ein pryderon am ddyfodol leoliadau Canolfannau'r Ambiwllans Awyr yng Ngogledd a Chanolbarth Cymru hefyd yn ofid gwirioneddol i amryw sy'n cefnogi'r elusen werthfawr hon.

Mae yn bwysig fod llais y bobl yn cael ei gynrychioli ac mae yn bwysig fod yna ddyfodol i Gefn Gwlad Cymru. Mae dyletswydd arnom i ddiogelu ein cymunedau a cheisio ein gorau i wneud gwahaniaeth.

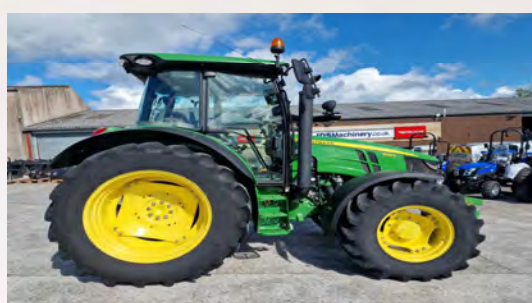
Diolch i'n holl aelodau sy'n amlinellu'r anghenion lleol ac yn ymddiried ynom i weithredu ar eu rhan. Cydweithio ydyw'n nod ac "araf bach mae mynd ymhell".

Cyngerddwn fel gwnaeth y porthmyn gynt trwy ddiogelu ein henwau cynhenid Cymraeg, ein hiaith a'n diwylliant.

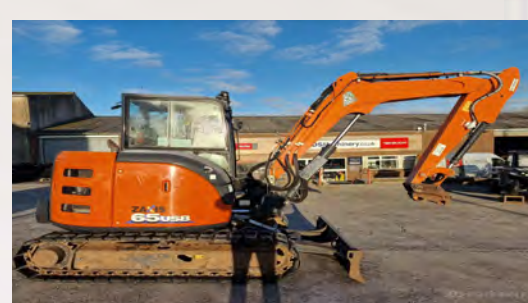
***A number of National Committees were held during February and numerous concerns were highlighted, and as an organisation it is Merched y Wawr's responsibility to organise meetings, correspond, lobby and hopefully get some answers.***



Fendt Farma 309 Turbomatik. G reg. 4000 hours approx. Rare tractor. Nice to drive.



John Deere 5125. Year 2018. Hours 942 Approx. 3 Spools, Front weights. Low Hours. Mint Condition



Hitachi Zaxis 65 USB. Year 2020. 2100 hours approx.. New track pads, Hyd hitch. Very Good Condition



Valtra T234A. Year 2018. Hours 2950 Approx. 4 Spools. Front Links. Excellent Condition throughout.



Valtra T254 Versu. Year 2020. Hours 2763 Approx Smart Touch Screen. GPS and Auto Steer Ready. Electric Spools. Front links and PTO



Solis 50RX. Year 2020. Hours 97 Approx. 50hp. Manual Transmission 2 Rear Spools. 2WD/4WD. ront Weights



Takeuchi TB228. Year 2015. Hours 2514 Approx. Manual, semi quick hitch. Three buckets. Very good condition.



Takeuchi TL12R2. Year 2018. Hours 225.7. 5.7" Colour Display, Rear Camera..Suspension Seat Loading Bucket. Excellent Condition



Benford 3T Swivel Dumper. All in working order. Good condition for year.



TMK Tree Shears in stock.



Nugent Plant Trailers 2.7 ton - 3.5 ton, In stock.



Socomec Hydraulic Breakers In Stock.



Herbst Trailers In Stock.

# Wales YFC make an impact at The Senedd

ON January 10 2024, members, officials, officers, and supporters from across Wales travelled down to Cardiff to launch the Wales YFC Impact Report at The Senedd.

The County Organisers and Chairs for Gwent, Montgomery, Radnor, Ynys Môn, Ceredigion, Carmarthenshire, Glamorgan, Brecknock, Meirionnydd and Pembrokeshire all attended and put on a colourful display to showcase all the work and events that go on in their counties throughout the year. Members of Senedd walked around the displays and spoke to different counties.

After attendees enjoyed a delicious buffet sponsored by Forest Arms, Brechfa attendees made their way down to the foyer for the main launch. Samuel Kurtz MS opened the evening with a speech about the importance of the movement, shortly followed by a video that summarised the YFC year highlighting all the events, activities and competitions that go on throughout the year. Wales YFC Chair Rhys Richards then took to the stage to speak about the Impact Report.

Later in the evening, Senior Member of the Year, Endaf Griffiths from Ceredigion YFC transformed into a talk show host as he interviewed Cennydd Jones, Sian Eleri, Leanne Davies and Kate Miles about their experience of the young farmers movement and what skills they use from their time as members in their professional roles highlighting the four key pillars from within the report.

- 1) Supporting and growing the Welsh language and culture.
- 2) Supporting, enabling and being the heart of our local rural communities.
- 3) Building the skills and employability of our members through events, competitions, training, and development.
- 4) Supporting the health and wellbeing of our members by giving them a place to be themselves, meet friends and try new things.

President of the Senedd, Elin Jones joined the panel on stage and delivered kind words about the movement.

The evening was closed with a beautiful rendition of 'Cae o Ŷd' by



The full Impact Report is available on the YFC website [www.yfc.wales](http://www.yfc.wales)

Penybont YFC from Carmarthenshire, (pictured above), who had won the One Voice Party Competition at the 2023 Wales YFC Eisteddfod in Ynys Môn.

Wales YFC would like to thank Samuel Kurtz MS for hosting the launch, Forest Arms, Brechfa for sponsoring the launch, Samkat for producing the report, all the members that took part in the presentation, Elin Jones for her kind words, all the YFC counties that attended and the Members of Senedd and partners of Wales YFC that supported the launch.



Samuel Kurtz MS opening the launch.



Endaf Griffiths, Senior Member of the Year interviewing Kate Miles from the DPJ Foundation.



Elin Jones, President of the Senedd delivering kind words about the movement.

## Upcoming Schemes

Scheme	Summary	Window
<b>Woodland Creation Planning Scheme</b>	The Woodland Creation Planning Scheme offers grants of between £1,000 and £5,000 to develop plans for new woodland creation. After a plan is successfully verified by NRW, it will be eligible for Welsh Government funding for tree planting and fencing (Woodland Creation Grant). More information: <a href="https://www.gov.wales/woodland-creation-plan-scheme">https://www.gov.wales/woodland-creation-plan-scheme</a>	Open throughout the year (subject to budget)
<b>Small Grants - Woodland Creation</b>	Small Grants - Woodland Creation is a scheme aimed at farmers and other land managers to encourage planting of small areas of trees on land which is agriculturally improved or low environmental value in Wales. Funding is available for tree planting to create shelterwoods, alongside watercourses, and in field corners or small fields for stock shelter, biodiversity and woodfuel. Small Grants - Woodland Creation also offers 12 years of payments for Maintenance and Premium payment in respect of the new planting. Livestock and deer fencing and gates for public access are also included. The application process provides a way of ensuring planting proposals meet the UK Forestry Standard (UKFS) requirements without the need for verification of a woodland creation plan by NRW. Funding is available for planting areas between 0.1ha and 1.99ha. More information: <a href="https://www.gov.wales/small-grants-woodland-creation">https://www.gov.wales/small-grants-woodland-creation</a>	4th March 2024 - 19th April 2024
<b>Small Grants - Efficiency</b>	The Small Grants - Efficiency scheme is a capital scheme designed to help farmers in Wales to improve the technical, financial and environmental performance of their farm businesses. The objectives are to increase on-farm investment, increase technical performance, increase on-farm production efficiencies, increase on-farm resource efficiencies and enhance the use of technology to improve management decisions. The Small Grants - Efficiency scheme supports capital investments in equipment and technology that have been pre-identified as offering clear and quantifiable benefits to your farm business. The capital items have been specified, along with a referenced cost for each item. More information: <a href="https://www.gov.wales/small-grants-efficiency">https://www.gov.wales/small-grants-efficiency</a>	6th March 2024 - 16th April 2024
<b>Woodland Creation Grant</b>	The Woodland Creation Grant grant provides financial support for creating larger areas of woodland or small areas not suitable for the Small Grants - Woodland Creation Scheme. The minimum area of land for an application is 0.25ha. There is no maximum area. The scheme provides funding for the planting of trees and the installation of fencing and gates. It also offers 12 years of maintenance and premium payments (compensation for loss of agricultural income). Planting trees under the scheme will not affect Basic Payment Scheme (BPS) payments or land eligibility. More information: <a href="https://www.gov.wales/woodland-creation-grant">https://www.gov.wales/woodland-creation-grant</a>	4th March 2024 - 22nd November 2024

# Soil Fertility Services Ltd

## DAIRY ~ BEEF ~ SHEEP

**ALL stock need mineral-rich grass but it needs to be IN BALANCE.**

**What is YOURS like?**

Your soil **REALLY IS** your most important asset.

As for all crops, soils need their mineral content to be **IN BALANCE**.

An excess of one element will cause a deficiency of another.

**To find out your balances you need a proper Soil Fertility Audit.**

**This is MUCH MORE than a soil test** - A low pH might not be the result of a low Calcium level but an imbalance somewhere else. Your soil minerals need to be in balance.

**What about Arable farming? Not only Cereals but Maize, Potatoes, Veg, Fruit...**

The same ethos applies, **ALL SOILS** need to have minerals in balance or problems arise.

We have worked with Welsh farmers for 25 years - You may have seen us at the RWS

**We are currently running a *SPECIAL OFFER* -**

**FREE OF CHARGE**

Detailed Soil Fertility Audit/Forage analysis **PLUS** interpretations.

Unlike you having sent off a sample, we won't just send the results to you;  
we will talk you through the results and explain what they mean.

Excess's, deficiencies, availabilities, lock-up's...

We will even send you a sampling pack with bags, instructions and pre-paid  
bag for returning the sample to us.

Get in touch now and ask for more information Ref: FUW0124

T & C's apply



office: 01366 384899

email: [info@soilfertilityservices.co.uk](mailto:info@soilfertilityservices.co.uk)