



Y TIR

llais ffermwyr Cymru

the voice of Welsh farming

£2.50



Meet FUW Insurance Services Ltd Claims team

page 8



Critical issues highlighted during virtual RWAS

pages 12 & 13



Farm safety - is it worth taking the risk?

page 20

Welsh and UK Governments must implement range of measures to tackle rural housing crisis



DURING a special FUW webinar held during the virtual Royal Welsh show speakers from England and Wales highlighted a range of actions the Welsh and UK Government should take to tackle the acute rural housing crisis.

The webinar, which was chaired by Farmers Guardian Chief Reporter Abi Kay, heard from Cumbria MP Tim Farron; Gwynedd County Council Leader Dyfrig Siencyn and Nefyn Town Council leader Rhys Tudur.

The Covid-19 pandemic has accelerated pressures on rural housing across the UK, causing rapid house-price inflation and placing rural houses even further beyond the financial reach of coastal and agricultural communities.

Former Liberal Democrat party leader Tim Farron told the webinar: "We can't deny the evidence of our eyes, that excessive second home ownership in a community kills the community. I've talked to a range of estate agents around Cumbria, the best guess is something like 60-65% on average to up to 80% of all house sales in the last 15 months have been to the second home market."

"But what's had a real impact on the housing tenure in the last 12 months, in particular the last 5 or 6 months, has been this cascade from the private rented sector into the holiday let and in particular the Airbnb sector. So you can imagine in South Lakeland there are already a tonne of holiday lets to start off with. And that number has risen by 32% in one year."

Dyfrig Siencyn, who is also co-chair of the Welsh Local Government Association (WLGA) Rural Forum, made it clear that the same pressures were being seen in Gwynedd: "We've seen a significant increase in the number of second homes. In Gwynedd we are at around 11% second home ownership out of the whole house stock, the highest percentage in Wales."

He added that Airbnb's have been a big factor in the increase in house prices and that people were buying a house as an investment to let for short term lets.

"It's very hard to know how many of them there are, but let's not forget that at the same time the number of homeless people has also increased and now affects nearly 500 people in Gwynedd," he added.

Rhys Tudur, a solicitor who as well as being leader of Nefyn Town Council also campaigns for Hawl i fyw Adra ['Right to live at home'] described the situation as "catastrophic", saying "House after house is going out of the reach of local people...We know we would never get a detached house on the seafront [in Nefyn], however there's now no hope of getting many houses in our communities anywhere...even terraced houses are becoming out of our reach."

Mr Tudur told the audience that a two-bedroom house without a garden had recently been sold in his home town for a quarter of a million, while a bungalow on a new estate was being sold for £650,000 which was well beyond what the vast majority of local people could afford. "That's the pattern we are seeing. Terraces going. Houses in the middle of villages. Houses that are the hearts of villages," he added.

Continues on page 2

"We can't deny the evidence of our eyes, that excessive second home ownership in a community kills the community."

| cm | Spring (kg/ha) | Summer (kg/ha) |
|----|----------------|----------------|
| 15 | 3,250 | 3,800 |
| 14 | 3,150 | 3,740 |
| 13 | 3,010 | 3,650 |
| 12 | 2,880 | 3,350 |
| 11 | 2,750 | 3,150 |
| 10 | 2,650 | 3,050 |
| 9 | 2,550 | 2,950 |

FREE SWARD STICK

If you missed FUW's webinar:

Tackling the Rural Housing Crisis

it's available to watch on the members section of the website - www.fuw.org.uk/login



Hear about the problems faced by communities in Wales and England and explore solutions that are more imaginative than simply building more houses

#FarmingMatters

#AmaethAmByth

FUW UPDATE

Trade, safety and holiday homes

by Guto Bebb, FUW Group Managing Director

WITH the Royal Welsh cancelled for a second year running we were unable to engage in the great Welsh past-time of complaining about the weather which we would have done with Show week temperatures in excess of 30 degrees.

However, the virtual Royal Welsh was a decent effort to bring some of the issues of the day to the fore and I was pleased to see both the Union and FUWIS involved in numerous virtual events. In particular the Union hosted a very important discussion about the impact of holiday homes on the rural housing market with speakers such as Tim Farron, the Liberal MP from the Lake District and others from closer to home, highlighting an issue which is a concern to all of us who work in rural parts of the UK. It goes without saying that the linguistic and cultural implications of the issue in a Welsh context make the current price surge of the past eighteen months even more of a pressing issue. In Wales farming and agricultural related economic activity is central to the preservation of Welsh as a community language and I was pleased to see the Union engaging constructively on this important issue.

A second seminar we held was on farm safety and it was a sobering experience. It really is unacceptable that we have, on our farms here in Wales, some of the worst mortality rates of any industry in the United Kingdom. Over the last year 34 deaths occurred on British farms with seven of those in Wales - more than 20% of the total. This is far more than we should tolerate. There is no simple response to this issue but I was pleased to see the Union and FUWIS engaging pro-actively with the Health and Safety Inspectorate and the Welsh Farm Safety Partnership at our virtual seminar which remains on our website. We often hear people complaining about "health and safety gone mad" but in truth the only madness is our willingness to tolerate such a level of work-related mortality on our farms.

Finally, I was pleased that our idea for a Welsh Select Committee enquiry into the

impact of trade deals on Welsh family farms and the rural economy had been supported by our elected representatives. The first session, which included evidence from our Head of Policy, Nick Fenwick, was excellent. Stephen Crabb MP is a good Chair and the members are much improved following my departure from politics! However, the real credit must go to the committee clerks who sought out such eminent trade experts as Sam Lowe, Senior Research Fellow at the Centre for European Reform and Dimitry Grozoubski, the Executive Director of the Geneva Trade Forum and a former Australian Trade negotiator.

Their evidence remains available on the Parliamentary website and is worth an hour of your time. It was a damming session. The motives of the Government in seeking such an early deal with Australia was described as a case of "expediency over substance" whilst the creation of a deadline based on the Australian Prime Minister's visit to the G7 was described as "not a forward-thinking way to do policy".

All in all, the evidence of these two experts was both enjoyable and depressing. Enjoyable because the breadth and depth of their policy expertise was apparent. Depressing because the more I listened the clearer it became that the needs of Welsh and UK agriculture had played second fiddle in this deal to a photo shoot at the fringes of the G7.



Continued from page 1

Mr Farron said patterns were similar in his constituency, where, for example, the town of Coniston had around 750 properties but around half are not lived in all year round, causing impacts on the number of children attending the local school, the viability of local bus services, pubs, post offices and other services.

"People who could have never got themselves onto the social housing list, but couldn't afford to be other occupiers, cling on in the community with a private rented property. But typically they are being turfed out now the eviction ban is over. The building they thought was their home is now on Airbnb for £800 a week. Maybe I can make the comparison with the Highland Clearances - wealthy people clearing out local people."

It's time for a radical set of proposals that will tackle this problem...The planning laws need to be changed. Second homes should be classed as a separate use. Give the power to say no to those applications," he added.

Mr Tudur highlighted the need for additional powers such as those that exist in Switzerland and elsewhere in Europe, where protections are in place to help local residents, saying: "We can't build ourselves out of this emergency. You also don't want too much building going on in rural areas. We need to be able to restrict these purchases.

"In some places in Europe such as ski resorts those detached houses cannot be second homes. What people will buy for a second home or holiday home is a flat ...We almost have the opposite situation here, where we couldn't dream of a detached house, and not even a semi-detached one anymore."

Mr Siencyn agreed that urgent action was needed, highlighting the rural housing proposals published in the WPGA Rural Manifesto launched in January this year.

"I am concerned that the current government does not have the understanding or sympathy with rural communities. They must have policies specifically aimed at the countryside," he added.

In response to a question on National Parks, all speakers agreed that they often added to the pressures on rural housing and rural communities.

Mr Farron said that villages which in 2016 had become part of the extended Yorkshire Dales National Park had become more expensive places to live, adding "We shouldn't be so naive as to recognise this will not be a consequence if you build that invisible wall around them."

He suggested that the third relegated priority of National Parks, to conserve and look after the economy and the community of the local area, should be made the top priority for National Parks, saying "What's the point of protecting the heritage of the landscape and the place if you allow the community to go to rack and to ruin, and it only becomes a playground for those that have plenty."

If we have published anything that is factually inaccurate, please contact the editor on 01970 820820 at ytir@fuw.org.uk or at FUW, Llys Amaeth, Plas Gogerddan, Aberystwyth, Ceredigion, SY23 3BT and once verified we will correct it here as soon as possible.

South Wales Evening Post is part of Trinity Mirror North West & North Wales Ltd, a subsidiary company of Reach PLC, which is a member of IPSO, the Independent Press Standards Organisation. We adhere to the Editors' Code Of Practice as enforced by IPSO, who are contactable for advice at Independent Press Standards Organisation, Gate House, 1 Farringdon Street, London, EC4M 7LG. Website: <http://www.ipso.co.uk> Telephone: 0300 123 2220; email advice@ipso.co.uk

If you have a complaint concerning a potential breach of the Code of Practice, we will deal with your complaint directly or IPSO can refer your complaint to us. Please go to <https://www.reachplc.com/how-to-complain> where you can view our Complaints Policy and Procedure. A "How To Complain" pack is also available by writing to the Legal and Compliance Department, Reach PLC, One Canada Square, Canary Wharf, London, E14 5AP.



JOB VACANCY / SWYDD WAG

FUW Group Communications Officer / Swyddog Cyfathrebu Grŵp UAC

Salary / Cyflog: £21k

We're looking for an enthusiastic, news savvy person with a passion for farming and rural life to join the communications team.

For more details contact: anne.dunn@fuw.org.uk

Rydym yn chwilio am berson brwdfrydig, sydd ag awch am stori, ac sy'n angerddol am ffermio a bywyd gwledig i ymuno â'r tîm cyfathrebu.

Am ragor o wybodaeth cysylltwch â: anne.dunn@fuw.org.uk

Sut i gysylltu gyda Y Tir / How to contact Y Tir

Golygydd/Editor: Nia Davies-Jones - ytir@fuw.org.uk

Pennaeth Cyfathrebu/Head of Communications: Anne Dunn - anne.dunn@fuw.org.uk

Pennaeth Marchnata/Head of Marketing: Meryl Roberts - meryl.roberts@fuw.org.uk

Swyddog Cyfathrebu'r Iaith Gymraeg/Welsh Language Communications Officer:

Angharad Evans - angharad.evans@fuw.org.uk

www.fuw.org.uk



Welsh landscapes and communities cannot be allowed to become a dumping ground for the sins of the world

by Glyn Roberts, FUW President



LAST month was a busy one for the FUW team - amongst the many stakeholder meetings and day-to-day activities, they also arranged for us to have an excellent presence at the virtual Royal Welsh Show.

We hosted a variety of webinars covering the topics of rural housing, climate change, mental health, digital connectivity and farm safety - each and every one of them touching on crucially important issues for our industry, and if you weren't able to join them during the show week, they are also available for you to watch in the members section of the FUW website or on the show website. Read more about the webinars on pages 12 and 13.

As part of our political engagement work, which stretches far beyond the usual confines of show week, I recently spoke at the first meeting of the newly formed Senedd Committee for the Economy, Trade and Rural Affairs.

It was an excellent opportunity to highlight that while the scale and number of challenges faced by Wales is immense - not least in terms of the environment - the people of Wales should be at the heart of the work of the Senedd: The people who make our economies and communities tick. The people who elected our Members of the Senedd and make Wales what it is.

The interests of the people of Wales are often lost in a mist of heady aspirations set out in lengthy Government policy documents - aspirations we may all agree with, but nevertheless should sit alongside the welfare of people and families, and certainly not obscure or inhibit those interests.

For the 53,000 people who work on Welsh farms and the businesses they support, a key concern is the impact of the Welsh Agriculture Bill which will be published by the Welsh Government and considered by the Senedd over the coming years.

The Welsh Government's Agriculture White Paper published in December last year suggests that the Bill will merely replicate one-dimensional Defra objectives that focus on environmental 'public goods'.

Farmers of course recognise that enhancing the environment needs to be a strategic objective for Wales, but to date we have not seen the preservation and enhancement of our family farms, agricultural businesses, rural employment and culture given anything like equal status as a key strategic goal alongside the delivery of environmental public goods.

To borrow a phrase used by our First

Minister, protecting the wellbeing of our rural families and communities cannot be left to 'vapid optimism' - it must be delivered by design.

As Nefyn Town Council Leader Rhys Tudur said during our 'Tackling the Rural Housing Crisis' seminar, 'Natural Resources Wales' is charged with protecting our natural resources, but we need a 'Cultural Resources Wales' to protect the very people who make Wales what it is.

He was referring to the devastating impact on communities of second home ownership and similar effects accelerated by the pandemic, but with speculation about future public goods payments driving sales of Welsh farmland for tree planting, a 'Cultural Resources Wales' would surely highlight the devastation afforestation has caused in the past - an issue which was discussed during our 'Producing food and looking after the environment' seminar.

A central purpose of a domestic Welsh agricultural policy should be to mitigate outside effects that are beyond our control.

The impacts of Brexit and damaging trade deals are the most prominent of these, as they fall largely outside the powers of the Welsh Government and the Senedd.

The Welsh Affairs Committee recently heard evidence from the FUW and others about just how damaging the UK-Australia trade deal agreed in principle could be, and supporters of the UK Government who expected the trade experts who gave evidence after the FUW to rubbish these were in for a big disappointment.

Former Australian trade negotiator Dmitry Grozoubski told the hearing that the UK Government's main goal appeared to be to announce a trade deal in the week of the G7 conference.

He described this as "...not a very forward-thinking way to do trade policy" with an Australian negotiating team that Sam Lowe, of the Centre for European Research told the Committee is a "well oiled" machine whose objectives are "...market access, market access, market access; let's knock down tariffs all over the world and make it easier for our farmers to sell there."

Mr Grozoubski added: "Welsh farmers are right to be concerned in the long term...when you eliminate tariffs or you raise quotas to hundreds of thousands of pounds, then, if that quota were to be filled or if there were a 10,000% increase in Australian lamb to the UK, I think that would be devastating for Welsh farming. This deal means that that is now a theoretical

possibility in the sense that the UK Government can no longer use tariffs to prevent it."

If the Welsh Government and Senedd fail to place the enhancement and protection of our food producing families and those businesses, communities and environments which rely on them as a central strategic objective in future policies, this will not only tie our hands when it comes to mitigating the impacts of such trade deals, but is also likely to exacerbate these.

Addressing climate change and reversing environmental damage will quite rightly be a focus for the new Senedd and Welsh Government, but as a modern devolved nation it is essential that we take a mature, outward-looking view in what can be a ruthless global trading environment.

This is something the UK Government seems to be negligently oblivious to as it

hands over market access to foreign negotiators who must be laughing all the way to the bank, and prioritises free trade idealism, short term political expediency and news soundbites over the UK's long term interests.

Our Welsh landscapes and communities cannot be allowed to become a dumping ground for the sins of the world, while greater volumes of food produced to lower environmental and animal health and welfare standards displace our own food production systems - systems upon which a vast range of Welsh plant and animal species and our distinct culture and landscapes rely.

Mae'r golofn yma yn Gymraeg ar wefan UAC - Newyddion - Newyddion Y Tir: "Ni ellir caniatáu i dirweddau a chymunedau Cymru ddod yn dir ar gyfer dadlwytho pechodau'r byd," neu o'ch swyddfa sirol leol.

"The people of Wales should be at the heart of the work of the Senedd: The people who make our economies and communities tick."






John Deere 6155R,
StarFire Guidance System,
Year 2019
Hours Approx 3441



Takeuchi TB260,
Year 2016,
Hours Approx 3738



Massey Ferguson 5610 complete
with front loader. Under 1200 hrs.
Exceptional condition.



Valtra N154 Active with front
loader, good condition, approx
hours 620.



Yanmar Vio27-6, 2020 Year,
Hours approx 391, Comes with
quick hitch and buckets.



Valtra N154 with loader,
Approx 765 hours.
Great Condition.



Massey Ferguson 5465 Dyna 4,
Hours approx 5709,
New Tyres.



TMK Tree Shears In Stock.



Doosan DX140 LCR,
Hours Apporx 3981,
2015 Year,
Comes with quick hitch.






Phone: 01559 384886 Fax: 01559 384814 Email: sales@jdsmechanry.co.uk

Montgomeryshire farmers outline free trade deal concerns in meeting with Minister

FARMERS from Montgomeryshire and Farmers' Union of Wales officials have met with local MP Craig Williams and UK Minister for Trade Policy Greg Hands to reinforce the industry's concerns about the free trade deal with Australia.

Speaking after the virtual meeting on Monday July 19, FUW Montgomeryshire Livestock, Wool and Marts committee delegate Mark Williams, said: "I thank both Craig Williams and Greg Hands for discussing our concerns around the free trade deal with Australia. It was a great opportunity for our members to reiterate our concerns very clearly."

Australian farms, Union officials highlighted, benefit from significant advantages in terms of economies of scale: The average farm size in Australia is 10,700 acres compared with an average Welsh farm size of 125 acres, while 65% of Australian cattle farms have between 100 and 400 head of cattle, and farms of over 5,400 head of cattle account for 30% of the country's beef cattle. This compares to an average Welsh herd size of around 30.

"The proposed UK-Australia trade deal would see an immediate nine-fold increase in Australia's beef import quota, rising to the equivalent of a 29 fold increase in year ten, and a 45 fold increase in year 15. For lamb, there would be an immediate doubling of import quotas, rising to the equivalent of a six fold increase in year ten and a nine fold increase in year fifteen," said Mark Williams.

The UK Government's own figures estimate the economic benefits to the UK of such a deal are between 0.01% and 0.02% of GDP over fifteen years - an average of just 0.001% of UK GDP a year - and that UK exports to Australia will increase by just 7.3% compared with increases of imports from Australia of 83.2%.

"It is therefore clear that while the economic benefits of the proposed deal are close to zero for the UK as a whole, they are likely to be severe for Wales' farming communities and the industries that rely on them, while also undermining our food security, and global animal health and welfare and environmental standards," he added.

Such adverse impacts, Mr Williams said, would of course be exacerbated by further trade deals with other major agricultural producing nations - deals for which the Australia deal will set a precedent.

FUW Policy Officer Teleri Fielden, (pictured right), added: "The importation of such food

products is also likely to compromise access to our main export markets on the continent, as the EU seeks to ensure the UK does not become a back door for Australian imports by raising the post-Brexit non-tariff barriers that have already led to a halving of UK food exports to the EU in the first quarter of 2021.

"The value of developing existing and seeking new markets for all UK products, including our food, is of course recognised, but this must not be done at the cost of the long term viability of Wales' food and farming industries, the environment and animal health and welfare standards."

Former Australian trade negotiator and founder of explaintrade.com, Dmitry Grozoubinski, told the Welsh Affairs Select Committee recently that "...it does feel a little bit like the goal here was to have an agreement in principle during Australian Prime Minister Morrison's visit at the G7, which is an objective but not necessarily a very forward-thinking way to do trade policy" and that "Welsh farmers are right to be concerned in the long term...The Government will have given away their ability to use tariffs to protect them against... [squeezing domestic producers or replacing EU imports]...as a very simple example, Australian exports of beef to the US have gone up 627% in the last 20 years. If you looked at the numbers 20 years ago, Australia was a nonentity in the US market; it is now hovering somewhere around third by value and very high on tonnage..."

The Union has launched an online petition tool to allow members and the public to contact their local Member of Parliament, voicing their concerns about the free trade deal. The lobbying tool can be found on the members section of the website: www.fuw.org.uk/login



Upcoming EOI window details

| Scheme | Summary | Window closes |
|--|--|----------------------|
| Dŵr Cymru Welsh Water free pesticide disposal scheme relaunched | Dŵr Cymru - Welsh Water has relaunched its free pesticide disposal scheme for farmers & growers, gamekeepers, foresters and land managers in Wales as part of the PestSmart project. The aim of the scheme is to reduce the risk posed by unwanted, out of date or revoked registered plant protection products and undiluted sheep dip. Those who believe they are eligible need to register an interest before 5pm on August 9 2021, however, it will be a first come, first served basis. An appointed contractor will then get in touch to confirm which products are eligible for collection. Participants that took part in 2019 and/or 2020 can take part again in 2021 and dispose of 30L/Kg of eligible products for free. To register via telephone with a member of the PestSmart team, please call 01443 452716 | 9 August 2021 |
| Welsh Government Woodland Investment Grant Scheme | The Woodland Investment Grant (TWIG) Scheme is now open for applications from landowners and those who have full management control of land. The scheme provides 100% grants to enhance and expand existing woodlands and to create new woodlands as part of the future 'National Forest'. The woodland must have an element of public access or community engagement to be eligible and funding through this grant can be combined with Glastir Woodland Creation or private investment. Eligible capital items range from the purchase of trees, site preparations such as fencing, tools and small scale equipment for project delivery i.e. consultancy fees. Applications must be made by August 27 2021 via RPW Online and necessary consents or permissions, such as environmental impact assessments or planning permission, need to be in place before applying. The maximum grant award per application is £250,000 and the minimum is £10,000. The capital budget for this grant window is £2.5 million, plus a revenue budget of £250,000. All project works and costs incurred must be completed by March 31 2022. Further information can be found on the Welsh Government website under Rural Grants and Payments | |

Steel tariff decision prompts call for food and farming protection



THE FUW says the common sense decision to prolong import limits on steel products should trigger somber reflection over the impact of trade deals that open UK markets up to cheap food imports.

The UK Government announced on Wednesday June 30 that it would extend measures that defend the steel industry against cheap imports of certain types of steel, particularly from China.

The steel industry had described the original plan to remove tariffs as "utter madness", warning that import surges would be devastating for the industry in the UK.

Referring to the trade deal recently agreed in principle with Australia and plans to sign similar deals with other countries and trading blocs, FUW President Glyn Roberts, (pictured above), said: "The phrase 'utter madness' also applies to moves that would open up our market to cheap food produced to lower standards.

"Such deals would be particularly devastating for rural areas where jobs relating to farming

and agricultural supply chains make up a large proportion of the workforce and an invaluable contribution to our society and culture."

Mr Roberts said that such trade deals also threatened the UK's food security.

"Signing trade deals that will increase our reliance on food imports just twelve months after the pandemic exposed our vulnerability to sudden changes in global food supply systems can certainly be described as utter madness," he said.

The UK Government has claimed that UK farmers and food processors have nothing to fear from a deal with Australia, since their beef prices are currently far higher than ours, meaning they are unlikely to use any quota they are given.

"It's true to say Australian beef prices overtook ours in January 2020 and have remained high, but in the previous eighteen years they have been consistently lower than ours, and the same is the case for their lamb prices.

"Australian producers also benefit from far lower production costs due to a range of factors including lower standards

"This means that over the past two decades our quota regime has been an essential barrier that has prevented our market and farmgate prices from being undermined by imports."

The agreement reached in principle would see an immediate nine-fold increase in Australia's beef import quota, rising to the equivalent of a 29 fold increase in year ten, and a 45 fold increase in year 15.

For lamb, there would be an immediate doubling of import quotas, rising to the equivalent of a six fold increase in year ten and a nine fold increase in year fifteen.

"Members of Parliament and the UK Government need to act in their constituents and the UK's long term interests by avoiding changes to quota which will have detrimental impacts on core industries - this is as true for our food and farming as it is for steel," he added.

Trade deals and climate change under the spotlight

FARMERS from Pembrokeshire have put the spotlight on industry concerns around the free trade deal with Australia and climate change when they met with local MP Stephen Crabb. Hosting the visit was Farmers' Union of Wales Pembrokeshire County Vice chairman Gerwyn Williams, who farms at Upper Swmbarch, Letterston near Haverfordwest.

The farm extends to approximately 94 acres, with the majority of the land rented from Pembrokeshire County Council, and 3.5 acres owned. Upper Swmbarch is home to a 50 Suckler cow herd, made up of Limousin and British Blue cows. The calves are reared with some sold as stores, some fattened and some kept as replacements. Gerwyn Williams keeps a closed herd and uses AI. Tack sheep are kept on the land in the winter. The land is mainly down to grass, but around 3 hectares of arable silage and 3 hectares of forage rape are grown each year to feed the livestock.

The farm has participated in the Glastir Small Grants scheme, which included planting new hedgerows in a number of locations across the farm and the holding has also previously participated in the Preseli ESA scheme, Tir Gofal and Glastir Entry.

Leading the discussions on the farm walk, Mr Williams said: "We are very concerned about the free trade deal with Australia. There will be major negative impacts for our farmers in Wales. It is absolutely essential that the UK Government ensures there are break clauses in the deal to allow for it to be reviewed. We need the UK Government to stand with the farming sector and help develop export opportunities for our farmers here at home."

Union officials further highlighted concerns around beef prices and uncertainty within the industry as to what would happen as covid restrictions continue to be lifted and more people begin to eat out. Farmgate prices declined significantly during the early stages of the pandemic given the loss of demand from the UK foodservice sector for premium products such as steaks and cheese, and yet 12 months on, the sector is witnessing soaring lamb and beef prices following a shift in reliance on local food producers and UK sourcing.

"While the domestic foodservice sector is evidently an essential outlet for Welsh produce, it is equally a particularly price sensitive outlet through which large volumes of foreign imports are sold. The FUW is concerned that if trade policies allow for cheap food that undermines our world-leading standards to be imported into the UK, the foodservice sector could become an even larger outlet for such food given that the transparency and pressure to source domestic produce is not applied to the same extent as it is with retailers," added Gerwyn Williams.

Mr Williams added that whilst the proportion of local produce procured by some public bodies has increased over recent years, there remain significant numbers of administrations which fail to support Welsh agriculture, choosing instead to accept produce from countries which often fail to meet the high production standards which are a requirement in Wales.

"The nature of some procurement contracts means that what appears to be a commitment to procuring Welsh and British produce within procurement rules can be circumvented by carefully worded clauses.

"The impact of Covid-19 on food supply chains in many parts of the world has served as a stark reminder of the dangers of relying on food imports. Domestic policies and trade deals which undermine sustainable food produced by family farms in Wales subsequently place food security, food standards and therefore farmgate prices at risk.

"We need the UK Government to stand with the farming sector and help develop export opportunities for our farmers here at home."



From left, FUW Pembrokeshire County Chairman Mike Kurtz, Stephen Crabb MP, FUW Pembrokeshire County Vice chairman Gerwyn Williams and FUW Deputy President Ian Rickman.

Governments must recognise the sheer importance of maintaining and supporting food production, security and standards," he said.

Addressing concerns around climate change, Union officials discussed how targets are set by the Government and how the UK and Welsh industry is portrayed negatively in the climate change debate. FUW Deputy President Ian Rickman said: "Many of the facts and figures used in the conversation around climate change relate to non-UK systems of production.

"Here in Pembrokeshire, and across Wales, farmers are adopting climate friendly systems of producing food and looking after the land for example through minimal or no till cropping, grass based production systems, planting of hedgerows, and habitat management. We can't just get rid of the livestock, or drastically reduce it. Livestock play an essential role in looking after the land. Many habitats have to be grazed in order for them to flourish.

"Our dairy industry is also doing their bit and many dairy farmers are already undertaking carbon footprint calculations and producing nutrient and biodiversity plans as part of their milk contracts. Farming must be seen as the solution to the climate problem and not its root cause."

Given the many obstacles farmers now face, including the NVZ regulations and bovine TB, Union officials further stressed that recruiting young people into the agriculture sector and sourcing labour was becoming increasingly difficult.

FUW Pembrokeshire County Chairman Mike Kurtz added: "Recruitment seems to be a common problem in relation to vocational occupations that needs to be addressed.

"I would like to thank Stephen Crabb for meeting with us again and discussing so many issues that trouble the industry. We will continue to work with the UK and Welsh Government to ensure we have thriving, sustainable family farms here in Wales for generations to come."

A familiar face joins FUW Board as farmer director

A FAMILIAR face to many, Alan Gardner, (pictured right), has been elected farmer director on the FUW Board at the Farmers' Union of Wales Council of the Union meeting in June.

Alan is married to Rhian and they have 3 children - Gemma a secondary school teacher, Anwen a Marketing Executive and Thomas a contract herdsman, currently working near Abergale. He has 4 granddaughters.

Brought up on a hill beef and sheep farm in Dolfor near Newtown, he moved to Flintshire in 1991 to operate a share-farming agreement, developing the farm from 150 acres to a 300 acre Farm Business Tenancy. Alan diversified into livery, storage and timber processing on a former pig farm.

He has been the Montgomeryshire Young Farmers County Chairman and past President of Treuddyn YFC and coaches' public speaking and stock judging.

Many will remember Alan also from his previous FUW roles as Vice President from 2003-2006, F&O Committee North Wales additional member from 2002-2003; Livestock, Wool and Marts Committee Chairman from 2000-2002; and Flintshire County Branch Chairman from 2003-2005.

Today he is an Agrisgôp Leader with Farming Connect,

"I look forward to working with colleagues as we strive to strengthen the Voice of Welsh farming."

a post he has held since 2013. He has established many groups including women's and young dairy farmers. Alan has also recently completed a post graduate certificate in Leading Change at Aberystwyth University Business School.

Since 2017 Alan is also a Welsh Food Advisory Committee member at the Food Standards and was a Board Member for Wales in 2006. Additionally he was on the Meat Hygiene Service Industry Liaison Committee from 2000-2002.

Alan further held the post of FUW nominated Director at Hybu Cig Cymru-Meat Promotion Wales from 2002-2006, was a Board member between 2008-2012 and Audit Committee Chairman in 2003-2004 and 2005-2006.

He has worked with the Welsh Government on the 'Sustainable Farming & Environment Towards 2020' as a Task and Finish Group Member between 2005-2007 and established the Famau Discussion Group in 2003.

Alan has also organised numerous Farming Connect supported knowledge transfer events both on and off farm as well as leading members on 4 overseas study trips.

He joined the Meat and Livestock Commission on the Sheep Strategy Council between 2000-2002 and the Welsh Council also from 2000-2002.

Speaking about his election to the FUW Board as a farmer director, he said: "I'm delighted to be joining the FUW Board, and look forward to working with colleagues as we strive to strengthen the Voice of Welsh farming. In my 20 plus years involvement with the Union there have been constant challenges, from Foot and Mouth through

to Brexit. As the farming industry embarks on the considerable changes ahead there is now, more than ever, the need for a dynamic effective FUW, that delivers service and representation to the membership.

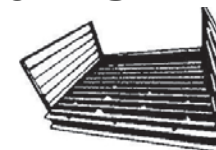
"I hope to assist with completing the reorganisation of the FUW structure, and have a particular interest in developing future leaders at both county and national levels."

FUW President Glyn Roberts said: "I wholeheartedly congratulate Alan on his appointment to the Board and thank Richard Vaughan for his long standing service to this Union."



HOPKINS QUICK FIT CATTLE GRID & BASE

- LOAD TESTED TO 50 TONS
- Installed within hrs/not days
- Minimal labour
- Maintenance free
- No concrete/blocks required - set in the ground on a hard core base



Pat No. 2155526

PLEASE SEND FOR BROCHURE
HOPKINS STEEL FABRICATIONS
 Unit 2A, Lion Works, Pool Road, Newtown, Powys SY16 3AG
 Tel: (01686) 627374 Fax: (01686) 627515
www.hopkinscattlegrids.co.uk

Free Sales Service for FUW Members

If you have anything to sell - big or small - fill in the coupon and for a FREE ADVERTISEMENT send it to:

Y Tir, Plas Gogerddan, Aberystwyth, SY23 3BT or email it to: ytir@fuw.org.uk

Entries must be confined to 25 words and be received by:

August 23 2021

| | | |
|----------|----------------|--------------------|
| FOR SALE | WANTED | LIVESTOCK FOR SALE |
| HOLIDAYS | FARMS FOR SALE | MISCELLANEOUS |

| | | |
|--|--|--|
| | | |
| | | |
| | | |
| | | |

Name

Address

Telephone number

PLEASE NOTE: FREE ADVERTISEMENTS ARE FOR FUW MEMBERS ONLY AND NOT FOR COMMERCIAL TRADERS

Membership number:

FOR SALE

1961 MASSEY FERGUSON 702 TRACTOR DIGGER 710; also a wide range of specialised industrial equipment. Tel: 01686 650325.

VINTAGE TRACTOR NICHOLSON SIDE RAKE; in need of tines. Offers. Tel: 01269 594652.

FORDSON MAJOR DIESEL; P2 Haybob, Flat 8 bale grab, Leyland front tractor weights, P2 2 drum mower. Tel: 01348 881212 / 07779 921934.

YOUNG CALL DUCKS; £10 each, very tame. Duck + 4 young - £25. Rhayader. Tel: 01597 811121.

GYPSUM; The universal soil conditioner. Cost effective source of calcium sulphur for plant nutrition. Contains around 32% calcium (CaO) and 43% sulphur (So3). Reduces high magnesium content. Tel: 01691 777785 / 07802 680687.



ADVERTISE WITH US!

YTir-adverts@blueprintmedia.org.uk
Mobile 07790 387690 | Office 01743 231135

CORNEL CLECS

Dwy o Geredigion yn cychwyn Cymuned i Gyfathrebwyr Cymru

gan Angharad Evans, Swyddog Cyfathrebu'r Iaith Gymraeg

ONID ydym yn lwcus o le rydym yn byw? A mwy na hynny'r gallu i gyfathrebu a'n gilydd trwy'r Gymraeg?

Mae dwy ferch o Geredigion wedi lansio cymdeithas newydd i siaradwyr Cymraeg sy'n gweithio yn y maes Cyfathrebu, ac mae gan y ddwy gysylltiad agos gydag Undeb Amaethwyr Cymru.

Mae Gwenan Davies yn ferch fferm i deulu Cwmcoedog, Mydroilyn sydd yn aelodau o'r Undeb ers blynnyddoedd lawer. Mae Cwmcoedog erbyn hyn wedi datblygu i gynnis bythynnod a chyfleusterau glampio o'r safon uchaf.

Mae Manon Wyn James yn byw yn Nhregaron ac yn wraig i Gwion James sy'n Uwch Weithredwr Yswiriant yn swyddfa'r Undeb yn Llanbed.

Aeth y ddwy ati i sefydlu SYLW er mwyn creu cymuned o arbenigwyr Cyfathrebu i rannu syniadau, creu cysylltiadau a datblygu gyrfaoedd mewn awyrgylch gwbl Gymraeg.

Mae'r pandemig wedi golygu bod modd trefnu cynadleddau Cyfathrebu yn rhithwir a denu aelodau drwy system ddiigidol.

"Mae Cyfathrebu yn faes sy'n parhau i dyfu," meddai Manon. "Does dim un sefydliad neu gwmni yn mynd i allu gweithredu heb fod yna ddim neu berson Cyfathrebu wrth y llyw. Mae'n faes cyffrous tu hwnt i weithio ynddo, ac mae'n faes lle mae cysylltiadau mor bwysig. Gobeithio felly bydd SYLW yn gyfle i arbenigwyr Cyfathrebu Cymru ddod i adnabod ei gilydd a dysgu o brofiadau ei gilydd hefyd."

Gyda nifer helaeth o gyrsiau hyfforddiant ar gael yn Saesneg eisoes, does dim amheuaeth fod galw mawr am gymuned Gymraeg i gynnal digwyddiadau arbenigol ym maes Cyfathrebu.

"Fe wnaethom ni ddechrau sgwrsio rhai misoedd yn ôl, ar ôl bod ar sawl cwrs hyfforddi yn y Saesneg a gweld galw gwirioneddol ar gyfer rhywbeth tebyg yn y Gymraeg. Mae angen rhoi'r cyfle i siaradwyr Cymraeg sy'n gweithio yn y maes i rwydweithio yn Gymraeg," meddai Gwenan.

"Doedden ni ddim am aros tan ddiwedd y pandemig felly fe wnaethom ni benderfynu mynd ati i lansio nôl ym mis Mai."



Cynhaliwyd cynhadledd rithwir gyntaf SYLW ym mis Mehefin gyda dros 80 yn mynychu. Mae cyfres Sgyrsiau SYLW ar y ffordd ym mis Medi a chynllun Mentora yn cael ei lansio yn yr Hydref.

"Mae'r ymateb hyd yma wedi bod yn arbennig, ac mae gan SYLW dros 270 o aelodau erbyn hyn. Ry'n ni'n edrych mlaen at ddatblygu'r fenter ymhellach."

Pob hwyl i Manon a Gwenan gyda'r fenter newydd, ac mae'n braf gweld dwy o ferched cefn gwlad yn fodlon mentro a thorri tir newydd gan roi Cymru ar y map a rhoi plattfform i'r Cymry gael dweud ei dweud a sicrhau bod sylw teilwng yn cael ei roi i bopeth Cymraeg.

This article is in English on the FUW website - News - Y Tir News: "Two from Ceredigion start up a Community for Wales' Communicators," or from your local county office.

Osian yn derbyn Gwobr Myfyriwr CAFC/IBERS

Gwobr CAFC am y Myfyriwr Amaethyddiaeth Gorau yn Sefydliad y Gwyddorau Biolegol, Amgylcheddol a Gwledig, Prifysgol Aberystwyth. Rhaid i ymgeiswyr fod wedi astudio Amaethyddiaeth neu raglen gydag elfen sylweddol o Amaethyddiaeth i lefel Gradd, Diploma neu Dystysgrif a dylent fod wedi'u geni a'u magu yng Nghymru.

MAE'R Wobr eleni am Fyfyriwr y Flwyddyn ym mynd i Osian Gwyn Jones o Rhyd-y-Fen, Arenig, Y Bala, Gwynedd. Magwyd Osian ar fferm Rhyd-y-Fen, Arenig, Y Bala, Gwynedd, fferm fynydd rhwng 340m a 689m sy'n cadw 500 o ddefaid Mynydd Cymreig a 18 o fuchod Duon Cymreig. Osian fydd y 4edd genhedlaeth o'r teulu i ffermio yno, ond mae'r teulu wedi ffermio yn yr ardal ers canrifoedd.

Mynychodd Osian Ysgol Gynradd Bro Tryweryn ac Ysgol Uwchradd y Berwyn cyn cael ei dderbyn i astudio am radd BSc (Anrh) mewn Amaethyddiaeth ym Mhrifysgol Aberystwyth yn 2018. Graddiodd eleni â gradd Dosbarth I gyda marciau arbennig o uchel a chyson.

Dywed mai ei uchafbwyntiau tra oedd yn fyfyriwr yn y Brifysgol oedd y darlithoedd glaswelltir - yn benodol y darlithoedd ar systemau pori a sut mae modd cynyddu effeithlonrwydd defnydd glaswelltir drwy bori mewn dull mwy technegol; hefyd y darlithoedd ar gyfrifo ffrwythlondeb ac iechyd pridd. Ystyria fod yr holl waith a wnaethpwyd ar yr amgylchedd amaeth yn berthnasol iawn i'r math o ffermio y maent yn ei ymarfer gartref ac yn gyfoes iawn o ystyried y cynnydd yn niddordeb y cyhoedd yn ôl troed amgylcheddol eu bywyd. Yn ogystal, gwerthfawrogodd y bywyd cymdeithasol rhagorol sydd i'w brofi ym Mhrifysgol Aberystwyth.

Ei gynlluniau ar ôl graddio ar hyn o bryd yw ffermio gartref gan edrych ar y posibilrwydd o rentu mwy o dir i ehangu'r ddiadell a'r fuches yn ogystal ag opsiynau arallgyfeirio posibl. Mae hefyd yn bwriadu chwilio am swydd o fewn y diwydiant amaethyddol i gyd-fynd â'i waith ar y fferm yn y dyfodol agos.

Mae Prifysgol Aberystwyth yn llongyfarch Osian ar ei gamp ac yn dymuno'n dda iddo at y dyfodol. Mae Cymdeithas Amaethyddol Frenhinol Cymru yn falch o gefnogi'r Wobr hon sy'n cydnabod potensial aruthrol y genhedlaeth nesaf.

Darllenwch fwy am Osian ar dudalen 11

This article is in English on the FUW website - News - Y Tir News: "Osian Gwyn Jones receives the RWAS/IBERS Student Award for 2021," or from your local county office.

NET TEX

ONE BOLUS FROM START TO FINISHED

**NEW
& IMPROVED**
proven to last
60 days



Cob-I-Sel bolus - gather once then let them grow

01283 524222

sales@net-tex.co.uk

www.net-tex.co.uk



Meet FUW Insurance Services Ltd claims team

THE team is made up of three people, Claim Relationship Manager, Sally Phillips and Claim Handlers Meleri James and Alex Grant.

The team handle a number of various claims for clients and liaise between the client and the insurance companies to ensure the claim process is as smooth as possible. The advantage of having an internal team is that we have good relationships with our insurance providers, can help our clients in the event of a claim and be there to help them through.

The biggest advantage is the client can be assured that when they phone us to discuss the claim they will speak to their claim handler, who will liaise with the insurance company thus taking away the need for our client to be waiting on a phone and speak to different people each time.

Sally Phillips, Claim Relationship Manager

I was born in London and moved out to Wiltshire, where we lived for 18 years, I finally settled in Wales in 2003 and initially ran a bed & breakfast and holiday cottages business. I then went back to work full time in 2006 and started working in insurance at Old Oak insurance brokers, where I moved over to manage claims.

I have been working in claims now some 15 years and in 2011 I won the NIG Farmweb Claim Handler of the year, which is a UK national award. I have gained a lot of experience and am therefore in a good position to be able to advise clients on their claims.

I have been with FUW Insurance Services Ltd since May 2012 and started as an Account Handler in Pembrokeshire. In 2015, the decision was taken to centralize our claims and I was appointed to manage and set up the new claim process.

Now as the Claim Relationship Manager, I manage the claims team and our external motor claims company, handle any issues and problems and make sure the claim process runs smoothly.

I very much enjoy working for FUW Insurance Services Ltd and believe that the local service we provide is vital to our clients.

Claims can be very challenging at times, but each day is different and when the claim is settled and the client is happy, we have achieved what we set out to do.

Meleri James,

Claim Handler

I've grown up and lived in Aberystwyth all my life and I have two children and a dog.

Before working with FUW Insurance

Services Ltd I worked in travel. I have been with FUW Insurance Services Ltd since February and thoroughly enjoy my role as a Claim Handler, it's a rewarding yet challenging role but I enjoy the difference in claims daily and that nothing is ever the same.



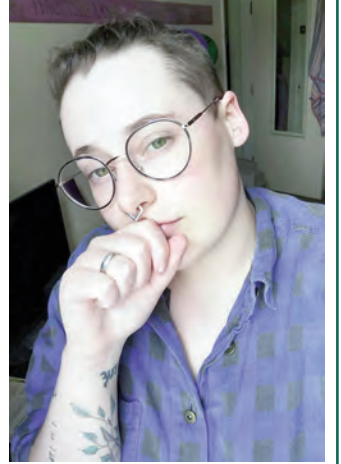
Alex Grant, Claim Handler

I joined FUW Insurance Services Ltd a month ago, and have so far enjoyed my little niche in the claims team.

I'm from Bletchley in Milton Keynes originally, and I moved to Wales to study Classical Civilisation at UWTSD, Lampeter campus.

I lived in Lampeter for four years before deciding to move somewhere closer to the sea about two years ago, and have enjoyed living in Aberystwyth since. Ever since I've moved to Wales I've loved it.

I'm currently studying Philosophy and Religion part time in the hopes to have a Masters at the end of it, which I'm not expecting to be able to do anything with, apart from having a second opportunity to wear a fancy hat.



Byw'n lleol Gweithio'n lleol Yswirio'n lleol

Ffoniwch ni ar

0344 800 3110

am ddyfynbris wedi ei deilwra
i'ch anghenion chi

Live locally
Work locally
Insure locally

Call us on

0344 800 3110

for a quote that is tailored
to your needs



Gwasanaethau Yswiriant FUW yw arddull masnachu FUW Insurance Services Limited sydd wedi'u hawdurdodi a'u rheoleiddio gan y Financial Conduct Authority. Rhif cofrestru 615251. Swyddfa Gofrestredig: Llys Amaeth, Plas Gogerddan, ABERYSTWYTH, SY23 3BT. Wedi'i gofrestru yn Lloegr a Chymru o dan rif 07981993

FUW Insurance Services is a trading style of FUW Insurance Services Limited who are authorised and regulated by the Financial Conduct Authority. Registration number 615251. Registered Office: Llys Amaeth, Plas Gogerddan, ABERYSTWYTH, SY23 3BT. Registered in England & Wales number 07981993



Office telephone numbers

Llangefni 01248 750462

Builth Wells 01982 553406

Caernarfon 01286 675136

Lampeter 01570 422556

Carmarthen 01267 222570

Ruthin 01824 702912

Cowbridge 01446 773108

Abergavenny 01873 859833

Llanrwst 01492 642683

Dolgellau 01341 421290

Newtown 01686 623093

Haverfordwest 01437 783969

Codi pryderon difrifol y diwydiant gydag AS De Clwyd

MAE ffermwyr o Feirionnydd wedi codi pryderon difrifol y diwydiant gydag Aelod o'r Senedd, Ken Skates, mewn ymweliad fferm ddiweddar â Chadeirydd cangen Sir Feirionnydd o Undeb Amaethwyr Cymru, Edwin Jones a swyddogion yr Undeb.

Roedd y digwyddiad, a gynhaliwyd gan Mr Jones a'i wraig Eirian, yn Nhŷ Mawr, Carrog, Corwen, Sir Ddinbych, yn gyfle i weld y fferm, sy'n ymestyn o lannau'r afon Dyfrdwy i oddeutu 1,500 troedfedd uwchben lefel y môr, ac er mwyn i aelodau dynnu sylw a thrafod materion yn ymwneud â newid yn yr hinsawdd, polisiau fferm y dyfodol a'r rheoliadau llygredd dŵr amaethyddol. Mae'r fferm deuluol nodweddiadol, sy'n ymestyn i 149 hectar, ac yn fryniau ac ucheldir yn bennaf, yn gartref i 730 o ddefaid Mynydd Cymreig a 190 o ddefaid blwydd.

Etholwyd Edwin Jones yn Gadeirydd Cangen UAC Meirionnydd ym mis Mehefin 2021 ac mae'n gyn Brifathro Cynorthwyol yn Ysgol Maes Garmon, Yr Wyddgrug. Mae ei wraig Eirian hefyd yn gyn Bennaeth Cymraeg a Drama yn yr ysgol. Mae Edwin ac Eirian wedi ffermio Tŷ Mawr ers 2002, gydag Eirian wedi cael ei magu ar y fferm. Ymddeolodd y ddau o'u swyddi dysgu yn 2012.

Mae Tŷ Mawr yn fferm borfa, dwysedd isel, allbwn isel, gyda'r gwrttaith lleiaf yn cael ei ddefnyddio. Wrth siarad am bryderon amgylcheddol a newid yn yr hinsawdd, dywedodd Mr Jones: "Mae cyfartaleddau byd-eang i drafod allyriadau amaethyddol mor annheg a charmarweiniol wrth ystyried y math hwn o fferm. Mae gennym borfa o ansawdd da, ac mae gwella iechyd y pridd yn bwysig iawn i ni.

"Yr hyn sy'n amlwg i ni a'r diwydiant amaethyddol yw bod yn rhaid cydnabod ffynonellau ynni adnewyddadwy ar y fferm, cadwraeth a dal a storio carbon trwy ddefnydd tir i wrthbwyso allyriadau amaethyddol yn hytrach nag fel endidau ar wahân."

Wrth gerdded o amgylch y fferm, clywodd Mr Skates ymhellach fod y fferm, fel llawer o rai eraill yn ei etholaeth ac ar draws Cymru, yn ddibynnol iawn ar gynllun y Taliad Sengl a bod angen rhyw elfen o sicrwydd ar gynllun yn y dyfodol i sicrhau bod yna ffermydd teuluol



O'r chwith, Is-Gadeirydd UAC Meirionnydd Gwion Rowlands, cyn-Lywydd UAC Emyr W Jones, Rheolwr Gyfarwyddwr Grŵp UAC Guto Bebb, Llywydd UAC Glyn Roberts, Cadeirydd UAC Meirionnydd Edwin Jones, Ken Skates AS, Swyddog Cyfathrebu Polisi UAC Gareth Parry, cyn-Gadeirydd UAC Meirionnydd, Sion Ifans, a Huw Jones, Swyddog Gweithredol Sirol UAC Meirionnydd.

cynhyrchu llawer mwy o bunnoedd i fusnesau eraill - mecanyddion, cludwyr, contractwyr, marchnadoedd da byw ac ati - sy'n golygu bod buddion economaidd cymorth fferm yn ymestyn ymhell y tu hwnt i'r buarth ac yn werth biliynau i economi Cymru bob blwyddyn."

Pwysleisiodd swyddogion yr undeb ymhellach fod traean o boblogaeth Cymru yn byw mewn ardaloedd gwledig lle mae ffermio, a busnesau sy'n dibynnu ar amaethyddiaeth, yn chwarae rhan hanfodol mewn economïau lleol.

"Pan ystyriwn yr effaith bellgyrhaeddol y mae amaethyddiaeth yn ei chael, rydym yn naturiol yn pryderu am gytundebau masnach, fel yr un sy'n cael ei gwblhau gydag Awstralia ar hyn o bryd, a all ganiatáu mewnforio bywd rhad a gynhyrchir i safonau sy'n llawer is na'r rhai sy'n ofynnol gan ffermwyr Cymru," ychwanegodd Huw Jones, Swyddog Gweithredol Sir UAC Meirionnydd.

This article is in English on the FUW website - News: "Farmers raise critical industry concerns with Member of the Senedd for Clwyd South," or from your local county office.

"Colli cyfaiill da i fyd amaeth" - cofio'r Arglwydd Elystan Morgan



O'r chwith, Dai Jones ac Elystan Morgan yn y cinio mawreddog yng Ngwesty'r Marine yn Aberystwyth ar 8 Ebrill 2006.

GYDA thristwch y bu i Undeb Amaethwyr Cymru glywed am farwolaeth yr Arglwydd Elystan Morgan. Bu cyfraniad Elystan Morgan yn sylweddol a hynny yng nghyd-destun Cymru, y Gymraeg, Amaethyddiaeth ac wrth gwrs, Sir Aberteifi. Rydym fel swyddogion ac aelodau'r Undeb yn falch o'r cyfle hwn i dalu teyrnged i un o gymeriadau mawr y byd gwleidyddol yng Nghymru dros yr hanner canrif ddiwethaf.

Yn naturiol, fe allem nodi ei yrfa Seneddol, boed fel Aelod Seneddol dros Sir Aberteifi rhwng 1966 ac 1974 a'i

wasanaeth yn Nhŷ'r Arglwyddi dros gyfnod o bron i ddeugain mlynedd rhwng 1981 a 2020. Galledd hefyd sôn am ei waith diflino'n arwain ymgyrch ddatganoli 1979 a'r cyfraniad mawr a wnaethpwyd ganddo'n dawl effeithiol wrth gyfrannu at gryfhau'r setliad datganoli a ddaeth yn dilyn y bleidlais yn 1997. Yn ogystal, gallem drafod ei yrfa ddisglair ym myd y gyfraith a'i gyfnod maith yn Farnwr uchel iawn ei barch. Fel Undeb yr ydym yn falch o nodi ei gyfraniad diffuant i Gymru a chefn gwlad ynghyd â'r ymroddiad fu ganddo gydol ei oes i'r Gymraeg.

Fel gwleidydd yr oedd gan Elystan Morgan ddealltwriaeth a chydymdeimlad cynhenid tuag at ofnyon byd amaeth a Chymru wledig, a oedd yn rhan bwysig o'i waith fel Aelod Seneddol dros ei sir enedigol. Rhoddodd ymrwymiad cyffelyb yn ei gyfnod yn Nhŷ'r Arglwyddi lle'r oedd yn fodlon amdiffyn buddiannau cefn gwlad a Chymru'n gyson. Bu'n bresennol droeon yn y cinio blynyddol a arferai gael ei gynnal gan yr Undeb yn Nhŷ'r Arglwyddi ac yn y digwyddiadau a gâi eu cynnal yn y Senedd i nodi wythnos brechwast fferm yr Undeb.

Roedd y digwyddiadau hyn yn fodd o dathlu hynodrwydd cynnyrch cefn gwlad Cymru tra hefyd yn creu ymwybyddiaeth o ofnyon byd amaeth ymysg gwleidyddion. Roedd presenoldeb Elystan Morgan yn sicrhau bod negeseuon yr Undeb yn cael gwrandawriad a lladmeredd cadarn ar y meinciau coch.

Roedd Elystan Morgan hefyd yn fodlon ymwneud â'r Undeb yn gymdeithasol ac un digwyddiad sy'n aros yn y cof yw cinio mawreddog yng Ngwesty'r Marine yn Aberystwyth ar 8 Ebrill 2006. Dyma'r cinio cyntaf i'r Undeb ei drefnu i nodi 'Cyfraniad Unigryw i Fyd Amaeth Cymru'. Penderfynwyd cyflwyno'r wobwr hon am y tro cyntaf i Dai Jones, neu Dai Llanilar i'r mwyafrif ohonom. Penderfynodd Dai y dylid cael Elystan Morgan yn ŵr gwadd a dyna a fu. Cafwyd digwyddiad arbennig iawn gyda phob tocyn wedi'i werthu, nid yn unig i'r ystafell fwyta fawr yn y Marine ond hefyd i nifer o ystafelloedd eraill gydag uchelseinydd yn cario llais y siaradwr gwadd i'r rhai hynny nad oeddent yn ddigon ffodus i fod yn y brif ystafell. Roedd hi'n noson hwyliog gyda dawn trin geiriau rhyfeddol yn cael ei defnyddio i gyflwyno neges bwrpasol, a'r ddau hen ffrind, Elystan a Dai, ar ben eu digon.

Yn ei lyfr 'Atgofion Oes' braf oedd gweld Elystan

Morgan yn cyfeirio at un o sylfaenwyr a hoelion wyth cynnar yr Undeb, sef D.J Davies, Panteryrod (sef tad Maelgwyn Davies). Cyfeiriodd ato fel ffermwr galluog, huawdl, herfeiddiol a hynod liwgar gan nodi iddo ddo o fewn 2,200 pleidlais i ennill sedd Ceredigion i'r Blaid Lafur yn 1964 gan flaenaru'r tir i Elystan Morgan gipio'r sedd yn 1966.


Y mae coll'r Arglwydd Elystan Morgan yn fater nid yn unig o golli cyfaiill da i fyd amaeth yng Nghymru a'r Undeb hon yn benodol, (ond hefyd yn dynodi rhyw ddiwedd ar gyfnod lle'r oedd gwleidyddion yn uchel eu parch ac yn credu mewn datgan eu safbwyntiau'n onest). Fe fydd colled fawr ar ei ôl ac fel Undeb, hoffem estyn ein cydymdeimlad at ei deulu a'i gyfeillion.

This article is in English on the FUW website - News: "A statement from the Farmers' Union of Wales in memory of Lord Elystan Morgan," or from your local county office.

Farmplus

MANUFACTURER OF TIMBER BUILDINGS

Timber buildings
Natural products from renewable resources.
Caring for the environment.



3 BAY MONOPITCH

as shown
45ft x 17ft x 10ft 6in, eaves
delivered
Many other options available

FARMPLUS SHAY LANE, LONGRIDGE, PRESTON PR3 3BT
Tel: 01772 785252 www.farmplus.co.uk

Pembrokeshire farmers share concerns with MS

PEMBROKESHIRE FUW county officials recently met with their local Member of the Senedd, Paul Davies, at a farm visit hosted by organic dairy farmers Dai, Sharon and Llŷr Miles, at their farm Beudy Bach, Haverfordwest. The main concerns raised were the current Control of Agricultural Pollution Regulations and bovine TB - issues which are making farming unsustainable for many in the county and across Wales.

The business was started by Dai and Sharon in 1997 when they moved to Pembrokeshire taking on the tenancy of Barnsley Farm, a 143 acres farm. At the time it was a stock/arable unit which they converted into an organic dairy unit starting with 33 cows and leased milk quota.

In 2001 they rented a further 90 acres of pasture land and then in 2005 they rented the neighbouring farm within the same estate, Beudy Bach. In 2018 they had the opportunity to purchase Beudy Bach from the estate and installed a modern robotic milking system on the holding. Llŷr joined the business after returning from Aberystwyth University where he studied agriculture.

Speaking about the impact the Control of Agricultural Pollution Regulations are already having, Dai Miles said: "It's already having an effect, the price of rented land has gone through the roof as big farms need more land to spread their slurry on. For the majority of medium to small farms, who either can't find extra land or can't afford it, it will mean reducing stocking numbers. Some of these farms have taken out loans and grants to develop their businesses and now they have to cut their business back."

Whilst the Miles family are preparing to deal with the new regulations and motions are in place to cover the slurry store, they were clear that the review of these regulations must not be delayed.

Sharon said: "Our main concerns are the Control of Agricultural Pollution Regulations coming in as it's the small and medium sized farms that will suffer and won't manage to keep up. It will force people to give up their business, retire sooner than they want or need to. The upcoming review gives the Welsh Government the opportunity to take another look at these regulations and put a plan in place that is better tailored to suit Wales."

"We have to be hopeful about the review but the Senedd and Welsh Government mustn't drag its feet with it. I hope that the review will take into full consideration the financial implications these regulations have on small and medium sized farm businesses and tenant farmers and that they also consider the social and cultural impacts on rural communities, given the implications of these regulations on young farmers, tenants, and new entrants to the industry," added Dai Miles.

However, it's not just the Control of Agricultural Pollution Regulations that are a cause for concerns for the family. The farm has recently gone down with bovine TB and Llŷr feels not enough is being done by the current Welsh Government to address and solve the issue. He said: "This is the first time in three years that we have suffered a breakdown here. We had one reactor, a first calving heifer. For some reason, even though our direct neighbours are clear, we have been put under severe interpretation. As a result we lost another 4 cows, ranging from a first calving heifer to second and third calvers - animals which were in their prime."

In 2012, Welsh Government replaced plans



From left, Llŷr, Dai and Sharon Miles with Paul Davies MS.

to cull badgers in north Pembrokeshire with a five year badger vaccination programme which, as predicted by Welsh Government's own evidence, has led to no statistically significant fall in cattle herd incidents. The decision in 2012 was branded by the FUW as a betrayal of Welsh farmers, particularly as the Welsh Government's own financial assessment concluded that badger culling would, by saving the lives of cattle, result in a net financial benefit, while badger vaccination would lead to a net loss of £3.5 million.

"Not enough is being done. I understand we have to control TB and the reactors do need to be slaughtered but it's not just cows with TB. There is nothing being done to address the problem in the wildlife reservoir. Let's not forget that countries such as France and Germany are able to maintain bTB incidence levels close to zero and the Republic of Ireland has been able to halve bTB incidents through proactive badger culling," said Llŷr Miles.

FUW Pembrokeshire County Chairman Mike Kurtz added: "I want to thank the Miles family for hosting the farm tour and sharing their thoughts and concerns about the industry with our local Member of the Senedd Paul Davies.

"The combination of these new regulations and the on-going bovine TB crisis here in Pembrokeshire is having a severe impact on our farmers, in terms of their mental health, and also on the rural economy and the contributions the industry makes.

"We had a very positive discussion with Paul Davies about these issues and many other matters including the future direction of farm funding and trade deals and I thank him for taking the time to listen to our concerns. We will continue to work with all political parties going forward to ensure that thriving, sustainable, family farms will not become a distant memory."

"The combination of these new regulations and the on-going bovine TB crisis here in Pembrokeshire is having a severe impact on our farmers."

The Foundation for Common Land slams Defra's decision -

to exclude low input and unimproved grasslands from England's Sustainable Farming Incentive

THE Foundation for Common Land (FCL) has slammed Defra's decision to exclude low input and unimproved grassland from its Sustainable Farming Incentive - a scheme which is supposed to bridge the transition from the 'old' BPS payments system to the new English Environmental Land Management (ELM) public goods payment scheme.

Under Defra's Agricultural Transition Plan, English farmers with a claim of £30,000 or less will see a five per cent cut to their BPS in 2021, followed by a 20 per cent cut in 2022, 35 per cent in 2023 and 50 per cent in 2024. Higher payments will be cut by significantly more.

With work on England's Environmental Land Management scheme still in its early stages, the Sustainable Farming Incentive was supposed to fill the gap caused by the cuts to BPS payments.

However, despite Defra's commitment that all English BPS applicants would be able to apply including those in existing Stewardship Schemes, low input and unimproved grassland - some of England's most precious wildlife habitats - have been excluded.

According to the Foundation for Common Land, much of England's lowland unimproved grassland is common land, including 20,000 ha

of the New Forest, the Malvern Hills and Minchinhampton, the Devon heathlands and Cumbria's coastal marshes.

The Foundation highlights that while the farmers and commoners managing this land will be losing their BPS over the next seven years, unlike farmers on improved grassland, arable land and moorland they will not have the opportunity through the Sustainable Farming Incentive to be rewarded for public goods not yet paid for by existing Stewardship Schemes.

Speaking after Defra announced details of the Sustainable Farming Incentive in late June, Julia Aglionby, Executive Director of the Foundation, said: "This is a broken promise by this [UK] Government.

"The Agricultural Transition Plan says; 'Initially, all farmers currently in receipt of the Basic Payment Scheme will be eligible [for SFI], including those already in land management schemes such as Countryside Stewardship.'

"This is clearly not true if you farm unimproved lowland grassland. Our concern is that these most special places will be at risk as farmers come under pressure due to declining incomes as BPS is phased out. Lowland commons deliver so much for nature, climate, and people especially during Covid; why would you disadvantage them?"



Marketing Coordinator job vacancy available soon

keep an eye on our website for details

Swydd Cydlynnydd Marchnata ar gael yn fuan

cadwch lygad ar ein gwefan am fanylion

Croesffordd ansicr i amaeth yn yr ucheldir

gan Osian Gwyn Jones, mab fferm fynydd o Arenig, Y Bala, Gwynedd

MAE amaethyddiaeth wedi bod o ddiddordeb mawr i mi erioed, ac roeddwn wrth fy modd yn helpu dad ar y fferm adref pan oeddwn yn iau. Cefais fy magu yn Rhyd-y-Fen, Arenig, fferm fynydd sy'n esgyn o 340m hyd at 700m lle rydym yn cadw defaid Mynydd Cymreig yn ogystal â gwartheg duon Cymreig.

Derbyniais fy addysg gynradd yn Ysgol Bro Tryweryn, Frongoch, cyn mynd ymlaen i'r uwchradd yn Ysgol y Berwyn, Y Bala. Yn y 6ed dosbarth, cefais y cyfle i wneud fy lefelau-A, yn ogystal â chwblhau BTEC mewn amaethyddiaeth, yn un o'r ail flwyddyn i'w astudio yn dilyn ail-gyflwyno cymhwyster amaeth yn Ysgol y Berwyn.

Rwyf yn falch iawn fy mod wedi manteisio ar y cyfle yma, gan iddo osod sylfaen fy addysg amaethyddol a chawsom ymweld â'r sioeau SIMA a SIA ym Mharis yn y flwyddyn gyntaf, a ffatri McHale yn Sir Mayo yn yr ail flwyddyn.

Yn dilyn hyn, penderfynais mai cwrs amaethyddiaeth ym Mhrifysgol Aberystwyth oedd y trywydd yr hoffwn ei ddilyn. Yn y brifysgol, mwynheais yr holl waith a wnaethpwyd ar yr amaeth-amgylchedd gan ei fod yn berthnasol iawn i'r math o ffermio rydym yn ei wneud adref ac yn gyfoes iawn yn dilyn cynnydd yn niddordeb y cyhoedd yn ôl troed amgylcheddol eu bwyd.

Tair blynedd a gradd dosbarth cyntaf yn ddiweddarach, rwyf yn ymuno â diwydiant sydd ar groesffordd ansicr, a gobeithiaf fod y 4ydd cenhedlaeth i fugeilio yn Rhyd-y-Fen.

Fy ngobeithion ar gyfer dyfodol y diwydiant amaeth:

Un o fy mhrif obeithion ar gyfer dyfodol y diwydiant amaeth yw fydd y cynlluniau amaeth-amgylcheddol newydd yn parhau i gynnal amaeth yn yr ucheldir yn yr un modd ac mae wedi ei wneud dros y blynyddoedd diwethaf. Credaf fod ucheldir Cymru yn gyfoethog mewn cyfalaf naturiol a'i fod yn



hen bryd i'r cyhoedd sylweddol i'r hyn mae amaeth yn ei ddarparu fel gwasanaethau ecosystemaidd.

O ran dyfodol y diwydiant, mae'r ddogfen ymgynghoriad Papur Gwyn Amaeth (Cymru) yn sefydlu rheolaeth tir cynaliadwy fel yr egwyddor trosfwaol ar gyfer polisi amaeth Cymru i ddod er mwyn lleddfu effeithiau amaeth dwys ar yr amgylchedd (Adran 3, paragraff 2.48).

Mae'r ddogfen hefyd yn nodi fe ddylai'r cynllun newydd fod yn gwobrwyo amaethwyr am y cynhyrchiant o nwyddau anfarchnadol (gwella'r pridd, aer glân, dŵr glân, cynyddu bioamrywiaeth a chmau i leihau cynhesu byd-eang) ar lefelau uwch na'r rheoliadau drwy reolaeth o'r tir mewn ffordd gynaliadwy (Adran 3, paragraff 2.60).

Ysgrifennais fy nhraethawd gradd ar y posibilrwydd o ddefnyddio calchu i atal llifogydd, lle astudiais yr effeithiau o wahanol gyfnodau ers ychwanegu calch ar ymdreiddiad dŵr mewn glaswelltir. Gwnaethpwyd hyn drwy arsylwi perthynas pH, gorchudd meillion, poblogaeth pryfaid genwair a deunydd organig gydag ymdreiddiad dŵr. Dyma enghraifft

o'r math o waith y gobeithiaf y bydd ffermwyr yn cael eu gwobrwyo ar ei gyfer yn y dyfodol, lle mae dwysáu cynaliadwy yn galluogi cynnydd mewn cynhyrchiant heb fod yn niweidiol i'r amgylchedd.

Pryderus yw targed Llywodraeth Cymru i blannu 4000ha o goetiroedd bob blwyddyn a osodwyd fel rhan o'r Cynllun Cyflawni Carbon Isel yn 2019, a gafodd ei ddyblu o'r targed o 2000ha/flwyddyn a osodwyd yn 2018 fel rhan o'r Strategaeth Coetir dros Gymru. Sgîl effaith anochel o hyn dros yr hirdymor byddai dirywiad yng nghymdeithasau gwledig ac ucheldir Cymru.

Bydd y lleihad mewn cyflenwad tir yn gyrru prisiau allan o afael y mwyafrif o ffermwyr Cymru, ac yn cynrychioli'r hoelen olaf yn arch ffermydd teuluol Cymru. Fel y rhybuddiwyd gan y prifardd Gwenallt, "Coedwigaeth lle y bu cymdogaeth, Fforest lle bu ffermydd" a bydd hyn yn arwain at leihad tyngedfennol yn niferoedd siaradwyr yr iaith Gymraeg.

Buaswn yn hoffi gweld diwydiant amaeth sydd yn cynnig digon o gyfleoedd i bobl ifanc, yn ogystal â gweld newidiadau fel bo modd iddynt fyw yn eu cymunedau lleol yng nghefn gwlad. Gobeithiaf y bydd amaeth yn gallu parhau yn yr ucheldir am genedlaethau fel y mae wedi ers canrifoedd, ond yn gallu addasu i gyd-fynd â'r amseroedd.

Fel ffermwyr mynydd, credaf fod ganddom gyfle i fod ar flaen y gâd yn 'di-garboneiddio' diwydiant amaeth Cymru er mwyn cyrraedd y targed o sero-net erbyn 2050 a osodwyd gan y Llywodraeth.

This article is in English on the FUW website - News - Y Tir News: "Uncertain crossroad for agriculture in the uplands," or from your local county office.

Llyfryddiaeth:

Llywodraeth Cymru, 2020. Written Statement: Publication of the Agriculture (Wales) White Paper. <<https://gov.wales/written-statement-publication-agriculture-wales-white-paper>> [Mynedwyd 30/06/21]



**We collect -
Silage Wrap
Silage Sheeting
Feed Bags
Fertiliser Bags
From the whole
of Wales and the
Border Counties.**



Collections direct off farm or group collections. (Reduced rate for group collections)

Contact us for information & bookings at:

office@birchfarmplastics.co.uk • 01792 869776

Extremely competitive to landfill costs • Waste transfer note supplied on collection day

Highlighting critical issues affecting the industry during virtual Royal Welsh Show

THE FUW and FUW Insurance Services Ltd. highlighted and discussed the most critical issues affecting the agricultural industry through a series of webinars at the virtual Royal Welsh Show, which was sponsored by the FUW.

FUW President Glyn Roberts said: "The week was a busy one for the FUW team and we had an excellent presence at the virtual Royal Welsh Show. We hosted a variety of webinars ranging from the rural housing crisis, climate change, mental health, digital connectivity and farm safety - each and every one of them touched on crucially important issues for our industry.

"If you weren't able to join them during the show week, they are available for you to watch in the members section of the FUW website and of course the Royal Welsh show events pages. I would like to thank all of our speakers for their excellent contributions and of course also the Royal Welsh Show for providing the platform so we could, against the odds, still bring a virtual show to everyone."

In addition to the webinars, the Union also launched a lobbying tool through its website, allowing members and the public to write to their elected representatives highlighting their grave concerns about the Free Trade Deal with Australia.



"Rural communities across the UK have been under pressure due to second home ownership and related effects for decades, but the pandemic has accelerated the trend, causing rapid house-price inflation."

Starting the virtual show week, the FUW focussed on the rural housing crisis and the webinar, which was chaired by Farmers Guardian Chief Reporter Abi Kay, heard from Cumbria MP and former Liberal Democrat leader Tim Farron; Gwynedd County Council Leader and WPGA Rural Forum co-chair Dyfrig Siencyn and Nefyn Town Council leader and Hawl i Fyw Adra campaigner Rhys Tudur.

"Rural communities across the UK have been under pressure due to second home ownership and related effects for decades, especially in 'honeypot' areas such as National Parks, but the pandemic has accelerated the trend, causing rapid house-price inflation and placing rural houses even further beyond the financial reach of rural and agricultural communities. Our speakers delved much deeper into the subject and if you weren't able to join us on the day you can catch up with them through the website," said FUW President Glyn Roberts.

The webinar 'Tackling the rural housing crisis' is available to watch again on the members section of the website: www.fuw.org.uk/login

Addressing concerns around climate change and food production, a panel of experts discussed 'Producing food and looking after the environment'.

The event, which was chaired by FUW Deputy President Ian Rickman, heard from FUW Head of Policy Dr Nick Fenwick who addressed the issue of reducing livestock numbers and planting trees in Wales; Laura Ryan from the Global Meat Alliance addressed the global meat perspective and the United Nations Food Systems Summit dialogue; Hybu Cig Cymru-Meat Promotion Wales, Industry Development and Relations Manager, John Richards spoke about the role livestock farming plays to positively enhance biodiversity and habitats, whilst delivering sustainable, nutritious food; Dairy UK Chief Executive Dr Judith Bryans gave a presentation on the global dairy perspective and FUW President Glyn Roberts and his daughter Beca Glyn discussed climate change and farming with the environment in mind from a grassroots perspective.

FUW Deputy President Ian Rickman said: "In this webinar we kept the conversation around food production and climate change going, raising awareness amongst consumers and farmers about the issues facing the industry in this context. I thank the panel for their excellent contributions and if you couldn't join us for the event, don't forget it's available online."

The webinar 'Producing food and looking after the environment' is available to watch again on the members section of the website: www.fuw.org.uk/login

"We kept the conversation around food production and climate change going."



“We joined forces with our charities to discuss how they have been able to help over the past 12 months, and explore what we ourselves can do to maintain good mental health.”

The FUW also stood by its commitment to keep the spotlight on mental health issues for as long as it remains a problem in our rural communities. Approaching the fifth year of awareness raising and doing everything we can to help break the stigma, we asked - how are you doing?

Together with the leading farming charities in Wales we took a look at what has changed, how far we have come and what issues still remain. Titled ‘Mental Health- how are you doing?’, the FUW was joined by representatives from the DPJ Foundation, The Farming Community Network, Tir Dewi and the Royal Agricultural Benevolent Institution.

FUW President Glyn Roberts, who chaired the event, said: “The last 12 months have been tough for many of us. Covid-19 restrictions have seen many of us physically separated from friends, family and loved ones. The everyday stress of life, running a farm business and home schooling children added to pressures.

“In addition to that the farming community also has to cope with new Agricultural Pollution regulations, bovine TB, uncertainty of trade deals and is looking at major changes to farming policy. To say we are in the eye of a perfect storm is putting it mildly.

“With all of this going on, we once again joined forces with our charities to discuss how they have been able to help over the past 12 months, what help they need to address the growing demand on mental health services and explore what we ourselves can do to maintain good mental health.”

The webinar ‘Mental health- how are you doing’ is available to watch again on the members section of the website: www.fuw.org.uk/login



Following a survey, over 50% of respondents from a rural area felt that the internet they had access to was not fast and reliable

Following a survey, run by the National Federation of Women’s Institutes-Wales, CLA, Farmers’ Union of Wales, NFU Cymru and Wales YFC, which showed that over 50% of respondents from a rural area felt that the internet they had access to was not fast and reliable, a special digital connectivity event also took place to discuss the findings and the future of digital connectivity for Wales.

The webinar ‘Digital connectivity: Addressing the digital divide between rural and urban areas’ is available to watch again on the members section of the website: www.fuw.org.uk/login

During the virtual show week, which coincided with Farm Safety Week, safety on farms and how farmers can protect themselves and their business was also put under the spotlight at a webinar, hosted by FUW Insurance Services Ltd.

Keynote speakers on the day included Tony Succamore, Sales and Operations Director of FUW Insurance Services Ltd; Georgina Davis, Business Development Manager (Midlands) at British Engineering Services; Health and Safety Executive representative Christopher Maher and Farm safety expert and instructor Brian Rees.

The webinar ‘Protect your business, Protect your family - farm safety under the spotlight’ is available to watch again on the members section of the website: www.fuw.org.uk/login



Safety on farms and how farmers can protect themselves and their business was put under the spotlight



Make your objections to the UK-Australia Trade Deal clear to your MP

Use our easy to use online lobbying tool to make your voice heard in Westminster: www.fuw.org.uk/login



Livestock worrying raised with local MP



THE FUW Caernarfon Branch has raised the issue of livestock worrying and dog attacks with Aberconwy MP Robin Millar following an increase of incidents in recent weeks. Farmers who keep sheep on the Carneddau range in Caernarfonshire have lost close to 20 sheep recently due to attacks by dogs, the MP heard.

Henry Williams of Gwern Gof Isaf, Capel Curig has lost sheep due to dog attacks, as has Elfed Jackson from Braich Tŷ Du, Nant Ffrancon near Bethesda.

Mr Jackson noted: "People just don't realise the stress and heartache such incidents causes us. And even worse is the attitude of many dog owners who are in denial that their dog would do such a thing. I've returned a couple of dogs to their owners recently and just about managed

to get a "sorry" from them. They need to understand the full implications of their dog not being under control when walking on the open mountains like we have here."

Henry Williams added: "It breaks our hearts to have to see the result of an attack by dogs. It's bad enough when one or two have suffered, but when it gets into double figures it's even worse. Added to that stress is then the need to carry the carcasses down from the mountain by hand, which is no easy task when you have the local authority insisting that they are cleared immediately. I'm not sure if they realise what they are actually asking us to do."

Speaking after the meeting, FUW Caernarfon County Executive Officer Gwynedd Watkin, (pictured above), said: "Despite much awareness raising by the Union, other industry bodies and the police, we keep seeing dogs attacking livestock. Not only do the attacks cause suffering or death for the animals, but they also lead to stress and heartache to the owners of the sheep as well as financial implication which can be severe.

"We know that there are 3 types of livestock attack - the escapee, dog exercising off the lead and dogs not under close control - but 99% of the time it's irresponsible dog owners who are at fault, not the dog. With this in mind and the likelihood of a further increase in visitor numbers enjoying our countryside this summer we urge the public to respect our countryside and our livestock. The message is simple - keep your dog on a lead."

Robin Millar stated "Letting animals worry and attack livestock is a crime with dreadful results. Dog owners have to realise their responsibilities and I will be pushing for the law to be reviewed to give police the powers they need to deal with this issue in a more practical way."

FUW Policy Communications Officer Gareth Parry added: "It remains a significant source of frustration for the livestock sector in Wales and the FUW recently met with Rob Taylor QPM following his appointment as Wales Rural & Wildlife Crime Commissioner to discuss the next steps towards tackling all forms of rural and wildlife crime across all of Wales' police forces."

"Not only do the attacks cause suffering or death for the animals, but they also lead to stress and heartache to the owners of the sheep as well as financial implication which can be severe."



**ALED ELLIS
SALE DATES 2021
LOVESGROVE,
ABERYSTWYTH**

SHEEP SALE

(sheep to be penned by 10.30am - start selling at 11am)

- 14th AUGUST
- 28th AUGUST
- 11th SEPTEMBER
- 25th SEPTEMBER
to include 8th Annual Ram Sale
- 9th OCTOBER
- 23rd OCTOBER
- 6th NOVEMBER
- 20th NOVEMBER
- 4th DECEMBER

Machinery sale date to be confirmed

PLEASE NOTE THAT THESE SALE DATES ARE SUBJECT TO WEATHER CONDITIONS AND ENTRIES

YOU CAN ALSO ENTER ON-LINE AT

www.aledellis.com/

click on AUCTIONS/FACEBOOK OR CONTACT THE OFFICE ON

01970 626160

or email joanne@aledellis.com

NELSON SHEEP SALES 2021

FRIDAY 17th SEPTEMBER AT
12.00 NOON

ewe sale

2,500 South Wales Mountain Draft
Ewes & Yearlings

FRIDAY 1st OCTOBER AT
10.30 A.M

RAM SALE

250 South Wales Mountain Rams.

SALE SITE: COED TOP HILL,
GELLIGAER, CF46 6ER.

CATALOGUES ON REQUEST

GLYN DAVIES AUCTIONEER.

TEL: 01443-839234, 07974-813394

E-mail: jglyns@gmail.com

www.nelsonsheepsales.uk

Trefnant Hall wins Grassland Management Award for 2021

THE 2021 All Wales Grassland Management Competition run by the Federation of Welsh Grassland Societies in conjunction with the Royal Welsh Agricultural Society and kindly sponsored by HSBC is a very strongly contested competition; and despite recent circumstances, this year was no exception.

The final victorious nod to a very worthy winner went to FUW member and Powys Grassland Society member: Marc Jones, Trefnant Hall, Berriew, Welshpool; whilst the runner-up award was handed to Cleddau Grassland Society member Richard Morris, Bowett Farm, Hundleton, Pems.

The other two finalists in the competition were Mark Egerton (MW & EM Egerton), Treveddw Farm, Pandy, Abergavenny (members of Monmouthshire Grassland Society); and The Davies Family, Glaspant, Beulah, Newcastle Emllyn (members of Cardigan Grassland Society).

Marc Jones, with the help and support of his father David, runs a herd of 700 Aberdeen Angus dairy cross beef cattle as well as a flock of 500 NZ Romney cross ewes plus 130 retained ewe lambs



FUW member Marc Jones, FWGS Grassland Management Competition winner 2021.

on 194 usable ha (480 acres) of rented land on two units ranging from 185 to 340m (600-1,100ft) above sea level.

Drones and rural crime

by Rhys Evans, Senior Associate at RDP Law



OVER the last decade, there has been a surge in drone usage in Wales. Whilst some drones are incredibly expensive and sophisticated, it is possible for nearly anyone to purchase and operate these devices, at a relatively low cost, with only certain drones requiring the operator to be licensed.

This can be troublesome to landowners who may be concerned with regards to privacy, especially for those drones with high-definition cameras, in rural parts of the country, potentially more vulnerable to trespass, burglaries and other criminal activities.

The primary piece of legislation governing the use of aircraft in the United Kingdom, is the Air Navigation Order 2016 (the "ANO"). Most

importantly, an 'overriding principle' governing any aviation activity is that a "person must not recklessly or negligently cause or permit an aircraft to endanger any person or property". It is a criminal offence to breach the ANO, and the police have recently taken a more active role in investigating incidents relating to drone usage that breaches the ANO. A bill (the Air Traffic Management and Unmanned Aircraft Bill 2019-21) is also currently being considered by Government, which essentially governs an extension to Police powers to tackle illegal drone usage.

In the event that a drone is being used recklessly or negligently that subsequently endangers a person or any property, it is likely to fall within the Police's jurisdiction to investigate such an incident. With respect to 'property', any harm that is caused to livestock (and not necessarily physically) could be a further reason to prompt police investigation. It may be possible to argue that a drone flying over your property amounts to either a civil nuisance or trespass. However, this area of law in the context of drones is highly complex and private civil court action is rarely going to be cost effective in the context of a relatively one-off incident, even if you can find the drone's operator.

The new legislation intends to expand police powers so that if a constable has reasonable grounds for believing that the person is controlling the unmanned aircraft, and has reasonable grounds for suspecting that the unmanned aircraft has been, is, or is likely to be, involved in the commission of an offence, then the constable can require the operator to ground the aircraft, with the power to impose a fine if they refuse to comply.

If you have concerns and have reasonable grounds for suspecting that the drone is involved in the commission of an offence, please contact your local police force who may be able to provide further assistance, especially after the new legislation is enacted. It remains illegal to shoot the drones down, and rural business owners should report sightings instead.

www.farmersmarts.co.uk
01341 422334

DOLGELLAU MARKET 2021



FORTHCOMING SALES OF WELSH MOUNTAIN AND CROSSBRED BREEDING EWES

| | |
|-----------------------------------|--|
| Friday 3 rd September | 1st Annual Sale of 500 Breeding Ewes |
| Friday 10 th September | 2nd Annual Sale of 3,000 Breeding Ewes, also Suffolk & Continental Breeding Rams |
| Friday 17 th September | 3rd Annual Sale of 5,000 Breeding Ewes, also Suffolk & Continental Breeding Rams |
| Friday 24 th September | 4th Annual Sale of 4,000 Breeding Ewes, also Suffolk & Continental Breeding Rams |
| Friday 1 st October | Sale of 1,500 Welsh & Crossbred Ewe lambs, also 2,000 Breeding Ewes |

In conjunction every Friday at 12.00 noon - Weekly Sale of Cast Ewes, Welsh & Crossbred Store Lambs

Further information available from the Auctioneers or on our website/facebook

Llys Meirion, Dolgellau, Gwynedd LL40 1AB • Tel: 01341 422334 • info@farmersmarts.co.uk

Y Bala 01678 520 495 • Tywyn 01654 710 132 • Dolgellau 01341 422 789
www.rgjones-property.co.uk



POLARIS
RANGER
DIESEL



**DURABLE
DEPENDABLE
CAPABLE**

**AVAILABLE FROM
CLWYD AGRICULTURAL.**



DIESEL ENGINE WITH LONGER SERVICE INTERVALS

SMOOTHER TORQUE

MORE GROUND CLEARANCE

INCREASED TOWING CAPACITY

HIGHER PAYLOAD CAPACITY

IMPROVED IN-CAB ERGONOMICS

0% FINANCE | **TWO YEAR WARRANTY** | **EASI**
Subject to terms and conditions and credit approval. European ATV Safety Institute



01745 250117 polaris-clwydagri.co.uk

Clwyd Agricultural Ltd
Terfyn Buildings,
Caerwys Road, Cwm, Dyserth,
Denbighshire
LL18 6HT

CLWYD
— AGRICULTURAL —

We all have worries from time to time

by Kate Miles, The DPJ Foundation Charity Manager



“The things that cause farmers worry and problems are wide ranging; and what is stressful to one person may seem minor to someone else and vice versa.”

AS we look at restrictions around Covid-19 easing, these past 18 months have been extremely challenging for most people, regardless of where you live or what you do. Some people think that farmers haven't been affected: whilst some things such as livestock prices have been good, there have been many other challenges (including the weather, the uncertainty and Covid-19 itself). Also, we encounter those same issues that other people do, just set against the different challenges of farming and living rurally which can really compound them.

I recently spoke at a seminar organised by FUW where I outlined some of these challenges. The things that cause farmers worry and problems are wide ranging; and what is stressful to one person may seem minor to someone else and vice versa.

They range from issues around relationships including when they breakdown, inadequate succession planning, loneliness and isolation, and bereavement and grief to traumatic events such as TB tests and breakdowns, and farm inspections.

These are some of the types of things that lead people to call our Share the Load helpline and also what people cite as their big stressors when they attend our Mental Health Awareness Training course.

We all worry and have worries and we all encounter stress. Sometimes we are better able to manage that stress and sometimes we need help which is where we and the other support that is in place (such as the FUW, Tir Dewi, FCN and RABI) come in. If you have something that is worrying you (however small you might think it is) or you just don't feel yourself please give us a call or text - we won't judge and it might really help: call 0800 587 4232 or text 07860 048 799.

If you would like to help us spread the word and raise awareness, we have bale stickers available (free of charge). Please email kate@thedpjfoundation.co.uk or call/text 07984 169652 to request a sticker.

We're here to help
Contact us

Samaritans: 116 123
or Welsh Language Line
(Llinell Gymraeg): 0808
164 0123

SAMARITANS

RABI:
0808 281
9490

RABI
Supporting Farming Families

FCN:
03000
111 999

FCN THE FARMING
COMMUNITY
NETWORK

DPJ Foundation:
Call 0800 587 4262 /
Text 07860 048799

DPJ THE
DPJ FOUNDATION

Mind Cymru:
Call 0300 123
3393 / Text
86463

Mind Cymru

Tir Dewi:
0800 121
4722

Tir Dewi

Creating a resilient future for farming requires a joined-up approach

by Jude McCann, Chief Executive Officer, The Farming Community Network

I TOOK up my role as Chief Executive Officer with FCN in January 2020, before we knew the Covid-19 pandemic would spread as far and wide as it has and before we could have predicted how it would impact our day-to-day lives and the global economy.

To say it has been a challenging time for everyone would be an understatement, and our charity has had to find new ways of working, supporting volunteers and reaching farmers. As we find ourselves leaving lockdown, now is an important time to reflect on the changes we have experienced and to look to the future in a new light.

With many agricultural shows and events going ahead again, many within our farm community are breathing a sigh of relief that some

degree of normalcy has been returned. However, while there is renewed optimism, we must not forget that there is still great uncertainty in farming, and many farmers and their families are facing a challenging road ahead during this period of transition and transformation.

There is little doubt that farming will continue to experience significant change and restructuring in the coming years. During this time, FCN volunteers across Wales and England are here to support those in need, listening, supporting and connecting people with relevant help available.

During the pandemic, FCN has seen an increase in the number of calls to our Helpline (03000 111 999) from farmers and family members experiencing mental ill-health and concerned about the future. FCN is working hard to ensure volunteers are trained and equipped with the knowledge and skills to support our farm community on this journey.

Having seen the amazing things our industry has achieved over the past year, it has become increasingly clear that there are few limits to what communities can

accomplish when we come together. In spite of restrictions, we have been involved in a wide variety of impactful campaigns with our partner organisations, other charities and supporters of our work.

The rollout of our Rural+ training, developed by FCN, The DPJ Foundation and the National Federation of Young Farmers' Clubs, continues to be successful and feedback is very positive. The training helps to support young farmers' mental health and teaches valuable resilience skills to prepare them for managing change and dealing with uncertain situations. This is topical, considering growing awareness of mental health issues in our industry. It is encouraging to see so many having open conversations and helping to tackle the stigma.

A joined-up approach is necessary to create a resilient farming future for the next generation. We welcome opportunities to collaborate and to share knowledge and expertise to ensure farmers can access the best possible support.

Find out more about FCN: fcn.org.uk
Follow FCN on Twitter and Facebook: @FCNCymru

Cymru Lan

Fallen stock collection services

And all farm plastic recycled

National fallen stock members

and non-members welcome

• Butchery Waste • Cardboard

• Recycle

Chris Bennett

07979 883 650 • 01248 422 220

Cymru_lan@btconnect.com

If you missed FUW's webinar:

Mental Health - how are you doing?

it's available to watch on the members section of the website - www.fuw.org.uk/login



We once again joined forces with our charities to discuss how they have been able to help over the past 12 months and explore what we ourselves can do to maintain good mental health

#FarmingMatters

#AmaethAmByth



FUW office telephone numbers

Anglesey:
01248 750250

Brecon and Radnorshire:
01982 554030

Caernarfon:
01286 672541

Carmarthenshire:
01267 237974

Ceredigion:
01570 424515

Denbigh and Flint:
01824 707198

Glamorgan:
01446 774838

Gwent: 01873 853280

Merioneth:
01341 422298

Montgomeryshire:
01686 626889

Pembrokeshire:
01437 762913

ANGLESEY

anglesey@fuw.org.uk

01248 750250

Menter bach yn wahanol

Ffermwr ifanc o Fôn yw'r cyntaf drwy'r Deyrnas Unedig i ddechrau cynhyrchu ysgytleth llefrith dafad.

Mewn cyfnod o ddeuddeng mis mae Huw Jones o Goedana, Llanerchymedd wedi datblygu'r cynnyrch newydd a bellach mae dau wahanol flas - Siocled a Mefus - ar gael i'w prynu mewn siopau lleol.

Meddai Huw: "Mae'r ysgytleth yn cynnwys ddwywaith cymaint o brotein a llefrith buwch ac mae lefelau uchel o fwynau fel calsiwm yn ddo fo hefyd. Ond mae'r broses wedi bod yn dipyn o her gan fod y gwaith datblygu i gyd wedi digwydd yn ystod pandemig."

Cafodd gymorth mawr gan y ganolfan dechnoleg bwyd yn Llangefni - sy'n rhan o Goleg Menai - wrth arbrofi gyda'r cynnyrch ac yno mae'r ysgytleth yn cael ei brosesu yn wythnosol.

"Dwi wedi bod yn eithriadol o lwcus fod 'na ganolfan fel hyn dim ond pedair milltir o'r fferm ble mae'r defaid yn cael eu godro. Felly o ran yr amgylchedd, mae'r broses i gyd yn digwydd o fewn cylch bychan iawn. Gyda'r holl bwyslais ar ostwng allyriadau carbon a gostwng milltiroedd bwyd mae'r cynllun hwn yn taro'r hoelen ar ei phen.

"Mae'r blas yn hyfryd - ond mae dal dipyn o waith i'w wneud yn trio perswadio rhai pobl i fentro ei flasau. Mae pawb sydd wedi ei flasau yn deud ei fod yn fendigedig," ychwanegodd Huw.

Mae ceisio dysgu am yr ochr farchnata wedi bod yn eithriadol o bwysig hefyd ac i'r perwyl yna mae cymorth gwerthfawr wedi ei roi gan Cywain a gan yr ymgynghorydd bwyd Geraint Hughes.

"Mae'r ochr farchnata - a phethau fel dylunio label, chwilio am boteli addas, chwilio am fusnesau i werthu'r ysgytleth - i gyd wedi bod yn brofiadau newydd a dwi'n dal i ddysgu rhywbeth newydd yn ddyddiol," meddai Huw.

Mae Huw yn godro bron i gant o ddefaid erbyn hyn ac yn parhau hefyd i gyflenwi cwmni Cosyn Cymru sy'n cynhyrchu cawsiau ac iogwrt llefrith dafad.



Y bwriad ydi cynyddu maint y ddiadell eto'r flwyddyn nesa ac edrych am fwy o bosibiliadau ynglŷn â sut i ddatblygu'r busnes.

A young farmer from Anglesey is the first in the UK to start producing milkshakes made from sheep's milk. In a twelve month period Huw Jones from Coedana, Llanerchymedd has developed the new product and now has two different flavours - Chocolate and Strawberry - available to buy in local shops. Huw said: "The milkshake contains twice as much protein as cow's milk and also has high levels of minerals such as calcium. But the process has been challenging as all the development work has taken place during a pandemic."

He has received invaluable assistance from the food technology centre in Llangefni - part of Coleg Menai - by experimenting with the product and where the milkshake is processed every week. "I have been extremely lucky to have a centre like this just four miles from the farm where the sheep are milked. So in terms of the environment, the whole process takes place in a very small cycle. With all the emphasis on reducing carbon emissions and reducing food miles, this really does hit the nail on its head. "The taste is lovely - but there is still a lot of work to be done in trying to persuade some people to try it. Everyone who has tasted it says it is wonderful," added Huw. Trying to learn about the marketing side has also been extremely important and valuable support has been provided by Cywain and food consultant Geraint Hughes. "The marketing side - and things like designing a label, looking for suitable bottles, looking for businesses to sell the milkshakes - have all been new experiences and I'm still learning something new every day," says Huw. Huw now milks almost a hundred sheep and continues to supply Cosyn Cymru who produce cheese and yoghurts from sheep's milk. The aim is to increase the size of the flock again next year and look for more possibilities on how to develop the business.

CADW PLANT YN DDIOGEL AR Y FFERM DROS WYLI AU'R HAF

1. Ni ddylid caniatu i blant fod yn ardal waith y fferm (a dylai plant ifanc fwynhau'r awyr agored mewn ardal ddiogel sydd wedi cael ei ffensio).
2. Dylid cynllunio a goruchwyllo ymweliad unrhyw blentyn o dan 16 ag ardal waith y fferm, ar gyfer addysg neu brofiad i ddatblygu gwybodaeth, gan oedolyn nad yw'n gwneud y gwaith.
3. Mae plant o dan 13 wedi'u gwahardd yn benodol rhag gyrru na mynd ar gefn unrhyw beiriant amaethyddol.

KEEPING CHILDREN SAFE ON FARM DURING THE SUMMER HOLIDAYS

1. Children should not be allowed in the farm work place (and for young children they should enjoy outdoor space in a secure fenced area).
2. Any access to the work area by children under 16, for example for education, or knowledge experience, should be planned and fully supervised by an adult not engaged in any work activity.
3. Children under the age of 13 years are specifically prohibited from driving or riding on any agricultural machine.

Am fwy o wybodaeth, sganiwch yma:
For more information, scan here:



neu, chwiliwch/or, search:
www.hse.gov.uk

**PARTNERIAETH
DIOGELWCH
FFERM CYMRU**
WALES
FARM SAFETY
PARTNERSHIP

BRECON & RADNOR

breconandradnor@fuw.org.uk

01982 554030

'Our Local Talking Bench'

Local YFC clubs in Powys have been challenged to create 'talking benches' by PAVO (Powys Association of Voluntary Organisations), a place in the community where people can sit, chat or just reflect.

At the time of going to press we had heard of three by Erwood YFC, Pontfaen YFC and Rhayader YFC. More details can be found on the DPJ Foundation Facebook page: www.facebook.com/thedpjfoundation

We are looking forward to seeing more of these benches appearing in the future.



ABOVE: Rhayader YFC bench.

ABOVE LEFT: Erwood YFC bench.

BOTTOM LEFT: Pontfaen YFC bench.

CAERNARFON

caernarfon@fuw.org.uk

01286 672541

Pwyllgor Gwaith

Cafodd Pwyllgor Gwaith Sir Gaernarfon noson ddifur iawn yng nghwmni Mabon ap Gwynfor fis diwethaf pan fu iddo egluro'r hyn mae wedi bod yn ei wneud yn ystod ei ddau fis cyntaf yn y Senedd.

Gan nad oedd angen mynd i Gaerdydd yn rhy aml ar hyn o bryd mae'n rhoi'r cyfle iddo gyfarfod gyda mwyr o bobl o'i etholaeth, sef y rhan o'r gwaith mae'n ei fwynhau fwyaf. Eglurodd y drefn ar gyfer gofyn cwestiynau i'r Gweinidogion a sut roedd y gwrthbleidiau wedi cydweithio i sicrhau'r adolygiad presennol o'r rheolau newydd ar gyfer rheoli tail a phiswail. Anogodd ni fel Undeb i gysylltu gydag ef os oeddem angen iddo ofyn cwestiynau ar ein rhan.



The Caernarfonshire Executive Committee had a very enjoyable evening with Mabon ap Gwynfor last month when he explained what he had been doing during his first two months in the Senedd.

As he doesn't need to go to Cardiff too often at the moment it gives him the opportunity to meet more people from his constituency, which is the part of the job he enjoys most. He explained the procedure for asking questions to Ministers and how the

opposition parties have worked together to secure the current review of the new rules for manure and slurry management. He urged us as a Union to contact him if we need him to ask questions on our behalf.

Trin tir - byddwch yn ofalus

Mae angen bod yn ofalus os ydych yn bwriadu trin tir sydd heb ei aredig ers sawl blwyddyn. Rydym wedi dod ar draws fwy nag un achos ble mae aelod o'r cyhoedd wedi cysylltu gyda'r Llywodraeth i gwyno am ffermwyr yn trin tir cyn cael caniatâd i wneud hynny.

Os oes llai na 25% o feillion neu borfeydd tebyg i rhygwellt yn arwynebedd presennol y cae, mae'n rhaid i chi ofyn am y caniatâd priodol cyn gwneud unrhyw waith arno. Cysylltwch gyda'ch Swyddfa Sirol os am fwy o wybodaeth ar y mater.

Care needs to be taken if you intend to cultivate land that has not been ploughed for many years. We have come across more than one case where a member of the public has contacted the Government to complain about farmers cultivating land before being allowed to do so.

If the existing area of the field contains less than 25% clover or ryegrass-like pastures, you must seek the appropriate permissions before carrying out any work on it. Contact your County Office for more information on the matter.

CARMARTHEN

carmarthen@fuw.org.uk

01267 237974

Agricultural update

FUW Head of Policy, Dr Nick Fenwick, (pictured right), joined us recently to provide an update about common land and the fact that the common land register was to be converted into an electronic format. Owners of common land rights were to be given an opportunity during a consultation period to review the database and amend if necessary.

A range of other topics were discussed including Cattle EID, Australia Trade Deal and the implications and potential effects on Welsh farming, Brexit, import export figures, and barriers to trade movements.

Our thanks to Nick for a very informative update.



CEREDIGION

ceredigion@fuw.org.uk

01570 424515

Trade deal open meeting

An open meeting was held via Zoom on Wednesday June 30 to discuss the UK/Australia free trade agreement and its potential implications,

with local MP Ben Lake, (pictured right).

Main issues raised were the uneven playing field of animal welfare and how a glut of imported Australian red meat would effect UK market prices.



Enillwyr Clwb 200 winners

Llongyfarchiadau i enillwyr Clwb 200 Mehefin Ceredigion / **Congratulations to the June 200 Club winners:**

183: Jones, Brynceiro

216: Jones, Minyrhos

73: Williams, Bayliau



GLAMORGAN & GWENT

glamorgan@fuw.org.uk

01446 774838

gwent@fuw.org.uk

01873 853280

Reform of red diesel and other rebated fuels entitlement

Comes into effect: 1st April 2022

Who is affected: Businesses and individuals that currently use gas oil (red diesel) and rebated biofuels

From the 1st of April 2022 the permitted use of rebated gas oil/red diesel is changing. These changes were initially set out in the 2020 budget as a drive to help the government meet its climate change and air quality targets. The full HMRC policy paper can be found by searching "Reform of red diesel entitlements" online.

As of 1st of April 2022, only the following uses will be permitted for rebated gas oil/red diesel:

- for vehicles and machinery used in agriculture, horticulture, fish farming and forestry. This includes allowing vehicles used for agriculture to be used for cutting verges and hedges, snow clearance and gritting roads
- to propel passenger, freight or maintenance vehicles designed to run on rail tracks
- for heating and electricity generation in non-commercial premises - this includes the heating of homes and buildings such as places of worship, hospitals and townhalls; off-grid power generation; and non-propulsion uses on permanently-moored houseboats
- for maintaining community amateur sports clubs as well as golf courses (including activities such as ground maintenance, and the heating and lighting of clubhouses, changing rooms etc.)
- as fuel for all marine craft refuelling and operating in the UK (including fishing and water freight industries), except for propelling private pleasure craft in Northern Ireland
- for powering the machinery (including caravans) of travelling fairs and circuses

All other industries/uses will not be permitted to use rebated gas oil and will need to switch to white diesel.

DENBIGH & FLINT

dinbychflint@fuw.org.uk
01824 707198

Cyfle i drafod gobeithion yr Undeb



Cynhaliwyd cyfarfod o Bwyllgor Gwaith Sir Fflint ar nos Lun 5ed Gorffennaf a daeth Guto Bebb, (*gweler ar y chwith*), Rheolwr Gyfarwyddwr Grŵp UAC atom i roi gair am ei waith o fewn yr Undeb a chael sgwrs gyda'r aelodau am eu pryderon, a chynlluniau a gobeithion yr Undeb yn y dyfodol.

Ar y nos Lun canlynol, 12fed Gorffennaf daeth Guto Bebb i gyfarfod ac aelodau o Bwyllgor Gwaith Sir Ddinbych i roi sgwrs a thrafod fel 'roedd yr Undeb wedi ymdopi mor dda ynghanol cyfnod y pandemig ac edrych ymlaen at weithgareddau'r Undeb yn y dyfodol.

A meeting of the Flintshire Executive Committee was held on Monday July 5 where Guto Bebb, (pictured left), FFW Group Managing Director attended to give a brief account of his work within the Union and to talk to members about their concerns, and plans and hopes for the Union in the future. On the following Monday, July 12, Guto Bebb

met with members of the Denbighshire Executive to give a talk and discuss his work within the Union and how the Union had coped so well with staff working from home during the pandemic. Everyone's looking forward to future activities within the Union.

MONTGOMERYSHIRE

montgomeryshire@fuw.org.uk
01686 626889

Tri Chopa Cenedlaethol wedi'u gorchfygu!

Fel y gwelwyd yn rhifyn mis Gorffennaf Y Tir, cwblhaodd Emyr Wyn Davies, Swyddog Gweithredol Sirol Sir Drefaldwyn ynghyd â 9 arall her y Tri Copa Cenedlaethol gan ddechrau ar 23ain Mehefin 2021.

Dringwyd Yr Wyddfa, Scafell Pike a Ben Nevis mewn 22 awr ac 20 munud gan orffen ar Ddydd Iau 24ain Mehefin 2021.

Bu i'r her godi cyfanswm o £6,155 fel rhan o'r sialens a gaiff ei rannu rhwng DPJ Foundation, Ambiwylans Awyr Cymru a Ronald McDonald House Charities. Ar ran y rhai hynny a gymerodd ran - diolch yn fawr am y rhoddion hael.

As featured in the July edition of Y Tir, FFW Montgomeryshire County Executive Officer, Emyr Wyn Davies, completed the National Three Peaks Challenge together with 9 others starting on June 23 2021. They scaled the peaks of Yr Wyddfa, Scafell Pike and Ben Nevis all in 22 hours 20 minutes finishing on Thursday June 24 2021. A total of £6,155 was raised as part of the challenge which will be divided between the DPJ Foundation, Wales Air Ambulance and Ronald McDonald House Charities. On behalf of the participants - thank you for the generous donations.



Wedi gorffen!

Kira wins prestigious Award

The outstanding achievements of Kira Newey, (*pictured right*), from Newtown College (part of NPTC Group of Colleges) was celebrated as she was awarded the prestigious BTEC Award for Land-based Learner of the Year 2021.

Kira is the daughter of Tony and Jan Newey of Tyn Y Maen, Llandinam who are current FFW Montgomeryshire members. Kira, who already owns a prize-winning Pedigree Clun Forest Sheep flock, has achieved top grades in her HND, is an agricultural lecturer at Newtown College and has recently progressed directly onto a Master's programme at Aberystwyth University.

Her teachers say she was a pleasure to teach, and her classmates also benefited from her dedication and passion for the subject. Very aware of speed of change within the agricultural industry, she chose to study a BTEC in order to further her knowledge and meet the challenges of farming in the 21st century.

Kira said she was so grateful for the nomination, and felt extremely honoured and overwhelmed to be awarded BTEC Land-based Learner of the Year 2021. Gaining this award acknowledges her dedication and enthusiasm to the agricultural industry and the agricultural course and makes all the hard work much more worthwhile.



MEIRIONNYDD

meirionnydd@fuw.org.uk
01341 422298

Pwyllgor Gwaith

Cynhaliwyd cyfarfod o'r Pwyllgor Sirol ar ddiwedd mis Mehefin, gyda Jane Dodds, Aelod Senedd Cymru dros y Democratiaid Rhyddfrydol yn wraig gwadd.

Cafwyd trafodaeth fuddiol iawn ar nifer o bynciau megis rheolau NVZ a'r pryder difrifol ynglŷn â chytundeb masnach gydag Awstralia. Roedd Gareth Parry, Swyddog Cyfathrebu Polisi o'r Brif Swyddfa hefyd gyda ni, ac roeddem yn gwerthfawrogi ei gyfraniad yn fawr.

Roedd tymor Sion Ifans fel Cadeirydd Sirol yn dod i ben, a diolchwyd yn fawr iawn iddo am ei arweiniad doeth a chywir, ac am ei gyfraniad enfawr i'r Undeb.

Etholwyd Edwin Jones, Tymawr, Carrog, yn Gadeirydd, a Gwion Rowlands, Gaergoed, Glanrafon yn Is-gadeirydd, a mynegwyd ein dymuniadau gorau iddynt yn eu swyddi.

A meeting of the County Committee was held at the end of June, with Jane Dodds, the Welsh Liberal Democrat Member of the Senedd as guest speaker. There was a very useful discussion on a number of topics such as the NVZ rules and the serious concern about a trade agreement with Australia. Gareth Parry, Policy Communications Officer from Head Office was also with us, and his contribution was much appreciated. Sion Ifans' term as County Chairman came to an end, and he was greatly thanked for his wise and accurate leadership, and for his enormous contribution to the Union. Edwin Jones, Tymawr, Carrog, was elected Chairman, and Gwion Rowlands, Caergoed, Glanrafon as Vice-Chairman, and we expressed our best wishes to them in their roles.

Cadeirydd newydd i Feirionnydd



O'r chwith, Llywydd Cenedlaethol, Glyn Roberts; Cadeirydd Sirol, Edwin Jones; cyn Gadeirydd Sirol Sion Ifans; a Rheolwr Gyfarwyddwr Grŵp UAC Guto Bebb.

Dechreuodd Edwin Jones ei dymor fel Cadeirydd drwy wahodd Aelod Senedd Cymru Ken Skates i'w fferm. Bu'n gyfle i glywed am fanylion y fferm a'r stoc, a thrafodaeth am faterion yn ymwneud a dyfodol y diwydiant.

Edwin Jones began his term as Chairman by inviting Welsh MS Ken Skates to his farm. It was an opportunity to hear about the farm and stock, and to have a discussion on issues relating to the future of the industry.

PEMBROKESHIRE

pembrokeshire@fuw.org.uk
01437 762913

County officials for 2021/2022

Pembrokeshire has a new team of county officials in place for 2021/2022.

County President - Mr Alun Phillips

County Chairman - Mr Mike Kurtz

County Vice Chairman - Mr Gerwyn Williams

A big thank you must go to our outgoing County President, Mr David Nicholas and County Chairman, Mr Alun Phillips, for agreeing to stay on for an additional 12 months at the start of the pandemic and for all their support and hard work on behalf of members during the last three years.



CPH number up-to-date

Don't forget if you take on or give up any buildings or land for your livestock, you need to ensure that the land recorded against your CPH number is updated accordingly to prevent any problems with movement reporting and animal disease controls.

If you require any assistance with making the required changes through your RPW Online account just get in touch.

Cross compliance - hedge cutting

If you wish to grow a winter arable crop and the normal agricultural practice determines that it is planted before August 31 then you can cut the relevant sides of the hedgerow from August 1.

However, for the rest of you don't forget that you are not allowed to cut hedgerows between March 1 and August 31.

Farm safety - is it worth taking the risk?

34
fatal injuries
in 2020/21

7
of these
fatalities were
in Wales

The
five-year average
for fatal injuries in
the sector now
stands at
28



FUW Deputy President Ian Rickman.



FUW Insurance Services Ltd Sales and Operations Director, Tony Succamore.

THE FUW and FUW Insurance Services Ltd. are urging the farming community to carefully consider the risks on farms as figures released by the Health and Safety Executive (HSE) point to an increase in farm fatalities over the last year.

According to provisional data released by the HSE, agriculture, forestry and fishing recorded 34 fatal injuries in 2020/21, an increase of 13 from the 21 fatalities recorded the previous year. The five-year average for fatal injuries in the sector now stands at 28.

Included in these fatalities were seven fatal deaths in Wales within agriculture, forestry and fishing in 2020/21. The report highlights that, taking account of differing employment levels between sectors, the rate of fatal injury per 100,000 workers is greatest in agriculture, forestry and fishing and waste and recycling.

Speaking from his Carmarthenshire farm during farm safety week (July 19-23), FUW Deputy President Ian Rickman said: "It saddens me that despite efforts to highlight the dangers on farms time and time again, we have still not seen a decrease in these figures and of course they don't include the near misses and life changing injuries.

"Together with our partners in the Wales Farm Safety Partnership, we are working on raising awareness and reducing the risk of harm faced by those in our industry and I urge the farming community to take this problem seriously and really think about whether the risks they are taking are justified."

The FUW, as part of the Wales Farm Safety Partnership, is committed to make farming a safer industry by working together and providing advice and guidance in conjunction with the Health and Safety Executive in order to improve the situation and to save lives on our farms.

Tony Succamore, Sales and Operations Director of FUW Insurance Services Ltd added: "Agriculture is known to be one of the most dangerous professions, which often sees farmers and farm workers working in solitude, challenging weather conditions and in stressful situations.

"The risks on farms are all well-known and readily managed, but all too often farmers and farm workers put themselves in situations where one slip can have life changing or even fatal consequences.

"There are too many people dying on farms across the UK, and I urge the industry not to be complacent - your safety and that of your family must be your priority."

If you missed FUW's webinar:

Protect your business, Protect your family - farm safety under the spotlight

it's available to watch on the members section of the website - www.fuw.org.uk/login



We discussed the future of farm safety in Wales and beyond with industry leading experts and highlighted what steps you can take to protect yourself, your family and business



UAC yn noddi digwyddiad ar-lein Nerth Dy Ben



WRTH i ddigwyddiad mawr yn y calendr amaethyddol adael bwllch ar gymdeithasu ym mis Gorffennaf (wythnos Y Sioe Fawr), gwnaeth un sefydliad cryfder meddwl, dan arweiniad gwirfoddolwyr, gyflwyno digwyddiad ar-lein gyda dau bersonoliaeth chwaraeon eithafol byd enwog i ysbrydoli'r gymuned wledig.

Mi wnaeth y gŵr sy'n dal teitl Cneifiwr Peiriant Gorau'r Byd, Richard Jones o Glyndyfrdwy a'r rhedwraig antur eithafol a chyflwynydd teledu, Lowri Morgan ymuno â'r darlledwr profiadol Nic Parry yn Stad y Rhug i rannu'r dygnwch, y dyfalbarhad a'r nerth meddyliol sydd eu hangen arnynt i gyflawni'r heriau corfforol yma.

Roedd y digwyddiad Cymraeg ar-lein ar nos Fercher, 21 Gorffennaf yn cael ei drefnu gan Nerth Dy Ben, sefydliad gaiff ei redeg gan wirfoddolwyr sy'n ceisio rhoi llwyfan i unigolion rannu profiadau cadarnhaol, yn y Gymraeg, am fyw a gweithio yng nghefn gwlad Cymru.

Mae Nerth Dy Ben yn ddiolchgar i Undeb Amaethwyr Cymru a Stad y Rhug am eu nawdd ac i Fenter Iaith Sir Ddinbych a'r Bwrdd Gwlân am eu cefnogaeth.

Mae modd gwyllo'r digwyddiad ar dudalen Facebook neu YouTube Nerth Dy Ben neu ymweld â'r wefan: www.nerthdyben.cymru

AS a major event in the farming calendar left a gaping hole for social gatherings in July (RWAS), one volunteer led healthy minds organisation in rural Wales introduced two world class extreme sport personalities to an online event to inspire the farming community. Number 1 World Machine Shearing titleholder, Richard Jones from Glyndyfrdwy and world-class extreme endurance runner and TV presenter, Lowri Morgan joined experienced broadcaster Nic Parry at Rhug Estate to share the endurance, resilience and mental strength needed to achieve these physical challenges.

The Welsh on-line event, which took place on Wednesday July 21 was organised by Nerth Dy Ben, a volunteer-run organisation that aims to give individuals a platform to share positive experiences, in Welsh, about living and working in rural Wales.

Nerth Dy Ben is grateful to event sponsors, FUW and Rhug Estate, together with the support of British Wool and Menter Iaith Sir Ddinbych.

You can watch the event on the Nerth dy Ben Facebook page or YouTube channel or go to www.nerthdyben.cymru

The farming programme you won't want to miss!

EFFICIENCY, best practice, compliance and saving time and money are the driving forces behind Farming Connect's latest venture, a dedicated half-hour, monthly tv programme for farmers and foresters in Wales.

Tune into YouTube from Monday, July 26 onwards, search for 'FCTV' and find

out how some of the most progressive Welsh farmers, including those from the Farming Connect demonstration sites, are preparing for the future - a future where farming efficiently, sustainably and profitably are the key drivers for change.

The new programme will feature a mix of dairy, beef and sheep farmers from all parts of Wales as they share their knowledge and experiences and take you on a tour of their businesses, in particular those areas where they are making the greatest improvements or utilising some of the newest innovation and technologies. Some of the featured farmers have also set up diversified enterprises, so this is a great opportunity to learn at first-hand how these new ventures can contribute to the overall profitability of the main farm business and why turning an idea or interest into a success story can provide a valuable stream of income.

Each new episode will be uploaded on the last Monday of every month. You can view any of them at a time to suit yourself and as often as you like. Each one will focus on a particular theme, with infrastructure scheduled for July, innovation for August and diversification in September. Keep an eye on the Farming Connect website and social media channels to find out what's in store for the autumn and winter months.



MEAT MATTERS

Looking back - and forward

by Catherine Smith, HCC Chair

IN July, I would have loved to have been at the Royal Welsh Show, meeting FUW members and discussing the key issues that affect us all.

We did hold our HCC breakfast virtually, and it was a chance to reflect on the period of Covid as well as the opportunities ahead. It's been a time in which Wales's farmers have responded admirably to the challenges we've faced.

As the pandemic initially caused great market instability, HCC worked with the supply chain and retailers to bring strategy to an unstable marketplace. The results speak for themselves. Compared to 2019, spending on lamb is up 19% and beef is up 14%. We are currently working to turn these new purchasers, such as younger families, into regular buyers.

The latest consumer data shows interesting trends about what these groups want. They want to know more about where their food is coming from. They like the story of Wales' network of family farms and they tell us they want to back local farmers. With HCC's help, retailers are supporting this agenda, with a number of new lines in supermarkets and new promotional initiatives lined up.

The second half of 2021 will see a series of high-profile global environment summits, so it's vital that we shout about the positive background story of Welsh red meat.

HCC will bang the drum even louder for the Welsh Way of sustainable livestock farming. Customers need to know that we share their concerns about the environment, that farming in Wales is very different



from the intensive industrial models in some countries, and that it also underpins our Welsh way of life, traditions, culture and communities.

Sustainability is an economic as well as an environmental concern. Alongside a critical mass of production, exports are vital to the wellbeing of this industry. During the challenges of Covid we've managed to retain many markets and build new ones. In the Middle East alone, exports of Welsh Lamb have grown 500 per cent in the last two years.

There are still unknowns to be confronted, such as the impact of new Free Trade Agreements. Fair competition is fine, providing all play by the same rules and produce to the same standards. Our producers and customers will not tolerate any

erosion of standards.

But there are huge opportunities as we emerge from the uncertainty of Brexit and Covid.

Wrth i HCC edrych nôl ar frechwast rithwir y Sioe Frenhinol, mi roedd yn gyfle i adlewyrchu ar gyfnod Covid yn ogystal â'r cyfleoedd o'n blaenau. Mae wedi bod yn gyfnod lle mae ffermwyr Cymru wedi ymateb yn rhagorol i'r heriau rydyn ni wedi'u hwynebu. Gan fod y pandemig wedi achosi ansefydlogrwydd mawr yn y farchnad i ddechrau, bu HCC yn gweithio gyda'r gadwyn gyflenwi a manwerthwyr i ddod â strategaeth i farchnad ansefydlog. Mae'r canlyniadau'n siarad drostynt eu hunain. O'i gymharu â 2019, mae'r gwariant ar gig oen i fyny 19% ac mae cig eidion i fyny 14%. Ar hyn o bryd rydyn yn gweithio i droi'r prynwyr newydd hyn, fel teuluoedd ifanc, yn brynwyr rheolaidd.

PROPERTY MATTERS

Diversifying or developing your business?

by Kathryn Williams, Director, Davis Meade Property Consultants

Welsh Government - Rural Business Investment Scheme - Non Agricultural - Window 2

The application window opened on July 5 2021 and closes on August 20 2021.

RBIS (Non-Agri) covers capital investments costs and supports projects in Wales that contribute to one or more of the following:

- the diversification of the rural economy
- the development of the supply chain for natural products
- increasing the productivity, efficiency and competitiveness of rural businesses

The scheme is open to existing and start up Non-agricultural micro and small enterprises including farmers diversifying into non-agricultural activities.

The scheme is open to applications from individuals wishing to start a new non-agricultural business and new/existing sole traders and/or businesses already involved in or wishing to diversify into non-agricultural activities.

The application will be assessed in two stages. The first stage will be an assessment and scoring against the published selection criteria, and if selected your application will be subject to a full appraisal. The Welsh Government's Rural Communities - Rural Development Programme 2014-2020 - Focus Area Six looks at facilitating diversification, creation of new small enterprises and job creation.

Support under this scheme can cover tangible assets such as land, buildings, machinery and equipment and intangible assets such as computer software, patent rights and licences and technical and consultancy fees.

The maximum grant rate for any individual investment project is 40% of the total eligible costs. The maximum grant threshold per undertaking for any individual investment project is £50,000, and the minimum is £5,000. Applications for the RBIS (Non-Agri) will be via Rural Payments Wales (RPW) Online only.

For further information or to discuss your proposal in more detail please contact Kathryn Williams, Davis Meade Property Consultants via kathrynwilliams@dmpcuk.com

Llywodraeth Cymru - Y Cynllun Buddsoddi mewn Busnesau Gwledig - Anamaethyddol - Ffenestr 2. Bydd y cyfnod ymgeisio yn agor ar 5 Gorffennaf 2021 ac yn cau ar 20 Awst 2021. Mae'r RBIS (Anamaethyddol) yn cyfrannu at gostau buddsoddi cyfalaf ac yn cefnogi prosiectau yng Nghymru sy'n cyfrannu at un neu ragor o'r canlynol: arallgyfeirio'r economi wledig, datblygu'r gadwyn gyflenwi ar gyfer cynnyrch naturiol, gwneud busnesau gwledig yn fwy cynhyrchiol, effeithiol a chystadleuol. Mae'r cynllun yn agored i geisiadau gan unigolion sy'n dymuno cychwyn busnes nad yw'n amaethyddol ac unig fasnachwyr presennol/newydd a/neu fusnesau sydd eisoes yn ymwneud â neu'n dymuno arallgyfeirio i weithgareddau nad ydynt yn amaethyddol. Am wybodaeth bellach neu i drafod eich cais yn fwy manwl, cysylltwch â Kathryn Williams, Davis Meade Property Consultants trwy kathrynwilliams@dmpcuk.com



MERCHED MEWN AMAETH

Cystadlaethau yn y Sioe Rithiol

gan Tegwen Morris, Cyfarwyddwraig Cenedlaethol, Merched y Wawr

WEL mae wedi bod yn fis prysur a difyr iawn - diolch i'r 168 o gystadleuwyr a wnaeth ymgeisio yng nghystadlaethau Merched y Wawr yn y Sioe Rithiol - mae'n braf medru nodi mae dyma'r buddugwyr:

Crefft - Anifail: 1af - Meinir Roberts, Cangen Llwyndyr, Rhanbarth Dwyfor

Crefft - Eitem wedi Ailgyrchu neu Uwchgyrchu: 1af - Anwen Hughes, Cangen Prestatyn, Rhanbarth Colwyn

Coginio - Te Prynhawn: 1af - Anita Appleton, Cangen Gorseinon, Gorllewin Morgannwg

Ffotograffiaeth - 'Natur': 1af - Magi Roberts, Cangen Abersoch, Rhanbarth Dwyfor (*gweler y llun ar y dde*)

Fideo - 'Am Dro': 1af - Beti Miller, Cangen Nantcol, Rhanbarth Meirionnydd

Diolch arbennig hefyd i'r tair mam a merch a rannodd eu hanesion difyr, eu gwledigaeth ar gyfer y dyfodol ac ambell stori ddigri a dwys o'u profiadau yn y Sioe dros y blynyddoedd. Ydym, rydym i gyd yn colli y cymdeithasu a'r gwmniaeth yn y Sioe ond ar yr un pryd yn eithriadol o falch o'n cymunedau gwledig am ddyfalbarhau.

Diolch felly i Eirwen ac Eiry o Langwyrton, Margiad a Catrin o Harlech a Chorwen ac i Eurgain ac Eiddwen o Lansannan. Cofiwch edrych ar wefan CAFC neu ar gyfryngau cymdeithasol Merched y Wawr i wyllo eu ffilmiau gwych. Edrychwn ymlaen yn awr i Urddo ein Llywydd Jill Lewis ac i weithgareddau y tymor newydd.

It's been a very busy and enjoyable month preparing for the virtual Royal Welsh Show. We all miss the opportunity to socialise at the show, but at the same time we must be proud of the way our rural communities have persevered throughout everything.



Why dung beetles are a farmer's best friend?

by Dr David Cutress, Farming Connect Knowledge Exchange Hub, IBERS, Aberystwyth University



“They remove dung from pastures thus preventing further growth from being hindered and removing sources of pest fly and parasite habitat.”

THE beetle subgroup Scarabaeoidea are more commonly known as dung beetles. Whilst you might instantly think of scarab beetles rolling balls of dung in desert landscapes, these are not the only type of dung beetles around. In fact, in the UK we have around 60 species of dung beetles and lack ‘roller’ beetle varieties entirely.

Instead, the UK is home to ‘tunnellers’ which tunnel underground taking dung with them to lay their eggs in and supply nutrients to their larvae and ‘dwellers’ which nest within or immediately below dung piles doing the same. This dung is full of nutrients that have not been fully utilised by wild/livestock animals but are essential for beetles and other decomposers to thrive.

These beetles provide several key services which benefit the ecosystem as well as farmers directly. They remove dung from pastures thus preventing further growth from being hindered and removing sources of pest fly and parasite habitat. They cycle nutrients and organic matter back into soils whilst aerating them allowing dung nutrient access for other decomposers (like earthworms).

Also beetles inherently carry mites which predate on the eggs of dung flies reducing impacts of fly discomfort and disease on livestock. Models in the UK suggest that dung beetles, through reducing diseases

and pests and improving nutrient cycling, may be saving the cattle industry £366 million annually and that if dung beetles were removed from a habitat the accumulation of dung would remove 4.8% of pasture availability each year.

With 25% of dung beetles currently being ‘Nationally Rare’ how can farmers and agriculture as a whole encourage them? Most importantly, all dung beetles need dung, so crop farmers should be encouraged to incorporate organic manure into their fertilisation strategies or even consider mixed grazing strategies.

For livestock farmers, it is important to provide dung year-round for beetles, this can mean simply keeping a few animals out on pasture over winter periods. Finally, a big factor that is detrimental to dung beetles is the use of antimicrobial treatments (particularly antiparasitic) on livestock as traces of these compounds remain in the dung, particularly if animals are overdosed or dosed regularly rather than via targeted treatments.

Farmers can help by actively faecal egg counting before treating and performing regular health assessments, manually or via precision technologies, to reduce the need for antimicrobial treatments. Not only could this benefit beetle populations but also reduce farm treatment costs and increase productivity.

Selling British wool to the consumer

As part of its consumer focused marketing strategy British Wool have launched a consumer facing e-commerce website. The website sells an array of British wool rich products including clothing, duvets, pillows, knitting yarn, insulation and even dog beds direct to the consumer.

Graham Clark, Director of Marketing, explains: “This is a very exciting development and one that will help us to drive real demand for British wool products with the consumer. We are initially working with 10 of

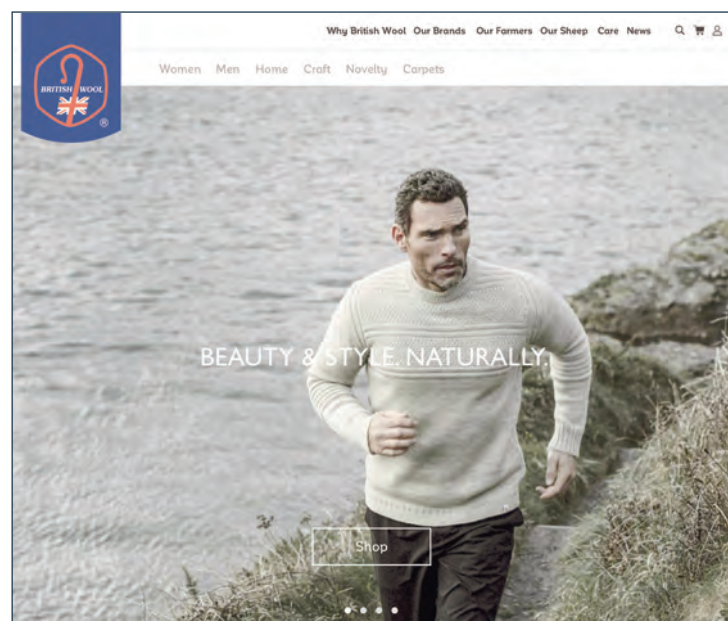
our licensee partners and plan to increase this as we develop the product offering over the coming months.”

As well as driving demand for products made from British wool the organisation will also receive a commission on every sale made through the site. This additional revenue will be returned to British Wool’s producers.

The site will be a key part of British Wool’s activities moving forward, Clark explains: “We are constantly asked by consumers where they can buy British wool products, this site will allow us to direct them to a destination that we know only sells genuine British wool products. We plan to integrate the site into our social media plans, we have over 114,000 followers who are highly engaged giving us an ideal audience to target.

“Our current website also receives around 14,000 unique visitors every month and an increasing proportion of the visitors are consumers looking for information on British wool products.

“We very much see the new site becoming the number 1 destination in the UK for genuine British wool products, helping us drive sales and demand, and ultimately increasing the returns our producers receive for their wool.”



“We very much see the new site becoming the number 1 destination in the UK for genuine British wool products, helping us drive sales and demand.”

Give blood and help save lives in Wales

FUW members are being called upon to help patients in need by giving blood with the Welsh Blood Service.

Across Wales over 9,000 donations of blood and blood products are needed each month. Despite the pandemic, donations are still needed daily by hospitals to treat patients with a range of conditions, including mothers and babies during childbirth; cancer patients receiving chemotherapy as part of their treatment; and by patients involved in emergencies.

One donation has multiple uses as it can be split into three products red cells, platelets and fresh-frozen plasma, meaning one donation can save or improve up to three adults or six babies lives. Appointments are available at over 50 locations throughout Wales in July and August.

Director of the Welsh Blood Service, Alan Prosser said: “Everyday around 350 donations are needed to help the 20 hospitals in Wales we supply. We’ve always had a

great support from our donors but we’re hopeful that more people will consider becoming blood donors themselves.

“As a Service, we rely on the generosity of people living in Wales to provide vital donations to patients. By giving up just one hour of your time, you have a unique opportunity to make a difference to people in your community and beyond. Additional safety measures have also been introduced at the donation sessions, social distancing guidelines are followed, all staff wear PPE and every item is cleaned between use.

“If you’ve never donated before, why not try something incredible this week - book to donate at one of the sessions in your local area and become a lifesaver,” Alan added.

If you are aged between 17 and 66, book a lifesaving donation at: <https://wbs.wales/JFUW> or call 0800 252 266 today.

Corbett Williams & Sons
cardigan4x4.co.uk
SALES | SERVICE | SPARES

4x4 ESTATES

16/66 LANDROVER DISCOVERY 4 GRAPHITE AUTO (LOW R/TAX) 255 BHP 3.0 LTR T/D 44000 MLS
16/66 MITSUBISHI SHOGUN SG3 7 SEAT AUTOMATIC LEATHER ETC 187 BHP 3.2 ONLY 21000 MLS
15/15 FORD KUGA TITANIUM A/CON LEATHER 6 SPEED 180 BHP 2.0 LTR TURBO/D 54000 MLS
14/64 LANDROVER FREELANDER 2 SE-TECH LEATHER 158 BHP 6 SPEED 2.2 TURBO/D 48000 MLS
14/64 HYUNDAI IX 35 PREMIUM CRDI 5 DOOR A/CON LEATHER 6 SPEED 134 BHP 2.0 LTR TURBO/D 52000 MLS
14/14 MITSUBISHI SHOGUN SG3 7 SEAT AUTO LEATHER (LOW R/TAX) 197 BHP 3.2 T/D 59000 MLS
14/14 FORD KUGA TITANIUM A/CON LEATHER 6 SPEED 163 BHP 2.0 TDCI TURBO/D 55000 MLS
14/63 LANDROVER FREELANDER 2 GS LEATHER A/CON 6 SPEED 158 BHP 2.2 LTR TURBO/D 43000 MLS
13/63 AUDI Q3 S/LINE TDI QUATTRO AUTO LEATHER A/C CAMERA 177 BHP 2.0 LTR TURBO/D 62000 MLS
12/62 LANDROVER FREELANDER 2 GS AIR/CON ETC 6 SPEED 158 BHP 2.2 TURBO/D ONLY 36000 MLS
12/12 VOLKSWAGEN TIGUAN S E BLUETECH 4 MOTION LEATHER A/C ETC 140 BHP 2.0 LTR T/D 55000 MLS
11/61 HONDA CRV -ES 5 DOOR AIR/CON LEATHER ETC 6 SPEED 148 BHP 2.2 TURBO/D 48000 MLS
10/10 JEEP GRAND CHEROKEE S LIMITED (AUTOMATIC) LEATHER ETC 237 BHP 3.0 LTR TURBO/D 72000 MLS
09/09 CITROEN C-CROSSER VTR HDI 7 SEAT LEATHER A/CON ETC 156 BHP 2.2 TURBO/D 56000 MLS
07/57 LANDROVER DISCOVERY 3 GS 7 SEAT AIR/CON ETC 6 SPEED 188 BHP 2.7 TURBO/D 91000 MLS
07/56 DAIHATSU TERIOS S 5 DOOR AIR/CON ETC 1.5 PETROL ONLY 47000 MLS
06/56 LANDROVER DISCOVERY 3 TDV6 AIR/CON ETC 6 SPEED 188 BHP 2.7 TURBO/D 77000 MLS
06/56 DAIHATSU TERIOS S E AUTOMATIC 5 DOOR AIR/CON ETC 1.5 PETROL ONLY 42000 MLS
06/06 SUZUKI JIMNY J1X PLUS 3 DOOR A/CON LEATHER ETC 85 BHP 1.3 PETROL 83000 MLS
05/55 JEEP CHEROKEE CRD SPORT 5 DOOR A/CON ETC 6 SPEED 163 BHP 2.8 TURBO/D 79000 MLS
05/55 JEEP CHEROKEE CRD SPORT 5 DOOR A/CON ETC 6 SPEED 163 BHP 2.8 TURBO/D 67000 MLS

4x4 COMMERCIALS +VAT

17/67 MITSUBISHI L 200 BARBARIAN D/CAB CANOPY A/C ETC 6 SPEED 178 BHP 2.4 TURBO/D 34000 MLS
17/16 ISUZU D/MAX YUKON DOUBLE/CAB CANOPY 6 SPEED 163 BHP 2.5 TWIN TURBO/D ONLY 32000 MLS
15/65 FORD RANGER LIMITED TDCI DOUBLE/CAB LEATHER 6 SPEED 200 BHP 3.2 TURBO/D 45000 MLS
15/65 FORD RANGER LIMITED TDCI D/CAB LEATHER CANOPY 6 SPEED 200 BHP 3.2 TURBO/D 54000 MLS
13/63 LANDROVER DEFENDER COUNTY SPEC A/CON ALLOYS 6 SPEED 122 BHP 2.2 T/D ONLY 32000 MLS
11/11 ISUZU RODEO DOUBLE/CAB PICK UP AIR/CON CANOPY 136 BHP 2.5 TURBO/D ONLY 44000 MLS
11/60 FORD RANGER WILDTRAK DOUBLE/CAB A/CON 156 BHP 3.0 LTR TURBO/D 71000 MLS
06/06 FORD RANGER THUNDER DOUBLE/CAB A/CON LEATHER ETC 110 BHP 2.5 TURBO/D 76000 MLS
06/55 LANDROVER DEFENDER TD5 TRUCK CAB 122 BHP 2.5 TURBO/D 101000 MLS
05/05 JEEP CHEROKEE CRD PIONEER VAN AIR/CON ETC 163 BHP 6 SPEED 2.8 TURBO/D 63000 MLS
03/53 LANDROVER DEFENDER 90 TD5 HARD/TOP 122 BHP 2.5 TURBO/D 145000 MLS

CARS/VANS ETC

18/68 PEUGEOT BOXER 335 PRO L2 H2 BLUE HDI VAN S/DOOR 2.0 LTR T/D ONLY 19000 MLS
16/16 NISSAN JUKE 5 DOOR TEKNA AIR/CON LEATHER ETC 1.5 DCI TURBO/D 59000 MLS
16/65 PEUGEOT BIPPER 75 PROFESS IONAL-NAV VAN A/C ETC 1.5 TURBO/D ONLY 49000 MLS
14/14 RENAULT TRAFIC SL27 DCI PANEL VAN AIR/CON ETC 2.0 TURBO/D ONLY 42000 MLS
13/63 PEUGEOT PARTNER 850 S L1 HDI VAN SIDE/DOOR A/C 1.6 TURBO/D ONLY 42000 MLS
06/06 FIAT DOBLO DYNAMIC M-JET 5 SEAT ESTATE 1.9 DIESEL 117000 MLS

WE CAN SUPPLY MOST MAKES AND MODELS OF NEW 4X4 VEHICLES PLUS OTHER VEHICLES ALWAYS AVAILABLE
STATION GARAGE, CARDIGAN SA43 3AD

Tel: 01239 613164

Isuzu's new D-Max to take on pick-up pack leaders

by Huw Thomas, Vice Chairman, Welsh Motoring Writers

DUE to Covid the new D-Max reached dealerships at the end of March before the UK press introduction could be held. It also coincided with a major market upheaval.

Mitsubishi had announced a withdrawal from Europe but then Nissan said it would not bring the new Navara here post closure of its Barcelona plant. Projected sales could not justify the expense of meeting increasingly onerous EU legislation.

Current L200 and Navara will stay on sale while stocks last - L200 until the Autumn, say. Stocks of Barcelona Navaras will last a little longer (Spring 2022 perhaps). Now only four are left standing: Ford Ranger; Toyota Hilux; D-Max; SsangYong Musso.

So, with everything to play for, Isuzu's latest D-Max majors on a stronger chassis (improved side impact resistance), re-worked suspension, new body and plusher cabin together with a raft of safety and connectivity features. Suspension: independent front and leaf sprung rear as usual but "redesigned" to improve ride.

ADAS (Advanced Driver Assist Systems) brings Autonomous Emergency Braking, Traffic Sign Recognition, Intelligent Speed Limiter and Lane Departure deterrence. Double Cabs add Rear Cross Traffic Alert, Blind Spot Monitor, Emergency Lane Keeping. New D-Max is the first pick-up to obtain a full 5-Star result in the, now stricter, Euro NCAP safety tests.

The 1.9 litre, 4-cylinder, 164ps Turbo Diesel engine with 360nm of torque is a carry-over from the previous model but now requires AdBlue to meet the latest Euro 6D regulations. Transmission: 6-speed manual or auto.

Good to see a manual gearbox across the range. There has been a drift to autos over the last decade but 2020 split was 71%-29% man-auto (2019 - 66%-34%).

A quarry in the Derbyshire Peaks served as the off-road venue with road routes for on-tarmac assessment. Bright sunshine that day was good for enjoying the scenery but meant dry conditions so a wet weather appraisal will have to wait.

The 4x4 system is familiar. High and Low Ratios via a transfer box: rear wheel drive only on-road but a choice of 4x4 High or Low Ratio off-road. All but the basic models have a Rear Differential Lock (push-button) selectable up to 5-mph in 4x4LR with auto-disengage at 19-mph. Otherwise, there's the usual array of electronic aids - stability (with trailer anti-sway), traction, Hill Start/Hill Descent Control, etc.

The D-Max dealt with the quarry's 'obstacle course' effortlessly, as expected. Its Diff Lock did seem to be a more overt asset 'in extremis' than a Limited Slip Diff would have been. Variable weight steering and a lighter clutch (manual variants) did make the going smoother and far less tiring in traffic.

As before, payload capacity is 1t+ for VAT purposes with a braked trailer maximum of 3.5t. Nonetheless vehicle weight is below 2,040kg (all types) so subject only to passenger car (not CV) speed limits.

Ride and roadholding on-road have improved but a poor road surface does become apparent. The improvement achieved however together with a higher quality interior makes for a comfortable cabin environment. Steering wheel adjusts for both reach and rake. Cup-holders abound as does storage for a broad range of in-vehicle items.

Outside of Europe, the D-Max is available with a 3.0-litre, 4-cyl engine. The business case for that here unfortunately just does not stack up. The 1.9-litre performed quite well on the rural roads of the Peak District but the vehicles were unladen.

Demand for the new Isuzu is outstripping supply already, it is said, and there's a waiting list. The UK target of 5,000 units this year seems in the bag with a predicted 10,000pa ahead of the 2025 target. The company does feel the 'wind in its sails' and believes it has a product strong enough to take on the pick-up pack leaders.

FUW members can receive discounts off the range of All-New D-Max models. Contact your local county office for more details



Isuzu D-Max.

Model Range: "Business/Utility" (4x2/4x4) Single, Extended or Double Cab. "All-Purpose": DL20 or DL40 (Diff Lock) 4x4 Double Cab. "Adventure": V-Cross 4x4 DC. Price Range: £21,009 - £32,759 (excl VAT); £25,145 - £39,245 (Incl VAT). UK Sales 2020: Ranger (13,097); Hilux (5,927); L200 (5,456); Navara (4,138); D-Max (3,154).

Facts & Figures: 112mph; 0-62mph 12.7-13.0-sec; MPG 30.7-33.6 (WLTP Combined); Road Tax (LCV TC39-£275pa); Ins Grp 50D; Wading Depth 800mm; Warranty 5-yrs/125,000 miles.

WALES LONGEST AND LARGEST SUPPLIER OF 4 DOOR PICK-UPS



TOUGH, RELIABLE AND A LOT OF FUN!



KIOTI MECHRON

SIX SEATS FOR COMFORT & SAFETY OF ALL PASSENGERS. IDEAL FOR A FAMILY FARM, CARAVAN PARK OR A SHOOTING RANGE. TWO YEAR WARRANTY, 12" GROUND CLEARANCE, WIDEST CARGO BED IN IT'S CLASS.

WE WILL BUY YOUR 4X4



67 MITSUBISHI SHOGUN BARBARIAN 3.2 AUTOMATIC COMMERCIAL ONLY 19,000 MILES!! IMMACULATE

- 4 DOOR PICK-UPS WITH VAT @ 20%
- FORD RANGER, WILDTRAK, 2.0, 10 SPEED AUTO, FULLY LOADED WITH EXTRAS.
 - 70 FORD RANGER, 2.0 LIMITED ECOBLUE AUTO, 8,100 MILES.
 - 70 NISSAN NAVARA, NP300 TEKNA, MANUAL, 5 YEAR WARRANTY, 3.5 TONNE TOWING CAPACITY.
 - 16 ISUZU DMAX FURY, RED, NO VAT, LOCALLY OWNED.
 - 14 NISSAN NAVARA, TEKNA, ONLY 58,000 MILES, ONE OWNER, SERVICE HISTORY + DEMO.
 - 59 MAZDA BT500, LOCALLY OWNED, NEW MOT.

- LAND ROVER COMMERCIALS**
- 14 DEFENDER, 110 LWB COUNTY, DOUBLE CAB, ONE OWNER FROM NEW, SERVICE HISTORY.
 - 63 DEFENDER, 90 HARD TOP, ONE OWNER + DEMO, 27,000 MILES.
 - N DEFENDER, 90, LOCAL, ONLY 77,000 MILES WITH NEWLY FITTED GALVANIZED CHASSIS, NO VAT.
- TOYOTA PICKUPS - SUPPLIED BY US**
- HILUX INVINCIBLE 3.5 TONNE TOWING, 5 YEAR WARRANTY.
 - 16 HILUX INVINCIBLE 3.0 AUTO, 26,000 MILES.
 - 65 HILUX INVINCIBLE 3.0 ONLY 19,000 MILES.
 - 65 HILUX INVINCIBLE X, LOCAL, NO VAT.
 - 62 HILUX HL2, ONE OWNER + DEMO, ONLY 48,000 MILES.
- OTHER**
- 17 MITSUBISHI SHOGUN, SWB, AUTO, ONLY 21,000 MILES.
 - 16 HYUNDAI TUCSON, PREMIUM, CRDI AUTO, FULL SERVICE HISTORY, ONLY 37,400 MILES.
 - 16 MITSUBISHI SHOGUN, 3.2 WARRIOR, AUTO, IN BLACK.
 - 13 KIA SPORTAGE, 2.0 CRDI, LOCALLY OWNED.
 - 11 LAND ROVER RANGE ROVER, SPORT, 3.0 TDV6 HSE LOCALLY OWNED, IN BLACK WITH BLACK INTERIOR.
 - 55 MITSUBISHI SHOGUN, ELEGANCE, LOCALLY OWNED.
- SSANGYONG**
- 17 REXTON, W 2.2 ELX AUTO, BALANCE OF 5 YEAR WARRANTY, HIGHEST SPEC, MINT CONDITION.
 - 66 TIVOLI, ELX 1.6 DIESEL, ONLY 13,000 MILES, WITH SERVICE HISTORY, £30 A YEAR TAX.
 - 16 TIVOLI, 1.6 DIESEL IN RED, ONE LADY OWNER, FSH, £30 TAX.
 - 63 KORANDO, EX AUTO, ONE LOCAL OWNER, 31,000 MILES.

High Noon Garage Whitmill Carmarthen Carm SA32 7EN 5 MINUTES FROM CARMARTHEN

01267 290 900

www.GERAINTJONES4X4.co.uk

WE OFFER SALES • SERVICING • PARTS & ACCESSORIES

SALES TEAM ASK FOR: Marie, Gavin or Diane
STORES & SERVICE TEAM ASK FOR: Beryl, Marie or Gavin

2 METRES SOCIAL DISTANCING | TRACK & TRACE | MASKS MUST BE WORN

OPENING HOURS
MONDAY - FRIDAY 8.30 - 5.30
SATURDAY 8.30 - 3.00
OUT OF HOURS APPOINTMENTS AVAILABLE

INDEPENDENT TOYOTA HILUX SPECIALIST
Models portrayed for illustration purposes only. Details correct at time of going to press. All commercials +Vat @20%.

FULLY UTILISE YOUR FORAGE THIS AUTUMN & WINTER.

PeL™
DATAMARS

We used the three-reel PEL grazing kit for the first time to strip graze our ewes on stubble turnips with the aim of increasing utilisation of the crop. We were so impressed with the ease of use of the kit, and the solar energiser was 100% reliable, even on snowy and cloudy days.

Hugh, South Wales

DEI WILLIAMS
07507 611 195
North Wales

WYN JAMES
07557 147 151
Mid & West Wales

JULIETTE EATWELL
07535 552 871
South Wales

CARWYN MORGAN
07805 041 637
Mid & South Wales

JUSTIN REES
07870 517 729
Shropshire & North Wales

KIWIKIT WELSH OFFICE
01239 213120

JOHN DAVIES
07971 262 772
West Wales



FREE
SWARD STICK

PeL™
DATAMARS
#morefromgrass
KiwiKit ROXAN

| cm | Spring Dec-12 | Summer Dec-12 |
|----|------------------|------------------|
| | (kg DM per ha) | |
| 15 | 3.950 | 3.820 |
| 14 | 3.920 | 3.740 |
| 13 | 3.810 | 3.550 |
| 12 | 2.880 | 3.350 |
| 11 | 2.750 | 3.150 |
| 10 | 2.620 | 2.960 |
| 9 | 2.470 | 2.750 |
| 8 | 2.330 | 2.540 |
| 7 | 2.180 | 2.330 |
| 6 | 1.800 | 2.110 |
| 5 | 1.730 | 1.880 |
| 4 | 1.600 | 1.650 |
| 3 | 1.340 | 1.420 |
| 2 | 1.050 | 1.220 |
| 1 | 800 | 900 |

To claim your FREE Sward stick fill out our simple form at: offers.roxan.co.uk/pel

www.kiwikit.co.uk ■ www.roxan.co.uk

KiwiKit ROXAN