



YTIR

llais ffermwyr Cymru

the voice of Welsh farming

£2.50



Amser cyhoeddi enillydd y gystadleuaeth!

tudalen 5



New and exclusive member-only webpages

details on page 9



Working together to make farming safer

page 22

Parliament must pursue amendments to agri bill to protect food security and safety



THE FUW says MPs and Lords must continue to work to introduce changes to the UK Agriculture Bill which protect the UK's food security and maintain standards for consumers, after a critical amendment was blocked by the UK Government.

During the third reading of the Agriculture Bill - the first of its kind to take place under Westminster's coronavirus 'hybrid' proceedings and electronic voting process - a clause which would prevent future trade deals from allowing food into the UK not produced to the standards required of farmers and processors in the UK was defeated by 328 to 277 votes, having failed to receive the support of the UK Government.

FUW President Glyn Roberts, (pictured left), said:

"The FUW has highlighted the need for such an amendment in oral and written evidence to UK Parliament and Welsh Assembly committees. We believe it was a grave error on the part of the Government to oppose the amendment given that it had the support of the Environment, Food and Rural Affairs committee and was supported passionately by MPs from across the political spectrum."

Mr Roberts said FUW members and the public were appalled that an attempt to protect UK farmers and consumers from food produced to lower health, welfare and environmental standards had effectively been blocked by the Government, at a time when the importance of protecting the food security and health of the Nation was at the top of the agenda

"With the Agriculture Bill now due to be considered by the House of Lords it is essential that they do all they can to correct this position before the Bill returns to the House of Commons, and I truly hope that the Government will support rather than obstruct this."

UK agricultural global tariff announcement a step in the right direction

THE FUW has described the UK Government's announcement of global tariff rates for key Welsh agricultural products which are broadly aligned with those of the European Union as a welcome step in the right direction - but has warned that these should not be watered down, whatever the outcome of current trade negotiations.

Speaking just hours after a meeting with Greg Hands, the UK Government's Minister for Trade Policy, FUW President Glyn Roberts said: "The importance of aligning agricultural tariffs for products such as beef, lamb and dairy produce is something the FUW made clear in a meeting with Minister Hands on Monday [May 18].

"Since February last year, we have written repeatedly to the UK Government regarding proposed draft tariff rates which would represent a major threat to UK farmers and consumers, the UK's food security and would be a massive own goal in terms of reducing our negotiating capital in trade talks."

In early March this year, the FUW responded to a consultation by the UK Government's Department for International Trade, stating that: 'Tariffs on agricultural produce protect UK farm businesses against unfair competition from products produced in conditions which would be illegal in the UK, including in terms of environmental, health and welfare standards, workers rights and working conditions.'

"This thereby protects the UK's high standards, farm businesses and those businesses which form part of agricultural supply chains, and those workers within those supply chains. This also protects and helps maintain domestic food production with the effect of increasing UK food security."

Mr Roberts said that while the FUW was still considering the full range of tariffs - of which there are almost twelve thousand - and their potential impacts, the decision to closely align tariffs for key Welsh agricultural products such as lamb, beef, cheese and butter with those in place in the EU was a welcome step compared with previously published draft rates which were a fraction of those applied by the EU.

"However, it is essential that we do not see these reduced or watered down, whatever the outcome of the current trade negotiations," said Mr Roberts.

"We need to maintain tariffs at rates which protect our farmers and food security and give us negotiating capital when discussing trade deals. Even in the event of a no-deal Brexit in the short term, we need to keep import tariffs at rates which match those of the EU and therefore provide an incentive for a beneficial deal between the UK and other countries - especially those that are on our doorstep within the EU," he added.

"We need to maintain tariffs at rates which protect our farmers and food security and give us negotiating capital when discussing trade deals."



Shearwell Data

Animal Identification & Management Systems



Supporting Welsh farmers with quality products

EID Tags EID Readers Software Handling

During these uncertain times it is always good to know there is someone available to help you, whether it is a product enquiry or you want to place an order, Lisa and the Shearwell team are here to help you!

Lisa is based in Carmarthenshire and has worked for Shearwell Data for four years as a sales and technical representative covering south and west Wales. Lisa works Monday to Wednesday for Shearwell Data.

Cysylltwch â Lisa ar 07837 988977 i drafod sut all Shearwell fod o help i'ch busnes neu ffoniwch y tîm ar 01643 841611 i roi archeb i fewn. Arhoswch yn ddiogel yn ystod yr amser heriol hwn.



North Wales dani.hughes@shearwell.co.uk 07494 499096

South Wales lisa.jones@shearwell.co.uk 07837 988977

AD CODE YTIR Call: 01643 841611 www.shearwell.co.uk

Rules and movement restrictions are fundamentally important

by Glyn Roberts, FUW President

AS farmers, we are well used to rules relating to infectious disease control, and while we may disagree with some of these - especially when they are only applied to livestock and ignore wildlife, as is the case with Bovine TB - we have a thorough understanding of the principles.

As the FUW recently told Parliamentary inquiries in Westminster and Cardiff, central to these is disease testing, contact tracing, zoning areas according to risk and restricting movements both locally and between zones.

Day in, day out, farmers across Wales have dealt with various different types of 'lockdown' for decades, whether as a result of BSE, scrapie, FMD, bluetongue virus or bovine TB.

Every livestock movement onto a farm triggers a six-day standstill based on the hypothetical risk that the moved animals could be infected with FMD, and every day the movements of millions of animals are tracked by EID Cymru, CTS and other systems for the same reason.

Every farm in Wales has a risk status associated with its TB history and that of the area it is located in, and at any point in time hundreds are under movement restrictions due to a positive TB test - mostly in the high and medium risk zones defined by the Welsh Government a number of years ago.

And as readers will know, the penalties for breaching agricultural 'lockdowns', moving animals without TB testing or failing to report movements with a few days are hefty and can run into thousands of pounds.

It is no surprise, therefore, that in recent weeks the FUW has received large numbers of calls from angry and concerned members regarding the arrival in their communities of visitors and second-home owners from other parts of the UK - moves and visits made with flagrant disregard for coronavirus rules aimed at protecting people's lives.

However frustrated we get with the nitty-gritty and sometimes illogical nature of livestock standstill and movement rules, we understand and respect their purpose, and for those who are tempted to deliberately breach the rules there is the threat of a hefty fine acting as a disincentive.

Yet for people moving from areas with high incidences of coronavirus to areas of Wales often with very low levels of the virus, the disincentive is no different to that aimed at stopping people parking a car on a double-yellow line: A £60 fine reduced to £30 if paid promptly.

While the fine structure has recently been revised by the Welsh Government such that it doubles for every repeat offence, this still seems ridiculously low compared with the hefty penalties a farmer would face for breaching livestock 'lockdown' rules - especially given that Welsh police forces maintain that in many circumstances they do not in any case have sufficient powers to enforce the rules.

The issue has been brought into further focus recently following the revelation that Number 10 advisor Dominic Cummings and his wife travelled more than 250 miles while both had suspected coronavirus infections.

While many may sympathise with the explanation Cummings has given in his defence, a farmer might well ask what the penalty would be if they knowingly transported an animal infected with bovine TB hundreds of miles, and whether a bleeding heart excuse would get them off the hook.

The principle of protecting animals and people through strict rules and movement restrictions is also of fundamental importance when it comes to the food entering the UK through our borders, and regular inspections and certification of farms and slaughterhouses in non-EU countries by the EU's Food and Veterinary Office have for many years protected us from a host of risks, including FMD.

So it is hardly surprising that the FUW and farming communities across the UK reacted with dismay when the House of Commons failed to agree an addition to the Agriculture Bill which would have ensured that food entering the UK after Brexit is produced to the same standards as those which are a legal requirement of farmers here.

The recent publication of food import tariffs that match those of the EU comes as a welcome U-turn that the FUW has lobbied hard for, and, if maintained, will in reality represent the biggest barrier and safeguard against the importation of substandard food from other parts of the world with which we do not have trade deals.

But trade deals are, by definition, agreements to allow these tariffs to be avoided by countries and trading blocs, and with trade negotiations with the USA already underway and talks with other countries due to start in the coming weeks and months, our negotiators must be sent a clear message that they cannot compromise on our high standards.

With many newly elected Conservative MPs not yet having found the confidence to rebel against their leaders in a vote, many believe that the UK Government deliberately rushed through the Third Reading of the Agriculture Bill to avoid a rebellion that would have resulted in a block on substandard food imports - thereby giving negotiators more freedom in talks with countries like the USA.

Whatever the truth, a significant number of Conservative MPs did rebel by supporting the change to the Bill, and it is essential that as it progresses through Parliament in the coming weeks we take every opportunity to make clear to politicians that we expect such a change to be reintroduced in order to protect our farmers, our consumers, our markets and our food security.

Mae'r erthygl yma yn Gymraeg ar ein gwefan - Newyddion - Newyddion Y Tir: "Mae rheolau a chyfyngiadau symud yn sylfaenol bwysig."

"Day in, day out, farmers across Wales have dealt with various different types of 'lockdown' for decades, whether as a result of BSE, scrapie, FMD, bluetongue virus or bovine TB."

Tribute to Oriel Jones



Oriel Jones (left) with son, Barrie and grandson, Shaun.

Photo taken from www.orieljones.co.uk - traditional welsh farming and butchery for four generations

ORIEL JONES passed away peacefully at home with his family on Wednesday May 6 2020.

Having been born in Llangeitho in 1930, Oriel spent his early childhood in London, returning to his uncle Jac's farm in Llanybydder when war broke out. It is there that his interest in butchery and farming began.

At the age of 21, Oriel began his own meat round and started livestock dealing. He then bought a small holding at the edge of the village, where he began slaughtering animals in the old barn, supplying local butcher shops. It then progressed to supplying Smithfield market, London with the finest Welsh produce.

In 1978 a new purpose built abattoir was completed and an export licence granted ten years later. By the late 80's the plant was processing in excess of 5,000 lambs per day. In 2001 Oriel Jones & Son Ltd was purchased by Dunbia.

However, Oriel remained at the forefront of Welsh agriculture and was proud to be part of such a prestigious industry, holding positions such as Chairman of the Federation of Fresh Meat Wholesalers, Chairman of Carmarthenshire District Council, Fellow of the Council for Awards of Royal Agricultural Societies. Oriel was also awarded with an MBE for his services to agriculture.

FUW President Glyn Roberts said: "I met Oriel on many occasions and I always enjoyed our conversations. Clearly, he was a very able businessman, building a large and successful abattoir in Llanybydder and he had an excellent understanding of the Welsh and British sheep sector.

"I am also aware of his wider contribution and support to his local community and to Welsh agriculture. I extend the condolences of the FUW to his family."

Credit: Welsh Country magazine

TB testing derogation for youngstock welcomed

THE decision by Welsh Government to exempt cattle under 180 days of age from routine or targeted surveillance bovine TB testing in unrestricted herds has been welcomed by the FUW as a pragmatic approach to the current pandemic.

Under the derogation, movement restrictions will not be placed on OTF herds if cattle under 180 days are left untested because the vet has judged that testing cannot be conducted in line with current COVID-19 social distancing guidelines.

FUW Senior Policy Officer Dr Hazel Wright, said: "The FUW is pleased that the Welsh Government has listened to our concerns about undertaking TB testing of youngstock during the pandemic. We continue to stress that many of our farmer members are in the COVID-19 high risk category due to their age and it is therefore important that the rules around TB testing do not risk the health of our key workers producing food during this pandemic. "It is extremely difficult to maintain social distancing rules when testing young calves for bovine TB and this derogation is therefore extremely welcome. It will come as a huge relief to those farmers facing the conflict of adhering to TB rules whilst also trying to adhere to social distancing rules and protect themselves and their family from illness."

The temporary exemption will be kept under regular review while the social distancing measures related to the COVID-19 outbreak are in force and applies retrospectively from March 23 2020 until further notice.

"Many within the livestock sector have been placed under immense financial and emotional pressure and derogations which prioritise farmer health and well-being must be welcomed," added Dr Wright.

If we have published anything that is factually inaccurate, please contact the editor on 01970 820820 at ytir@fuw.org.uk or at FUW, Llys Amaeth, Plas Gogerdan, Aberystwyth, Ceredigion, SY23 3BT and once verified we will correct it here as soon as possible.

South Wales Evening Post is part of Trinity Mirror North West & North Wales Ltd, a subsidiary company of Reach PLC, which is a member of IPSO, the Independent Press Standards Organisation. We adhere to the Editors' Code Of Practice as enforced by IPSO, who are contactable for advice at Independent Press Standards Organisation, Gate House, 1 Farringdon Street, London, EC4M 7LG. Website: <http://www.ipso.co.uk> Telephone: 0300 123 2220; email advice@ipso.co.uk

If you have a complaint concerning a potential breach of the Code of Practice, we will deal with your complaint directly or IPSO can refer your complaint to us. Please go to <https://www.reachplc.com/how-to-complain> where you can view our Complaints Policy and Procedure. A "How To Complain" pack is also available by writing to the Legal and Compliance Department, Reach PLC, One Canada Square, Canary Wharf, London, E14 5AP.

Sut i gysylltu gyda Y Tir / How to contact Y Tir

Golygydd/Editor: Nia Davies-Jones - ytir@fuw.org.uk

Golygydd y Gymraeg/Welsh Editor: Angharad Evans - angharad.evans@fuw.org.uk

Swyddog y Wasg UAC/FUW Press Officer: Anne Dunn - anne.dunn@fuw.org.uk

www.fuw.org.uk



Food supply concerns highlighted to select committee

THE FUW has highlighted the current impact of the coronavirus pandemic for Welsh food producers and the dangers of trade and rural support policies which undermine UK food security in evidence to the Environment, Food and Rural Affairs (EFRA) Select Committee.

Responding to the EFRA Select Committee inquiry on Covid-19 and food supply, the FUW said that UK food supply chains have been severely disrupted by the current pandemic and the measures put in place to prevent its transmission, causing a seismic shift in how UK and EU supply chains function and drastic falls in farmgate prices across agricultural sectors.

"The rapid closure of food service sector outlets as a result of lockdowns in the UK and on the continent have had particularly severe impacts on prices for milk, beef and lamb, with such impacts coming at a time when seasonal agricultural production is increasing as days lengthen and temperatures rise," said FUW Head of Policy Dr Nick Fenwick, (pictured above).

"Our response also makes it clear that the pandemic exposes the degree to which trade deals and domestic policies which undermine food production, active farmers and family farms would expose the UK population to food shortages and disruption in the event of a future pandemic or emergency," said Dr Fenwick.

The pandemic has hit countries across the world at a time when the UK Government was in the process of negotiating post-Brexit trade deals with the EU and other countries - deals which many fear will lead to more reliance on food imports from distant countries, thereby undermining UK food security, while also severing ties with our most important export markets and trading partners in the EU.



"The panic buying in early March gave us a taste of what food shortages really look like, and many products are still difficult to get hold of.

"In countries around the globe which rely more on food imports the impacts are far more acute, both in terms of shortages and steep increases in food prices, and the pandemic should be a stark warning to those who wish to undermine our family farms, food production and food security," he added.

The United Nations is warning of a massive spike in food insecurity in East Africa as a direct result of the pandemic, while the World Food Programme is warning that well over 40 million people are facing food shortages in West Africa.

Meanwhile, in Singapore - which only in February was cited by a UK Treasury advisor as an example of a country 'which is rich without having its own agricultural sector' - disruptions to food supplies have led the

authorities to accelerate local food production, including through plans to turn car park rooftops into farms.

"Our evidence to the Committee makes clear the folly of policies which increase exposure to the dangers of the current and future pandemics or other global emergencies," said Dr Fenwick.

"That includes policies which further decouple rural support from food production, active farmers and the family farm, as is currently proposed by both Defra and the Welsh Government.

"The UK and Welsh Governments need to urgently revise these plans in light of the clear evidence from the UK and around the world, as they would further expose the UK population to food shortages and disruption in the event of a future pandemic or emergency," he added.

Keep dogs on a lead reminder

RECENT reports of dog attacks on livestock during the Covid-19 pandemic have prompted the FUW to urge dog walkers to keep dogs on a lead when exercising in the countryside.

FUW Animal Health and Welfare Committee Chairman, Ian Lloyd, said: "We are reminding those taking respite in the countryside to also remember our farmers who are key workers producing our food at this very difficult time.

"Many family farms in Wales have been hit hard by the closure of restaurants, cafes and other service outlets during the current pandemic.

"Avoidable losses, such as those that happen when a dog chases or attacks livestock, are unnecessary, bad for both dog and livestock welfare and add to the current financial stress being experienced by farming businesses at this time."

The FUW has repeatedly called for legislative changes that will provide police forces with more powers to obtain evidence for prosecution, seize dogs, ban offenders from keeping dogs and have dangerous dogs destroyed.

"The countryside is a place to be enjoyed and most members of the public are able to use the countryside without incident. However, farmers must be able to protect their animals and safeguard their businesses," added Mr Lloyd.

Electricity Network Connection Appointments

WESTERN POWER DISTRIBUTION

Serving the Midlands, South West and Wales

FOR WPD CUSTOMERS AND INDEPENDENT CONNECTION PROVIDERS.

Western Power Distribution (WPD) is the electricity distribution network operator (DNO) for South Wales, South West England and the Midlands.

We operate the regional electricity network and provide new connections to homes, businesses and generation sites at voltages from 230 volts to 132,000 volts.

Ahead of applying to us for a new connection and particularly for Generation Connections, our customers and Independent Connection Providers (ICPs) often have questions and want to understand more about the process, timescales, technical matters, consents/legal requirements and possible constraints of making a connection to the network in a particular area.

If you are a landowner, an ICP, developer or community group and you need to discuss your requirements and the connection process, before making an actual application for a new connection to the network, please contact WPD on the relevant number below.

Midlands:

0800 121 4909

South West & Wales:

0800 028 6229

wpdconnectappoint@westernpower.co.uk

Please mention that your enquiry is for **connection appointments** when you call.

For details of our operational area please visit our website **www.westernpower.co.uk**



FUW Policy team update

by Gareth Parry, FUW Policy Communications Officer

THE Covid-19 pandemic continues and so does the hard work of the FUW. Announcements from the devolved Governments - Welsh, Scottish and Northern Irish - on and around the 8th May followed the common sense approach and extended the lockdown rules for another 3 weeks to ensure that what we had already achieved was not undermined by cabin fever.

After only two days, Boris Johnson's statement to the entire UK nation sparked a mist of confusion as there seemed to be no attempt to make clear that relaxing the lockdown restrictions by allowing people to "drive to other destinations" and "sunbathe in their local park" only applied in England. The FUW called for Boris Johnson to issue clarification that the changes made to English lockdown rules did not undermine Welsh policies and we have met with Rural Affairs Minister, Lesley Griffith, to discuss cross border movements and fine levels which will deter such movements.

In Wales, the Welsh Government introduced emergency legislation to be able to close some public spaces after thousands flocked to areas of Snowdonia National Park and police forces across Wales issued a total of 799 fines for alleged lockdown breaches from March 27 to May 11. This was exacerbated by the dry weather during the sunniest April on record and we have been discussing the potential impacts of sustained dry weather on farming practices during Welsh Government Agriculture Resilience Group meetings.

With increased footfall came reports of broken gates,

forest fires and dog attacks on livestock and the FUW has provided members with gate post signs asking walkers to consider their use of footpaths, obey covid gathering rules and use the countryside responsibly.

In Wales, the extended list of critical workers - which can be viewed on the Welsh Government website - includes essential agricultural services such as shearers, foot trimmers and sheep dippers, as well as those responsible for food production and the provision of veterinary medicines. Those included on the list can now apply for either a covid home test kit or a slot at a mass drive through testing centre via the Welsh Government website. For anyone who cannot access the internet, or has problems when applying for a test, the Covid-19 UK support service can be contacted by dialing 119 and this service is available bilingually.

The effect of covid-19 on short and long-term veterinary capacity in Wales is of concern and the FUW wrote to Welsh Economy Minister, Ken Skates, in support of the British Veterinary Association's call for action to ensure that veterinary capacity is protected.

The pandemic does not alter the importance of ensuring that veterinary staffing levels within practices are such that 24/7 emergency care for livestock is provided in order to safeguard animal health and welfare. We continue to promote the high standard of livestock welfare achieved in Wales and the closing of veterinary practices could have huge implications for both emergency and routine animal health procedures, TB testing and trade post Brexit.



Lamb and Beef Sectors

Recent Hybu Cig Cymru - Meat promotion Wales (HCC) figures for the week ending May 16 show that average new and old season combined lamb prices were up 19 pence per kg (244.2p/kg) live weight and cull ewe prices up £5.90 per head (£70.70) year on year. However, the total throughput of lambs from January through to April was down on 2019 figures by 9.2%, while AHDB reports for the week ending May 10 show that mince volumes were up 10% by the week due to average prices being around 30% lower than the price of lamb.

Despite the fact that we export lamb all year round, lamb throughput would normally increase by around 50% to 80% between the early spring and later summer with a large proportion of these lambs being sold into the foodservice sector or exported to the Continent. Given this, and recent figures from HM Revenue and Customs which already show a 15% year on year decline in sheepmeat volumes exported from the UK during the first quarter of 2020, our major concerns remain in terms of how covid-related disruption to the industry will become more significant during the latter half of the year.

The beef sector has been impacted as a result of losing the foodservice markets. At this point in April, the demand for hindquarter cuts such as steaks and joints were depressed; with reports that some processors had stores full of unwanted beef and were having to reduce carcass value by processing more mince. However, HCC reports that prime cattle market prices have been recovering as a result of industry support and supermarket promotions during the favourable weather.

In Wales and England, for the week ending May 16, prime cattle liveweight prices were up by 2.8 pence per kg (185.8p/kg) and average deadweight steer prices were down by 19.9 pence per kg (325.1p/kg) year on year.

HCC, along with the other devolved levy bodies, have launched their £1.2 million "Make it beef" campaign which aims to encourage consumers to purchase steaks and joints through TV, radio and social media promotions in order to address the issues of carcass balance.

The FUW is monitoring the situation closely and continues to discuss the impacts of this pandemic on the Welsh red meat sector with government officials and other stakeholders.

Dairy Sector

At the time of writing last month's Policy update for *Y Tir*, the FUW were lobbying for Welsh Government to introduce some form of direct financial support for our dairy farmers as the loss of foodservice demand, alongside increasing spring milk yields, was and continues to have severe impacts on dairy markets.

Defra announced plans to introduce a hardship fund enabling the hardest hit dairy farmers in England to access up to £10,000 to help them overcome the impacts of the pandemic and soon after, the FUW welcomed Welsh Government's decision to follow suit. Eligible dairy farmers - who have lost more than 25% of their income in April and subsequently May - will be entitled to up to £10,000 to cover 70% of their lost income. The FUW are in continued discussions with Welsh Government and industry Stakeholders to develop the scheme and it is

hoped that the scheme will be simple to administer and quick to deliver.

The FUW has also welcomed the new £1 million industry-led "Milk Your Moments" dairy campaign launched in May. Funded by AHDB, Dairy UK and the devolved Governments, it aims to increase milk sales by using social media, TV and radio promotions to encourage consumers to catch up with friends over a virtual coffee or dropping milk off for a family member.

Milk and dairy products feature in many situations that were taken for granted before the lockdown, even if it was making a cup of tea for the Farm Assurance inspector. Farmers are therefore also encouraged to get involved and can find more information and useful resources on the AHDB website (ahdb.org.uk/milk-your-moments). Having more farmers involved will help reconnect the industry with the consumer and elevate the positive impact of the campaign.

Brexit and trade

The FUW continues to express extreme frustration that a clause in the UK Agriculture Bill - which would prevent future trade deals from allowing food into the UK not produced to the standards required of our home producers and processors - was defeated by 328 to 277 votes.

The FUW has highlighted the need for such an amendment in oral and written evidence to UK Parliament and Welsh Assembly committees and believes it was a grave error on the part of the Government to oppose the amendment given that it had the support of the Environment, Food and Rural Affairs committee and was supported passionately by MPs from across the political spectrum.

With the Agriculture Bill now due to be considered by the House of Lords, the FUW is urging them to do all they can to correct this position before the Bill returns to the House of Commons.

Notwithstanding the above, the UK Government has since released reviewed global tariff rates for trading agricultural products between Most Favoured Nations

(MFN) which will come into force after the end of the Brexit transition period. The reviewed rates for key Welsh agricultural products, such as lamb and beef, are closely aligned with those applied within the European Union however, the FUW has warned that these should not be watered down whatever the outcome of current ongoing trade negotiations.

Since February last year, the Union has written repeatedly to the UK Government regarding proposed draft tariff rates which would represent a major threat to UK farmers and consumers, the UK's food security and would be a massive own goal in terms of reducing our negotiating capital in trade talks.

The FUW is still considering the full range of tariffs - of which there are almost twelve thousand - and their potential impacts. However, the decision to closely align tariffs for key Welsh agricultural products such as lamb, beef, cheese and butter with those in place in the EU was a welcome step compared with previously published draft rates which were a fraction of those applied by the EU.

Even in the event of a no-deal Brexit, import tariff rates should be aligned with those applied by the EU in the short-term in order to negotiate fair trade deals with Countries within the EU and beyond.

If you have an email address but are not currently receiving the FUW's member ebulletins and would like to, please contact gareth.parry@fuw.org.uk / 01970 629461

Amser cyhoeddi enillydd y gystadleuaeth

ROEDD y gystadleuaeth ffotograffiaeth plant yn llwyddiant mawr gan ddenu llawer o gynigion. Roedd y safon yn uchel iawn ac mi roedd yn dasg anodd iawn i'r beirniaid i ddewis yr enillydd.

Dyweddodd Llywydd UAC, Glyn Roberts: "Hoffwn ddiolch i bob plentyn a gymerodd ran yn y gystadleuaeth ac ni fyddai'r gystadleuaeth wedi bod yn gymaint o lwyddiant heb eu cyfraniad nhw."

Tynnwyd y ffotograff buddugol gan Endaf Owen, 14 oed o Langefni, Ynys Môn, gan ddefnyddio ei gamera drôn i ddangos ei dad yn llyfnu cae ac yn llunio'r geiriau 'DIOLCH NHS', llongyfarchiadau Endaf!

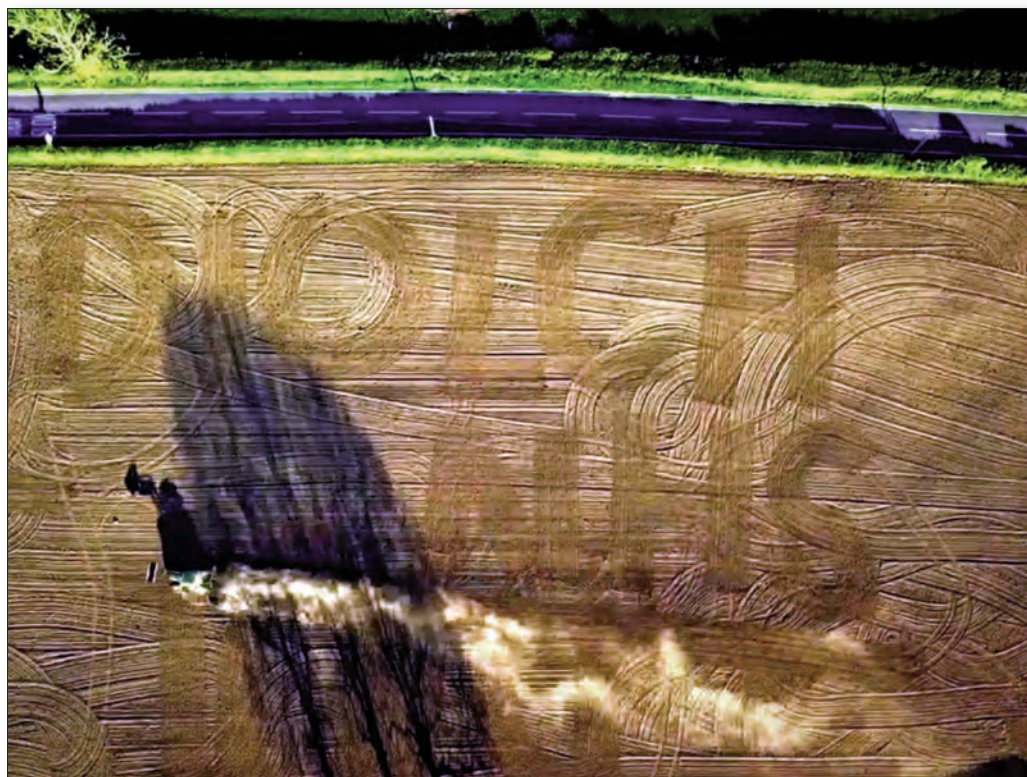
Isod mae'r ffotograff buddugol yn ogystal â rhai o'n ffefrynnau eraill.

The children's photography competition was a great success attracting lots of entries. The standard was very high and presented the judges with a tough task when it came to choosing the winner.

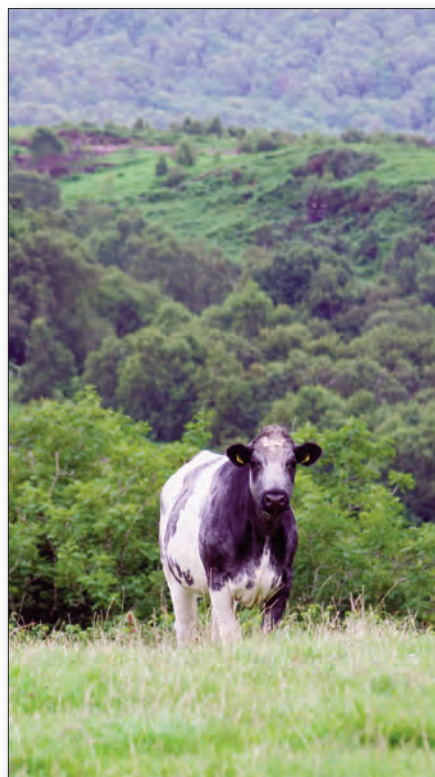
FUW President Glyn Roberts said: "I would like to thank every single child who entered the competition and to tell them that without their participation the contest would not have been such a success."

The winning photograph came in from 14-year-old Endaf Owen from Llangefni, Anglesey. His photo was taken using his drone camera showing his dad harrowing a field and drawing the words 'DIOLCH NHS', congratulations Endaf!

Below is the winning photograph as well as some of our other favourites.



Ffotograff buddugol/Winning photograph - Endaf Owen, oed/age 14.



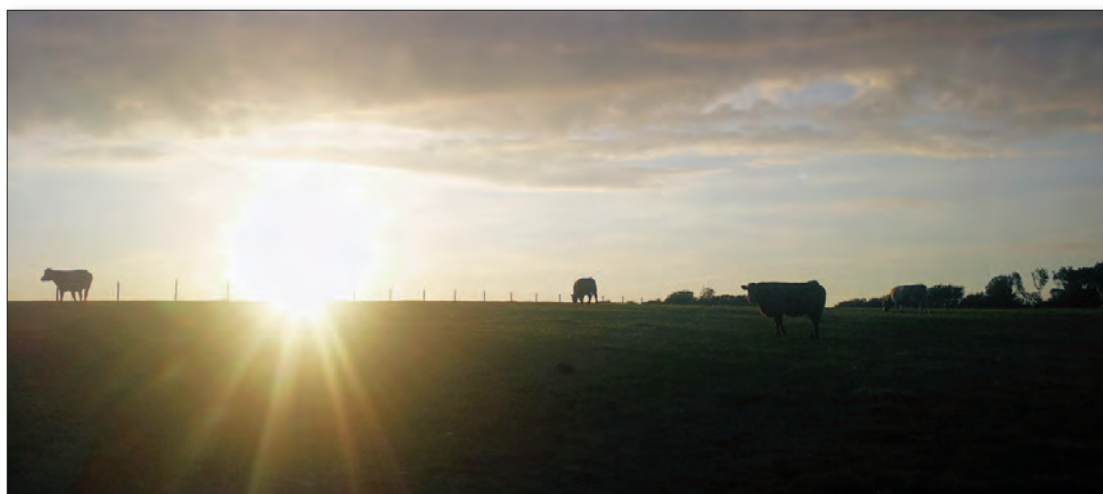
Morgan Lewis, oed/age 10.



William Llewellyn Edwards, oed/age 12.



Jessica Yardley, oed/age 14.



Tudur Jones, oed/age 8.

FUW Agency



Don't let the digital world leave you behind

Rural Payments Wales (RPW) communications are going digital - let us manage your online account and ensure that you don't miss important deadlines.

For just £195 + VAT a year, you will receive:

- **Full peace of mind** that your online account is being monitored by trained staff with advanced policy support
- **Notifications** of Welsh Government paperwork by phone, text and post
- **Crucial notices** of potential penalties or issues with claims that could cost thousands if left unmonitored

Let us check the paperwork so you can get on with your day job

We understand that farmers don't always have reliable access to the internet to be able to monitor their online accounts. We offer a **COMPLETE SERVICE** from local county offices to ensure you receive all messages and access all functions in your RPW online account

Free Sales Service for FUW Members

If you have anything to sell - big or small - fill in the coupon and for a FREE ADVERTISEMENT send it to:

Y Tir, Plas Gogerddan, Aberystwyth, SY23 3BT
or email it to: ytir@fuw.org.uk

Entries must be confined to 25 words and be received by:
June 22 2020

FOR SALE	WANTED	LIVESTOCK FOR SALE
HOLIDAYS	FARMS FOR SALE	MISCELLANEOUS
Name		
Address		
Telephone number		

PLEASE NOTE: FREE ADVERTISEMENTS ARE FOR FUW MEMBERS ONLY AND NOT FOR COMMERCIAL TRADERS

Membership number:

FOR SALE

FORD 4600 CAB & POWER STEERING; PZ 300 haybob, cattle crush, Hardi 300 litre crop sprayer, flat roller, parmiter chain harrow, 7ft topper. Tel: 01348 881212 / 07779 921934.

MIELE PREMIER DISHWASHER; very good condition - £20. Denbigh area. Tel: 07788 371641.

RAYBURN NOUVELLE; oil fired, serial no. R0024959 (heats 8 - 10 radiators) and cooker. Regularly

serviced 12 months. £100 buyer to collect, Denbigh area. Tel: 07788 371641.

NEW GREEN PLASTIC BODY FOR YAMAHA GRIZZLY 450 ATV; Tel: 07484 611631.

KALFOS; natural phosphate/soil conditioner. Typical application rate of 1 tonne/HA. Will provide up to 190kg phosphate, 50kg potash and 60kg of sulphate, also rich in calcium and key nutrients. Tel: 01691

777785 / 07802 680687.

LIVESTOCK FOR SALE

6 HEFFER STABILISER PUR; yn barod i darw / **6 PURE STABILISER BULLING HEIFERS;** ready to bull. Tel: 01559 384206.

WANTED

TRACTOR MOWER IN WORKING ORDER; for rush cutting in North Wales. Tel: 07968 185230.

Ni ddylai Coronafirws thanseilio iechyd da byw yn yr hir dymor

MAE Undeb Amaethwyr Cymru (FUW) wedi ysgrifennu at Weinidog Economi Cymru, Ken Skates, i gefnogi galwad Cymdeithas Filfeddygol Prydain i weithredu er mwyn sicrhau nad yw'r pandemig Covid-19 yn arwain at ostyngiad yn y gallu milfeddygol yn y dyfodol.

Dyweddodd Cadeirydd Pwyllgor Iechyd a Lles Anifeiliaid FUW, Mr Ian Lloyd, (*gweler ar y dde*): "Nid yw'r pandemig presennol yn newid pwysigrwydd sicrhau bod lefelau staffio mewn milfeddygfeydd yn golygu bod gofal brys 24/7 ar gyfer da byw yn cael ei ddarparu er mwyn diogelu iechyd a lles anifeiliaid. Efallai y bydd hyn yn golygu galw staff nôl o Furlough ac mae'n hanfodol bod y cynllun Furlough yn ddigon hyblyg i ymdopi â'r math hwn o drefniant."

Mae'r FUW hefyd wedi galw am gefnogaeth ar ffurf Rhyddhad Cyfradd Busnes i leihau'r risg o filfeddygfeydd yn mynd yn anghynnaladwy yn ariannol yn ystod y pandemig, a'r gostyngiadau posibl yn y gallu ar gyfer gwasanaethau hanfodol fel profion TB.

"Mae ffermwyr yng Nghymru yn gweithio ar y cyd â'u milfeddyg fferm i fagu da byw i safonau uchel o iechyd a lles anifeiliaid ac yn cymryd y cyfrifoldeb hwn o ddifrif. Rhan hanfodol o gynnal a gwella iechyd da byw yw milfeddyg y fferm ac felly mae'n bwysig nad yw canlyniadau ariannol y pandemig hwn yn cau milfeddygfeydd, yn lleihau'r gallu milfeddygol ac yn lleihau ein gallu i ofalu am dda byw yn y dyfodol.

"Mae goblygiadau enfawr i ffermwyr os bydd yn rhaid i milfeddygfeydd gau. Pan fydd effaith y pandemig hwn wedi lleihau, ac wrth i'r DU baratoi cytundebau masnach ar ôl Brexit yn y dyfodol, mae'n hanfodol sicrhau bod y swyddi hynny sy'n amddiffyn ein statws fel cynhyrchwyr bwyd diogel o ansawdd uchel yn cael eu gwarchod.

"Blaenoriaeth FUW bob amser fydd sicrhau dyfodol ffermydd yng Nghymru. O ystyried bod milfeddygfeydd yn rhan hanfodol o'r gadwyn gyflenwi, mae'r Undeb wedi ysgrifennu at yr ysgrifennydd busnes i gefnogi galwad Cymdeithas Filfeddygol Prydain am gamau adferol i sicrhau nad yw'r pandemig hwn yn arwain at ostyngiad yn y gallu milfeddygol yn y dyfodol," ychwanegodd Mr Lloyd.

This article is available in English on the FUW website: "Coronavirus must not undermine long-term livestock health, says FUW."

Member updates - we've got your back

THE FUW continues to work extremely hard on your behalf during these difficult times, raising the critical issues that our industry is facing and lobbying for continued support for our farmers.

To let you know exactly what is going on, our policy team put together a monthly bulletin for members, as well as a FUW Covid-19 Policy Update newsletter which you can subscribe to.

These updates are free for members and all we need is your email address if you want to receive them. It's as easy as that.

For those of you already subscribed to this extra service, please don't forget to check your email and Spam folder.

If you have any questions or need help with signing up - just give your local county office a call and they will have you set up in no time at all.



To advertise in the Sales Section of the Y Tir and reach a monthly audience of over 20,000 adults throughout Wales

Contact Rhian Jones on 01792 545654

or e-mail rhian.jones@mediawales.co.uk

CORNEL CLECS

Lle i'r enaid gael llonydd

gan Angharad Evans, Golygydd y Gymraeg

MIS gwahanol, ond yr un yw'r sefyllfa. Mae gafael Coronofirws yn parhau'n dynn ar y byd a ninnau'n cyfarwyddo'n araf bach gyda'r 'normal' newydd. Nid oeddwn eisiau'ch diflasu gyda sôn am y firws eto mis yma, gan mae hwnnw'n unig sy'n dominyddu'r byd ar hyn o bryd, ond sylweddolais nad oes dim byd arall yn digwydd, dim clecs i'w clywed.

Mae'n rhwydd iawn i bawb gwyno am y sefyllfa ryfedd yma, ond beth am edrych ar bethau o ongl arall am eiliad a chwilio am y positif. Roedd hi'n Wythnos Ymwybyddiaeth lechyd Meddwl yn ddiweddar, ac mae'n fwy pwysig a phwrpasol nag erioed i sicrhau bod pawb yn iawn a bod neb yn dioddef yn dawel.

Yn sgil y pandemig byd eang yma, rwyf wedi dysgu rhywbeth pwysig am fy hunan. Does dim angen rwtin fel y cyfryw.

Roeddwn mor gyfarwydd â thasgau dyddiol bywyd yn digwydd yn eu trefn naturiol. Codi, mynd i gwrdd â'r bws ysgol, mynd i'r gwaith, dod adre, swper a gwely. Ynghanol y prysurdeb roedd hi'n anodd iawn dod allan o'r rwtin yna. Ond wrth i'r ysgolion gau, lluniais ryw fath o amserlen, fel bod modd i ni ddilyn rhyw fath o strwythur adre. Ond buan iawn y sylweddolais nid oedd angen hyn, ac yn amhosib i'w gadw yn byw ar fferm! Nid oedd yr wyna'n mynd i gydymffurfio gyda'n hamserlen ni! Mae bywyd wedi arafu a natur wedi cael amser i anadlu, ninnau hefyd - wrth aros adre - lle i'r enaid gael llonydd!

Gyda'r posibilrwydd go iawn, na fydd ein hysgolion yn dychwelyd i 'normal' yn y dyfodol



agos, nid wyf yn poeni rhyw lawer bod Ladi Fach Tŷ Ni wedi colli misoedd o addysg. I'r gwrthwyneb i ddweud y gwir. Ers bod adref, mae hi wedi cael profiadau na fyddai wedi bod yn bosib wrth fynd i'r ysgol. Dysgu tyngu ŵyn - gwers bywyd. Sut i fesur dos a thocio defaid - gwers Mathemateg. Dysgu'r grefft o ffensio gyda'i thad - gwers Dylunio a Thechnoleg. Coginio pryduau bwyd a sicrhau bod fy mhen-blwydd lockdown i yn arbennig trwy goginio ac addurno cacen - gwers Arlwygo. Ac wrth gwers, digonedd o wersi ymarfer corff a chadw'n heini yn yr awyr iach!

Ond y wers bwysicaf yw treulio amser gwerthfawr fel teulu. Wrth iddi agosáu at yr arddgau, mi fydd hi, wrth reswm, eisiau treulio llai o amser gyda ni, a ni chawn yr amser hwn eto. Mae hi, a ninnau wedi cael amser eleni i weld y tymor yn newid, y dail yn ymddangos ar y coed, y gwcw'n canu, a'r blodau gwyllt yn llenwi'n cloddiau, efallai nad oedd amser cynt i sylwi ar y manylion bach lleiaf.

Nid oes neb yn gwybod faint mwy o'r sefyllfa ryfedd hyn sydd i ddod, na sut bydd bywyd yn edrych ar y pen draw. Ond rwy'n hyderus o un peth, mae Ladi Fach Tŷ Ni wedi elwa o'r holl brofiadau sydd wedi dod ger ei bron hi, a gobeithio yn sylfaen gadarn i'w sgiliau yn y dyfodol. Tan tro nesaf, cadwch yn ddiogel bawb!

This article is available in English on the FUW website - News - Y Tir News: "A place for the soul to rest."

Cysur ynghanol Coronafirws

gan Angharad Evans, Golygydd y Gymraeg

MAE'R wythnosau bellach wedi mynd yn fisoedd a Coronafirws yn parhau i ddominyddu bywyd pawb.

Mae'n anodd iawn dianc ohono gan fod pob rhaglen newyddion, papur newydd a hyd yn oed yr hysbysebion ar y teledu bellach yn sôn am ymbellhau cymdeithasol a'r firws.

Yn bersonol, rwyf yn hoff iawn o farddoniaeth, ac mae hyn yn profi'n ddihangfa i'w groesawu. Daeth darn o waith barddonol i'n sylw yn ddiweddar, *Marwnad y Ffermwr* sef cyfieithiad yn eiddo i Elin Angharad Davies, a dyma hi i esbonio mwy: "Ar ôl gweld y gerdd Saesneg 'Farmer's Lament' o waith Neil Andrew ar y cyfryngau cymdeithasol, cefais gais gan ffrind i'w chyfieithu. Roeddwn yn falch o gael gwneud hynny gan ei bod wedi taro tant gyda mi'n bersonol.

Mae'r darlun o'r hen ŵr yn y gerdd yn f'atgoffa o fy nhad; dyn y pridd oedd yn hapus i fyw bywyd syml ac yn adnabod bob anifail bron wrth ei enw. Mae'r neges yn hynod berthnasol y dyddiau hyn wrth gwrs. (Gyda'r ffermydd mawr yn prysur lyncu'r rhai bach a'r mewnlifiad yn troi ein tyddynnod yn gartrefi gwyliau a chaeau hamdden, beth ddaw o gymunedau cefn gwlad a'r economi leol? A beth am ddyfodol yr iaith a'r diwylliant Cymraeg?)"

Marwnad y ffermwr

Pam fod y sguor yn segur
A'r fferm deuluol yn wag?
A pham nad oes pwrpas bellach
I dyddynnod bach cefn gwlad?

Roedd o'n fodlon gyda'i ddyrnaid o ddefaid,
y moch, yr ieir a'r ci.
A welodd o'r rioed mo'r angen
I odro ugeiniau lu.

A'r ymborth i fwydo'r cyfan?
Fe'i plannodd â'i ddwylo ei hun.
Doedd dim angen tag ar anifail
Pan oedd enw go iawn ar bob un.

Yn y man, mae'n amser ymdeol
A'r cymalau yn llesg a hen.
Ond mae'r meibion yn ffoi i'r ddinas
I borfeydd brasach a chlên.

Ac felly mae yn nwylo'r asiant
Ac yn wledd i'w llygaid llon.
Anwybyddir yr holl lafur cariad
Am mai diwedd y gân yw hon...

Er mwyn godro pob un diferyn
Maent yn rhannu'r cyfan yn syth
Beth yw'r ots fod fferm fach deuluol
Ar fin cael ei cholli am byth?

A ddylai ef boeni ei enaid
Pan werthir y tŷ yn yr ocsiwn
Gan mai'r rhai sydd yn siŵr o elwa
Fydd yn byw yn fras ar ei bensiwn?

Er mwyn iddynt gadw ceffylau
Fe werthir y caeau yn glytiau
Does dim sôn am hela 'run cadno;
Mae'r cochyn a hwythau yn ffrindiau.

Mae'n gas ganddynt glochdar y ceiliog
Ac arogl tail wedi'i chwalu.
Tymor y saethu a'r cadw trefn?
Does dda gan y rhain mo hynny!

Fe lenwir y sguor hynafol
Â gwydr, dur a haearn
Fe gadwa nhw rai o'r hen drawstiau
I gael 'blas bach cefn gwlad' ar y cyfan.

Mewnlifa'r estroniaid yn araf
A cholli'r hen grefftwy'r y tir.
A gyfrwn ni'r geiniog a'r elw
Ar gownt y gwerthoedd go wir?

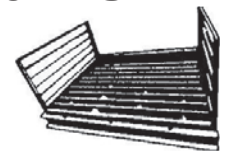
Wrth werthu'r fferm mae'n cysidro
I ble'r aeth ffrwyth llafur ei dad.
A sut gwnaiff y perchnogion ymdopi
Os daw rhyfel arall i'r wlad.

Pan fydd silffoedd y siopau yn weigion
Rhaid chwilio am fwyd yn ddi-ffael.
Bryd hynny bydd angen y ffermwy'r;
Ond fydd na 'run ffermwr i'w gael.

(Neil Andrew)
Cyf: Elin Angharad Davies

HOPKINS QUICK FIT
CATTLE GRID & BASEPat No.
2155526

- LOAD TESTED TO 50 TONS
- Installed within hrs/not days
- Minimal labour
- Maintenance free
- No concrete/blocks required - set in the ground on a hard core base



PLEASE SEND FOR BROCHURE
HOPKINS STEEL FABRICATIONS
Unit 2A, Lion Works, Pool Road, Newtown, Powys SY16 3AG
Tel: (01686) 627374 Fax: (01686) 627515
www.hopkinscattlegrids.co.uk

Farmplus

MANUFACTURER OF TIMBER BUILDINGS

Timber buildings
Natural products from renewable resources.
Caring for the environment.



3 BAY MONOPITCH

as shown

45ft x 17ft x 10ft 6in, eaves

£5,250 + VAT

delivered

Many other options available

FARMPLUS SHAY LANE, LONGRIDGE, PRESTON PR3 3BT
Tel: 01772 785252 www.farmplus.co.uk

SAF form disclaimer 2020



Fel rhan o becyn aelodaeth pob aelod o'r Undeb rydym yn gallu cynorthwyo gyda eich cais ffurflen taliad sengl - eich SAF. Er mwyn ein caniatáu i gyflwyno eich cais yn ystod cyfnod rheolau Covid-19 bydd angen i chi ddarllen a chytuno i'r ymwadiad isod. Bydd staff yr Undeb yn egluro i chi sut byddwn yn cofnodi eich cadarnhad.

As a part of your membership package of the Union we offer assistance with your single farm payment form - your SAF. In order to submit your claim during this extraordinary Covid-19 period we will need you to read and agree to the disclaimer below. Your local FFW staff will be in touch with details on how we record this confirmation.

Ffurflen Ymwadiad SAF 2020

Rydw/Rydym ni.....(Enwau)

O.....

.....(Cyfeiriad)

Drwy hyn yn cadarnhau ac yn datgan bod:

- Undeb Amaethwyr Cymru wedi esbonio i fi/ni na fydd yn derbyn unrhyw gyfrifoldeb o ran ei hun neu unrhyw aelodau o'i staff (drwy'r gyflogaeth) boed mewn cytundeb, camwedd (gan gynnwys esgeulustod) neu fel arall mewn cysylltiad â'r broses o gwblhau fy/ein ffurflen y cais sengl.
- Deallaf mai fy/ein cyfrifoldeb ni yw darparu gwybodaeth lawn a chywir yn ôl y gofyn er mwyn cwblhau'r ffurflenni sydd o dan sylw ac ni fydd UAC yn derbyn unrhyw gyfrifoldeb am wybodaeth anghywir a roddir.
- Deallaf bod UAC yn gallu cynorthwyo gyda cwblhau a cyflwyno y ffurflenni.
- Fy nghyfrifoldeb i/ni yw edrych dros y ffurflen sydd wedi ei chyflwyno a sicrhau bod hi'n gywir ar ol ei chyflwyno ar-lein i Lywodraeth Cymru.
- Unwaith mae'r ffurflen wedi ei chwblhau a chyflwyno rydw i/ni yn cadarnhau ein bod yn ymwybodol bod cyfnod o 30 diwrnod (yn cychwyn o ddyddiad y dyddiad cau i gyflwyno y ffurflen) lle gellir gwirio am unrhyw gamgymeriadau amlwg. Rydw i/ni yn cytuno i wirio y ffurflen sydd wedi ei chyflwyno o fewn yr amser perthnasol ac y byddaf i/ni yn hysbysu UAC am unrhyw gamgymeriadau yn y wybodaeth ar y ffurflen a gyflwynwyd neu os oes unrhyw wybodaeth sydd wedi ei hepgor o'r ffurflen a gyflwynwyd.
- Fy nyletswydd i/ni yw sicrhau fy mod/ein bod yn aros ac yn sicrhau fy mod/ein bod yn derbyn llythyr/e-bost sy'n cynnwys gwybodaeth am fanylion y caeau a chynlluniau sydd i'w hawlio oddi wrth Lywodraeth Cymru (o fewn 10 diwrnod o gyflwyno'r ffurflen) ac mae'n ddyletswydd arnaf/arnom i edrych dros y wybodaeth sydd ar y llythyr/e-bost yma er mwyn darganfod unrhyw gamgymeriadau a byddaf/byddwn yn hysbysu UAC yn syth.
- Fy nyletswydd/ein dyletswydd ni yw edrych dros y wybodaeth ar gopi o ffurflen y cais sengl a gyflwynwyd er mwyn darganfod unrhyw gamgymeriadau a byddaf/byddwn yn rhoi gwybod i UAC yn syth a ddim yn hwyrach na 15fed o Fehefin o'r fwyddyn berthnasol neu unrhyw ddyddiad arall a ellir ei benodi yn lle y dyddiad hwn gan y awdurdod perthnasol.
- Rydw i/ni yn cydnabod oherwydd lledaeniad o'r Coronafeirws a mesuriadau y Lywodraeth sydd mewn grym neu yn cael eu cynghori sy'n rhwystru fi/ni rhag cwrdd wyneb yn wyneb gyda UAC ac fy mod i/ni yn cytuno i holl gymorth a roddir dros ffôn neu ebost. Rydw i/ni yn cydnabod ac yn cytuno bod y penderfyniad i gynnig cymorth dros y ffôn neu ebost o fewn disgrisiwn llwyr UAC ac fy mod i/ni yn cytuno i barhau yn unol ac unrhyw ofynion a osodir gan UAC sydd wedi ei gymryd er mwyn amddiffyn iechyd cyhoeddus.
- Rydw i/ni yn caniatáu i UAC gwblhau a chyflwyno y ffurflen ar fy/ein rhan ac yn cadarnhau bod yr holl wybodaeth wedi ei gyflwyno i UAC yn llawn a chywir. Rydw i/ni yn cydnabod a chytuno na fydd gan UAC unrhyw atebolrwydd i fi/ni mewn achos lle rydw i/ni wedi darparu gwybodaeth anghywir neu gamarweiniol neu os ydw i/ni heb ddarparu unrhyw wybodaeth perthnasol i UAC.
- Rydw i/ni yn cytuno i indemnio UAC yn erbyn unrhyw golledion a ellir ei ddiodef gan UAC neu ei ennyn o ganlyniad i wybodeth anghywir neu gamarweiniol a ddarparir gen i/ni i UAC neu os ydw i/ni yn hepgor gwybodaeth i UAC.
- Rydw i/ni yn cydnabod boed bynnag y dull o gymorth a roddir i mi gan UAC bod yr ymwadiad yma yn weithredol ac na fydd gan UAC unrhyw atebolrwydd am unrhyw wybodaeth anghywir yn y ffurflen nac fod gen i/ni unrhyw hawl am ddiogolledu yn erbyn UAC am unrhyw wybodaeth anghywir, camgymeriadau neu unrhyw wybodaeth wedi ei hepgor ar y ffurflen a gyflwynwyd.
- O ddarllen y ffurflen yma, rydw i/rydym ni yn ymwybodol o'r ymwadiad uchod ac yn cadarnhau fy mod/ein bod yn ymwybodol o'n hawl i gael cyngor cyfreithiol annibynnol ac wrth barhau i gyfarwyddo UAC yn cadarnhau fy mod/ein bod yn derbyn yr ymwadiad uchod ac yn deall ei ganlyniadau.

Arwyddwyd gan

(Ar ran))

Dyddiad

SAF Form Disclaimer 2020

I/We.....(Names)

Of.....

.....(Address)

Hereby confirm and declare that:

- It has been explained to me/us that the Farmers' Union Of Wales (FUW) accepts no responsibility on the part of itself or any members of staff (through their employment), whether in contract, tort (including negligence) or otherwise in connection with the assistance provided in completing my/our SAF form.
- I understand that it is my/our responsibility to provide full and accurate information as requested for the completion of the said forms and that the FUW do not accept any responsibility for incorrect information given.
- I understand that the FUW is able to assist with the completion and submission of the forms.
- It is my/our responsibility to check the completed forms for accuracy after the form is submitted online to the Welsh Government.
- Once the form has been completed and submitted I/we confirm that I/we am/are aware that there is a 30 day period (running from the date of the relevant deadline) in which the form checked for any obvious errors. I/we agree that I/we will check the submitted form within the relevant period and that I/we will notify FUW if there is any incorrect information on the submitted form or if any information has been omitted from the submitted form.
- It is our/my duty to monitor and ensure that I/we receive a SAF acknowledgement letter/email including details of field and schemes claimed data from the WG (within 10 days of form submission) and that it is my/our duty to check the data on this letter/email in order to identify any errors of which I/we will then immediately notify the FUW.
- It is our/my duty to check the data on the copy of the submitted SAF in order to identify any errors of which I/we will then immediately notify the FUW no later than the 15th June of the relevant year or any other date that might be issued in place of this date by the relevant authority.
- I/we acknowledge that due to the outbreak of Coronavirus and the Government measures either in place or advised prevent me/us from meeting in person with FUW and that I/we agree to all assistance being provided by telephone or email. I/we acknowledge and agree that the decision to provide assistance by telephone or email shall be at FUW's sole discretion and I/we agree to proceed in line with any requirements imposed by FUW that are taken with a view to protecting public health.
- I/we consent to FUW completing and submitting the form on my/our behalf and confirm that all information provided to FUW will be full and correct. I/we acknowledge and agree that FUW shall have no liability to me/us in the event that I/we provide incorrect or misleading information or if I/we omit any relevant information to FUW.
- I/we agree to fully indemnify FUW against any losses that FUW might suffer or incur as a result of incorrect or misleading information provided by me/us to FUW or if I/we omit relevant information from being provided to FUW.
- I/we acknowledge that regardless of the method of assistance provided by FUW the disclaimers in this document apply and that FUW shall have no liability for incorrect information in forms nor that I/we have any recourse against FUW for any inaccurate information, errors or omissions on submitted forms.
- By reading this form I/we are now aware of the above disclaimer and confirm that I/we am aware of my/our right to obtain independent legal advice and that by continuing to instruct the FUW confirm that I/we accept the above disclaimer and understand its consequences.

Signed

(On behalf of))

Dated

Visit our new and exclusive FUW member-only webpages!

IN recent months we have been working hard on creating an area on our website that is just for you - our members. We wanted to be able to share our latest updates and information with you in an easily accessible format - just login from your smartphone, tablet or computer to view the latest farming news, business information and exclusive member-only discounts.

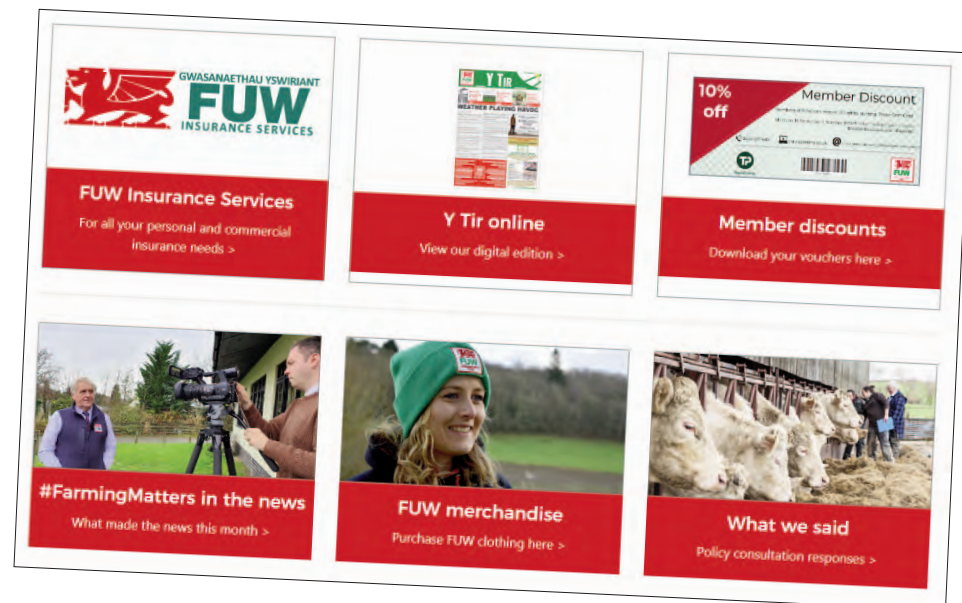
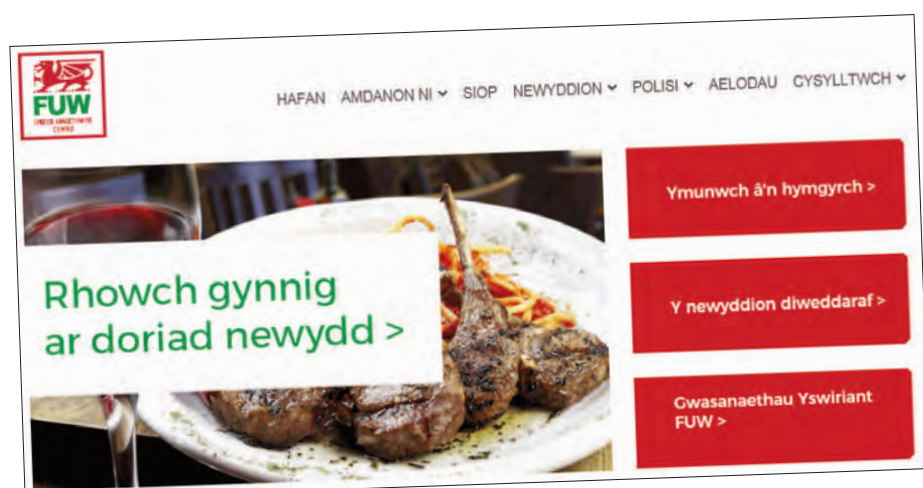
Why should I visit www.fuw.org.uk?

The new member-only section provides you with exclusive access to:

- Latest Wales-specific farming updates
- Member services and discounts
- Useful tips and information
- Available grants and application deadlines
- Our latest campaigns and important member updates
- Our responses to the latest consultations
- The digital version of Y Tir
- FUW Insurance Services contacts, free quotes and support

Plus much more!

The new member-only content is available in both Welsh and English. Over the next few months we will continue to add extra items to these pages, which we hope will prove informative and beneficial. If you have any suggestions on what should be featured in this exclusive section, please contact your local office or email us on post@fuw.org.uk



How do I log in?

Emails have been sent to all members whose email addresses we hold. If you're not sure what address we hold or if you want to update your email address, please contact your local county office. If you haven't received your email, please be sure to check your spam folders, and add us to your safe senders list. Otherwise, you can follow these steps to get started and access our members area:

- Go to: <https://www.fuw.org.uk/en/login>

- Enter the email address associated with your FUW account

- Click the "Forgot your password" button. This will take you through a process to choose a new password for your account (see tips on setting a secure password)

Once this process is complete you will be able to log in to the website. You can find the member-only content by clicking the "member" tab at the top of the page.

If you are having trouble logging in, please visit the link below and submit a support request: <https://www.fuw.org.uk/en/support-en>



Top tips on setting a secure online password:

Do use a combination of uppercase and lowercase letters, symbols and numbers

Don't use commonly used passwords such as 123456, the word "password," or any solitary words

Do make your password at least eight characters long

Don't use your name, a family member's name, birthdays or any other personal information

Don't use the same password across multiple websites

Do use abbreviated phrases for passwords. You can choose a phrase such as "I want to go to Aberystwyth." You can convert this phrase to an abbreviation by using the first letters of each word and changing the word "to" to a number "2." This will result in the following basic password phrase: iw2g2A. You can make it even more complex by adding punctuation, spaces or symbols: #iw2g2A!

Funding to support Welsh dairy farmers through COVID-19 welcomed

THE FUW has welcomed new funding measures to support Welsh dairy farmers through COVID-19, following an announcement by Rural Affairs Minister, Lesley Griffiths.

The dairy sector has felt the immediate impact of the global pandemic with the closure of the food service and hospitality sectors. To support the sector during these challenging times, the minister has confirmed eligible dairy farmers who have lost more than 25% of their income in April and subsequently May will be entitled to up to £10,000, to cover 70% of their lost income.

This it is hoped will help ensure they can continue to operate without impacting animal welfare and the environment.

Responding to the news, FUW Milk and Dairy Committee Chairman Dai Miles said: "We very much welcome this announcement. Large numbers of Welsh dairy farmers have been hit hard by the seismic changes to dairy supply chains that have occurred as a result of the current pandemic, with many facing devastating financial losses."

With farmers unable to access many of the Government's support schemes due to the eligibility criteria, Mr Miles said that the Welsh Government package is a welcome lifeline, even though losses on many farms would far exceed the support that has been announced - with some suffering losses that amount to many tens of thousands more than what is being offered.

"Even though the available funds don't fix the whole of the problem, and there will be many who continue to suffer, it is very much a step in the right direction to protect hard hit Welsh farms and the families, businesses and employees who rely on them."

The FUW previously called on the Welsh Government to introduce support for dairy farmers hit by severe farmgate price drops after Defra announced a fund enabling English dairy farmers to access up to £10,000 to help them overcome the impact of the coronavirus outbreak.

"We have had regular meetings with the Welsh and UK Governments as well as with other stakeholders since March, and called for a range of interventions including direct support. We will continue to do all we can to ensure that our industry continues to get the support it needs during these difficult times," added Mr Miles.



"Even though the available funds don't fix the whole of the problem, and there will be many who continue to suffer, it is very much a step in the right direction to protect hard hit Welsh farms and the families, businesses and employees who rely on them."

grow great
grass



Thistles.
No longer
a thorn in
your side.

Thistlex[®]

HERBICIDE

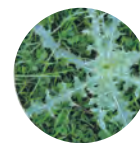
Thistlex[®] is an outstanding translocated herbicide.

Thistles compete with grass reducing your available grazing and can lead to greater incidence of Orf.

Thistlex[®] kills the roots so they don't grow back.

It is also effective on nettles and dandelions and very safe to your grass.

Get to the root of the problem. Ask for Thistlex[®] or find out more at corteva.co.uk



Creeping
Thistles



Spear
Thistles



Discover more at corteva.co.uk

Technical Hotline: 0800 689 8899 E-mail: ukhotline@corteva.com

USE PLANT PROTECTION PRODUCTS SAFELY. Always read the label and product information before use.

For further information including warning phrases and symbols refer to label.

Corteva Agriscience, CPC2 Capital Park, Fulbourn, Cambridge CB21 5XE. Tel: 01462 457272.

[®], [™] Trademarks of DuPont, Dow AgroSciences or Pioneer and their affiliated companies or their respective owners. Thistlex[®] contains clopyralid and triclopyr.





Cyber Liability Insurance

No business is safe from cyber crime. From self-employed traders to large corporations, cyber crime can strike anyone at any time

A cyber attack on a business can cause downtime, business interruption, financial loss, reputational damage, data breaches, system damage and more. This means that, without the right cover in place, you could be facing a hefty bill to repair the physical, reputational and financial damage to your business.

We provide cyber insurance that can help to mitigate these risks and cover the financial costs of repercussions following a cyber attack.

Optional Features

- Loss of data & system damage
- Data breaches
- Cyber extortion
- PR & crisis management
- Business interruption
- Full claims support
- GDPR investigation

Get in touch:
0344 800 3110
info@fuwinsurance.co.uk
www.fuwinsurance.co.uk

 GWASANAETHAU YSWIRIANT
FUW
INSURANCE SERVICES

IN the UK nearly one quarter of businesses are not familiar enough with Cyber coverage to purchase it and a further one quarter don't know Cyber insurance exists. In the UK only 11% of all businesses have Cyber insurance and one quarter of businesses consider themselves too small of a risk to require it.

Cyber insurance is more than just insurance cover that pays back a loss, it provides a service contract that gets businesses back on track following a cyber incident by helping to address customers concerns, manage reputation and continue trading with minimal disruption.

As prevalent now as it has ever been, hackers target businesses of all sizes for a multitude of agendas. If a hacker breaches a business' IT network, they may gain access to customer information, potentially exposing sensitive data. If a business falls victim to ransomware, they're pressured into paying off the hacker in order to regain control of their data.

Worse still, hackers may steal, delete or leak intellectual property, which could cause reputational damage and huge financial losses. Ultimately, a e hack could push a business into insolvency regardless of size or stature. If, say, your business deals with public money, assets or information, what could the consequences be?

What does Cyber Insurance actually do?

- It's cover against hackers stealing data and demanding a ransom not to release it
- It's cover against the fines and penalties that businesses will incur if they are assessed as non-compliant on data protection or privacy
- It's cover against viruses that paralyze systems - and cover for the income lost while they are being restored
- And cover against the accidental loss of data - followed by legal action by customers

Cyber security: Where to start?

As the cyber security systems become more adept at preventing and pursuing consumer fraud, the cyber criminals are constantly looking for ways to target business and in particular new revenue streams.

Farming businesses are no exception and farmers are especially at risk at this time of the year, as it is well known that the Single Farm Payment applications have been submitted - electronically. Sheep and Livestock records have been uploaded and more and more supplier accounts are paid by Bank Transfer. Cyber Criminals see this is an opportunity to commit fraud.

Amongst commercial organisations, numerous breaches have occurred, impacting banks, police forces and even defence firms.

The problems being faced by large organisations should be a warning call for farmers, owner managed businesses, social enterprises and charities, many of whom are at high risk of becoming unsuspecting cyber victims.

At the click of a button: What's the worst that could happen?

What would you do if your business was attacked?

- If you came into work and you were told you that someone had got into your systems and accessed your data, would you know what to do next?
- Or if someone hacked your business - to put out messages on social media for example - would you know how to stop them and repair the reputational damage?
- Or you came in and switched on your computer and there was no response except for a ransom demand? Who would you call? Would you pay?
- What would you say to your customers and employees?
- Who would you call for help and advice?
- What is your public relations plan?
- Do you know what regulations you have to comply with?
- How would you get back up and running again - fast!

What about Cyber Crime?

Financial cyber crime can be covered on most cyber policies. This provides cover to businesses whose bank accounts are targeted by criminals by hacking or phishing. Phishing, otherwise known as social engineering, is where businesses are duped into transferring money to criminals, as a result of fraudulent emails purporting to come from employees, directors, customers or suppliers.

For more information on our Cyber insurance cover contact your local Account Executive at your local FUW Insurance Services County Office or alternatively telephone 0344 800 3110.

(Ref: Travellers / Pen Underwriting)



Free Health Check

If you're an **FUW MEMBER**, we are offering a **FREE INSURANCE HEALTH CHECK**

HAVE YOU GOT THE RIGHT COVER?

 GWASANAETHAU YSWIRIANT
FUW
INSURANCE SERVICES

Sign up for your **FREE** health check and let our agricultural insurance experts look after you

All members are eligible for their **FREE** insurance health check, so **call 01970 820820** or your local office to speak to your local representative today

Sheep, pupils and rushes - how one

HE is a familiar face in Carmarthenshire and many know him either through school, from the mart or as the FUW's current Carmarthenshire Chairman.

Phil Jones, (*pictured right*), from Clyttie Cochion, Llanpumsaint, has been farming almost his entire life, embraced the ups and downs and inspires generations of young people to get a footing in the farming industry.

You might have heard the joke about the tourist who asked a local resident how to get from Kenmare to Killarney on the west coast of Ireland and the response was somewhat baffling; "I don't know as if I wanted to get to Killarney, I wouldn't start from there!" And that in a sense he said, would be a good introduction to his farm.

"As if you wanted to make money from farming, you wouldn't start in Clyttie Cochion, Llanpumsaint! At least, not since the new millennium dawned and the wet weather started in earnest. Our farm's soil type is clay over a heavy clay subsoil and it has not 'adapted' well to a significant increase in annual rain," he says.

Phil took the farm back in hand from his father around 2011 and started keeping the Easycare breed of sheep as he wanted a 'hands off' farming system and a way of managing the grassland without poaching the ground.

"We keep a motley flock numbering about 350, of mainly Easycare type ewes. My dad was more fortunate than I, in that he farmed the place with 50 dairy cows and that is what I had thought I would be doing when I returned from Agricultural College in the early 80's.

"But to my surprise, just as I finished my HND, he decided to sell the cows. And that was the beginning of my life's adventures," he recalls.

He was gifted 50 acres and a derelict farmhouse, which was renovated in 1990 and is the family's present dwelling and borrowed money against the recently acquired asset to begin his farming career.

Throughout his time on the home farm, he has experimented with growing crops and vegetables, returned to dairying in the early 90's, went through organic conversion in the early Noughties but had to sell the cows in 2003 because the ground couldn't cope with the strip grazing system.

"Our soils and climate dictate that we can only reliably grow grass and rushes; I could get a Welsh Cap for growing rushes! And being organic since 2000 hasn't helped either.

"Some of my neighbours have seen a significant increase in the growth of rushes; a weed that loves waterlogged soils but regular use of fertiliser and maybe a pass with a weed wiper wick saturated with Glyphosate now and again, has enabled them to fight back against encroachment of the green bristles. Although our ground is only 350 feet above the Towy estuary, it could fit in quite nicely amidst upland rough grazing," he says.

Not one to be disheartened by the challenging ground, Phil is clear that the strength of poor ground is that the vegetation growing from it, indigestible to humans, becomes nutritious and tasty protein "when cellulose is converted into energy by the mysterious chemistry that happens in the rumen".

"Poor Welsh ground can produce valuable protein. End of! Livestock farming has its very vocal



and erudite critics but this world needs protein and most people do not get squeamish with the thought of drinking milk and eating beef and lamb; especially when it has been produced to high welfare and environmental standards," he said.

Life took an unexpected turn for Phil when his wife Carol passed away some 14 years ago, leaving him with four young daughters and a farm to care for. As his life became far more busy all of a sudden, he rented out the farm and the tenants grazed the ground with cattle.

"When my wife passed away from 'you know what' (breast cancer which metastasised into the liver....) I had to park the farm and took on a job as a Helpline Officer at Organic Centre Wales. It wasn't easy but with children to feed, I had not much choice," he said.

Today he is a part time Lecturer in Gelli Aur. Monday is a part time farming and teaching day with Bro Myrddin School Yr. 11 pupils, who often come to the farm in the afternoon for an opportunity to get some hands-on farming done.

Tuesday is spent with Powys Schools Yr. 10 and Wednesday he is farming at home all day.

On Thursday Phil joins Powys Schools Yr. 11 pupils, either at Gwernyfed School or out on the farm for practical experience.

He finishes the week on Friday with a 50/50 day teaching Bro Myrddin Yr.10 pupils.

"I know a bit about farming and a lot about life and teaching 14 - 18 year olds requires knowledge of both. I cannot teach someone who doesn't want to learn, so I try to find out why and then try to remove the obstacle first.

"Teaching agriculture to young men and women from farming backgrounds is easy in that they want to add to their existing store of already considerable knowledge. The velcro backing is there and it is eager to get more stuff sticking to it," said Phil.

Although it is frustrating for him to leave the farm some days, spending time with the Yr. 10 pupils both in Powys and the Welsh Language medium school in Carmarthen is the highlight of his week.

"Sometimes, our lessons are more like a Farming Connect Discussion Group meeting and I'm amazed at the knowledge already embedded in them and their willingness to share with the rest of the class their farming experiences. I also find it a tonic to be responsible for teaching such eager pupils. Their enthusiasm and hunger for knowledge and experience is so uplifting," he said.

But it's not always serious, he also enjoys a laugh with his students and is amused by some comments or observations made.

Recalling a particular conversation, he said: "We were dehorning some 'vigorous' Welsh Black calves on a farm in Powys when one of the lads asked me; "Sir, who does most of the cooking in your house, you or your missus?"

"It might have made the questioner uncomfortable if I said that it was myself who did all of the cooking as my wife had passed away, so I worded my reply carefully, or so I thought and said; "Now don't feel uncomfortable about asking that question as you were not to know that

Atebion cwis / Quiz answers

Gobeithio bod chi wedi mwynhau'r cwis amaethyddol yn Y Tir mis diwethaf, nawr gadewch i ni weld sut y gwnaethoch chi! / We hope you enjoyed the agricultural quiz in last month's Y Tir, now lets see how you got on!



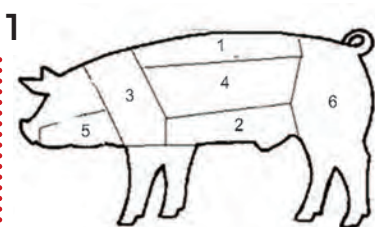
Defaid / Sheep

1 5 mis / months

2 Tsieina / China

3 Suffolk

Moch / Pigs



2 3 mis 3 wythnos 3 diwrnod / 3 months 3 weeks 3 days

Ieir / Chickens

1 Cloaca glân, pinc, llaith - iâr sy'n dodwy / Cloaca fach, sych, welw - ddim yn dodwy / Clean, pink, moist vent - laying hen / Small, dry, pale vent - not laying

2 260

3 21 diwrnod/days

Ceffylau / Horses

1 Traed - trawma corfforol dro ar ôl tro i'r traed yn ystod e.e. Marchogaeth hir a chaled, gyrru, neu neidio ar dir caled; gall hefyd gael ei achosi gan or-docio'r carnau. / Feet - repeated physical trauma to the feet during e.g. endurance riding, driving, or jumping on hard ground; it can also be caused by overenthusiastic hoof trimming.

2 Dwylo/Hands

3 11 mis/months

4 Shetlands

Lloi / Calves

1 Llaeth Torro / Colostrum

2 6/8 wythnos / weeks

3 Henffordd / Hereford

Carmarthen man is juggling the lot

my wife passed away many years ago now and just so you know, I haven't remarried and neither am I in a relationship at the moment."

"I was definitely not prepared for the response that I got from the girls in the group; "Oh Sir, we could set up a dating page for you if you like; we could say something like, Cowboy Phil seeks Cowgirl..... Can we please, please?" Class stuff eh? Who would have thought. Love it!"

Perhaps the most important lesson that he tries to teach the pupils is to avoid the 'if only's' in life and the best way for them to sidestep some future regrets, Phil says, is to get educated and earn some qualifications as they will then have greater options.

"The future of family farms is sometimes precarious and if the young man's business plan upon which he's basing the rest of his life is 'to be nice to my uncle', that vision could quickly become an 'if only!'

"If only I had got my GCSE Maths and English, then I could have gone to Agricultural College, or at least my CV would look better. I always tell them - remember, the future is fragile, do what you can NOW to reinforce it!"

Among the pupils he teaches, he sees future farmers. Young men and women who have already absorbed the stockmanship and farm husbandry skills of their forefathers.

"I believe they are versatile enough to adapt to the changing ethical, political and economic landscape that they will be working within. Go Wales go!"

And what of the future of livestock farming in Wales? - "History teaches us. I believe that Welsh farming has always been pastoral and therefore will probably continue to be. The various invaders of this island have never ventured far beyond the soil that can grow grain and that is why there is less evidence of Romans, Normans and Vikings in areas of high rainfall and poor soil, which describes about 80 per cent of Wales!

"Welsh farming has a future as it will continue to adapt and reinvent itself according to the needs of the times."

"Teaching agriculture to young men and women from farming backgrounds is easy in that they want to add to their existing store of already considerable knowledge. The velcro backing is there and it is eager to get more stuff sticking to it."



Part of the woodland that was planted because the ground got too wet.

Talk about mental health - have that conversation

ALONG with the body, the mind is the best bit of kit a farmer can have. But it is also the hardest to maintain. Commitments on the farm, lack of local healthcare support and the stigma surrounding mental health are the main reasons why many within the farming community struggle to look after their mind and body. But if they are not well-maintained the consequences can be disastrous.

Agriculture carries a high rate of poor mental health for various reasons. Isolation and the fact it is a male dominated sector are just a couple of reasons for poor mental health. Add to that the pressure that comes along with being a modern day farmer and we have a recipe for possible poor mental health. What we need to realise is that we are not alone.

These feelings you might be having aren't ones that only you feel. There are many people who feel the same way; the same loneliness, helplessness and uncertainty. It's also important to understand there is no shame in having poor mental health.

We all have mental health, various things happen throughout our life that impact our mental health and there is no shame or weakness in admitting you are suffering with poor mental health.

The single most effective thing you can do to help yourself is to talk. Talk about your struggles and about what you are feeling. Just by telling someone what you are going through is one of the biggest steps you can take - you will feel a weight lift off your shoulders.

Importantly if you are that person being talked to you need to listen. It is too easy to offer advice and positive thoughts and ways forward but ultimately that person has taken a huge step to talk to you and you need to just sit and listen.

Support is out there, if you feel that your mental health is suffering the first thing to do is talk to your GP. They will be able to advise you on the best steps forward. There are also excellent services available within Wales specifically for the agricultural community, Farming Community Network and Tir Dewi being two and of course The DPJ Foundation and The RABI.

There is also Mind Cymru and Call Helpline Wales who can all offer support. Most importantly we urge you to talk, whether you suffer with poor or good mental health. Talk about mental health, have that conversation, look out for the signs amongst friends and be that person to listen.

The more conversations we have about mental health the more comfortable people will feel talking about it and we can reduce the stigma that surrounds this awful illness that affects so many.



Samaritans: 116 123 or Welsh Language Line (Llinell Gymraeg): 0808 164 0123

DPJ Foundation: Call 0800 587 4262 or if talking on the phone isn't your thing you can now text if you would like support - Text 07860 048799

Mind Cymru: Call 0300 123 3393, email: info@mind.org.uk or text 86463

FCN: 03000 111 999

RABI: 0808 281 9490

Tir Dewi: 0800 121 4722

- 1 in 4 people will suffer with mental health problems in their lifetime
- 16.7% of the population have had suicidal thoughts
- In 2014 6,581 died by suicide in the UK - 1,850 died on UK roads
- Suicide is a leading cause of death in young men and women aged 20-34 in the UK
- Figures from the Office of National Statistics reveal that the number of young suicides each year is greater than it has been for the past 10 years
- In 2015 1,660 young people under 35 years took their own lives; 103 more than in 2014 and 58 more than the previous highest recorded figure (1,631 in 2011)
- 9 out of 10 people with mental health have suffered discrimination.

Cymorthfeydd Covid-19

Cymorthfedd Cyswllt Ffermio ar gael nawr gyda lluo o arbenigwyr sectorol i gefnogi y gymuned ffermio yn ystod Covid-19.

Bydd y cymorthfeydd yn para hyd at awr gyda arbenigwyr mewn meysydd sy'n ymwneud ag effaith Covid-19. Bydd y cymorthfeydd yma yn cael eu hariannu yn llawn trwy Cyswllt Ffermio.

MAE'R PYNCIAUYN CYNNWYS:

- Cyfreithiol
- Cyfrifydd
- Busnes
- Maeth y fuches laeth/biff a defaid
- Tir glas - Trafod rheoli porfa
- Tir glas - Trafod dadansoddi pridd
- Coetir
- Marchnata ac Arallgyfeirio
- Rheoli Staff
- Cynllunio
- Isadeiledd
- TGCh
- Ansawdd Ilaeth

Covid-19 Surgeries

Farming Connect surgeries available now with various sector specialists to support the farming and forestry community during Covid-19.

The one hour surgeries are fully funded through Farming Connect. We aim to arrange this within a few hours of your initial enquiry.

TOPICS INCLUDE:

- Legal
- Accountant
- Business
- Dairy/beef and sheep nutrition
- Grassland - Grass management
- Grassland - Soil analysis
- Woodland
- Marketing & Diversification
- Staff Management
- Planning
- Infrastructure
- ICT
- Milk quality

Merched
MEWN AMAETH

Ysbrydoli, ysgogi, galluogi...
Arwain Newid
... yn mynd ar-lein...
15 - 20 Mehefin

#AmaethHi
#FarmorHer

Women
IN AGRICULTURE

Inspiring, motivating, empowering...
Leading Change
... going online...
15 - 20 June

Ymgeisiwch am hyfforddiant Cyswllt Ffermio

Ffenestr ymgeisio ar gyfer hyfforddiant ar agor rhwng
04/05/20 - 26/06/20

Mae cymhorthdal o hyd at **80%** ar gael
Mae mwy na **80** o gyrsiau ar gael, dan
gategoriâu Busnes, Tir a Da Byw
Rhwydwaith o ddarparwyr hyfforddiant,
wedi'u lleoli ledled Cymru

Am gymorth i gwblhau eich Cynllun Datblygu
Personol, cysylltwch â'ch swyddog datblygu lleol yn gynnar
yn y cyfnod ymgeisio, neu mae canllaw cam wrth gam a fideo
ar gael i'ch cynorthwyo ar ein gwefan.

llyw.cymru/cyswlltffermiosgiliauhyfforddiant

Apply for Farming Connect Training

Training window open between
04/05/20 - 26/06/20

All training courses subsidised by up to **80%**
More than **80** courses available, categorised
under Business, Land and Livestock
Network of approved training providers,
located throughout Wales

For support to complete your Personal Development Plan,
please contact your local development plan early in the
application window, or alternatively, please visit the step
by step video on our website.

gov.wales/farmingconnectskillsandtraining



llyw.cymru/cyswlltffermio / gov.wales/farmingconnect

08456 000 813



FARMING
connect
cyswllt
FFERMIO
08456 000 813

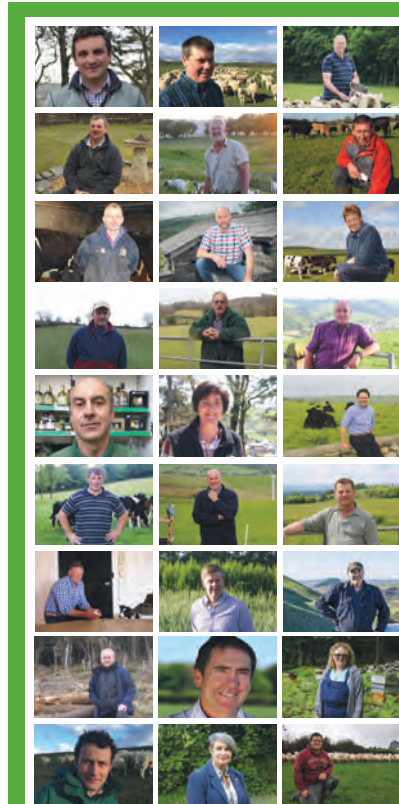
GWEMINARAU WYTHNOSOL / WEEKLY WEBINARS

Ymunwch â ni ac arbenigwyr y diwydiant mewn amrywiaeth eang o weminarau amserol / Join us and industry experts for a wide range of topical webinars.
Cysylltwch â / Contact Delyth Evans - delythevans@menterabusnes.co.uk

Pryd/When	Pwnc/Topic	Cynnwys/Content
09/06/20 20:00	Prif nodweddion y busnesau sydd yn y traean uchaf <i>Key characteristics of the top third businesses</i>	Beth yw'r gwahaniaeth rhwng y busnesau sydd yn y traean uchaf a busnesau eraill? (Pob Sector) <i>What is the difference between the top third performers and other businesses? (All Sectors)</i>
11/06/20 20:15	Iechyd Pridd <i>Soil health</i>	Rhan o ymgyrch digidol Priddoedd Iach, Elw Iach <i>Part of the Healthy Soils healthy profit digital campaign</i>

Am fwy o wybodaeth, ewch i'n gwefan - <https://businesswales.gov.wales/farmingconnect/cy/gweminarau-wythnosol>

For more information, visit our website - <https://businesswales.gov.wales/farmingconnect/weekly-webinars>



Beth am fanteisio ar ein **cynllun Mentora** yn ddigidol neu dros y ffôn? Mae'n cynnig 15 awr wedi'u hariannu'n llawn gydag un o'n mentoriaid ffermio/coedwigaeth.

Mae'r pynciau'n cynnwys – Arallgyfeirio, Rheoli Porfa, Ynni Adnewyddadwy a Chynllunio Busnes a mwy

Gellir gweld rhestr lawn o fentoriaid ar ein gwefan.

Why not access our **Mentoring scheme** digitally or over the phone? It offers 15 hours fully funded with one of our farmer/forestry mentors.

Topics include – Diversification, Grassland Management, Renewables and Business Planning to name a few

A full list of mentors can be found on our website



PODLEDIAD CLUST I'R DDAEAR

Mae pob rhifyn yn seiliedig ar gyfweiliadau gyda ffermwyr ac arbenigwyr o'r diwydiant.

Podlediadau diweddar ac i ddod yn fuan:

Rhifyn 16 - Dr Nerys Llewelyn Jones, Agri Advisor, yn trafod y cymorth sydd ar gael i fusensau amaethyddol yn ystod pandemig Covid-19.

Rhifyn 17 - Marc Jones, ADAS, yn cyflwyno sesiwn arbennig am gnydau porthiant

EAR TO THE GROUND PODCAST

All episodes are based on interviews with farmers and industry experts.

Latest and upcoming podcasts:

Episode 16 - Dr Nerys Llewelyn Jones, Agri Advisor, outlining the support available to farmers during the Covid-19 pandemic.

Episode 17 - Marc Jones, ADAS presenting a forage crops special

Gwrandewch ar / Listen on...



Gwefan Cyswllt Ffermio / Farming Connect Website



Apple Podcasts



Spotify

01248 750250

anglesey@fuw.org.uk

ANGLESEY

Sialens a hanner

Mae Gareth Pritchard (*gweler ar y dde*), o fferm Rhenblas, Llandrygarn wedi hen arfer gosod sialensiau i'w hun ac wedi llwyddo i gasglu dros £15,000 at nifer o achosion da dros y blynnyddoedd.

Wel, dyma'r her ddiweddaraf! Nod Mr Pritchard yw seiclo 5 milltir y dydd, dros 200 diwrnod yn olynol, beth bynnag fo'r tywydd! Yn y pen draw bydd yn cwblhau'r sialens o seiclo 1,000 o filltiroedd a drwy gyfrannu £5 y dydd yn casglu £1,000 i Gronfa NHS Awyr Las.

Mae croeso i unrhyw un sydd yn dymuno cyfrannu, wneud hynny drwy'r ddolen ganlynol www.justgiving.com/fundraising/garethrhenblas



Gareth Pritchard (pictured right), from Rhenblas Farm, Llandrygarn has always set himself challenges, and has managed to raise over £15,000 for numerous charities over the years. This is the latest challenge! Mr Pritchard aims to cycle 5 miles a day, over 200 days in a row, whatever the weather! Eventually he will complete the challenge of cycling 1,000 miles and by donating £5 a day raising £1,000 for the Awyr Las NHS Fund.

Anyone wishing to contribute, can do so via the following link www.justgiving.com/fundraising/garethrhenblas

01982 554030

breconandradnor@fuw.org.uk

BRECON & RADNOR

Letter to the Editor

Dear Editor

There has been a degree of misinformation on various social media sites recently surrounding the Agriculture Bill, which has led to various misleading reports in several publications. I want to put the record straight and to explain why I voted against the Parish Amendment to the Agriculture Bill.

The amendment's intention was to force countries to match our standards of food hygiene and animal welfare, before striking any trade deal. While this is a very good ambition which I completely support, there were a number of problems with the way it was worded.

Firstly, in calling for countries to meet each other's standards, it would have made a number of our existing trade deals invalid. It would have also made it extremely difficult to reach an agreement with the European Union which, as we all know, is the largest market (besides the UK) for Welsh lamb.

The EU is highly unlikely to sign up to a trade deal with us if it is forced to ensure that some of the non-compliant Member States raise their welfare standards first - it has certainly not been successful in policing other countries in the past. I am firmly convinced that anything that undermines a trade deal with the European Union would be a disaster for farmers and so I was not prepared to vote for it.

This amendment would not have succeeded in preventing substandard imports from coming into this country - in fact, it only would have succeeded in tightening tightened existing markets. The way to make sure that our standards are not threatened by cheap imports is to build specific

protection for our products into each and every trade deal we strike - most crucially with the United States. This is a point I made during the Trade Bill debate in Parliament.

Despite some reports in the media, the most important thing to bear in mind is that we have already protected our farmers from imports such as chlorinated chicken or hormone treated beef through the EU Withdrawal Bill. Transposing European regulation into British law means that it is illegal to import those products into the UK and at the end of the transition period our farmers will be protected from low quality imports coming into this country through the European Union Withdrawal Bill.

I was elected on a manifesto commitment to protect animal welfare, food hygiene and environmental protection. I am convinced that the Government is delivering on this commitment, but I will not hesitate to vote against them if required - protecting farmers in my constituency from substandard imports is one of my biggest priorities.

Farmers have been quietly working every day throughout the pandemic and I look forward to saying thank you to as many of you as I can in person when the lockdown restrictions are lifted.

I will continue to champion the cause for farming and I look forward to meeting many more of the farmers in Breconshire and Radnor in the months and years to come.

Fay Jones, Member of Parliament for Breconshire and Radnorshire

01286 672541

caernarfon@fuw.org.uk

CAERNARFON

Pwyllgor Gwaith



Pwyllgor gwaith Sir Gaernarfon yn cael ei gynnal trwy system Zoom, cyfarfod digidol llwyddiannus!

Caernarfon's Executive Committee taking place via Zoom, a successful digital meeting!

01267 237974

carmarthen@fuw.org.uk

CARMARTHEN

Covid-19 keepers of livestock

Government guidance states that if you have symptoms of Coronavirus you must remain at home for 7 days or 14 days as a household.

You should arrange for someone who is not self isolating to care for your animals.

However, if you are struggling to do this please get in touch with your Local Authority (Carmarthenshire County Council - 01267 234567) they will work closely with Animal and Plant Health Agency (APHA- 0300 303 8268) to provide guidance on how you as a keeper may be able to address any welfare concerns or issues.

Carmarthenshire County Council can also offer Community Support advising Carmarthenshire businesses and residents throughout the on-going Coronavirus crisis.

You can connect to this new service by calling



us on 01267 234567. This is available between 8.30am and 6pm seven days a week.

Council Officers will be on hand to provide guidance and signposting on areas including:

- Financial support and other help for businesses
- Assistance available for the elderly, vulnerable and isolated
- Linking the needs of communities with volunteers
- Rent Relief Scheme for small County businesses that employ up to 9 people.

01570 424515

ceredigion@fuw.org.uk

CEREDIGION

Llwyddiant i Fferm Gwarffynnon



David Davies (chwith) ac Aron Dafydd.

Mae David a Gwen Davies a'i mab Aron Dafydd o Fferm Gwarffynnon, Silian, Llanbedr Pont Steffan wedi derbyn gwobr Prif Fridiwr 'Master Breeder' gan Holstein UK ar gyfer ei buches, Ormond. Mae'r gymdeithas yn gwobrwyo aelodau sydd wedi cyrraedd safon rhagorol mewn cynhyrchiant llaeth ac wrth sgorio'r gwartheg.

Cafodd 19 buches eu gwobrwyo ar draws Prydain eleni a buches Ormond yn un o bedair o Gymru. Maent yn godro 138 o wartheg Holstein pur a Jerseys ac yn bridio'i stoc ifanc ei hun ar 180 acer ar gyrion Llanbed.

David and Gwen Davies and their son Aron Dafydd of Gwarffynnon Farm, Silian, Lampeter have been awarded a Holstein UK Master Breeder award for their herd, Ormond. The society awards members who have achieved an excellent standard in dairy production and cattle scoring. 19 herds were awarded across the UK this year and Ormond was one of four in Wales. They milk 138 pedigree Holstein and Jerseys cows and breed their own young stock on 180 acres on the outskirts of Lampeter.

01686 626889

montgomeryshire@fuw.org.uk

MONTGOMERYSHIRE

Letter to the Editor

Dear Editor

I believe that Welsh farmers have been aborted by our Conservative MPs who voted against an amendment to the Agriculture Bill which would have secured that any new trade deals had to uphold the same standards as Welsh and UK food producers.

Bearing in mind that farming is of fundamental importance to our Mid Wales communities, it's very sad that amendments to ensure that the high standards that Welsh and UK farmers were not protected, this will be a detriment to environmental, welfare and hygiene standards and whatever spin the Conservatives will put on it, of course we all know this was only in order to facilitate a trade deal with USA to allow chlorinated chicken and beef full of steroids to enter the UK that will undermine our farmers.

There were approximately 647,700 people working in the UK agricultural sector in 2015, 9% of which (58,300) are in Wales. Agriculture's share of total regional employment in Wales was 4.07%, greater than the national average of 1.42% indicating that agriculture makes a more significant contribution to Welsh employment.

Relative to the rest of the UK, 10% of UK agricultural land is located within Wales, 16% of farm holdings, and 9% of the UK's agricultural labour force and where 80% of the land area is designated as a less favourable (LFA) area, one would have thought that our Powys MP's would

have stood up and supported our farmers and the valuable contribution they make as a cornerstone of our communities rather than merely tow the party line.

If we have learnt anything from the current Coronavirus crisis, it is the need to look again at the sustainability of our food supply, of diversifying our food production, of the need to add value locally, of ensuring local processing, the developing of local supply chains, and maximising the potential within our communities and Wales rather than a dependency on international conglomerates.

Yet, what we have seen is a preference by our Conservative MP's to look after the interests of corporate America at the expense of our farming sector and rural communities. As night comes after day, this will result in low standard imports undermining all those that have invested and worked in developing their farming enterprises and it is a hypocrisy to say they are the party to look after the economy whilst undermining the largest economic sector in Powys.

As both farming Unions have stated this is a retrograde step with the FUW President stating, "We believe it was a grave error on the part of the Government to oppose the amendment, especially since it had the support of the Environment, Food and Rural Affairs Committee."

Elwyn Vaughan, Powys County Councillor for the Ward of Glantwymyn

Upcoming EOI window details

Scheme	Summary	Window closes
SAF Deadline Extension	The SAF deadline has now been extended to 15th June 2020 and all subsequent deadlines which follow will also be extended by a month, including for submitting supporting evidence. Please be aware that the BPS 'land at your disposal' date remains 15 May 2020.	June 15 2020
BPS Greening Requirements	The three crop rule crop diversification requirements for the 2020 BPS year will no longer apply . Seed receipts need not be submitted however Ecological Focus Area requirements remain in place. The system cannot be changed at this late date to stop warnings appearing on the SAF when the three crop rule is not met - a message will therefore appear and can be ignored.	
Glastir Small Grants: Landscape and Pollinators	Due to the covid pandemic, RPW have confirmed that the deadline for Glastir Small Grants: Landscape and Pollinators capital works has been extended to September 30 2020 so that work can be conducted in September after the hedge cutting closed period.	Sept 30 2020
Farming Connect Funding for Training Application Window	The next funding application for training opened on May 4 and will close on June 26 2020. Those registering for the first time in order to apply for a funded training course or update their account details should contact Farming Connect before 5pm on June 22 2020.	May 4 - June 26 2020



Cyfeiriwch ffrind
Refer a friend

Gofynnwch i ffrind, aelod o'ch teulu neu gymydog i ymuno a'r Undeb a byddwn yn anfon £40 i chi fel diolch!

Yn ein harolwg aelodaeth yn 2019 dywedodd 85% o aelodau eu bod nhw'n fodlon iawn â gwasanaethau'r Undeb, felly beth am awgrymu eraill i ymuno?

Po fwyaf o aelodau sydd gennym, y cryfaf yw ein llais.

Ask your friend, family or neighbour to join the Union and we'll send you £40 as a thank you!

In our 2019 membership survey 85% of members said they were very satisfied with the services of the Union so why not suggest others to join?

The more members we have, the stronger our voice is.

#AmaethAmByth

#FarmingMatters

Bach o gefndir y tîm yn swyddfa Llanrwst



Dafydd Peredur Jones Uwch Weithredwr Yswiriant

Pa mor hir gyda'r Undeb? 18 mlynedd

Swyddi/addysg flaenorol? Gweithio i gwmni prynu a gwerthu peiriannau fferm Arfon Roberts a cyn hynny peiriannydd ceir mewn modurdy

Bywyd cartref (priod/sengl ac ati)? Priod ers 26 mlynedd gyda Greta a dau o blant Sabrina a Dylan

Diddordebau/gweithgareddau eraill y tu allan i'r gwaith? Pysgota, aelod o Gôr Corwst, aelod o barti Hogia Sbyty, cadeirydd cyngor Cymuned, aelod o gwmni drama Padog, ysgrifennu ac actio sgetsh

Beth mae eich swydd yn ei olygu? Holl weithgareddau yswiriant a chymorth i aelodau gyda'u hymholiadau

Cais mwyaf anarferol? Mynd a dannedd gosod oedd wedi torri i'r deintydd ar ran aelod!

Beth ydych chi'n mwynhau fwyaf? Cysylltu gyda chwsmeriaid

Beth yw'r rhan bwysicaf o'ch swydd? Rhoi sicrwydd i'r cwsmeriaid a'i trin fel y buasai rhywun yn hoffi cael ei drin eu hun

Beth fydddech chi'n ei newid i wneud eich swydd yn well? Hoffwn gael mwy o amser i ymweld â chwsmeriaid yn lle bod ynghlwm i'r cyfrifiadur

Diwrnod 'typical'? Yn y swyddfa yn Llanrwst cyn 8 y bore, ymweld â chwsmeriaid adre tua 6.30yh

Unrhyw beth arall? Rwyf yn lwcus iawn o gydweithio fel rhan o dîm yn swyddfa Llanrwst ac yn falch o gymorth fy nghyd-weithwyr Gwyn, Sarah, Eleri, Heledd, Lora ac Angharad.

Gwyn Jones Uwch Weithredwr Yswiriant

Pa mor hir gyda'r Undeb? Gorffennaf 2011

Swyddi/addysg flaenorol? Gweithio mewn swyddfa bost ym Metws y Coed

Bywyd cartref (priod/sengl ac ati)? Yn briod gyda Mari ers bron iawn i 25 mlynedd. Tri o blant Guto, Mali a Wil

Diddordebau/gweithgareddau eraill y tu allan i'r gwaith? Dwi'n mwynhau cerdded, cyfarfod gyda ffrindiau a theulu a gwyllo chwaraeon

Beth mae eich swydd yn ei olygu? Gofalu a gweinyddu ar ran cwsmeriaid ac aelodau i ymwneud â Yswiriant

Beth ydych chi'n fwynhau fwyaf? Gweithio hefo fy nghydweithwyr a chael cwsmeriaid bodlon

Beth yw'r rhan bwysicaf o'ch swydd? Trin pawb run fath a bod yn gwrtais bob amser

Beth fydddech chi'n ei newid i wneud eich swydd yn well? O bosib cael mwy o amser i fynd allan i weld cwsmeriaid.



Sarah Collins Gweithredwr Yswiriant

Pa mor hir gyda'r Undeb? Hydref 2015

Swyddi/addysg flaenorol? Prifysgol Bangor yn astudio marchnata

Bywyd cartref (priod/sengl ac ati)? Yn byw gyda fy mhartner Rob, roeddwn ni i fod i briodi haf yma ond wedi gorfod gohirio tan 2021 oherwydd coronafeirws!

Diddordebau/gweithgareddau eraill y tu allan i'r gwaith? Dwi'n mwynhau cyfarfod gyda ffrindiau, cerdded hefo'n spaniel Pepper, a chwarae badminton

Beth mae eich swydd yn ei olygu? Gofalu am anghenion yswiriant fy nghwsmeriaid a delio hefo unrhyw ymholiadau gan gwsmeriaid neu aelodau

Beth ydych chi'n fwynhau fwyaf? Cael panad a sgwrs hefo fy nghydweithwyr a chwsmeriaid

Beth yw'r rhan bwysicaf o'ch swydd? Edrych ar ôl ein cwsmeriaid ac aelodau

Beth fydddech chi'n ei newid i wneud eich swydd yn well? Llai o waith papur a mwy o amser!

Heledd Llwyd Hamer Cydlynnydd Cyfrif

Pa mor hir gyda'r Undeb? Wedi bod hefo UAC ers Mai 2018

Swyddi/addysg flaenorol? Mi fues i'n ddisgybl yn Ysgol Llangwm i ddechrau ac yna symud i fyny i Ysgol y Berwyn, Y Bala. Yna mi es i'r Brifysgol ym Mangor am dair blynedd i Astudio Astudiaethau plentynod a

Chymdeithaseg. Ar ôl hynny, penderfynais ddilyn cwrs Diploma Iefel 4 Cwmsela yng Ngholeg Llandrillo yn Rhos am 3 blynedd rhan amser, tra'n gweithio mewn Meithrinfa ac wedyn yn ffodus i weithio i GIG. Cefais y cyfle i weithio am 5 mlynedd fel rhan o dîm o Gynghorwyr Cymorth i holl staff Betsi Cadwaladr. Roeddwn yn cynnig cyngor dros y ffôn ar gyfer gwahanol bethau megis

iselder, salwch a chael ambell gwestiwn yn ymwneud â pholisïau'r gwasanaeth lechyd. Gwirfoddolais fel Cwmselydd i RASA yng Nghaernarfon ac i dîm lechyd Meddwl ieuencid ardal Cei Connah yn ystod y cyfnod yma hefyd

Bywyd cartref (priod/sengl ac ati)? Rwyf wedi priodi ers blwyddyn bellach gyda Ben, ond gyda'n gilydd ers dros 14 o flynyddoedd. Mae gennym ddau o fechgyn, Nico John sydd yn 6 a Mabon Henri sydd yn 3

Diddordebau/gweithgareddau eraill y tu allan i'r gwaith? Rwyf wrth fy modd yn mynd allan i gymdeithasu gyda theulu a ffrindiau. Rydym yn deulu hynod o agos, ac ers rhai blynedd bellach, rydw i, fy Mam (Gwennan Williams Cangen Dinbych a Fflint) a fy chwariydd Linor ac Ild yn mwynhau mynd i aros mewn gwesty moethus am un penwythnos y flwyddyn i ymlacio! Rwyf yn mwynhau mynd am dro gyda'r gŵr a'r hogiau ar hyd llwybrau hyfryd Dyffryn Conwy. Rwyf yn gwirfoddoli fel Rheolwr i dîm Rygbi plant o dan 7 mlwydd oed Nant Conwy ac yn rhan o gôr cymysg CoRwst yn Llanrwst

Beth yw'r rhan bwysicaf o'ch swydd? Gwneud yn siŵr fod y cwsmeriaid yn cael y gwasanaeth gorau posib a'u bod yn gadael y swyddfa yn hapus

Beth fydddech chi'n ei newid i wneud eich swydd yn well? Cerddoriaeth cefndir yn y swyddfa!

Diwrnod 'typical'? Dechrau gyda phaned bob bore! Wedyn ymlaen i wneud y 'Renewals' i Dafydd. Gan ein bod ar y funud yn y cyfnod rhyfedd 'Lockdown' 'ma, rwy'n 'jyglu' bod yn fam a gweithio o adre'r un pryd, ond mae criw Llanrwst yn gymorth mawr ac maent yn deall fod y plant angen sylw o bryd i'w gilydd! Rwy'n ateb galwadau ffôn, ffonio cwmnïau yswiriant i gael y dogfennau yn barod ar gyfer eu gyrru, ffonio cwsmeriaid i dderbyn cyfeiriadau e-byst, ateb e-byst gan gwsmeriaid, cydweithwyr a chwmnïoedd yswiriant. Rydym bob amser yn cael hwyl yn swyddfa Llanrwst, does yr un diwrnod yr un peth ond rydym i gyd yn hapus ac yn gefn i'n gilydd!



Eleri Jones Cydlynnydd Cyfrif

Pa mor hir gyda'r Undeb? 15 mlynedd - Ebrill 2005

Swyddi/addysg flaenorol? Gweithio ym Manc HSBC am chwarter canrif!

Bywyd cartref (priod/sengl ac ati)? Cymar Emyr Owen yn cael ei adnabod hefyd fel Dei Em!

Diddordebau/gweithgareddau eraill y tu allan i'r gwaith? Diwylliant Cymreig a chymryd rhan yn y gymdeithas leol a'i gweithgareddau gyda Merched y Wawr a bod yn drysorydd papur bro Yr Odyn. Garddio, mynd allan i fwyta - hynny ydi cyn y COVID-19, cerdded a bod yng nghwmni teulu/ffrindiau

Beth mae eich swydd yn ei olygu? Delio gydag ystod eang o ymholiadau ynglŷn ag yswiriant gyda'n cwsmeriaid a phrosesu ceisiadau a dogfennau ar y cyfrifiadur

Cais mwyaf anarferol? Cynorthwyo Dafydd Peredur i ddal llygoden fawr fyw yn yr hen swyddfa!

Beth yw'r rhan bwysicaf o'ch swydd? Rhoi gwasanaeth o'r radd flaenaf i'r cwsmeriaid a bod yn gywir yn y gwaith

Beth fydddech chi'n ei newid i wneud eich swydd yn well? Mwy o oriau mewn diwrnod!



Lora Roberts Cydlynnydd Cyfrif

Pa mor hir gyda'r Undeb? Bron i flwyddyn

Swyddi/addysg flaenorol? Gweithio mewn oriel ym Metws-y-coed

Diddordebau/gweithgareddau eraill y tu allan i'r gwaith?

Treulio amser gyda fy merch Alaw Medi yn mynd am dro neu fynd i weld teulu. Dwi hefyd yn mwynhau mynd ar fy 'paddle board' ar lynnoedd lleol, pan fydda i'n cael amser i fy hun

Beth mae eich swydd yn ei olygu? Darparu cymorth gweinyddol i'r gweithredwyr yswiriant yn y swyddfa

Beth ydych chi'n mwynhau fwyaf? Gweithio fel rhan o dîm a helpu cwsmeriaid

Beth yw'r rhan bwysicaf o'ch swydd? Sicrhau bod y gwaith a wnaif i safon uchel a bod pob cwsmer yn hapus.

Angharad Mair Williams Cydlynnydd Cyfrif

Pa mor hir gyda'r Undeb? Ers Awst 2019

Swyddi/addysg flaenorol? Astudio gradd mewn Troseddeg am 3 mlynedd ym Mhrifysgol Aberystwyth

Bywyd cartref (priod/sengl ac ati)? Byw adra efo mam, dad, a fy mrawd bach yn Llanrwst

Diddordebau/gweithgareddau eraill y tu allan i'r gwaith? Wrth fy modd yn mynd i wyllo rygbi, enwedig tîm lleol Clwb Rygbi Nant Conwy. Mynd am dro o gwmpas yr ardal pan mae'n braf

Beth mae eich swydd yn ei olygu? Gofalu am ein cwsmeriaid ac aelodau sydd yn ymwneud efo yswiriant ac weithiau ar ochr yr Undeb

Beth ydych chi'n fwynhau fwyaf? Cael gweithio efo staff sydd yn hwyl ac sydd bob tro yn cefnogi ein gilydd, enwedig yn y cyfnod digon od yma. Fy mod i yn dysgu rhywbeth newydd bob dydd yn fy ngwaith

Beth yw'r rhan bwysicaf o'ch swydd? Sicrhau fod ein cwsmeriaid yn derbyn y 'customer service' gorau bosib, ac i helpu allan os ydyn nhw efo unrhyw drafferthion efo'i yswiriant yn ogystal â gwneud yn siŵr fod y 'renewals' yn cael ei gyrru allan ar amser

Diwrnod 'typical'? Dechrau gan wneud panad o de, wedyn mynd ati i wneud 'renewals' ar gyfer Gwyn Jones, ac ateb y ffôn a delio gydag unrhyw ofynion gan y cwsmeriaid. Gorffen y dydd gyda bancio a mynd a llythyrau i'r swyddfa Bost (pan rydym ni yn gweithio yn y swyddfa).



If you require a translation of these profiles please email our Translator: angharad.evans@fuw.org.uk

Steak and Perl Las Sandwich

FOOD plays a big part in our life. Both my husband Adam and I love cooking and trying new things, especially if they involve locally and Welsh sourced produce. We are lucky to have such exceptional food right on our doorstep and when it comes to red meat and dairy produce, Wales, in our minds, leads the way. Who would dare argue with that?

With a bit of spare time on our hands there has been an increase in kitchen activity - from baking bread, to a first attempt at brewing beer, slow cooking all sorts of beef and lamb, BBQ's as soon as there is a bit of sunshine around. Dinner in our house is rarely a boring affair.

Lunch on the other hand needed some attention. So we put our thinking caps on and it didn't take long for inspiration to hit. What do we love to eat? What makes our soul sing with contentment? Beef steak, bread and cheese, of course. A fine combination as far as comfort food is concerned. Say hello to the Dunn Steak and Perl Las sandwich.

All credit for this creation must go to my husband - who is by far the more talented out of the two of us when it comes to cooking up a storm. From our house to yours - we hope you enjoy!

Anne & Adam Dunn

Ingredients (2 sandwiches)

2 PGI Welsh Sirloin steaks (share one between you or go all out and have one each)

4 Lettuce leaves or a handful of Rocket

Half a Red Onion - sliced

Handful of Chestnut Mushrooms - sliced

1 tbsp Welsh Butter

1 tbsp Mayonnaise

1 tbsp French or Wholegrain mustard

4 Pickled Gherkin slices

1 Tomato - sliced

4 slices Perl Las cheese

4 slices of bread or a baguette of your choice

Pinch of Salt & Pepper

Olive Oil

Welsh Cheese Coleslaw - optional side

Tools

Griddle Pan

Tongs

Chopping board

Small saucepan

Bread knife

Method

1. Take your steak out of the fridge and let it come up to room temperature, then season with salt and pepper

2. Chop the mushrooms, onion and tomatoes into slices

3. Mix the mustard with the mayonnaise

4. Get your griddle pan hot - and toast the bread if you're using sliced (we used a home baked sunflower seed loaf) - wait for a nice bit of charring. You want to be able to see those griddle pan lines. When that's looking good, take them out and set to one side

5. Melt a bit of butter in a small saucepan and add the mushroom. Saute and season with some salt and pepper. Add a bit of garlic if the fancy takes you

6. Now the steak. Make sure your pan is really hot before you start frying. How long you leave it in there depends entirely on how you like your steak cooked. The choice is yours. But for the sake of all steak lovers - please don't cremate it

7. When the steak is cooked, give it time to rest before you start slicing. Now is a good time to start stacking up the sandwich

8. Bread, mustard mayonnaise, lettuce, steak slices, mushrooms, pickled gherkin slices, tomato and onion slices, topped off with a few slices of Perl Las

9. Time to get stuck in and enjoy!



Dalgona coffee

ALWAYS looking for different ways in how we can support our dairy farmers and enjoy the white gold in a new and exciting way, we have been scouring the internet for ideas and came across a gem!

Please meet the Korean coffee drink that has taken the internet by storm, dalgona coffee. It is essentially like a cappuccino but upside down. The frothy coffee sits on top and the milk underneath.

The good thing is, it only requires three ingredients and you can have it hot or cold. What's not to love?

Ingredients

2 tbsp instant coffee or espresso powder (flavoured instant coffee, like nutty hazelnut is an extra special treat) *If you don't like your coffee very strong, use a little less coffee

2 tbsp sugar

2 tbsp very hot water

400ml/14fl oz Welsh milk

Method

1. Add the instant coffee, sugar and hot water to a medium mixing bowl or a plastic measuring jug. Using an electric hand-held mixer, whip the coffee mixture until it is light brown, fluffy and holds stiff peaks when the whisk is removed. It should almost feel like a marshmallow cream and be a bit shiny. That's the top part done.

2. If you're having this as a hot drink, now is the time to heat the milk. If you're having it as an iced coffee - get your ice cubes ready.

3. Now all you have to do is divide the milk between two heatproof glasses and spoon dollops of the frothed coffee mixture on top and smooth out with a spoon. If you want to be fancy - you can pipe it on. A sprinkle of cocoa powder on top is a nice little finishing touch.

4. Take a photo and share it with us. Only if you want to of course.



Can sheep help fight Alzheimer's disease?

by Emma Davies, Farming Connect Knowledge Exchange Hub, IBERS Aberystwyth University

ALZHEIMER'S disease (AD) is a chronic neurodegenerative disease that affects millions of people worldwide. While the disease mainly progresses due to increasing age, some causes can be genetic, causing disease in young people.

The symptoms of AD begin with general memory loss, but can become devastating, with patients having significant problems with short and long-term memory. This can extend to being unable to recognise objects, places or even family members, and difficulty performing tasks such as talking, eating and walking.

While animal models are invaluable in helping us understand the mechanisms of complex diseases, translating findings from animal models such as rodents into human research can be very challenging. This is because rodent brains aren't structured and don't function in the same way as ours. Also, because rodents

“Sheep have excellent memories and advanced face recognition abilities as they can remember over fifty different sheep faces for two years, even after long periods of separation.”

have short lives and don't naturally develop AD, transgenic models, where animals are given a specific copy of a gene need to be used. This results in the model having one feature, but not the whole complex disease, which means developing treatments is very difficult.

Sheep can help us overcome these challenges as they have long lives, allowing researchers to investigate the mechanisms of ageing, and they have brains that are comparatively similar to our own. Most importantly, old sheep have been found to naturally develop the same brain pathology as those people with AD, which means their condition is more reflective of AD and transgenic animals aren't needed, allowing treatments to be investigated more robustly.

Because AD primarily affects cognitive function, it's vital to know if treatments will prevent the deterioration or enhance the retrieval of cognitive abilities. However, because research has been primarily conducted in rodents, there aren't any cognitive tasks for testing short-term and spatial memory in sheep.

We already know that sheep have excellent memories and advanced face recognition abilities as they can remember over fifty different sheep faces for two years, even after long periods of separation. While this may be expected as sheep live in flocks, impressively, sheep can also learn and remember complex images of human faces and can determine whether they are happy or angry.

Researchers at Aberystwyth University are developing cognitive tasks for sheep, using discriminative tasks with computer images, which are comparable with those tests used for humans, to test memory and other cognitive functions. This will allow AD research, including therapy development, to be translated more effectively into humans.



Thinking of increasing your slurry storage, and reducing spreading costs?



**Rural
Environmental
Services**

Contact us
Tel: 07368 391501
Email:
enquiries@kebek.co.uk

KeBeK Ltd, specialise in advice on regulatory compliance.

- Clean and Dirty water separation
- Slurry storage calculation
- Planning permission advice
- SUDS (Sustainable Urban Drainage scheme)
- Ammonia assessment

With over 60 years experience in the sector, we can make a real difference to your business. Working with members, we'll look for cost effective ways to reduce your environmental impact and achieve regulatory compliance.

Passionate about Wales - our environment, heritage and community. We're looking forward to working with members of the Farmers' Union of Wales.

Potentially funded through Farming Connect.

SPRING has sprung and summer is here. For many, the stock housing is empty as the livestock are out grazing, and the slurry store is nearly empty. Now is a good time to reflect on the winter worries of the rising tide of the slurry in the store or lagoon and start thinking about minimising the volume of slurry on the farm before looking at increasing slurry storage capacity.

We at Kebek Ltd have worked with many farmers to design slurry stores and have found that 90% of farmers have a rainwater problem and not a slurry storage problem.

Have a chat with us first if you are thinking about increasing the slurry storage capacity on your farm.

When considering increasing the slurry storage capacity on a farm, it is common to think that building the biggest slurry store possible is the best way to manage slurry and safeguard against causing pollution. However, building a larger slurry store is more expensive and results in greater volumes of slurry/dirty water needing to be stored and spread. Both adding significant cost.

Our suggestion is to first look at your existing slurry management system and the existing slurry storage capacity on your farm, and consider ways in which you can maximise the nutrient value of the manure produced, avoid contaminating clean rainwater with slurry where possible and ensure that the slurry storage capacity of the farm fits in with your farming needs.

How much slurry storage capacity do you need?

Over the past two years, there have been rumbles that the law associated with slurry storage capacity and the application of slurry to land was due to be changed for us in Wales. We are one step closer as the Welsh Government have recently issued the draft new regulations called the *Water Resources (Control of Agricultural Pollution) (Wales) Regulations 2020*. The advice from the Welsh Government is that these draft regulations will remain pending until the Coronavirus situation subsides.

We can advise on the existing current legislation of the Silage Slurry and Agricultural Fuel Oil Regulations - SSAFO regulations and these new draft regulations, thereby future proofing your farm business.

Aled Rees of
Trefere Fawr Farm,
Cardigan says:

“We wanted peace of mind, so we went for a two pronged approach; we wanted to know if we had enough slurry storage and we also needed help with the planning application and sizing of the effluent tank for our new silage clamp.”

MEAT MATTERS

Collective campaign launched to #Makelt Welsh Beef

by Gwyn Howells, HCC Chief Executive



DURING May, HCC joined with our counterparts QMS in Scotland and the AHDB in England to launch a joint £1.2million campaign to promote beef sales.

Coronavirus has caused significant issues within the supply chain and with the close of the hospitality and foodservice sector, sales of prime beef cuts, such as steaks

and roasting joints, have been unstable.

It is with this in mind that our joint campaign will be specifically targeting families and individuals to #Makelt steak night at home, to encourage sales of the higher value beef cuts.

We have pulled together an extensive campaign plan which is expected to reach up to 85% of Great British households across a 12 week campaign period.

We will be sponsoring key programme slots on Channel 5 with a TV advert promoting beef recipes. We have also had major adverts on some of the UK's most visited websites such as BBC Good Food and the Daily Mail. We have adverts running across radio stations and key on-demand television platforms as well as high profile national and regional newspapers.

In addition to the more traditional advertising methods, the campaign will also heavily feature

advertising on social media platforms, websites like Youtube and other digital platforms.

Across all of these channels, we will be using the strapline #Makelt - make it steak night, make it tonight and, ultimately, make it Welsh.

Importantly, throughout the campaign we are using recipes and images which have proven to be appealing to consumers - recipes which are healthy, colourful and quick and easy to prepare. Our own research has shown that consumers can be put off by recipes and dishes which look too complicated, so we have purposefully chosen recipes which will appeal to customers during these upcoming summer months.

I would warmly encourage FUW members to get involved with the campaign by sharing their own Welsh Beef dishes on social media with the #MakeltWelsh hashtag.

Between our campaign efforts, supermarket promotions and the impending BBQ season, we hope we will see an increase in sales and demand for Welsh Beef steaks and other prime cuts.

In the meantime, HCC is continuously monitoring and reacting to the Coronavirus situation as it evolves; you can find our latest news and developments and daily market prices all on the HCC website - [hybucig.cymru / meatpromotion.wales](http://hybucig.cymru/meatpromotion.wales)

Yn ystod mis Mai, ymunodd HCC gyda'i chymheiriaid QMS yn yr Alban a'r AHDB yn Lloegr i lansio ymgyrch ar y cyd gwerth £1.2 miliwn er mwyn hyrwyddo gwerthiant cig eidion.

Mae coronafirws wedi achosi problemau sylweddol o fewn y gadwyn gyflenwi, gyda hyn mewn golwg, bydd ymgyrch HCC ar y cyd yn targedu teuluoedd ac unigolion yn benodol i goginio stêc gartref #Makelt, er mwyn annog gwerthiant y toriadau cig eidion gorau.

PROPERTY MATTERS

Agricultural tenants warned over withholding rent

by Philip Meade of Davis Meade Property Consultants

TENANT farmers adversely affected by the coronavirus pandemic are advised that they must still pay their rent if they have been served with a two months' notice to pay despite adjustments made to possession legislation in the Coronavirus Act.

New Civil Procedure Rules (CPR) 55 amended by Practice Direction 51z to stay any possession proceedings by a landlord for at least 90 days will not remove the risk of not paying rent for an Agricultural Holding Act (AHA) tenancy after a notice to pay has been served. Practice Direction strongly advises landlords however, not to commence new proceedings.

Non-payment of rent for a Farm Business Tenancy (FBT) is usually dealt with by forfeiture which may be harder during the Covid crisis.

I was recently a panellist on an online seminar organised by The Royal Institution of Chartered Surveyors (RICS) considering the impact on agricultural tenancies and other issues from COVID-19.

We ascertained that agricultural rent levels have not noticeably been affected by Covid yet, as Brexit is still the main concern although Covid may feed in later in the year following the drop in some commodity prices such as potatoes and fall in demand for milk and beef.

The long term effects are yet to be seen but we are aware that some applications for arbitration have already been made following rent notices served Lady Day (March 25) and there is considerable uncertainty where these reviews may end up.

Covid 19 restriction will have an impact for accessing holdings. Normally landlords are permitted to access holding "at all reasonable times" under section 23 of Agricultural Holdings Act 1986 (AHA) and although access under FBTs will usually be contractual, reasonableness will nearly always be a criteria here as well.

Vulnerable tenants, either due to age or medical conditions, can reasonably expect landlords not to insist on access during Covid 19 lockdown especially onto farmyards or into the farmhouse.

Inspecting land, with usual prior notification, is unlikely to be such an issue as long as done sensibly, but travelling long distances to inspect holding may not be considered an essential journey by the authorities and should probably be avoided.

It is also clear that tenants may struggle to get tradesmen on site during the lockdown which could have implications for Notices to do repairs/notices to remedy etc.

In such instances the AHA does allow for an arbitrator to extend time for a notice to remedy where work is required such as repairs, but tenants will still need to apply for an arbitrator.

With regards to Alternative Dispute Resolution Covid had not yet affected appointments or Interlocutory matters (preparations for hearings etc) but this is starting to happen.

It is difficult to get witness statements, expert's reports and preliminary hearings arranged, although telephone hearings are possible. Hearings are unlikely to take place before social distancing is further relaxed although they will be possible in theory with proper precautions.

In the majority of ongoing cases I am involved with as an arbitrator, the parties have asked for an extension of time, so delays will be inevitable and in the current climate it would be unusual not to grant such a request, although every case is different.

Philip Meade can be contacted via the Oswestry office of Davis Meade Property Consultants telephone 01691 659658 email philipmeade@dmpcuk.com

Cynghorir ffermwyr tenant sy'n cael eu heffeithio gan y pandemig Coronafirws bod yn rhaid iddynt dalu eu rhent os cawsant rybudd o ddau fis i dalu er gwaethaf addasiadau a wnaed i ddeddfwriaeth mediant yn Neddf Coronafirws.

MERCHED MEWN AMAETH

Beth fydd yn newid?

gan Tegwen Morris, Cyfarwyddwraig Cenedlaethol, Merched y Wawr

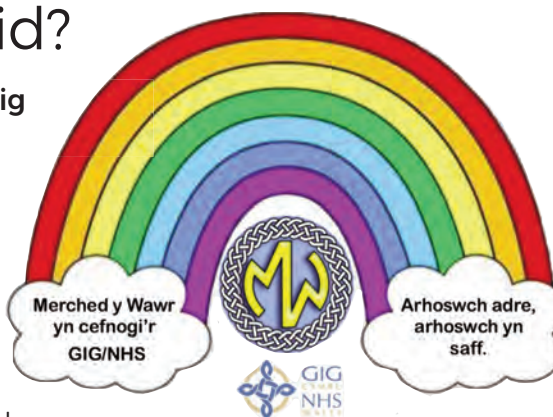
AR hyn o bryd does yna ddim atebion pendant, ond mae un peth yn sicr fe fydd amaethwyr yn dal i sicrhau fod yna fwyd i'w gael a byddwn ni fel merched yn dal i brynu'r bwydydd hynny gan gefnogi ein cynhyrchwyr lleol ar bob cyfle posibl.

Mi fydd yna nifer mwy yn coginio prydau blasus adref dybiwn i, ac os oes rhywbeth wedi profi'n boblogaidd mae ein tudalennau ar Facebook "Curo'r Corona'n Coginio", "Curo'r Corona'n Crefftio" a "Curo'r Corona'n y Cartref", felly, os ydych ar dechnoleg beth am gymryd golwg arnynt - cewch chi ddim eich siomi.

Eleni am y tro cyntaf fe gynhaliwyd ein Gŵyl Haf yn rhithiol - a braf oedd gweld cynifer yn cystadlu ac yn dilyn ein beirniadaethau. Ewch ar ein gwefan neu ein dilyn ar Facebook neu drydar. Ond yr un mor bwysig ydyw'r galwadau ffôn ar ein cynllun "Ffoniwch Ffrind" - does dim angen i neb fod yn unig - mae croeso bob amser i chi godi'r ffôn am sgwrs 01970 611661. Ac os oes yna rai creadigol yn eich plith beth am fynd ati i greu "Blodau Gobaith" - unrhyw flodyn ond yn un o liwiau'r enfys.

Beth am weldio, creu o bren, cortyn bel, gwau neu baentio? Ein gobaith ydyw casglu'r blodau ynghyd ar Fawrth 1af 2021 ac yna creu Enfys o Obaith yn yr Eisteddfod Genedlaethol - croeso cynnes i bawb fod yn rhan o'r prosiect yma.

Will anything change after the Covid 19 pandemic? At the moment there are no definitive answers, but one thing is for sure, farmers will continue to ensure that food is available and as women, we will continue to buy that food and support our local producers at every opportunity.



“Working together to make farming safer”

As part of our role within the Wales Farm Safety Partnership the FUW continues to work hard with affiliated organisations to combat the serious Health and Safety challenges on our farms.

Sadly, loss of life due to accidents on farm continue to be reported and, in order to improve the situation and to save lives on our farms, we will continue to provide expert advice and guidance in conjunction with the Health and Safety Executive.

Farm safety is above politics and all organisations here in Wales who are signed up to the ‘On Farm Health and Safety Charter for Wales’ are committed to: “Working together to make farming safer”. It is therefore sad that since the end of April we have received 7 fatality notifications from the Health and Safety Executive (HSE). 7 more families who are grieving the loss of a loved one, whose lives have been forever changed. The total this year so far: 16.

1.

Fatal alert (2020/10) - self-employed farmer was struck by a vehicle whilst working with livestock.

2.

Fatal alert (2020/11) - self-employed farmer was killed when working with cattle and newborn calves.

3.

Fatal alert (2020/12) - self-employed person killed when he was struck by part of an excavator.

4.

Fatal alert (2020/13) - farm worker killed when his ATV overturned while spraying vegetation.

5.

Fatal alert (2020/14) - self-employed farmer crushed between the back of a tractor and a mounted mower.

6.

Fatal alert (2020/15) - self-employed farmer killed when his quad bike overturned.

7.

Fatal alert (2020/16) - self-employed farmer killed by a bull. His son and daughter were also seriously injured.



Menter Moch Cymru

Developing the pig sector in Wales
Datblygu'r sector moch yng Nghymru

Mae Menter Moch Cymru yn gweithio gyda phob rhan o'r gadwyn gyflenwi i gefnogi a datblygu'r sector moch yng Nghymru.

- Sesiynau Hyfforddiant Am Ddim
- Grantiau ar gyfer Cynlluniau Iechyd y Genfaint
- Teithiau Astudio
- Cefnogaeth Marchnata a Hyrwyddo
- Cefnogaeth i Newydd Ddyfodiaid
- Taflenni Ffeithiau ac Adnoddau

Menter Moch Cymru works with all parts of the supply chain to support and develop the pig sector in Wales.

- Free Training Sessions
- Grants for Herd Health Plans
- Study Tours
- Marketing and Promotional Assistance
- New Entrant Support
- Factsheets and Resources

Life on the farm is busy, stressful at times and the current situation is probably not helping. The kids are still home, we're worried about people walking across our farm yards and spreading a potentially deadly virus and then there might be a TB test looming, or we need to make a dash on the quad bike to fetch livestock that have escaped. And most of the time we can handle the speed at which things have to be sorted.

Safety can often go to the back of the mind, but what we must remember is that handling cattle always involves a risk of injury from crushing, kicking, butting or goring.

The risk is increased if the work involves animals that have not been handled frequently, such as those from hills or moorland, sucklers or newly calved cattle. Certain jobs, such as veterinary work or TB testing, may increase the risk further.

Advice from the Health and Safety Executive stresses that “proper handling systems, trained and competent staff, and a rigorous culling policy can help make sure cattle handling can be carried out in relative safety”, whereas attempting to carry out stock tasks on unrestrained cattle or with makeshift equipment is particularly hazardous.

However, contrary to what has previously been claimed by officials who seem never to have been within 100 yards of a cow, it is never possible to fully eliminate the risk of handling cattle.

We must therefore never underestimate the risk, even with good precautions in

place - especially given that we are now carrying out more than 2 million cattle TB tests per year.

Familiarity with individual cattle can lead to complacency, especially when handling bulls, and a number of accidents, some fatal, happen every year because we fail to treat bulls with respect. Let's not forget that a playful bull can kill you just as easily as an angry one.

Sadly, deaths caused by animals is ranked second in the list of reasons why people suffer fatal injuries on farms, with those killed often being experienced stockmen with decades of experience. Sadly, sometimes it appears the worst possible outcome might have been avoided by a farmer making sure they were accompanied by another when handling stock.

Whichever way you look at it, we have serious Health and Safety challenges on our farms: Over the last twenty years, other industries such as construction and quarrying have greatly improved their safety records, while farming has not, and it is frightening that you are now six times more likely to be killed on a farm than you would on a building site.

So whilst the rest of the world is in crisis for a myriad of reasons, please do your utmost to ensure that there isn't one on your farm. Especially if it can be avoided. For more information and advice on how to stay safe on farm, please visit the Health and Safety Executive website: www.hse.gov.uk/agriculture/



mentermochcymru@menterabusnes.co.uk
www.mentermochcymru.co.uk
Facebook & Twitter: @MenterMochCymru

An undemanding 'get-you-from-A-to-B' car

by Huw Thomas, Vice Chairman, Welsh Motoring Writers

KIA has been Hyundai's "other half" since 1998 when the latter acquired a majority stake during that decade's Asian economic crisis. The Sportage line dates back to 1993 but the model which made it a real contender in the broad and highly competitive compact SUV/Crossover market was the third edition of 2010.

In a sector which tended towards a cautious sameness, the new Sportage (*pictured right*), was a stand-out car of style and 'presence'. Evolving the previous model's design theme, current (4th generation) car came in 2015 and revisions for the 2019 model year saw new engines and transmissions with a Mild Hybrid set-up for Diesel variants. Further adjustments to the range and equipment levels were made in May this year.

Kia's best-selling car globally in 2016, the Sportage remains "No.1" for the company in the UK and, EU-wide, yielding top spot only recently (and closely) to the new Ceed family hatchback range. European Sportage models are produced at Zilina, Slovakia.

Kia's EU+EFTA annual sales topped half a million for the first time last year giving it a 3.2 per cent market share overall. Hyundai-Kia's combined share (EU+EFTA) was 6.7 per cent with sales of just over 1m units securing 4th place among the region's top 15 players.

Sportage petrol engines: 1.6 GDi 130bhp or 1.6 T-GDi 174bhp. Diesel: 1.6 CRDi 134bhp.

Transmissions: 6-speed manual or 7-speed dual-clutch auto.

Mild Hybrid incorporates a lithium-ion 48V battery and enhanced stop-start. No electric-only

running but it lightens the load on the engine during acceleration and/or hill ascent with energy recuperation on descent, in the cruise and when braking - performance and economy improved but emissions lowered.

The 4x4 system ("All Wheel Drive") is the familiar set-up of front-wheel-drive under normal conditions with auto-activation of the rear axle should the need arise. It is available on 5 of the 17-model range. Up to 40 per cent of the drive can go to the rear axle and, up to 19mph, drive can be locked 50-50 to the two axles to optimise traction.

It will cancel out at 25mph but re-activate if speed slows to 19mph again. Stop-start can be switched off at any time but, when off-road, progress is helped further by hill-start and hill-descent assist. The 'electronics' include trailer sway mitigation.

The extra battery (underfloor) has had little effect on load-space and the cabin generally remains roomy and comfortable. The vehicle rides well for its type - a 'high-rise' body demands stiffer suspension. Steering/road-holding too are clearly up to the job if not class-leading. A relaxed, undemanding 'get-you-from-A-to-B' car.

There's been the usual equipment up-grade (to complement an external 'refresh') with a further step-up in cabin quality. The cars are well-specified, mid-range models especially, but having to go via the main screen menu to 'dial up' a call rather than press a button is not a step forward. Otherwise the whole layout is well-planned and 'user-friendly'. This very easy-to-live-with nature explains much of the Kia's appeal.



Model Line-Up: '2'; '3'; 'GT-Line'; 'GT-Line S'; £23,445 - £34,325. Auto-only 4x4s start at £25,555 ('2' petrol 174bhp) and Diesels at £30,575 ('GT-Line').

Facts & Figures: GT-Line 1.6 CRDi 4x4; 112mph; 60 - 11.6secs; 46.3mpg (official comb); CO2 159g/km; Road Tax £150 (1st yr £540 incl in purchase price); Ins Grp 21; Braked Trailer Max 1,600kg (Petrol 174bhp - 1,900kg). Warranty - 7 years or 100,000 miles.

Verdict: Well-equipped. Sat Nav with full connectivity now standard for all grades. Mid-range models the more price-competitive, most expensive ones a little less so.

Any item any price free online



People are more likely to see your advert with a **photo**

marketplacelive.co.uk
Your local place to buy and sell

WWW.JDS MACHINERY .CO.UK VALTRA TAKEUCHI



Valtra T174 Active, 652 hours approx. 4 spools, Hydraulic Top link, Front P.T.O. and links. Quick loader. 68 Plate

Valtra T234 Active, 915 hours approx. 4 Spools, Front PTO and linkage. 2018

Valtra N154 with loader, 224 hours, new tyres, mint condition



JCB Fastrac 4220. 2720 hours, 62993km approx. Front linkage, PTO, Vario box, 4 wheel steering.

Kubota M7151, 66 Plate, 4873 hours

Kubota M7151 Premium. 1600 Hours Approx. Front Linkage PTO. 2017



Takeuchi TB290, Includes Hydraulic Quick Hitch & 3 buckets, 336 Hours

JCB JS220, 8027 hours approx

Plant Trailer 3.5 ton

Takeuchi TB260, 3571 hours approx. complete with hydraulic hitch

FARMA

FÖRST

Fuel Proof

PERMASTORE TANKS & SILOS

Phone: 01559 384886 Fax: 01559 384814 Email: sales@jdsmechanry.co.uk

**Byw'n lleol
Gweithio'n lleol
Yswirio'n lleol**

**Live locally
Work locally
Insure locally**

Ffoniwch ni ar 0344 800 3110

am bris sydd wedi'i deilwra i'ch anghenion chi

Call us on 0344 800 3110

for a quote that is tailored to your needs



GWASANAETHAU YSWIRIANT

FUW

INSURANCE SERVICES

Gwasanaethau Yswiriant FUW yw teitl masnachol FUW Insurance Services Limited. Swyddfa gofrestredig: Llys Amaeth, Plas Gogerddan, ABERYSTWYTH SY23 3BT. Cofrestrwyd yn Lloegr a Chymru o dan rhif 07981993. Mae FUW Insurance Services Limited yn cael ei awdurdodi a'i reoli gan y 'Financial Conduct Authority' o dan Rif Cofrestru 615251.

FUW Insurance Services is a trading title of FUW Insurance Services Limited. Registered office: Llys Amaeth, Plas Gogerddan, ABERYSTWYTH SY23 3BT. Registered in England & Wales Number 07981993. FUW Insurance Services Limited is authorised and regulated by the Financial Conduct Authority in respect of insurance mediation, under Registration Number 615251.
