

# Digital Connectivity

The range of services and opportunities which are exclusively available through the internet has grown significantly over the past decade, and access to broadband is now regarded as a necessity by the majority of UK businesses and households.

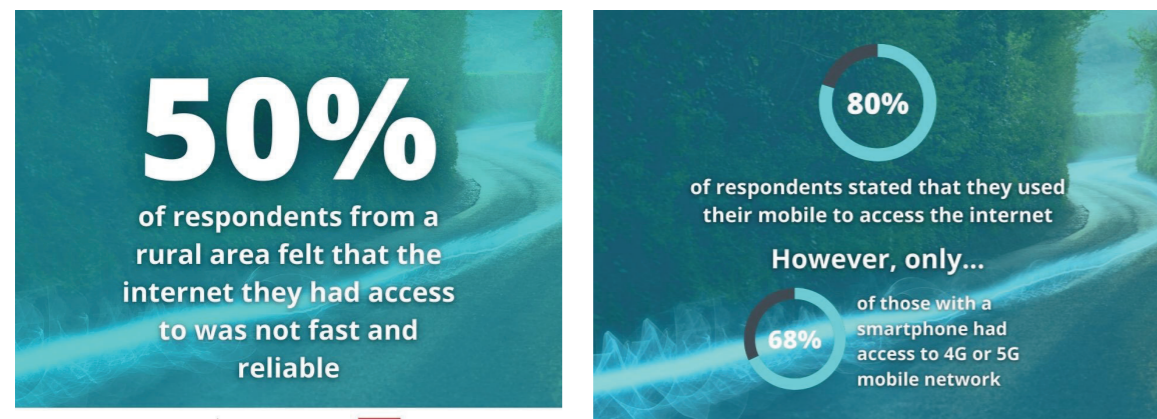
This has become particularly visible during the Covid-19 pandemic as many have relied upon access to broadband for keeping in contact with friends and family and to work virtually from home.

The FUW has campaigned relentlessly over recent years for the reliability and speed of rural broadband to be improved given that farmers of all ages are now required to use computer technology for their online business transactions.

Nevertheless, many farmers are still unable to complete online SAF, BCMS or EIDCymru submissions due to poor broadband therefore the importance of investing into such infrastructure must be recognised before introducing an online multispecies traceability system, Cattle EID or online resources as part of a future agricultural support scheme.

With access to reliable broadband still evidently below the national average in many of our rural areas, and farm businesses representing a large proportion of those with no broadband access, it is essential that the limitations of online services and communications are recognised and that rural access to broadband is increased.

## RWAS Winter Fair 2021 Digital Connectivity Survey results:



## Key FUW asks on UK Governments and Welsh Local Authorities



# Cysylltedd Digidol



Mae'r ystod o wasanaethau a chyfleoedd sydd ar gael yn gyfan gwbl drwy'r rhyngwrwyd wedi cynyddu'n sylweddol dros y degawd diwethaf, ac mae mynediad i fand eang bellach yn cael ei ystyried yn anghenraid gan y mwyafrif o fusnesau a chartrefi'r DU.

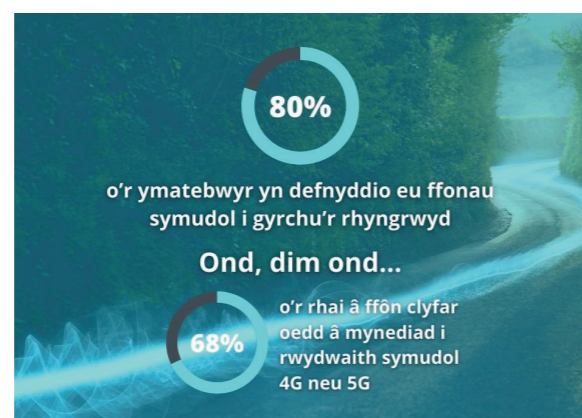
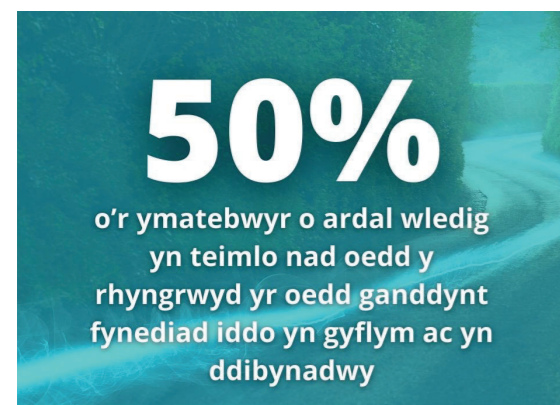
Daeth hyn yn arbennig o amlwg yn ystod pandemig Covid-19 gan fod nifer wedi dibynnu ar fynediad i fand eang i gadw mewn cysylltiad â ffrindiau a theulu ac i weithio'n rhithwir o gartref.

Mae UAC wedi ymgyrchu'n ddifflino dros y blynyddoedd diwethaf i wella dibynadwyedd a chyflymder band eang gwledig o ystyried ei bod yn ofynnol bellach i ffermwyr o bob oed ddefnyddio technoleg gyfrifiadurol ar gyfer eu trafodion busnes ar-lein.

Serch hynny, parhau mae nifer y ffermwyr sy'n methu â chwblhau cyflwyniadau SAF, BCMS ac EIDCymru ar-lein oherwydd band eang gwael. Rhaid felly cydnabod pwysigrwydd buddsoddi mewn seilwaith o'r fath cyn cyflwyno system olrhain amlrywogaeth ar-lein, EID Gwartheg neu adnoddau ar-lein fel rhan o gynllun cymorth amaethyddol yn y dyfodol.

Gyda mynediad at fand eang dibynadwy yn parhau i fod yn amlwg yn is na'r cyfartaledd cenedlaethol mewn nifer o'n hardaloedd gwledig, a busnesau fferm yn cynrychioli cyfran fawr o'r rhai heb fynediad band eang, hanfodol ydyw i gydnabod cyfyngiadau gwasanaethau a chyfathrebu ar-lein a bod mynediad gwledig i fand eang yn cynyddu.

## Canlyniadau Arolwg Cysylltedd Digidol Ffair Aeaf CAFC 2021:



## Gofynion allweddol UAC ar Lywodraethau'r DU ac Awdurdodau Lleol Cymru

